

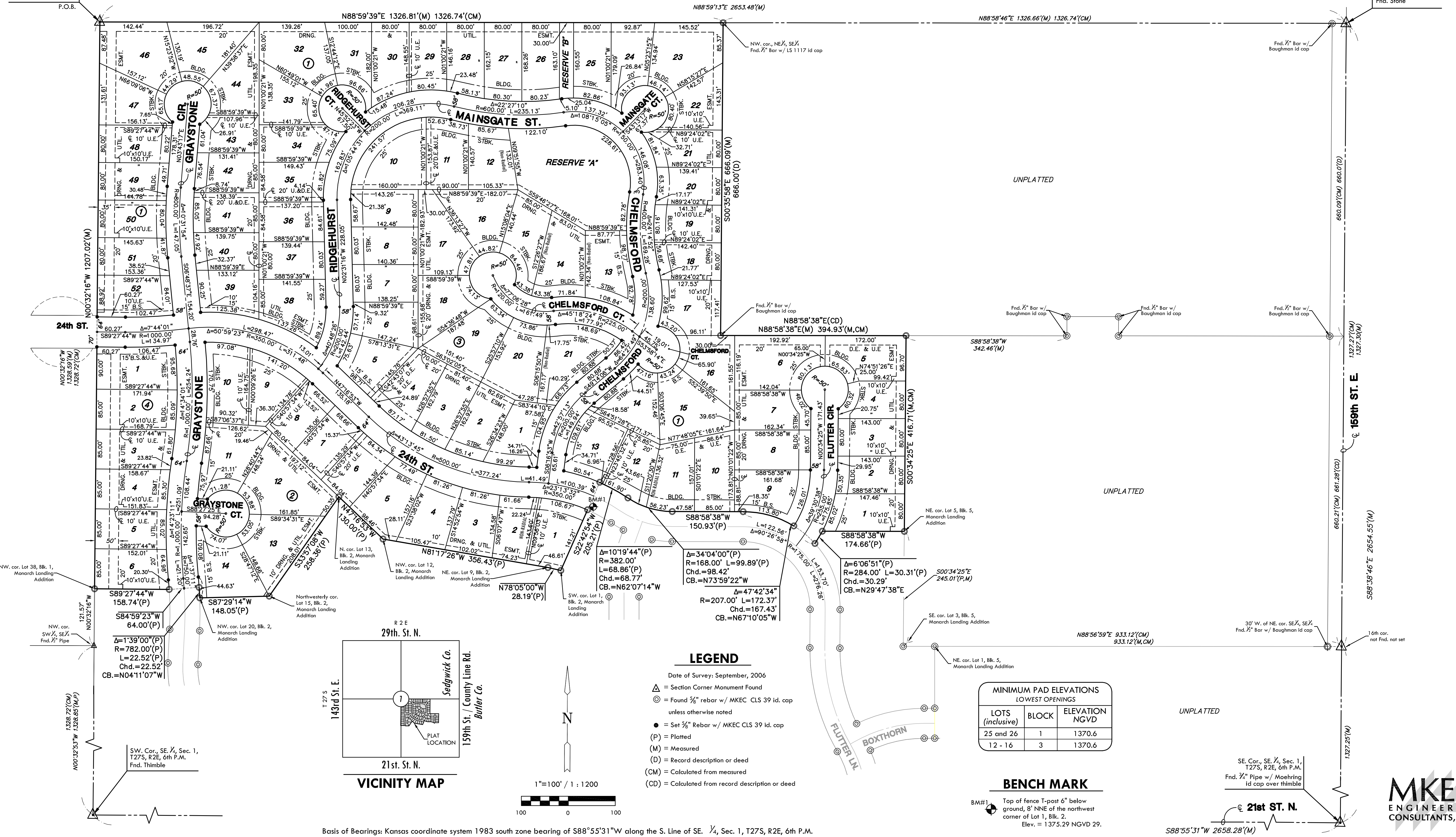
FINAL PLAT

MONARCH LANDING SECOND ADDITION

AN ADDITION TO WICHITA, SEDGWICK COUNTY, KANSAS

NW. cor., SE 1/4, Sec. 1,
T27S, R2E, 6th P.M.
Fnd. 1/2" pipe
P.O.B.

NE. Cor., SE 1/4, Sec. 1,
T27S, R2E, 6th P.M.
Fnd. Stone



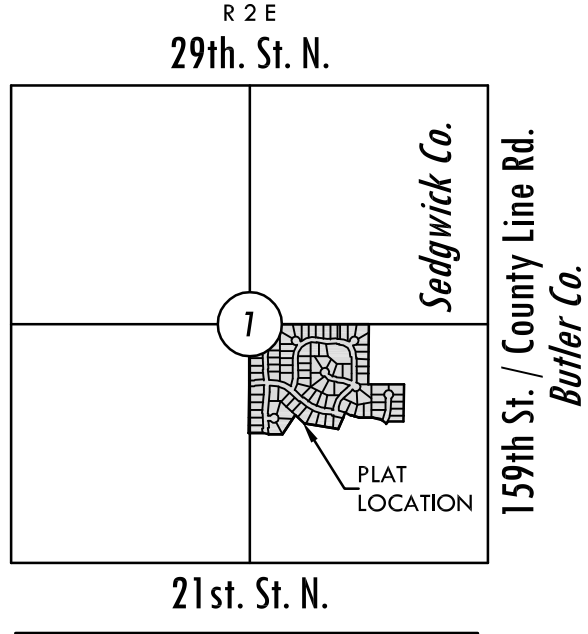
NW. cor. Lot 38, Blk. 1,
Monarch Landing
Addition

NW. cor.
SW 1/4, SE 1/4,
Fnd. 1/2" Pipe

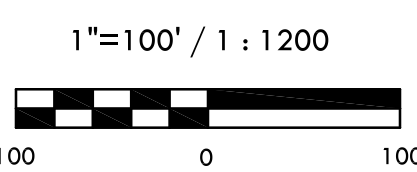
SW. Cor., SE 1/4, Sec. 1,
T27S, R2E, 6th P.M.
Fnd. Thimble

Northwesterly cor.
Lot 15, Blk. 2,
Monarch Landing
Addition

NW. cor. Lot 20, Blk. 2,
Monarch Landing
Addition



VICINITY MAP



Basis of Bearings: Kansas coordinate system 1983 south zone bearing of S88°55'31"W along the S. Line of SE 1/4, Sec. 1, T27S, R2E, 6th P.M.

LEGEND

- Date of Survey: September, 2006
- △ = Section Corner Monument Found
- ⊙ = Found 3/8" rebar w/ MKEC CLS 39 id. cap unless otherwise noted
- = Set 3/8" Rebar w/ MKEC CLS 39 id. cap
- (P) = Platted
- (M) = Measured
- (D) = Record description or deed
- (CM) = Calculated from measured
- (CD) = Calculated from record description or deed

MINIMUM PAD ELEVATIONS LOWEST OPENINGS		
LOTS (inclusive)	BLOCK	ELEVATION NGVD
25 and 26	1	1370.6
12 - 16	3	1370.6

BENCH MARK

BM#1
Top of fence T-post 6" below
ground, 8' NNE of the northwest
corner of Lot 1, Blk. 2.
Elev. = 1375.29 NGVD 29.

SE. Cor., SE 1/4, Sec. 1,
T27S, R2E, 6th P.M.
Fnd. 3/4" Pipe w/ Moehring
id cap over thimble

MKEC
ENGINEERING
CONSULTANTS, INC.

411 N. WEBB ROAD
WICHITA, KS. 67206
316-684-9600