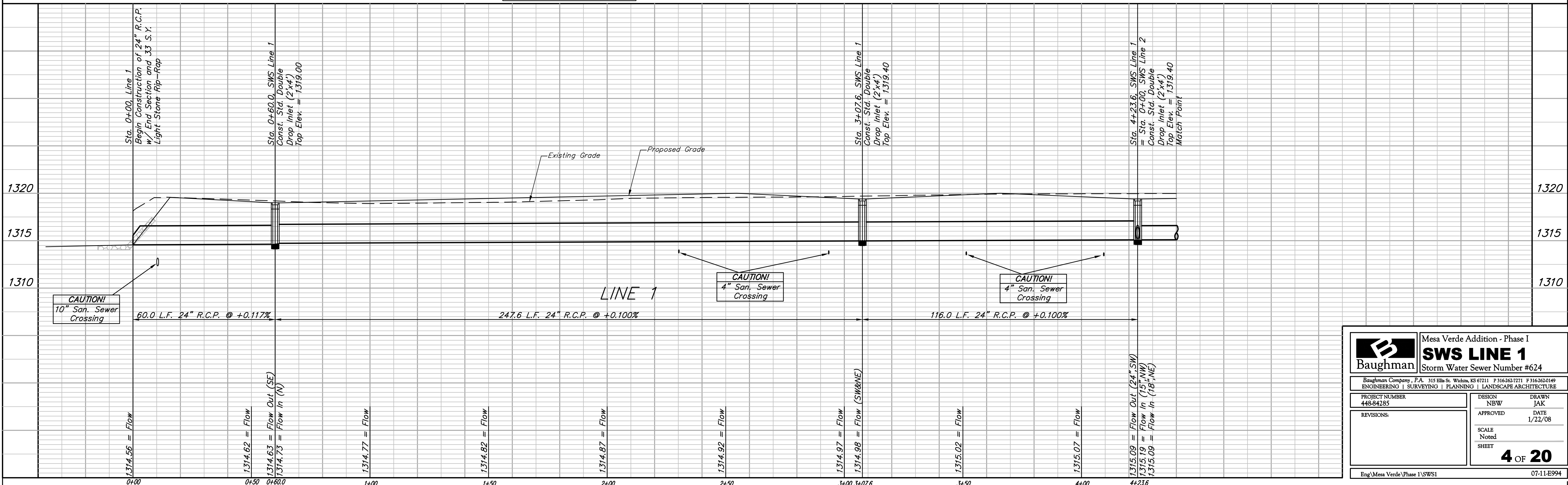
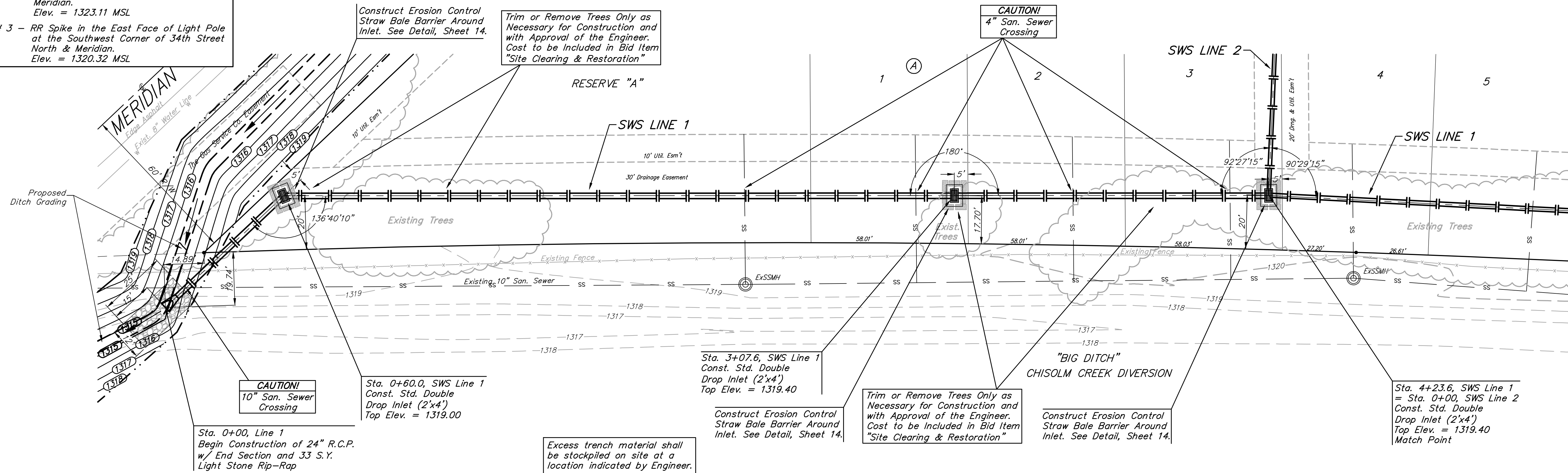


BENCHMARK:
 BM # 1 - City of Wichita Disc in the Northwest Corner of 37th Street North and Womer Elev. = 1324.06 MSL
 BM # 2 - "C" Cut on the Top of Curb in the NE Corner of the Parking Lot for The Word of Life Church at 37th Street North & Meridian. Elev. = 1323.11 MSL
 BM # 3 - RR Spike in the East Face of Light Pole at the Southwest Corner of 34th Street North & Meridian. Elev. = 1320.32 MSL

MESA VERDE ADDITION

SCALE:
 1" = 20' HORIZONTAL
 1" = 5' VERTICAL
 • = IRON



| | | | |
|--|---------------|--|---------------------------|
| | | Mesa Verde Addition - Phase I SWS LINE 1 Storm Water Sewer Number #624 | |
| <small>Baughman Company, P.A. 315 Ellis St. Wichita, KS 67211 P 316-262-7271 F 316-262-0149 ENGINEERING SURVEYING PLANNING LANDSCAPE ARCHITECTURE</small> | | | |
| PROJECT NUMBER 448-84285 | DESIGN NBW | DRAWN JAK | |
| REVISIONS: | APPROVED | DATE 1/22/08 | |
| SCALE Noted | | | |
| SHEET | | 4 OF 20 | |
| <small>Eng\Mesa Verde\Phase I\SWS1</small> | | | <small>07-11-E994</small> |