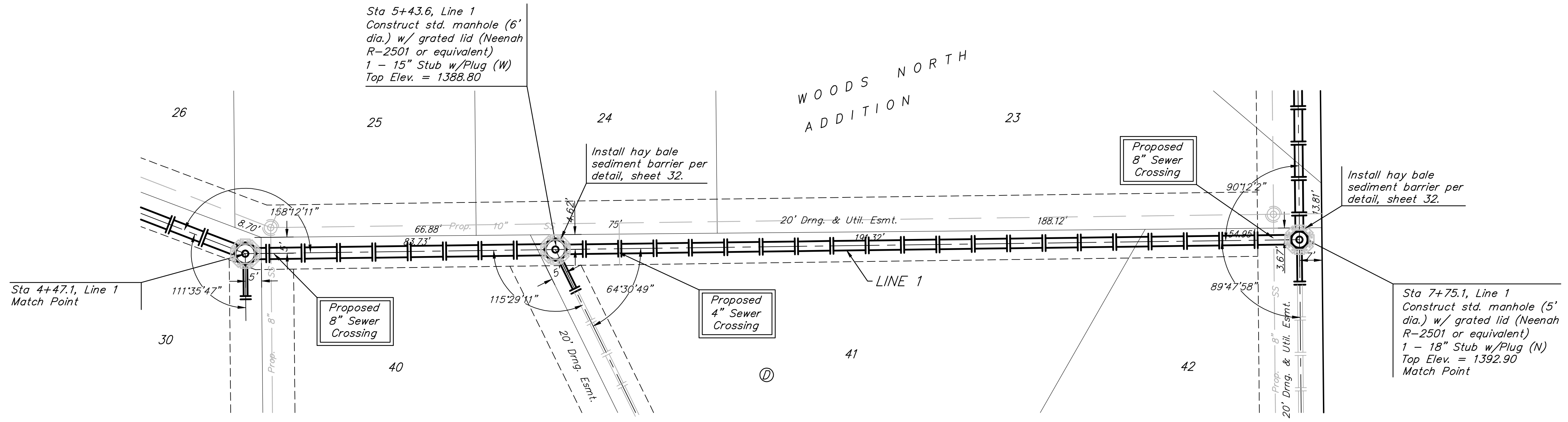
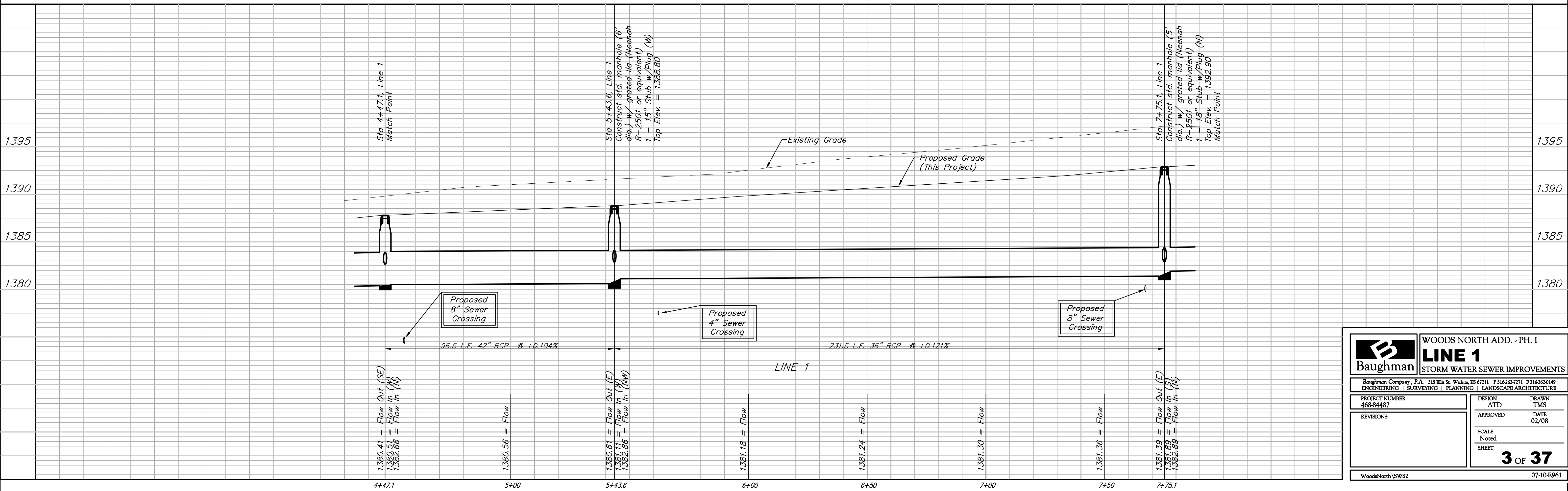


BENCHMARK:
 CROSS CUT ON NORTH
 END OF WEST HEADWALL
 137.5' SOUTH & 12' WEST
 OF THE INTERSECTION OF
 29TH ST N & 127TH ST E.
 ELEV. = 1382.45 NAVD88



Scale: 1" = 20' Horizontal
 1" = 5' Vertical
 • = Iron



| | | | |
|--|-------------------------|--------------------------|----------------|
| Baughman | | WOODS NORTH ADD. - PH. I | |
| | | LINE 1 | |
| STORM WATER SEWER IMPROVEMENTS | | | |
| Baughman Company, P.A. 315 Ellis St. Wichita, KS 67211 P 316-262-7271 F 316-262-0149 | | | |
| ENGINEERING SURVEYING PLANNING LANDSCAPE ARCHITECTURE | | | |
| PROJECT NUMBER 468-84487 | DESIGN ATD | DRAWN TMS | DATE 02/08 |
| REVISIONS: | SCALE Noted SHEET | | |
| | | | 3 OF 37 |
| WoodsNorth/SWS2 | | | 07-10-E961 |