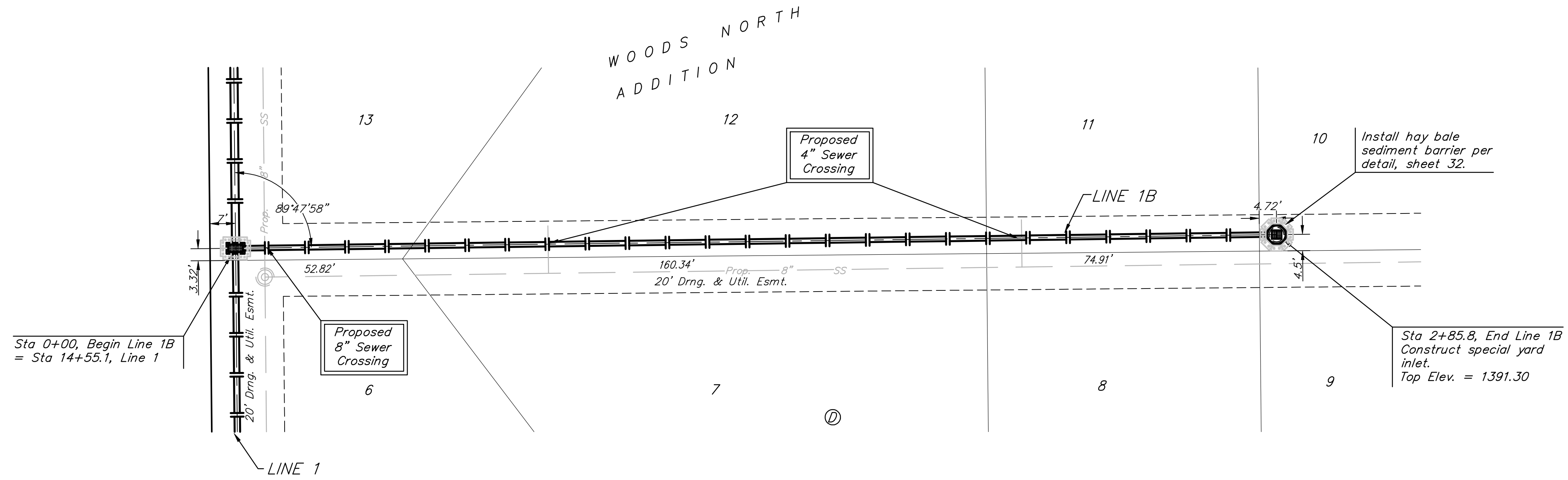
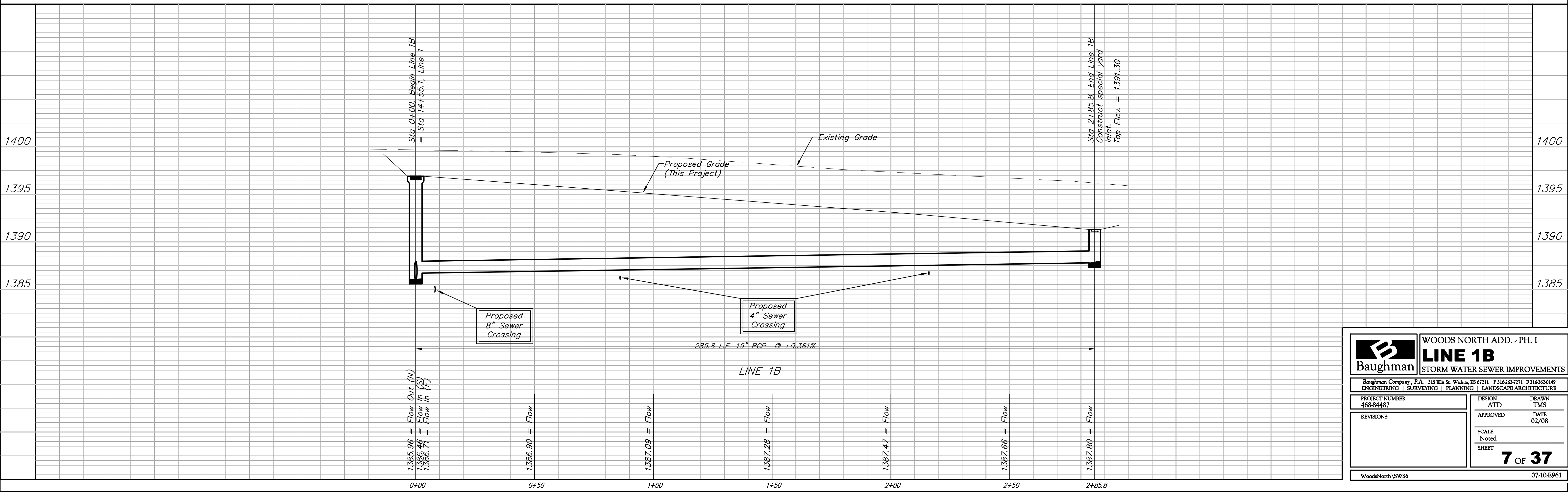


BENCHMARK:  
 CROSS CUT ON NORTH  
 END OF WEST HEADWALL  
 137.5' SOUTH & 12' WEST  
 OF THE INTERSECTION OF  
 29TH ST N & 127TH ST E.  
 ELEV. = 1382.45 NAVD88



Scale: 1" = 20' Horizontal  
 1" = 5' Vertical  
 • = Iron



	WOODS NORTH ADD. - PH. I	
	<b>LINE 1B</b>	
STORM WATER SEWER IMPROVEMENTS		
Baughman Company, P.A. 315 Ellis St. Wichita, KS 67211 P 316-262-7271 F 316-262-0149		
ENGINEERING   SURVEYING   PLANNING   LANDSCAPE ARCHITECTURE		
PROJECT NUMBER 468-84487	DESIGN ATD	DRAWN TMS
REVISIONS:	APPROVED	DATE 02/08
	SCALE Noted	
	SHEET	<b>7 OF 37</b>
WoodsNorth\SW56		07-10-E961