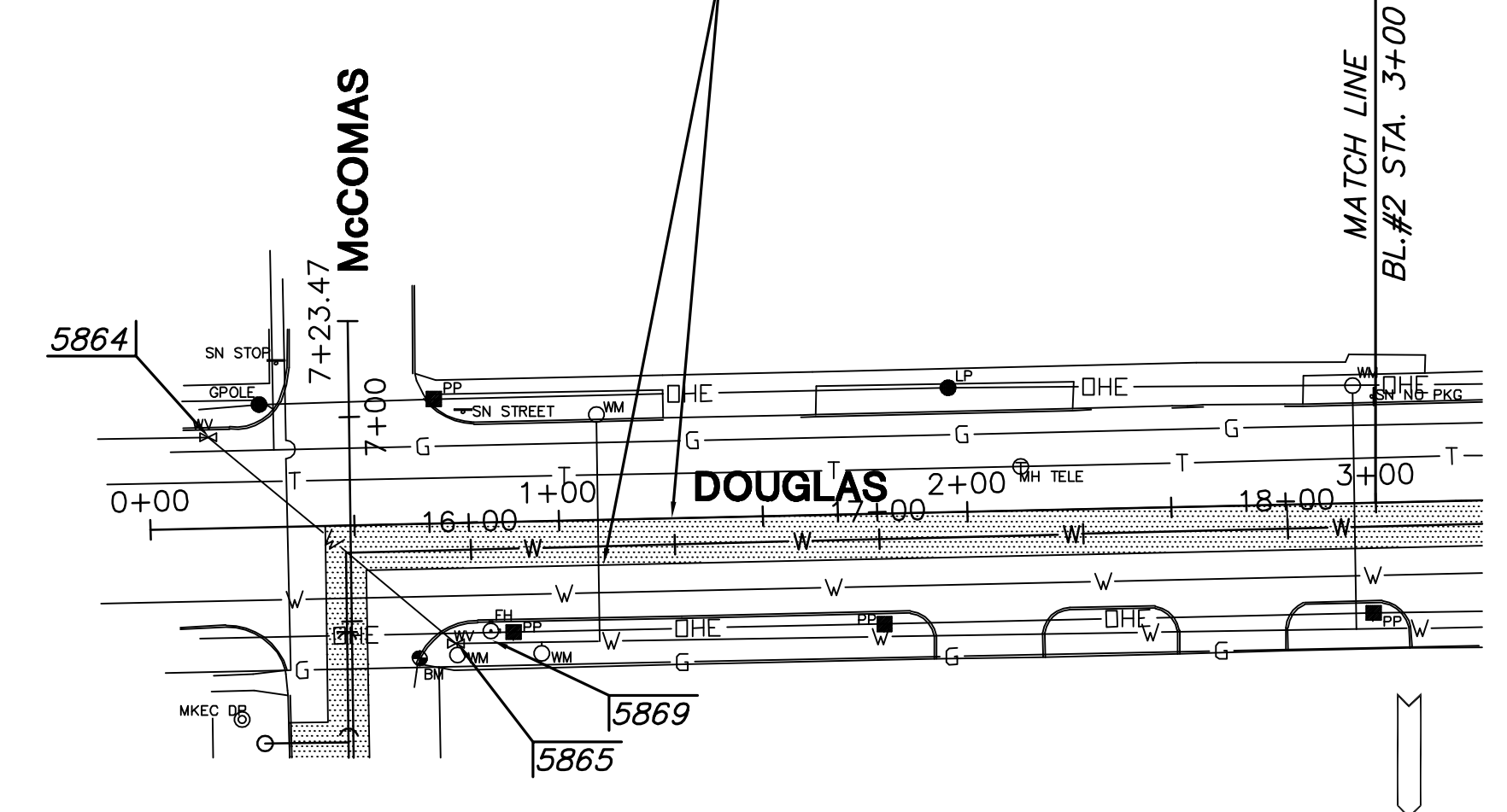
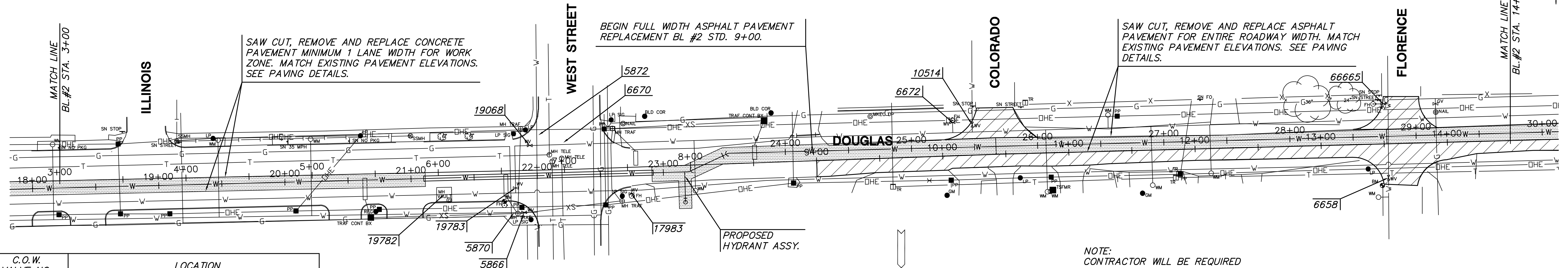
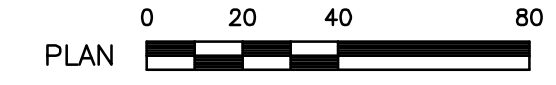


McCOMAS ST. PAVEMENT REPLACEMENT PLAN



**DOUGLAS AVE. PAVEMENT REPLACEMENT PLAN
BL#2 STA. 0+47.69 TO 3+00**



**DOUGLAS AVE. PAVEMENT REPLACEMENT PLAN
BL#2 STA. 3+00 TO 14+50**



NOTE:
CONTRACTOR WILL BE REQUIRED
TO MATCH EXISTING GRADE
THROUGHOUT PAVING AREA AND
TO PROVIDE A FLOW LINE THAT
CONTINUOUSLY DRAINS TO EXISTING
FLOWS.

UNK = UNKNOWN

**PAVEMENT REPLACEMENT
LEGEND**

- = PAVEMENT REMOVAL AND REPLACEMENT FOR WATER LINE PART OF PROJECT
- = PAVEMENT REMOVAL AND REPLACEMENT FOR STREET MAINTENANCE PART OF PROJECT

C.O.W. VALVE NO.	LOCATION
UNK-1 6" HYDT	WL STA: 9+55.72 OFFSET: 8.39 L BL#2 STA: 0+53.09 OFFSET: 9.08 L N 1685486.04, E 1634564.29
UNK-2 " AIR RELEASE	WL STA: 9+56.89 OFFSET: 16.34 L BL#2 STA: 0+54.28 OFFSET: 16.96 L N 1685484.99, E 1634572.25
UNK-3 6" TAPPING VALVE	WL STA: 9+89.66 OFFSET: 18.70 R BL#2 STA: 0+87.05 OFFSET: 17.99 R N 1685451.69, E 1634537.71
UNK-4 6" GV	WL STA: 9+89.10 OFFSET: 3.37 R BL#2 STA: 0+86.47 OFFSET: 2.65 R N 1685452.49, E 1634553.03
UNK-5 36" BFV	WL STA: 9+76.47 OFFSET: 4.55 L BL#1 STA: 0+73.84 OFFSET: 5.26 L N 1685452.49, E 1634553.03
PROPOSED 2" ARV	WL STA: 15+23 OFFSET: 20.52 L BL#1 6+20.35 OFFSET: 21.74 L N 1684919.01, E 1634584.98
5865 8" GV	WL STA: 15+95.77 OFFSET: 22.81 R BL#2 STA: 0+14.67 OFFSET: 22.32 L N 1684844.02, E 1634598.81
5864 8" GV	WL STA: 15+95.77 OFFSET: 22.81 R BL#2 STA: 0+74.18 OFFSET: 29.44 R N 1684894.46, E 1634538.18
5869 6" GV	NOT SURVEYED SHOWN ON VALVE REPORT & CITY WATER MODEL (FH VALVE)
19782 36" BFV	36" VALVE LOCATED IN VALVE VAULT VALVE NOT SURVEYED

C.O.W. VALVE NO.	LOCATION
19783 12" BFV	WL STA: 21+82.69 OFFSET: 9.27 R BL#2 STA: 6+61.04 OFFSET: 13.64 R N 1684865.76, E 1633951.80
19068 12" BFV	WL STA: 21+94.69 OFFSET: 24.08 L BL#2 STA: 6+72.92 OFFSET: 19.75 L N 1684832.12, E 1633940.66
5870 6" HYDT	NOT SURVEYED, CITY VALVE RECORD SAYS 6 1/2' N OF HYDT. AT DOUGLAS & WEST ST. 8' WEST OF HYDT, 1 FT S. OF HYDT.
5866 8" GV	WL STA: 21+88.93 OFFSET: 28.79 R BL#2 STA: 6+67.36 OFFSET: 33.14 R N 1684885.12, E 1633945.06
17983 6" GV	WL STA: 22+74.27 OFFSET: 16.34 R BL#2 STA: 7+52.36 OFFSET: 21.04 R N 1684870.47, E 1633860.07
PROPOSED HYDT	WL STA: 23+17 OFFSET: 4.08 R BL#2 STA: 7+95.31 OFFSET: 9.21 R N 1684857.11, E 1633817.67

C.O.W. VALVE NO.	LOCATION
5872 12" GV	NOT SURVEYED
6670 8" TAPPING VALVE	NOT SURVEYED, CITY VALVE RECORD SAYS 40' S. & 12 FT W. OF HYDRANT ON NE CORNER OF WEST AND DOUGLAS.
6672 6" GV	WL STA: 25+33.06 OFFSET: 19.88 L BL#2 STA: 10+08.75 OFFSET: 26.39 L N 1684813.85, E 1633605.55
10514 6" GV	WL STA: 25+48.55 OFFSET: 17.82 L BL#2 STA: 10+24.22 OFFSET: 24.16 L N 1684815.51, E 1633590.01
6658 8" GV	WL STA: 28+77.27 OFFSET: 32.90 R BL#2 STA: 13+52.71 OFFSET: 26.92 R N 1684857.70, E 1633260.06
66665 6" GV	WL STA: 28+74.59 OFFSET: 25.81 L BL#2 STA: 13+50 OFFSET: 31.78 L N 1684799.10, E 1633264.32

REVISED: 2-11-08

MKEC
ENGINEERING
CONSULTANTS, INC.

411 N. WEBB ROAD
WICHITA, KS. 67206
316 - 684 - 9600

**36" WATER MAIN IN DOUGLAS FROM
McCOMAS TO FLORA**

PROJECT NAME
PAVING REPLACEMENT PLAN I
SHEET TITLE

BDM DESIGN BY: BDM DRAWN BY: SCU CHECKED BY:

JULY 2006 DATE 05703_E01 DRAWING NAME 18 OF 23 SHEET / OF