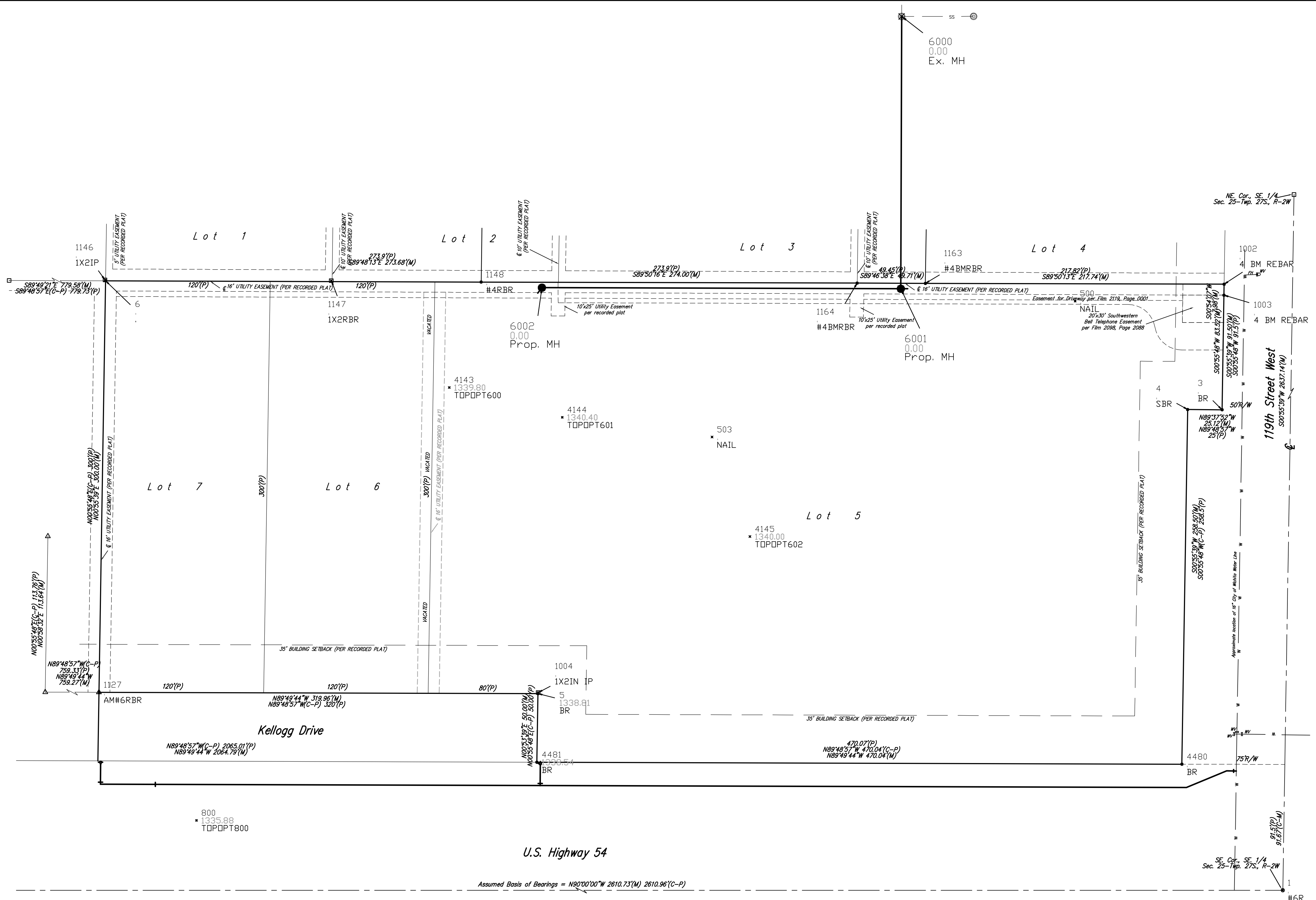



Scale: 1" = 40'

* = #4 Baughman Rebar Found
 ○ = #6 Rebar Found
 □ = 1/2" Iron Pipe Found
 △ = #6 Armstrong Rebar Found
 (C) = Calculated
 (M) = Measured
 (P) = Plotted

Pt. #	North	East	Elev.	Desc.
1	5000.0000	5000.0000	-99999	#6R
3	5350.1900	4955.7800	-99999	BR
4	5350.3500	4930.6600	-99999	SBR
5	5143.2900	4457.2500	1338.8100	BR
6	5444.2000	4142.1400	-99999	
500	5429.3467	4848.7213	-99999	NAIL
503	5330.2906	4584.0774	-99999	NAIL
800	5050.8828	4208.3789	1335.8797	TOPOPT800
1002	5441.6773	4957.2660	-99999	4 BM REBAR
1003	5433.6955	4957.1404	-99999	4 BM REBAR
1004	5144.0869	4457.4124	-99999	1X2IN IP
1127	5144.2421	4137.2850	-99999	AM#6RBR
1146	5444.7617	4141.6872	-99999	1X2IP
1147	5444.2285	4306.6032	-99999	1X2RBR
1148	5443.2661	4415.8237	-99999	#4RBR
1163	5442.2975	4739.5277	-99999	#4BMRBR
1164	5442.4906	4689.8201	-99999	#4BMRBR
4143	5366.3929	4392.5857	1339.7995	TOPOPT600
4144	5344.6750	4474.9243	1340.4032	TOPOPT601
4145	5257.7634	4611.6884	1339.9950	TOPOPT602
4480	5091.8800	4926.4900	-99999	BR
4481	5093.2900	4456.4400	1338.5400	BR
6000	5636.8114	4222.2227	0.0000	Ex. MH
6001	5438.3671	4721.6461	0.0000	Prop. MH
6002	5439.1504	4460.1051	0.0000	Prop. MH



Assumed Basis of Bearings = N90°00'00"W 2610.73(M) 2610.96(C-P)



Baughman

Wheatridge Addition
Coordinate
Sheet
Sanitary Sewer Improvements

PROJECT NUMBER
468-84491

DESIGN
MWS

DRAWN
MWS

REVISIONS:

APPROVED
DATE
01/08

SCALE
Noted

SHEET
10 OF 11

E:\eng\Wheatridge Addition\staging plan.dwg

08-01-E022