

AT&T, Wichita Central Unit  
154 N. Broadway Ave. Rm 210  
Wichita, Ks. 67202  
Jason Edwards (316) 268-2008

Kansas Department of Transportation  
3200 E. 45th North  
Wichita, Ks. 67220  
Hank Koerner (316) 744-1271

Aquila Network  
1611 S. Hoover Rs.  
Wichita, Ks. 67209  
Calvin Briggs (316) 941-1608

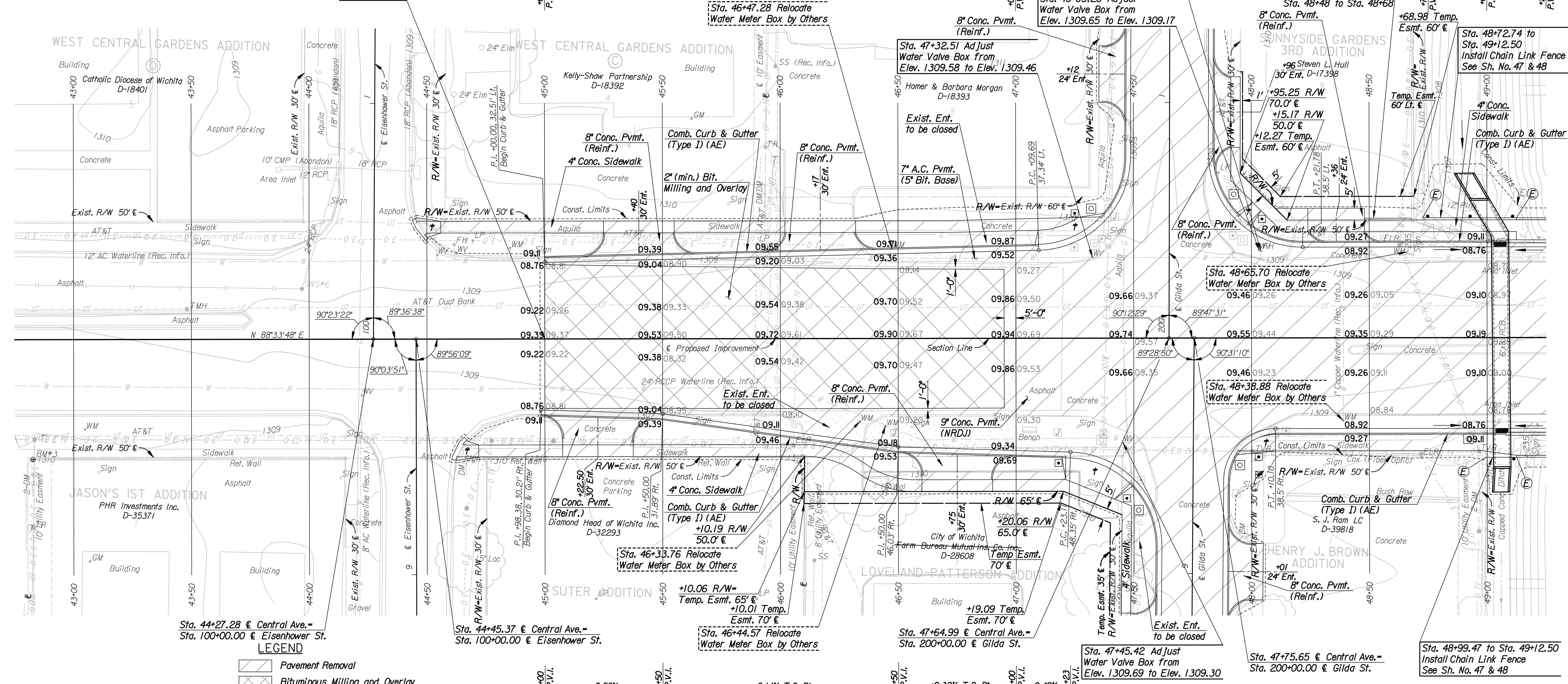
Westar Energy  
1900 E. Central Ave.  
Wichita, Ks. 67214  
Hank Velghe (316) 261-6828

Cox Communications  
701 E. Douglas Ave.  
Wichita, Ks. 67202  
Eva Moore (316) 260-7204

Wichita Water and Sewer Department  
8th Floor - City Hall  
455 N. Main St.  
Wichita, Ks. 67202  
Bill Perkins (316) 268-4555

P.O.T. @ Sta. 45+00  
1. No monument set

Begin Project  
472-84639  
Sta. 45+00



Scale: 1"=20'

DRP OPER: PMJ  
LAST REV: 2-6-2008 BY: drp

Datum Benchmark:  
BM#1 Big Ditch and Central. C.O.W. Benchmark.  
SE Corner of bridge, top of hubguard of eastbound  
traffic, West of Hoover. Brass Disk.  
DLK 7-93 Elev.=1323.23

BM#3 Chis. Top W end retaining wall at S ROW of  
Central, near NW corner 677' N. Eisenhower St.  
50.84' Rt. @ Sta. 42+82.71 Elev.=1311.02

**LEGEND**

- Pavement Removal
- Bituminous Milling and Overlay
- Asphaltic Concrete Pavement
- Fence End Post
- Wheelchair Ramp
- Transition Cross Slope from 1/4"/ft. to 3/16"/ft.

**REMOVAL OF EXISTING STRUCTURES**

STATION	SIDE	ITEM
47+06	Rt.	Bus Stop Bench
47+29	Rt.	Sign (Farm Bureau) **

\* For Information Only  
\*\* Sign to be removed by others.  
Ø See Sh. No. 81 for Sign Removals.

**Utilities**

- Gas
- Power
- Sanitary Sewer
- Storm Water Sewer
- Telephone
- Television
- Water

Aquila Network  
KDOT  
Westar Energy  
Wichita Water and Sanitary Sewer  
City of Wichita  
AT&T  
Cox Communication  
Wichita Water and Sanitary Sewer

See Sh. No. 14 & 15 for Sidewalk Geometry  
See Sh. No. 12 & 13 for Storm Sewer

**Notes:**  
Elevations Shown along Curb & Gutter are to High Edge & Top of Curb for Comb. Curb & Gutter (Type II). Adjustment are required for modified curb type.

SW Cor. Sec. 15, T27S, R1W  
1. Chis. \*\* in thimble, in old road bed.  
2. Center intersection Central and Ridge Rd.

BM#4 Chis. Top of curb E side of Gilda,  
± 120' S of S ROW of Central Ave.  
165.46' Rt. @ Sta. 47+89.76 Elev.=1309.34

Professional Engineering Consultants, P.A.  
303 S. TOPKA • WICHITA, KANSAS 67202  
316-262-2691 • FAX 316-262-3003

Designed by: PMJ Job No: 06655  
Drawn by: DRP Date: Jan. 2008

Sht. 6 of 142