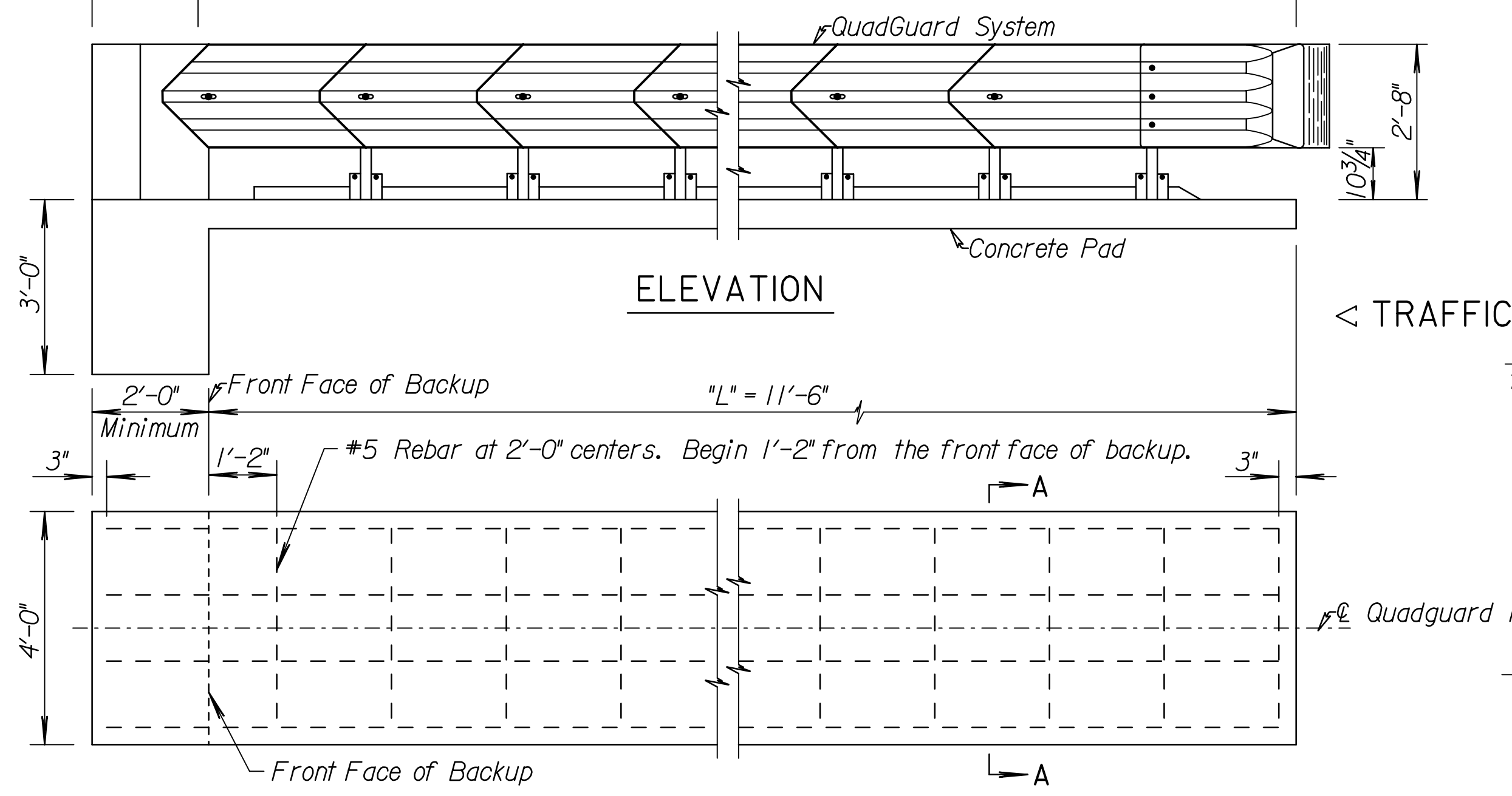
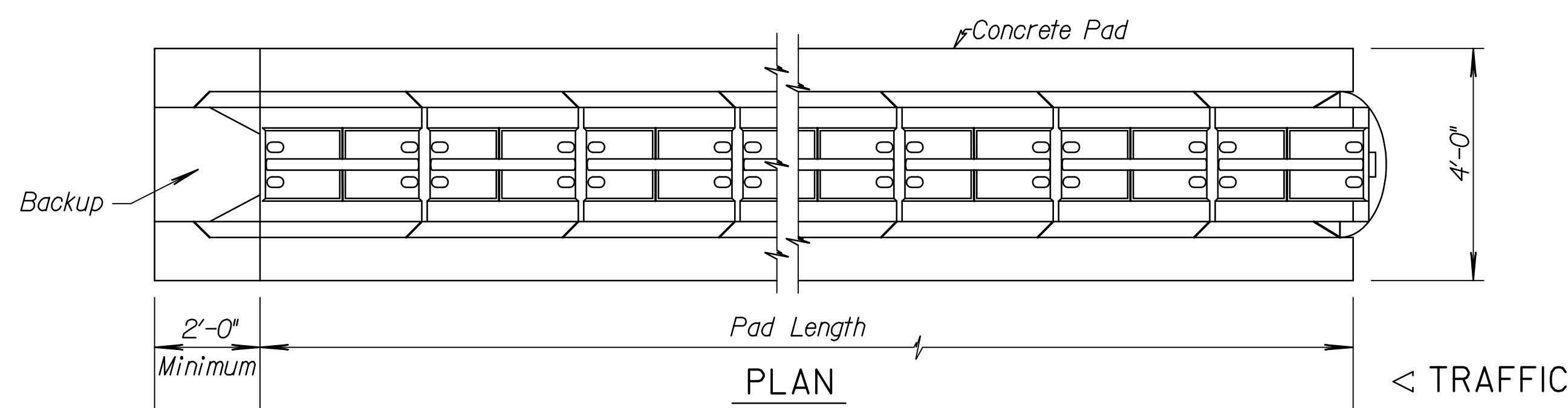


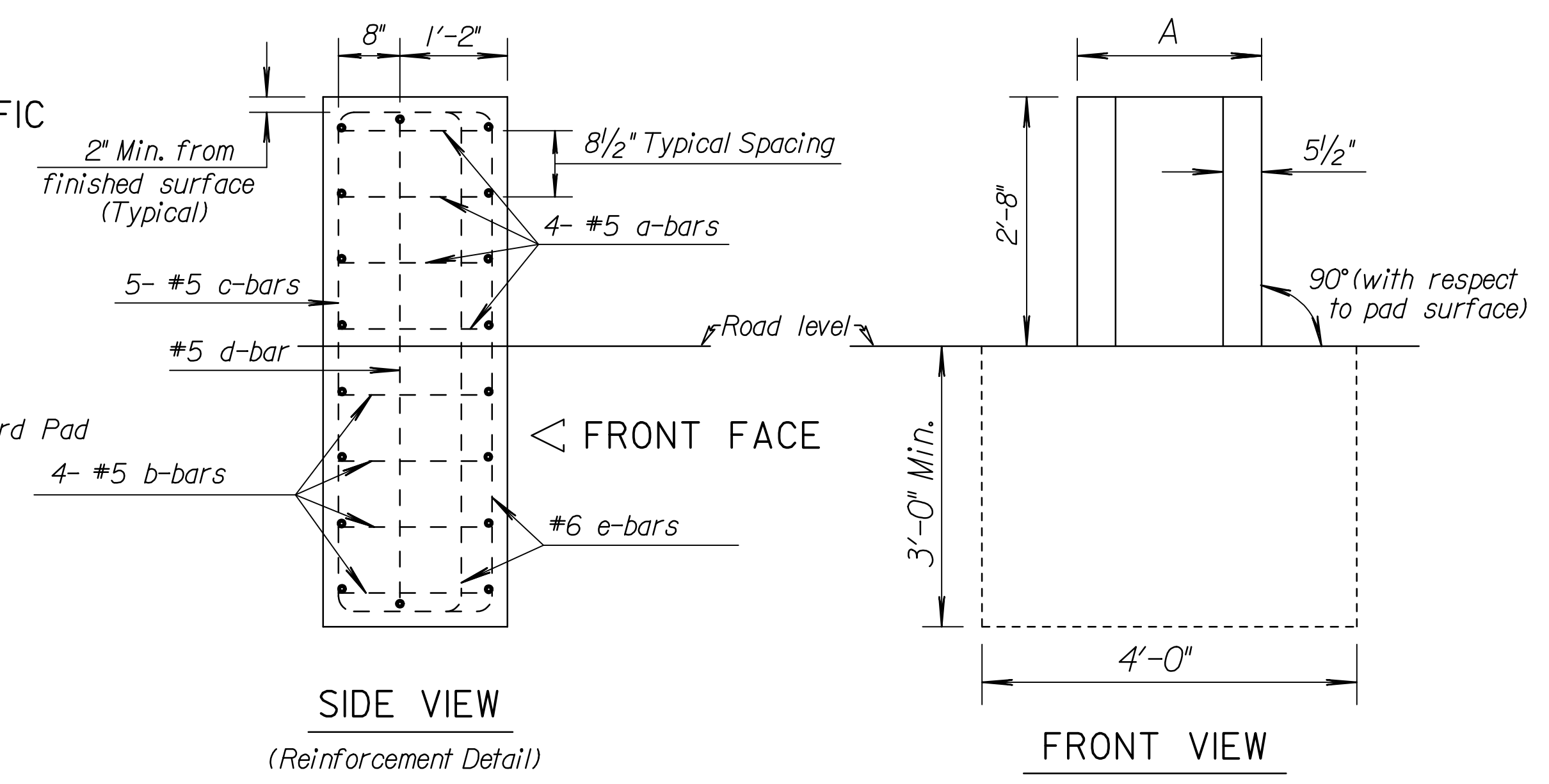
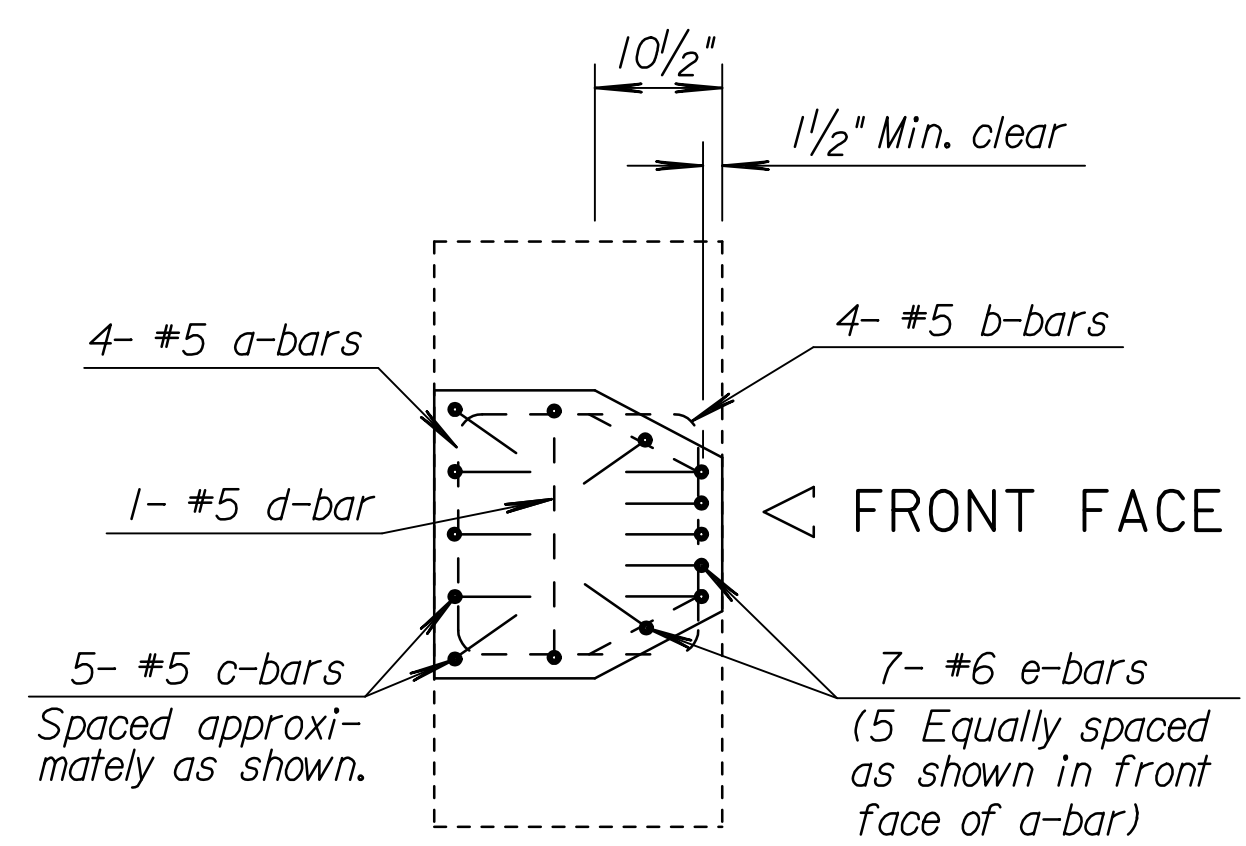
STATE	PROJECT NO.	YEAR	SHEET NO.	TOTAL SHEETS
KANSAS	472-84639	2008	34	142

Note to the Designer: The designer shall be responsible for designating dimensions "A" and "L" and the QuadGuard model number.

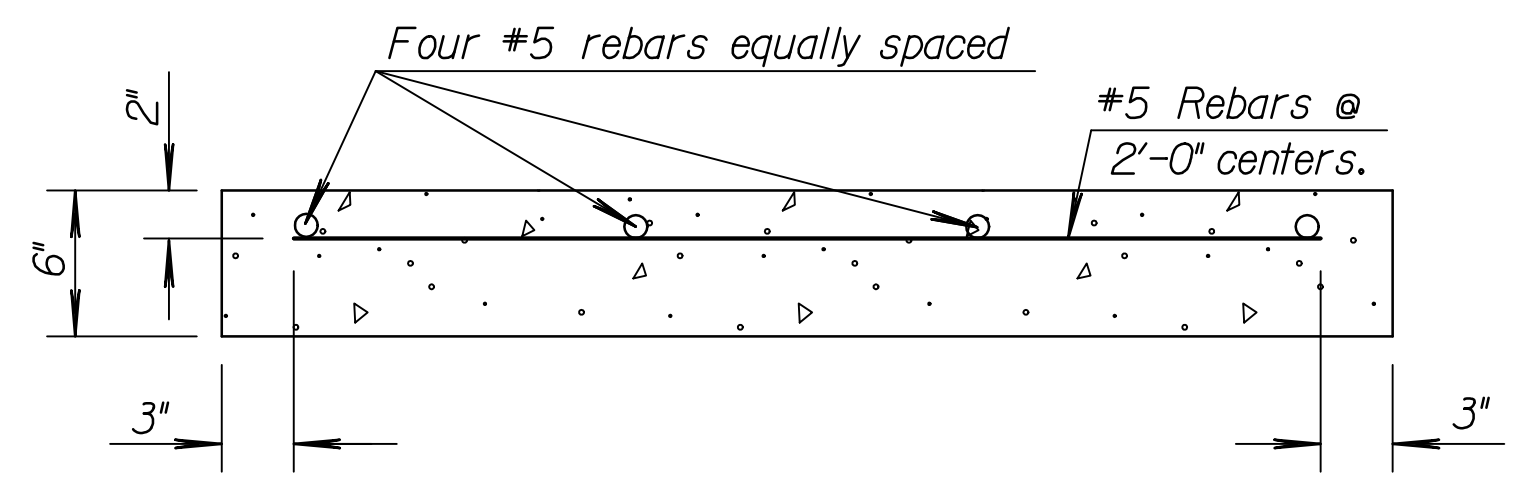


PLAN VIEW CONCRETE PAD

Note: Cross slope of pad shall not exceed 8% and not vary more than 2% from front to back. Pad and Backup Block should be tied together & poured monolithically. Concrete for pad and backup block shall have a minimum compressive strength of 4,000 psi.



CONCRETE BACKUP DETAILS



Note: Concrete Pad and associated reinforcing will not be used. The project pavement (9") reinforced will replace this concrete pad and will be included in the pavement bid items.

The Concrete Backup Details are to be utilized.

GENERAL NOTE

The QuadGuard System shall consist of the following items which shall be considered Subsidiary.

QuadGuard Model Number QS3603Y.

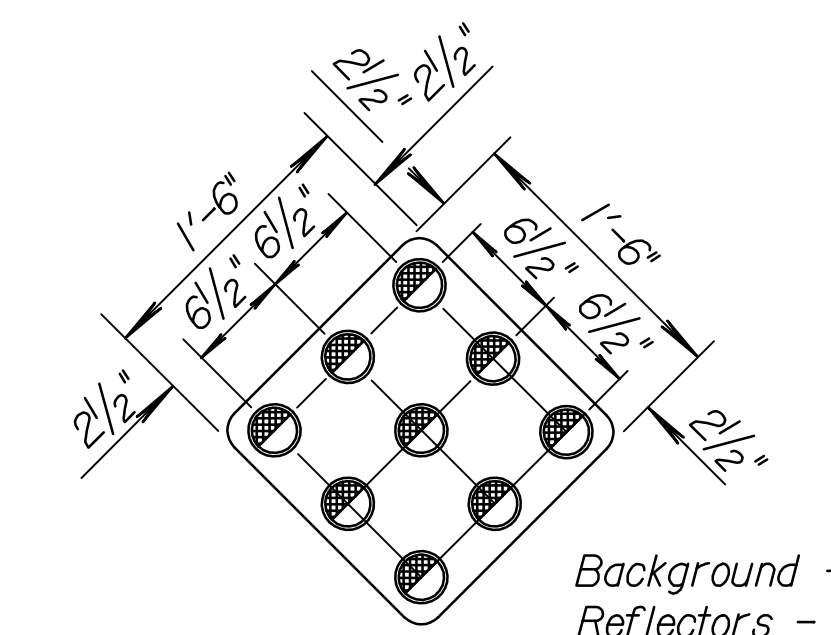
Conc. Backup Wall Assembly

Conc. Slab for Assembly

Any Equipment necessary to meet the Manufacturer's requirements for a complete and functioning system.

The Contractor shall refer to Special Provisions for additional details.

A Type I Object Marker shall be attached at the approach end of the system. The Object Marker shall be bolted or riveted to the end bay.

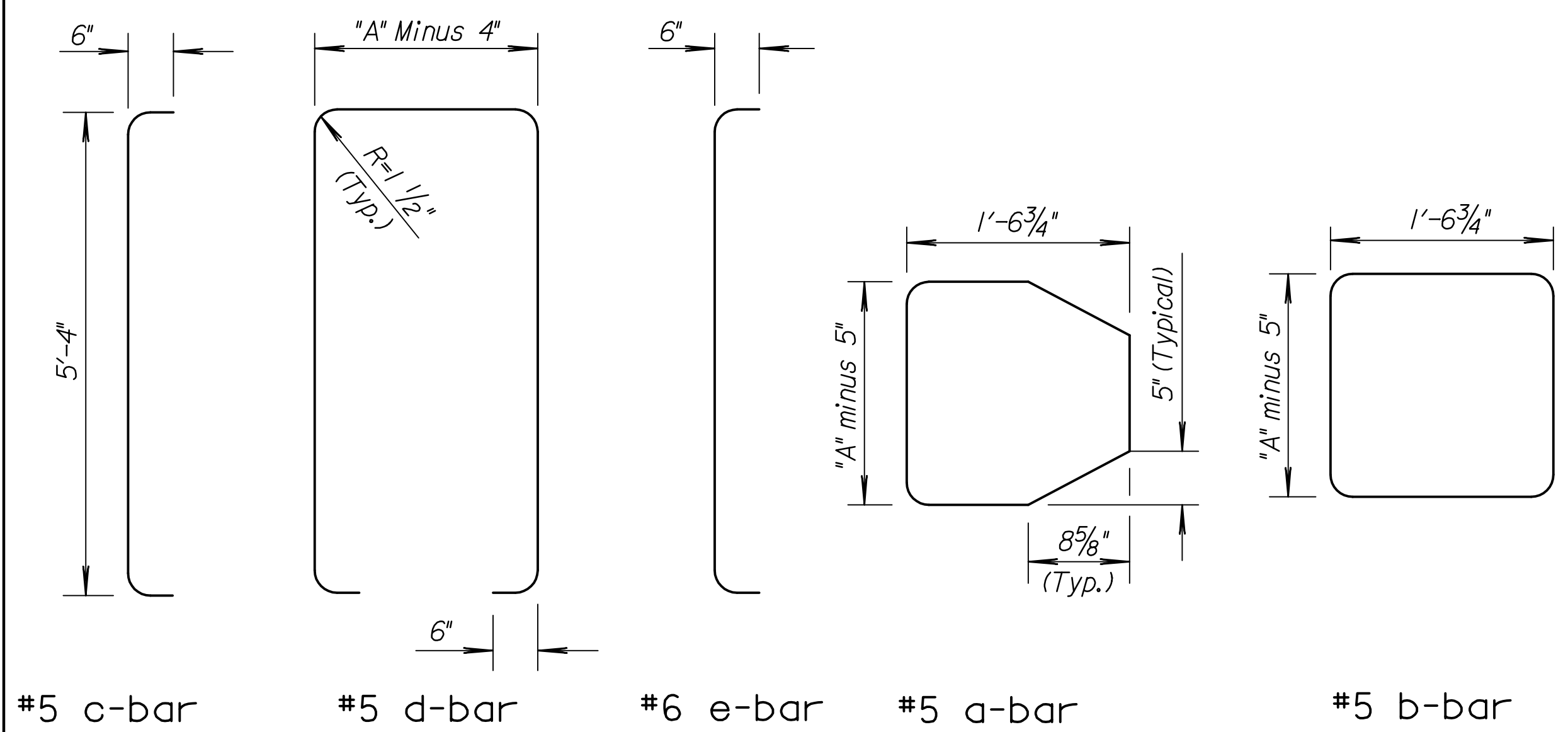


Aluminum Sign Blanks shall be ASTM B-209 (H), Alloy 6061-T6, 5154-H38, or 5052-H38. All holes shall be 3/8" in diameter.

The 3/4" diameter yellow button delineator shall comply with the Standard Specifications.

The type of adhesive used for reflective sheeting shall be heat activated or pressure sensitive.

Sign face shall be covered with regular performance reflective sheeting.



All dimensions are out-to-out on bars unless otherwise noted.

KANSAS DEPARTMENT OF TRANSPORTATION				
NO.	DATE	REVISIONS	BY	APP'D
IMPACT ATTENUATOR QUADGUARD SYSTEM				
RD626				
DESIGNED	2-12-01	QUANTITIES	APP'D. James O. Brewer	
DESIGN CK.	DETAIL CK.	QUAN. CK.	TRACED Bowser	
			TRACE CK. Seltz	

Drawn By: dtp
Plotted: 1/15/2008
File: I:\2006\06655\Standards\06655-rd626.dgn