

LOADING: HS20-44 A.A.S.H.T.O. Specification, 1983 Edition.

UNIT STRESSES:

Concrete $F'_c = 4000$ p.s.i. $F_y = 60,000$ p.s.i.
 $F_c = 1600$ p.s.i. $F_s = 24,000$ p.s.i.

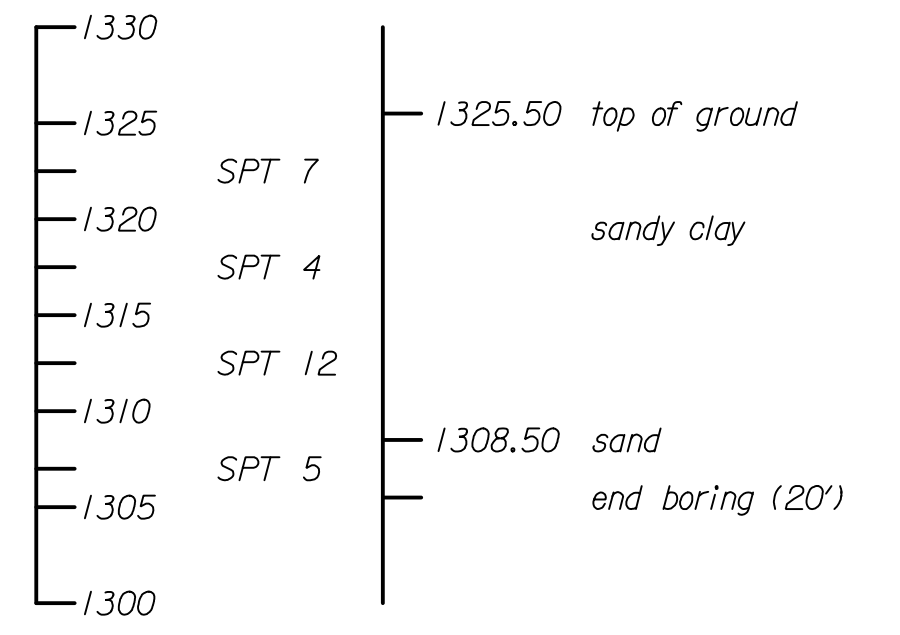
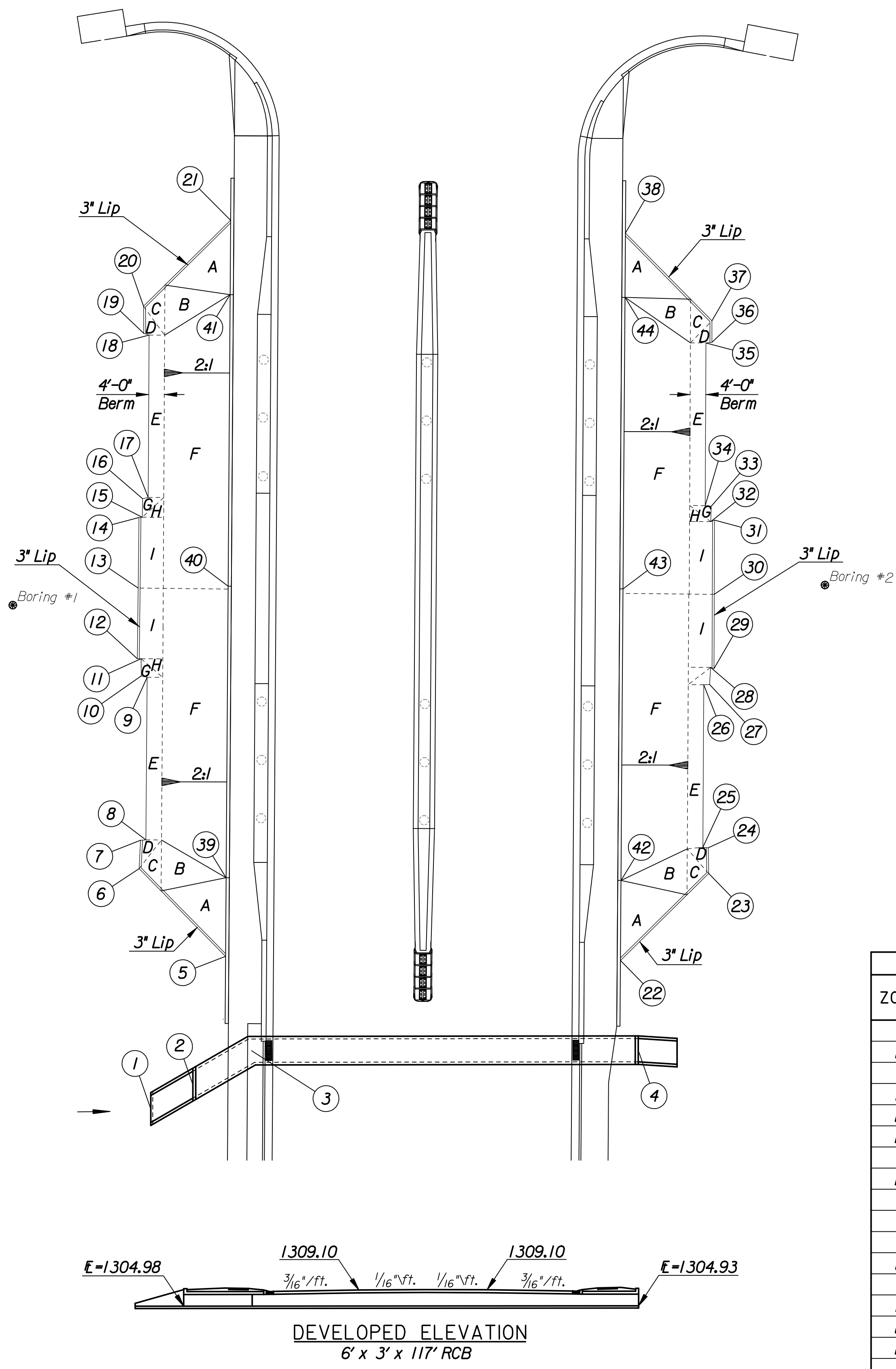
CONSTRUCTION: Only cast-in-place construction will be used without the approval of the Engineer.

EXCAVATION: All excavation shall be considered as uncleared channel.

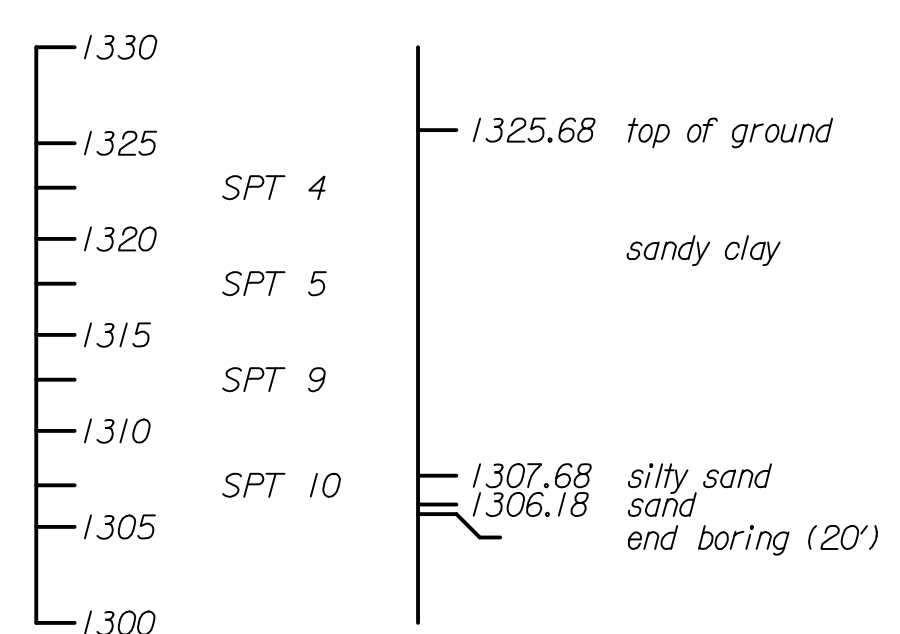
CONFLICT: If R.C.B. plan notes conflict with the General Notes from this sheet, then these General Notes will govern.

RETAINING WALL: The retaining wall will be built as depicted. All excavation shall be controlled to not damage the existing abutment fill. Granular Backfill will be placed as shown in the plans.

RIPRAP: The existing riprap will be removed and reconstructed as "Reinforced Concrete Riprap (4) (Special)" to the limits shown.



BORING NO. 1
Sta. 50+19.75, 106.22' Lt.



BORING NO. 2
Sta. 50+26.36, 102.80' Rt.

TABLE OF COORDINATES						
POINT NO.	REFERENCE	NORTHING	EASTING	STATION	OFFSET (FT.)	ELEVATION
1	E 6'x3' RCB Upstream Apron	1,688,521.2393	1,627,811.5022	48+90.35	69.80 Lt.	1304.99
2	E 6'x3' RCB Upstream Hubguard	1,688,510.6284	1,627,818.1097	48+96.69	59.03 Lt.	1304.98
3	E 6'x3' RCB 30° P.I.	1,688,495.7970	1,627,827.3453	49+05.55	43.97 Lt.	1304.97
4	E 6'x3' RCB Downstream Hubguard	1,688,396.3241	1,627,830.6637	49+06.38	55.56 Rt.	1304.93
5	Riprap Point	1,688,503.2666	1,627,851.3827	49+29.77	50.83 Lt.	1312.32
6	Riprap Point	1,688,526.2307	1,627,873.2231	49+52.18	73.24 Lt.	1323.63
7	Riprap Point	1,688,526.0732	1,627,880.5308	49+59.48	72.90 Lt.	1323.63
8	Riprap Point	1,688,524.7090	1,627,880.6761	49+59.59	71.53 Lt.	1323.27
9	Riprap Point	1,688,525.7293	1,627,922.4942	50+01.42	71.51 Lt.	1323.27
10	Riprap Point	1,688,527.2433	1,627,922.8066	50+01.77	73.01 Lt.	1324.80
11	Riprap Point	1,688,527.4426	1,627,927.2263	50+06.19	73.10 Lt.	1324.80
12	Riprap Point	1,688,528.4106	1,627,927.1972	50+06.19	74.07 Lt.	1324.80
13	Riprap Point	1,688,528.7712	1,627,945.3639	50+24.36	73.97 Lt.	1324.30
14	Riprap Point	1,688,529.1317	1,627,963.5306	50+42.53	73.88 Lt.	1324.80
15	Riprap Point	1,688,528.2958	1,627,963.6068	50+42.59	73.04 Lt.	1324.80
16	Riprap Point	1,688,528.3551	1,627,968.3800	50+47.36	72.98 Lt.	1324.80
17	Riprap Point	1,688,526.9341	1,627,968.7613	50+47.70	71.55 Lt.	1323.27
18	Riprap Point	1,688,528.0477	1,628,010.5135	50+89.47	71.62 Lt.	1323.27
19	Riprap Point	1,688,529.4154	1,628,010.9112	50+89.90	72.97 Lt.	1323.40
20	Riprap Point	1,688,529.7181	1,628,017.8925	50+96.89	73.10 Lt.	1323.40
21	Riprap Point	1,688,508.0150	1,628,040.7122	51+19.16	50.83 Lt.	1311.88
22	Riprap Point	1,688,401.6226	1,627,853.5593	49+29.40	50.83 Rt.	1312.28
23	Riprap Point	1,688,379.6489	1,627,876.6636	49+51.94	73.38 Rt.	1323.50
24	Riprap Point	1,688,379.9438	1,627,883.2770	49+58.56	73.25 Rt.	1323.50
25	Riprap Point	1,688,381.3702	1,627,883.3455	49+58.67	71.83 Rt.	1323.25
26	Riprap Point	1,688,382.4582	1,627,925.1494	50+00.48	71.79 Rt.	1323.25
27	Riprap Point	1,688,380.9525	1,627,925.2676	50+00.56	73.29 Rt.	1325.00
28	Riprap Point	1,688,380.8409	1,627,929.6508	50+04.94	73.52 Rt.	1325.00
29	Riprap Point	1,688,379.9530	1,627,929.3963	50+04.67	74.40 Rt.	1325.00
30	Riprap Point	1,688,380.4981	1,627,948.4834	50+23.76	74.33 Rt.	1324.50
31	Riprap Point	1,688,381.0431	1,627,967.5706	50+42.86	74.26 Rt.	1325.20
32	Riprap Point	1,688,381.9922	1,627,967.1405	50+42.45	73.31 Rt.	1325.20
33	Riprap Point	1,688,382.0299	1,627,971.0866	50+46.40	73.37 Rt.	1325.20
34	Riprap Point	1,688,383.5706	1,627,971.2284	50+46.58	71.83 Rt.	1323.25
35	Riprap Point	1,688,384.7035	1,628,013.0728	50+88.44	71.75 Rt.	1323.25
36	Riprap Point	1,688,383.1701	1,628,013.2720	50+88.60	73.28 Rt.	1324.40
37	Riprap Point	1,688,383.3586	1,688,383.3586	50+94.14	73.23 Rt.	1324.40
38	Riprap Point	1,688,406.3147	1,628,040.6422	51+16.54	50.83 Rt.	1312.27
39	Riprap Point	1,688,503.7739	1,627,871.6074	49+50.00	50.83 Lt.	1314.75
40	Riprap Point	1,688,505.6543	1,627,946.5838	50+25.00	50.83 Lt.	1314.75
41	Riprap Point	1,688,507.5346	1,628,021.5602	51+00.00	50.83 Lt.	1314.75
42	Riprap Point	1,688,402.1392	1,627,874.1564	49+50.00	50.83 Rt.	1314.75
43	Riprap Point	1,688,404.0196	1,627,949.1328	50+25.00	50.83 Rt.	1314.75
44	Riprap Point	1,688,405.9000	1,628,024.1092	51+00.00	50.83 Rt.	1314.75

* Riprap elevations to be field adjusted, as required, to fit existing contours.

RIPRAP AREA					
ZONE	SIDE	AREA (SQ. FT.)	ZONE	SIDE	AREA (SQ. FT.)
A	Lt. S. Bd.	188.94	A	Rt. S. Bd.	195.87
B	Lt. S. Bd.	122.53	B	Rt. S. Bd.	112.69
C	Lt. S. Bd.	41.81	C	Rt. S. Bd.	36.78
D	Lt. S. Bd.	21.91	D	Rt. S. Bd.	20.12
E	Lt. S. Bd.	167.30	E	Rt. S. Bd.	168.10
F	Lt. S. Bd.	1292.74	F	Rt. S. Bd.	1331.76
G	Lt. S. Bd.	13.64	G	Rt. S. Bd.	14.31
H	Lt. S. Bd.	14.98	H	Rt. S. Bd.	13.53
I	Lt. S. Bd.	132.59	I	Rt. S. Bd.	133.82
A	Lt. N. Bd.	180.00	A	Rt. N. Bd.	156.18
B	Lt. N. Bd.	120.97	B	Rt. N. Bd.	105.99
C	Lt. N. Bd.	39.35	C	Rt. N. Bd.	34.55
D	Lt. N. Bd.	20.91	D	Rt. N. Bd.	17.11
E	Lt. N. Bd.	167.10	E	Rt. N. Bd.	167.40
F	Lt. N. Bd.	1316.89	F	Rt. N. Bd.	1334.44
G	Lt. N. Bd.	22.25	G	Rt. N. Bd.	12.19
H	Lt. N. Bd.	15.76	H	Rt. N. Bd.	12.63
I	Lt. N. Bd.	130.36	I	Rt. N. Bd.	136.84

DSNR: RAS OPER: DRP SCALE: 1/2006/06655/BRIDGE/RCB/06655-000-C-RCBGENNOTE.DGN LAST REV: 12-11-2007 BY: DRP

Revision		By		Date	
CENTRAL AVENUE					
STRUCTURAL GENERAL NOTES AND DETAILS					
JAMES L. ARMOUR, P.E. - CITY ENGINEER CITY OF WICHITA PROJECT NO. 472-84639					
Professional Engineering Consultants, P.A. 303 S. TOPEKA • WICHITA, KANSAS 67202 316-262-2691 • FAX 316-262-3003					
Designed by	RAS	Job No.	06655	Sht. 37 of 142	
Drawn by	DRP	Date	Jan. 2008		