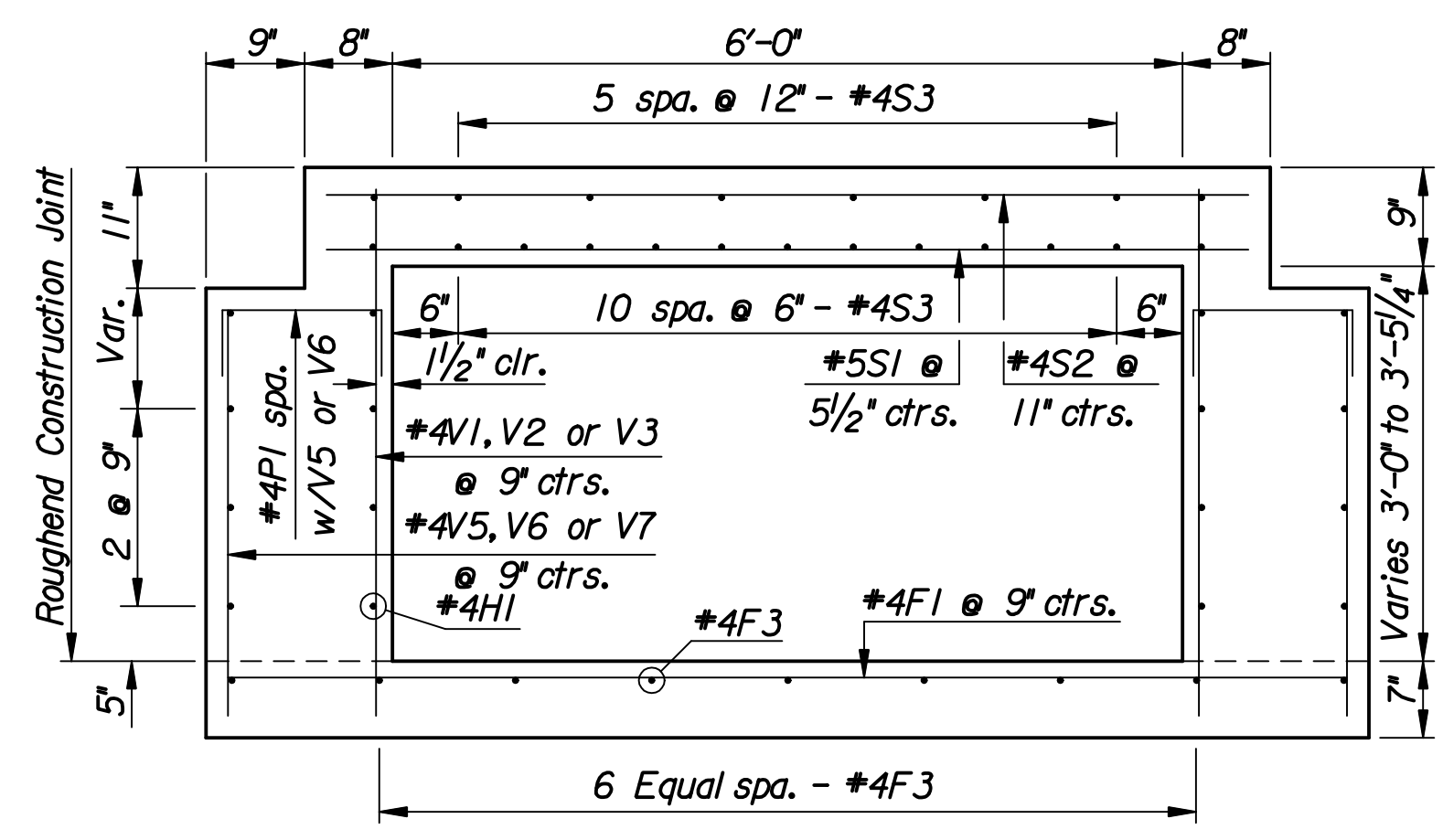
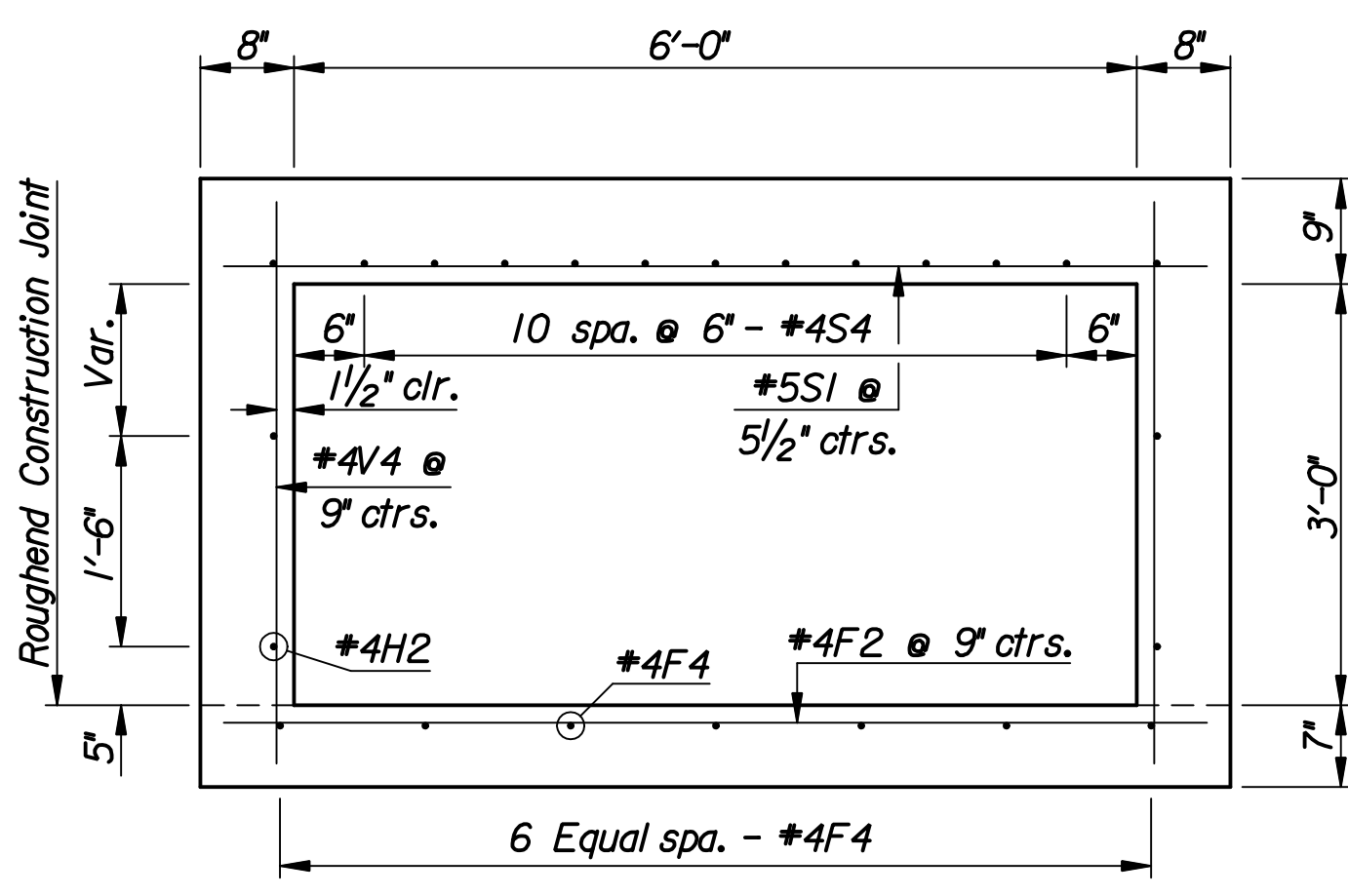


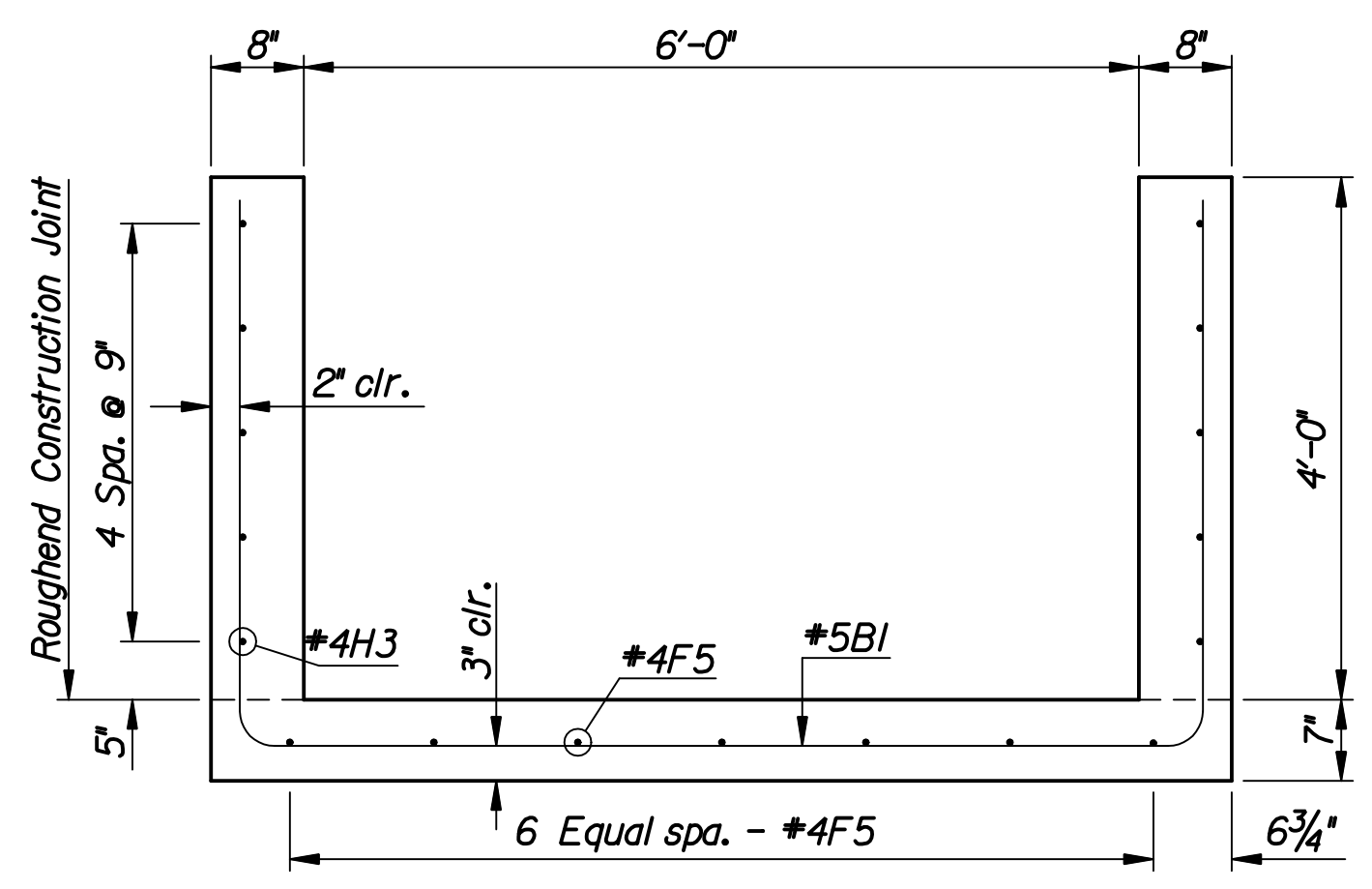
DSNR: RAS OPER: SRP SCALE: I:/2006/06655/BRIDGE/RCB/0655-000_C-RCBSTAGEIB.DGN LAST REV: 12-11-2007 BY: DRP



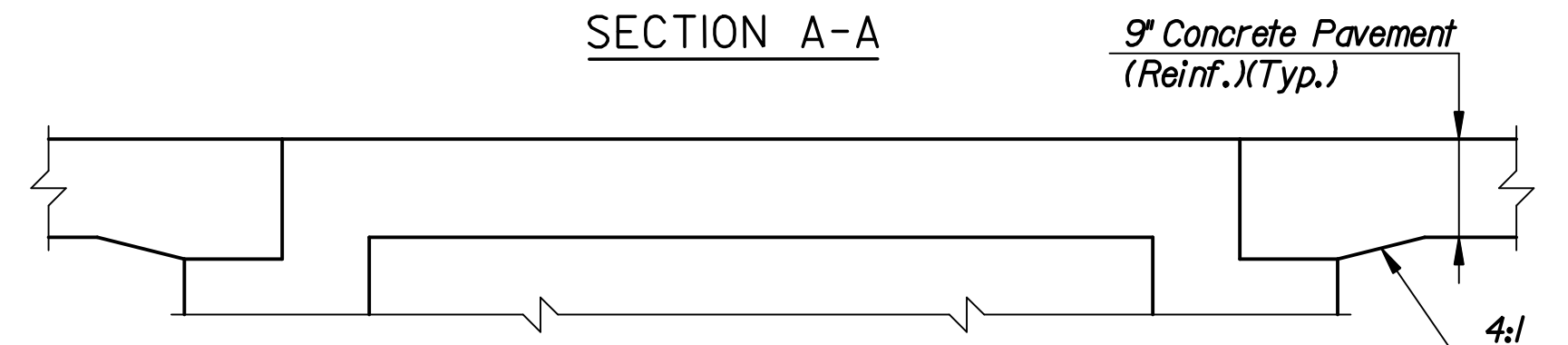
SECTION A-A



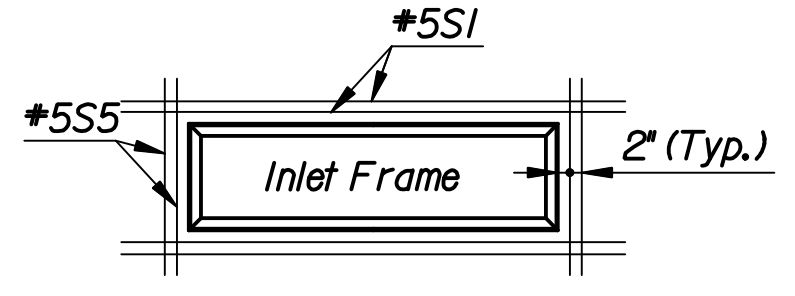
SECTION B-B



SECTION C-C

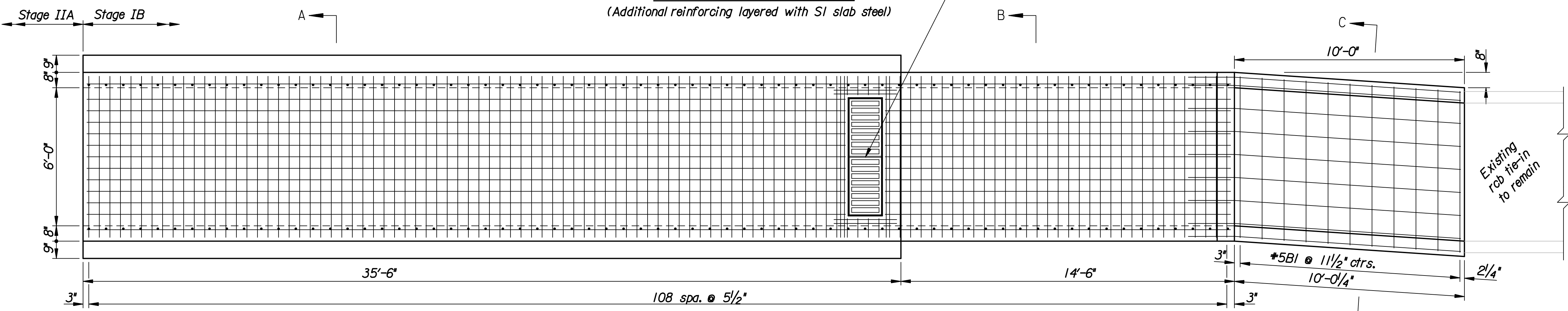


SECTION A-A
(Showing Pavement & Curbing Detail at RCB)



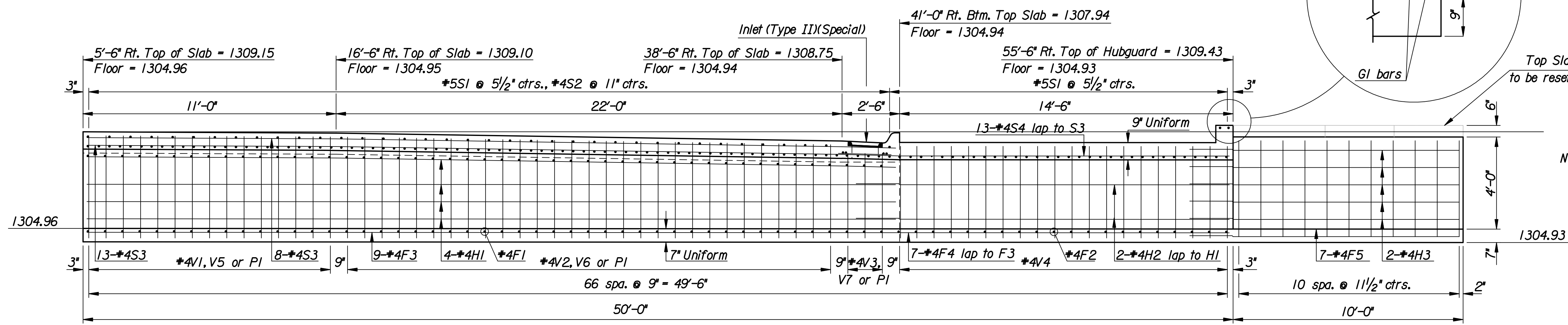
INLET (TYPE II)(SPECIAL)
(Additional reinforcing layered with SI slab steel)

Inlet (Type II)(Special)
(Pier Protection not shown for clarity)



PLAN

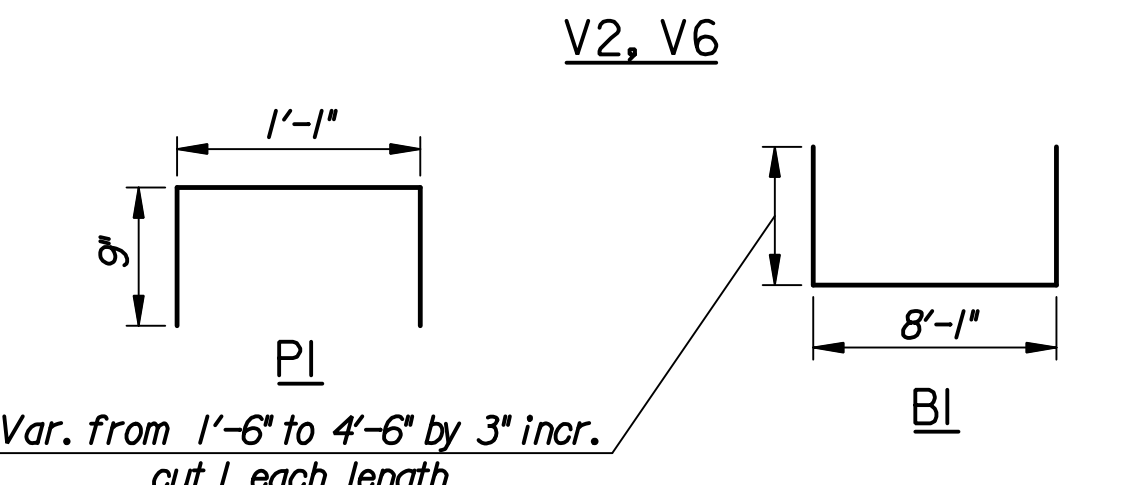
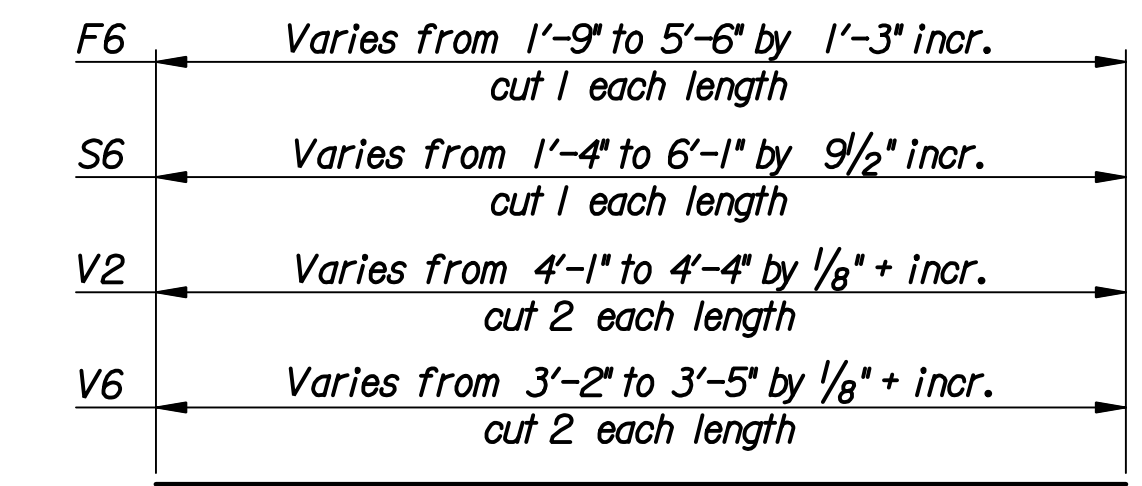
(Showing reinforcing in bottom of top slab & headwall area)



ELEVATION

REINFORCING STEEL						
Straight Bars			Bent Bars			
Mark	No.	Size	Length	Mark	No.	Size
F1	48	#4	8'-6"	B1	11	#5
F2	19	#4	7'-0"	P1	48	#4
F3	9	#4	34'-2"	V2	58	#4
F4	7	#4	11'-4"	V6	58	#4
F5	7	#4	11'-10"			
G1	2	#6	7'-0"			
H1	16	#4	34'-2"			
H2	4	#4	11'-4"			
H3	10	#4	11'-10"			
S1	113	#5	7'-0"			
S2	37	#4	7'-0"			
S3	21	#4	34'-2"			
S4	13	#4	11'-4"			
S5	4	#5	3'-1"			
V1	30	#4	4'-5"			
V3	6	#4	3'-10"			
V4	40	#4	4'-0"			
V5	30	#4	3'-6"			
V7	6	#4	2'-11"			

SUMMARY OF QUANTITIES		
Item	Quantity	Unit
Concrete(Grade 4.0)(AE)	36.7	C.Y.
Reinforcing Steel (Grade 60)(Epoxy)	3604	Lbs.



BENDING DIAGRAMS
Dimensions are out to out of bars

Note: Lap #4 bars 1'-10"

No.	Revision	By	Date
CENTRAL AVENUE			
RCB DETAILS			
STAGE IB			
JAMES L. ARMOUR, P.E. - CITY ENGINEER CITY OF WICHITA PROJECT NO. 472-34639			
Professional Engineering Consultants, P.A. 303 S. TOPEKA • WICHITA, KANSAS 67202 316-262-2691 • FAX 316-262-3003			
Designed by	RAS	Job No.	06655
Drawn by	DRP	Date	Jan. 2008
			Sht. 38 of 142