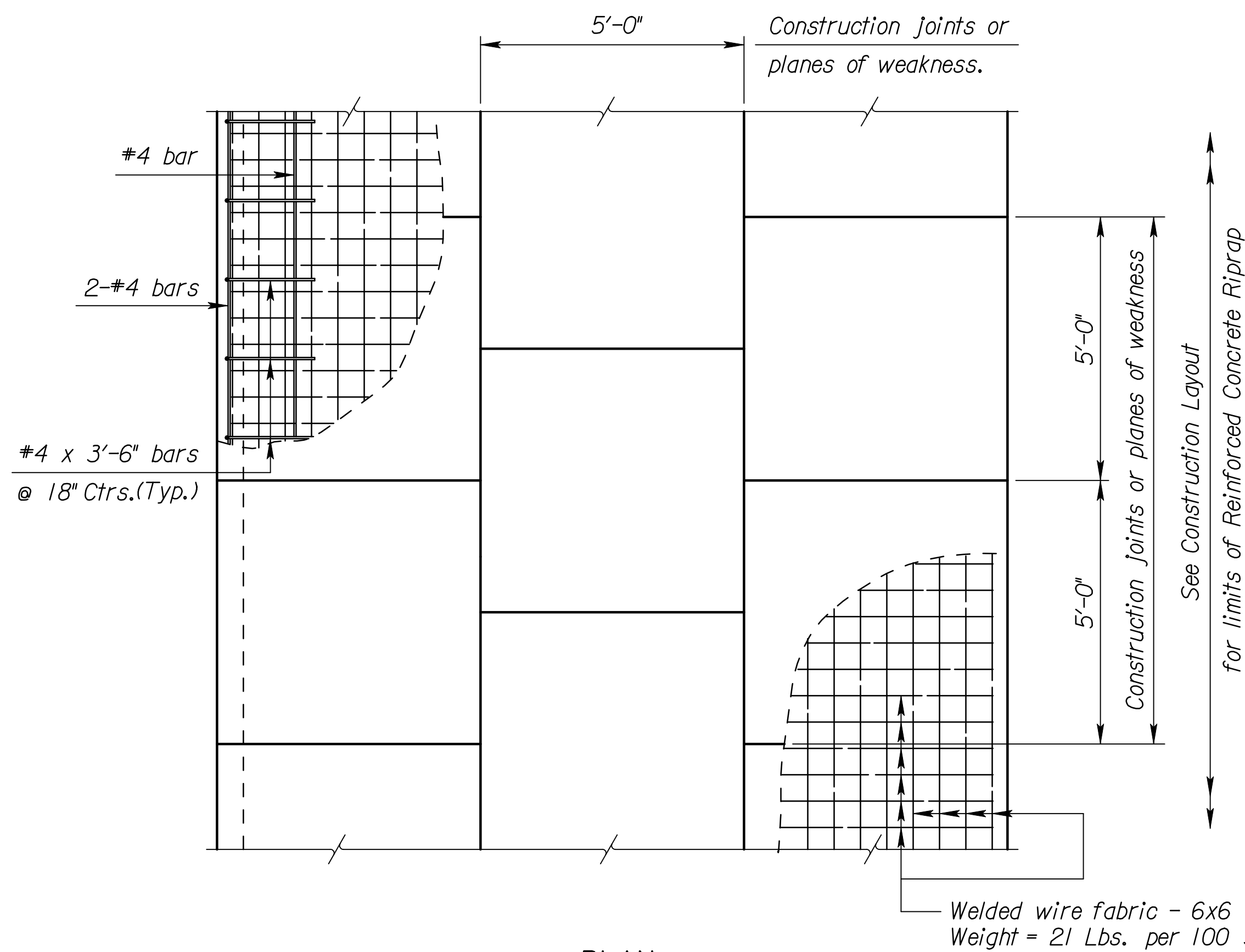
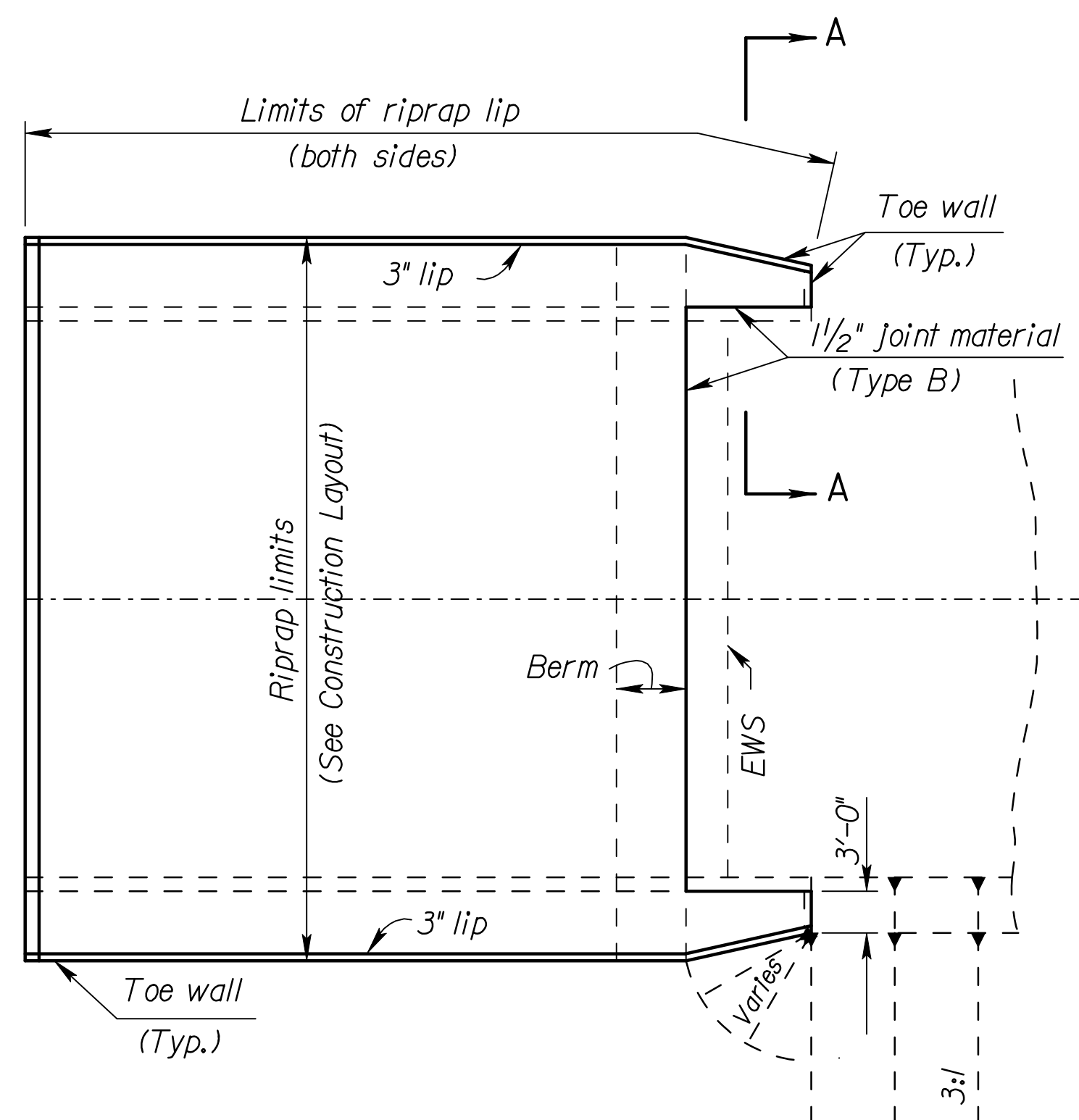


STATE	PROJECT NO.	YEAR	SHEET NO.	TOTAL SHEETS
KANSAS	472-84639	2008	46	142



PLAN
(Showing Joint Layout)



TYPICAL PLAN

Notes:

Use Concrete (Grade 3.0)(AE) for the riprap.

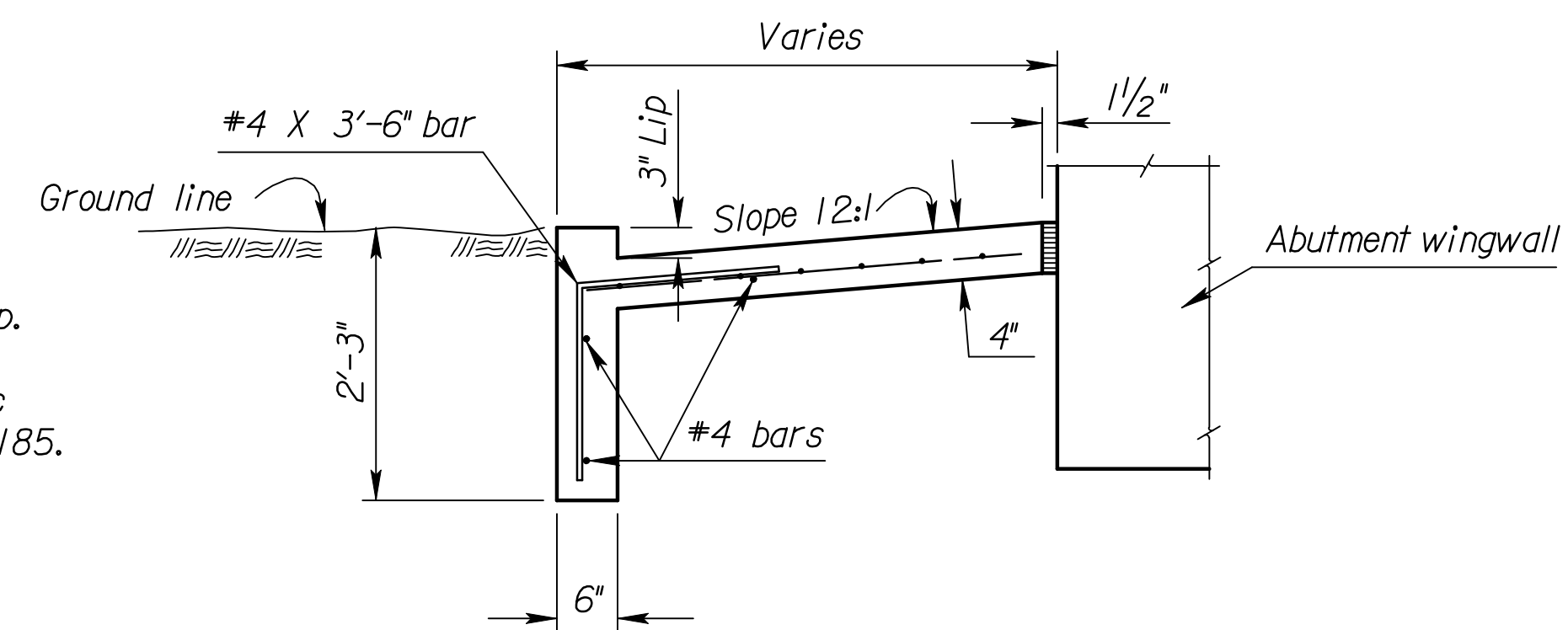
Use 6x6 - W1.4 x W1.4 welded wire fabric conforming to the requirements of ASTM A185.

Use reinforcing steel conforming to the requirements of ASTM A615, Grade 60.

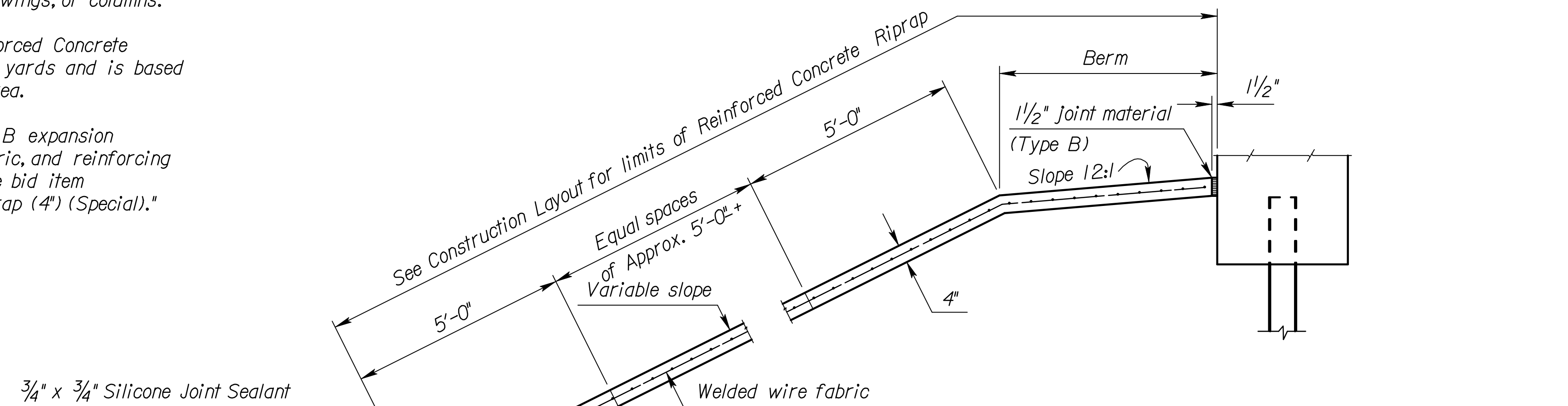
Place 1/2" Type B expansion material in the joints caused by any intersection of the riprap with the abutment, wings, or columns.

Measurement of the Reinforced Concrete Riprap shall be in square yards and is based on the outside surface area.

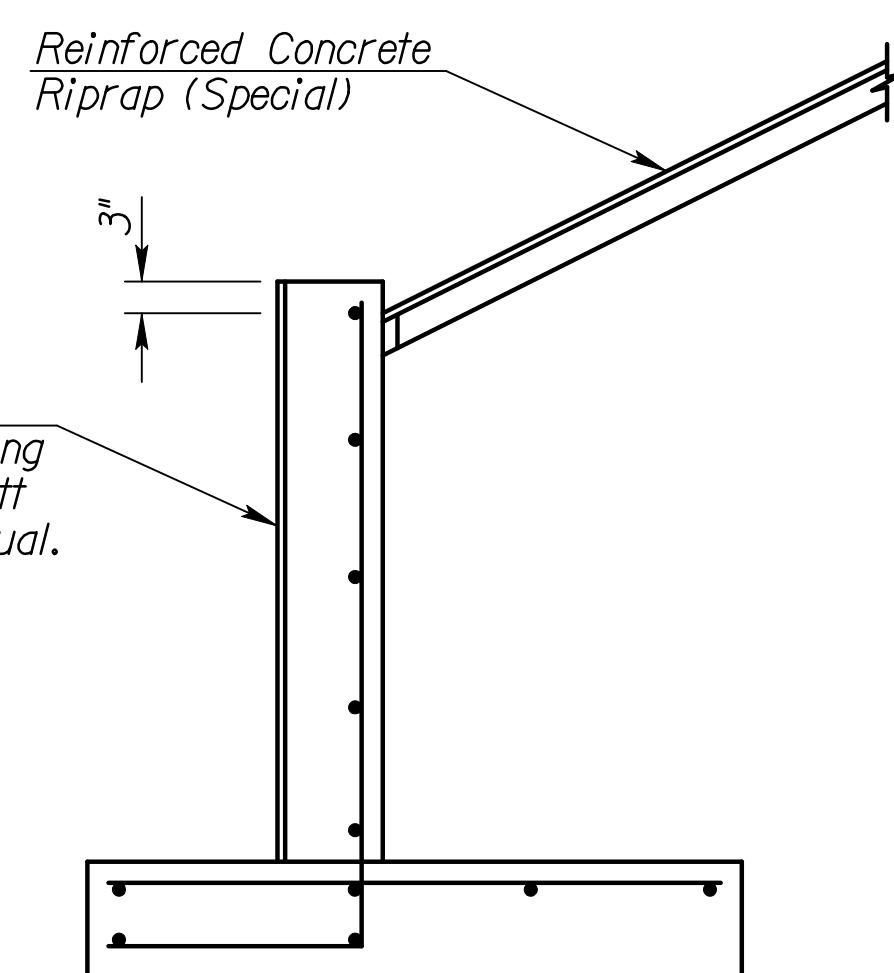
The toe walls, 3" lip, Type B expansion material, welded wire fabric, and reinforcing steel are subsidiary to the bid item "Reinforced Concrete Riprap (4") (Special)."



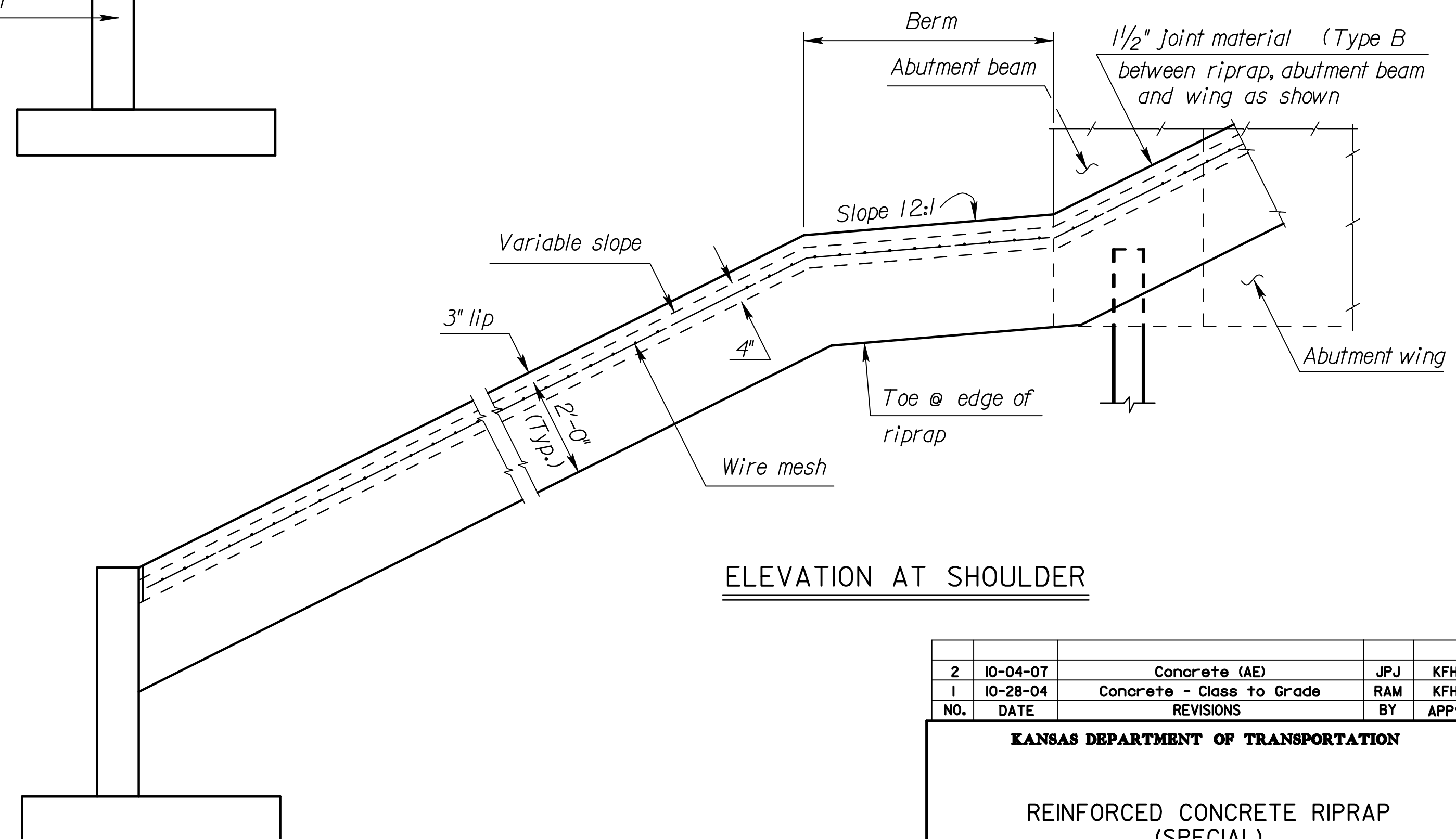
SECTION A-A



TYPICAL CROSS SECTION



WALL TEXTURE ELEVATION



ELEVATION AT SHOULDER

Std. Base File: br130.dgn
 Plotted By: drp
 File: A:\2006\06655\Standards\06655-br130.dgn
 Plot Date: 11/15/2008

2	10-04-07	Concrete (AE)	JPJ	KFH
1	10-28-04	Concrete - Class to Grade	RAM	KFH
NO.	DATE	REVISIONS	BY	APP'D

KANSAS DEPARTMENT OF TRANSPORTATION			
REINFORCED CONCRETE RIPRAP (SPECIAL)			
BR130			
FHWA APPROVAL	8-24-88 APP'D	KENNETH F. HURST	
DESIGNED	DETAILED	RDR QUANTITIES	TRACED
DESIGN CK.	DETAIL CK.	JVJ QUAN.CK.	TRACE CK.