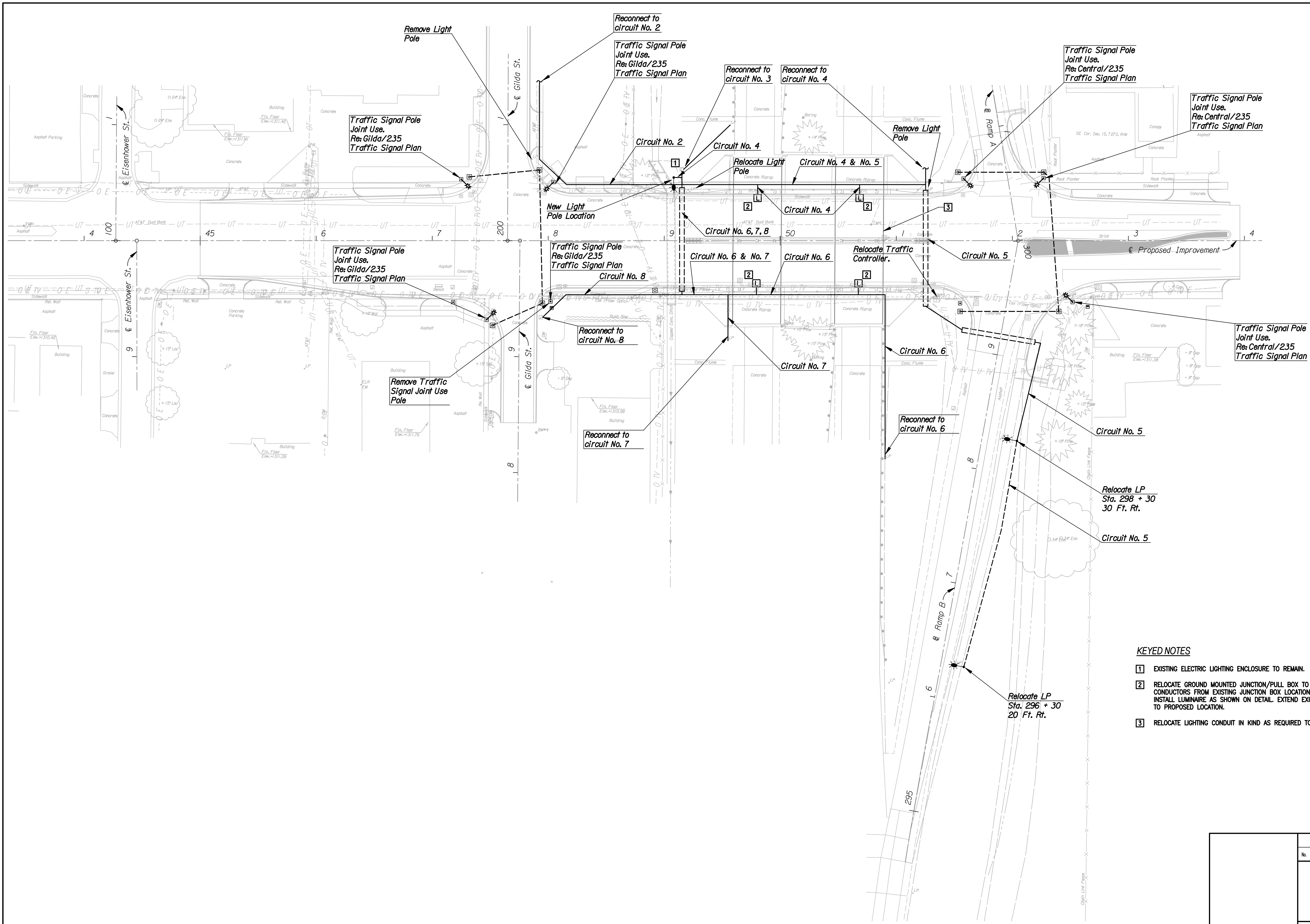


DSNR: WAN OPER: WAN SCALE: 1" = 40'
 E:/2006/06655/58-Light.dgn LAST REV: 12-14-2007 BY: WAN



KEYED NOTES

- 1 EXISTING ELECTRIC LIGHTING ENCLOSURE TO REMAIN.
- 2 RELOCATE GROUND MOUNTED JUNCTION/PULL BOX TO ABOVE CONCRETE SAFETY BARRIER AND REINSTALL. EXTEND CONDUIT AND CONDUCTORS FROM EXISTING JUNCTION BOX LOCATION TO PROPOSED LOCATION. REMOVE EXISTING UNDERPASS LUMINAIRE AND INSTALL LUMINAIRE AS SHOWN ON DETAIL. EXTEND EXISTING CONDUIT AND CONDUCTORS FROM EXISTING LUMINAIRE LOCATION TO PROPOSED LOCATION.
- 3 RELOCATE LIGHTING CONDUIT IN KIND AS REQUIRED TO CLEAR BRIDGE MOUNTED SIGN. SEE SH. NO. 97 & 98.

No.	Revision	By	Date
CENTRAL AVENUE			
LIGHTING PLAN			
JAMES L. ARMOUR, P.E.—CITY ENGINEER CITY OF WICHITA PROJECT NO. 472-84639			
Professional Engineering Consultants, P.A. 303 S. TOPEKA • WICHITA, KANSAS 67202 316-262-2691 • FAX 316-262-3003			
Designed by	SMS	Job No.	06655
Drawn by	WAN	Date	Jan. 2008
			Sht. 58 of 142

