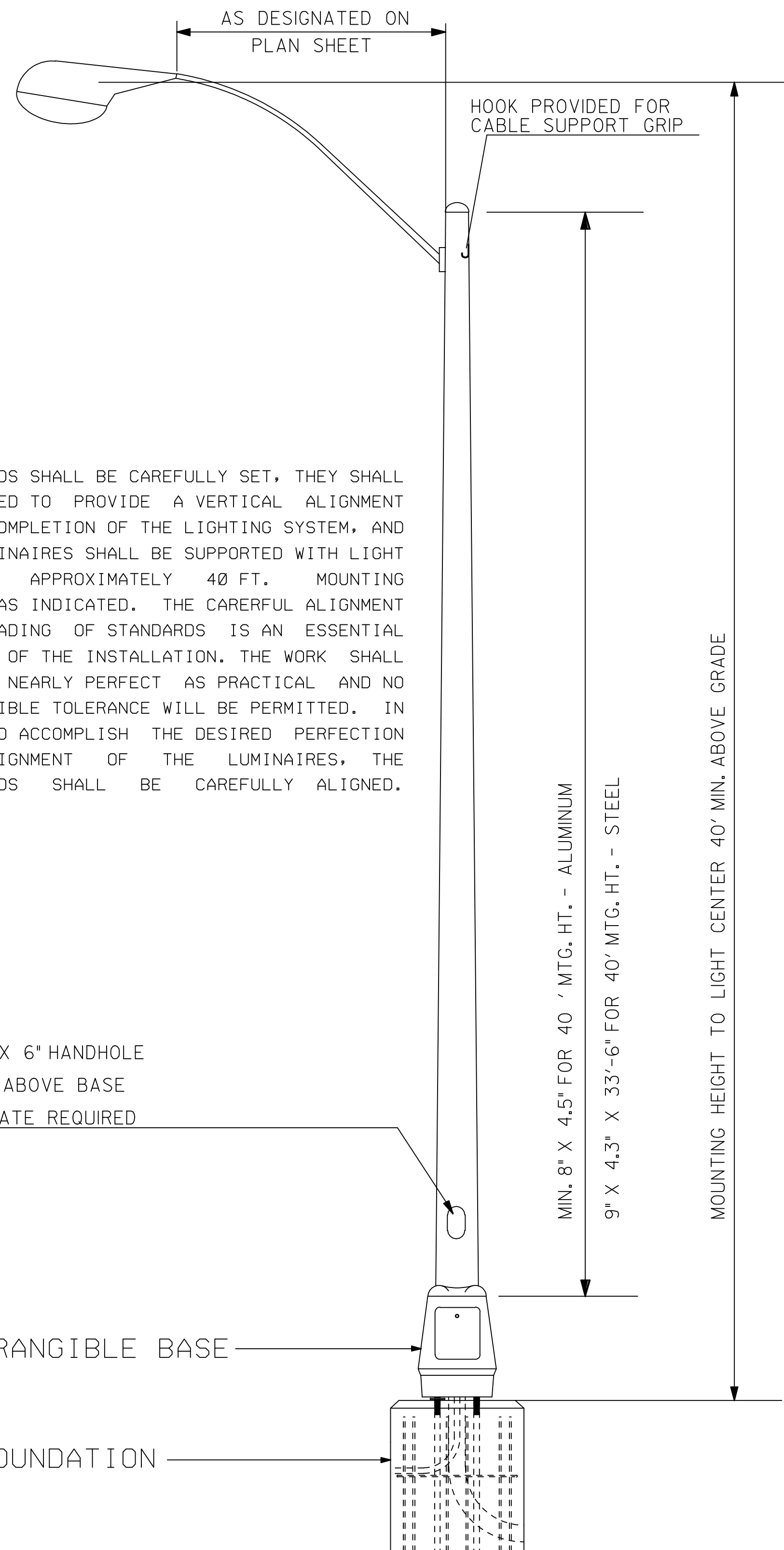


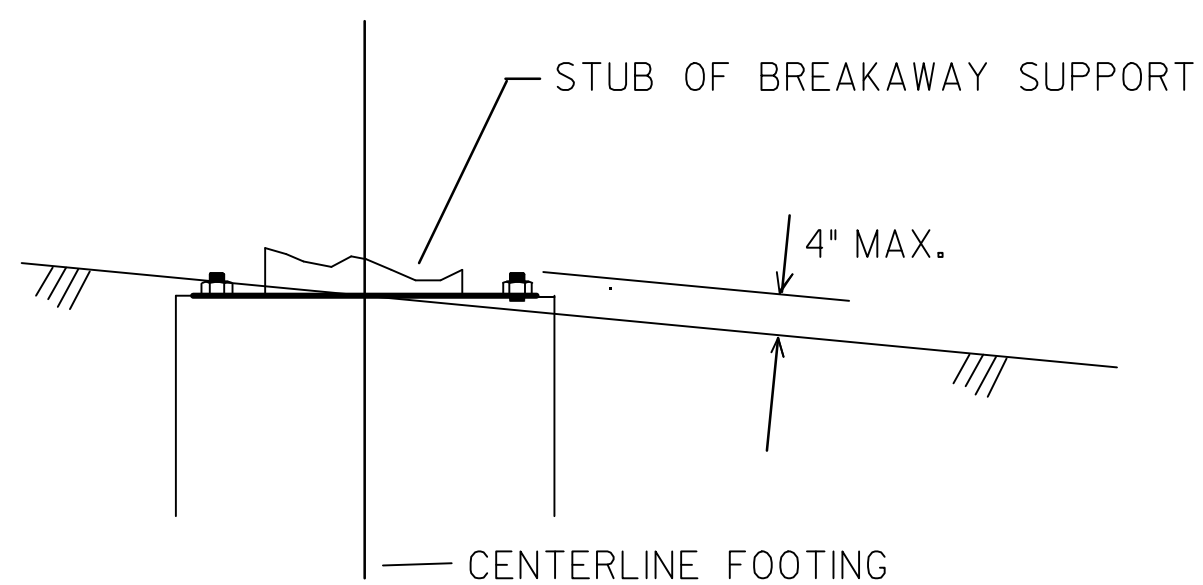
STATE	PROJECT NO.	YEAR	SHEET NO.	TOTAL SHEETS
KANSAS	472-84639	2008	60	142

GROUNDING NOTE:
LIGHT STANDARDS SHALL BE GROUNDED BY MEANS OF A NO.6 AWG STRANDED BARE COPPER GROUND WIRE BOLTED TO THE INSIDE OF THE LIGHT STANDARD SHAFT WITH A 1 1/2" GROUNDING NUT. GROUND WIRE SHALL BE CONNECTED TO THE COPPERCLAD GROUND ROD BY MEANS OF A GROUND ROD CLAMP WITH AN EXOTHERMIC CONNECTION.



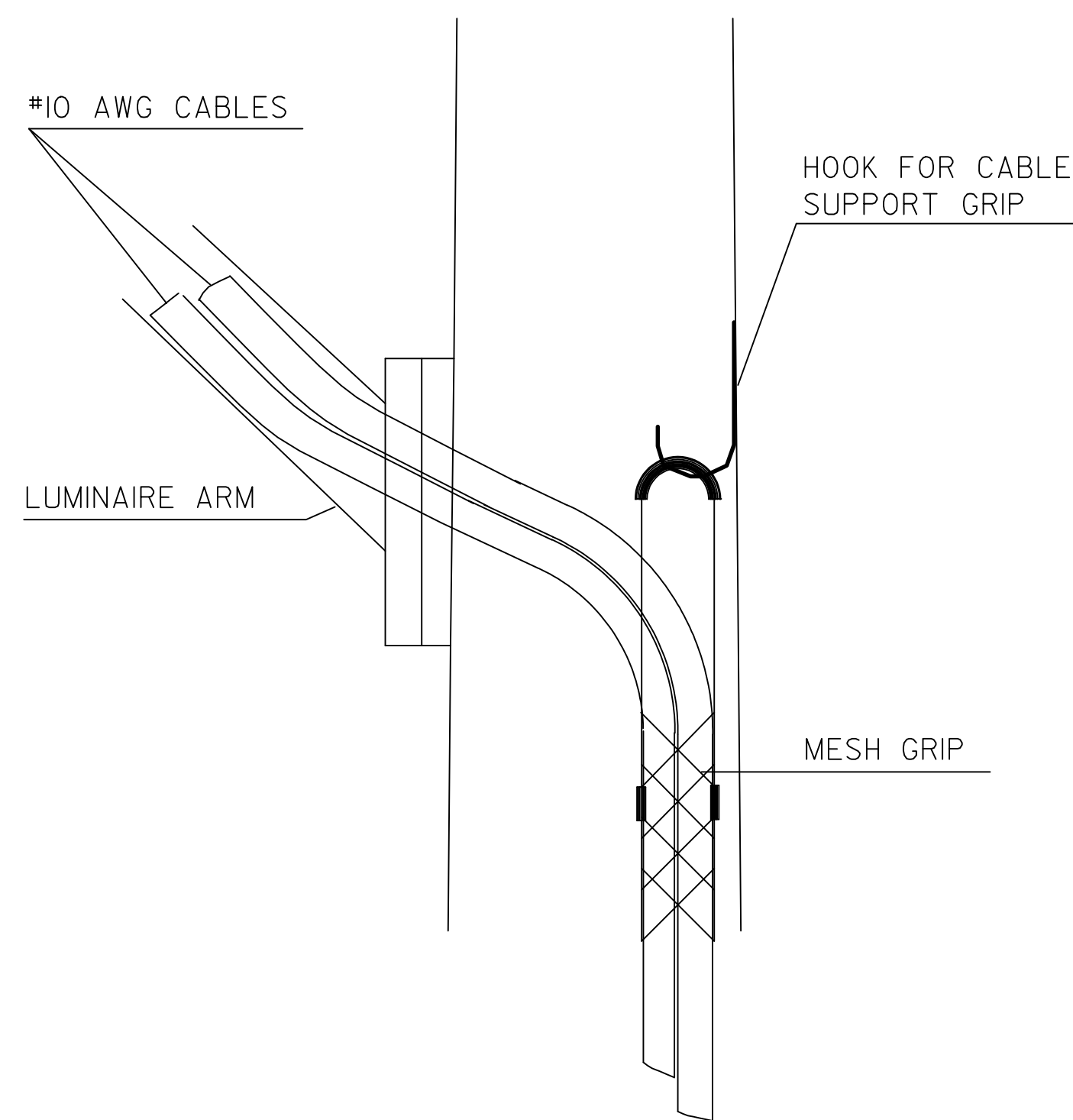
NOTES:
STANDARDS SHALL BE CAREFULLY SET, THEY SHALL BE RAKED TO PROVIDE A VERTICAL ALIGNMENT UPON COMPLETION OF THE LIGHTING SYSTEM, AND ALL LUMINAIRES SHALL BE SUPPORTED WITH LIGHT CENTERS APPROXIMATELY 40 FT. MOUNTING HEIGHT AS INDICATED. THE CAREFUL ALIGNMENT AND GRADING OF STANDARDS IS AN ESSENTIAL FEATURE OF THE INSTALLATION. THE WORK SHALL BE AS NEARLY PERFECT AS PRACTICAL AND NO PERCEPTIBLE TOLERANCE WILL BE PERMITTED. IN ORDER TO ACCOMPLISH THE DESIRED PERFECTION OF ALIGNMENT OF THE LUMINAIRES, THE STANDARDS SHALL BE CAREFULLY ALIGNED.

THE 4" MAX. IS A REQUIREMENT OF THE BREAKAWAY CRITERIA IN THE LATEST EDITION OF AASHTO STANDARD SPECIFICATIONS FOR STRUCTURAL SUPPORTS FOR HIGHWAY SIGNS, LUMINAIRES AND TRAFFIC SIGNALS (NO. 12.5.3).



BREAKAWAY SUPPORT STUB CLEARANCE DIAGRAM

NOTE:
THE FOUNDATION SHALL BE INSTALLED TO MEET THE BREAKAWAY SUPPORT STUB CLEARANCE OF 4" MAXIMUM, TO INCLUDE ANCHOR BOLTS.



CABLE SUPPORT GRIP

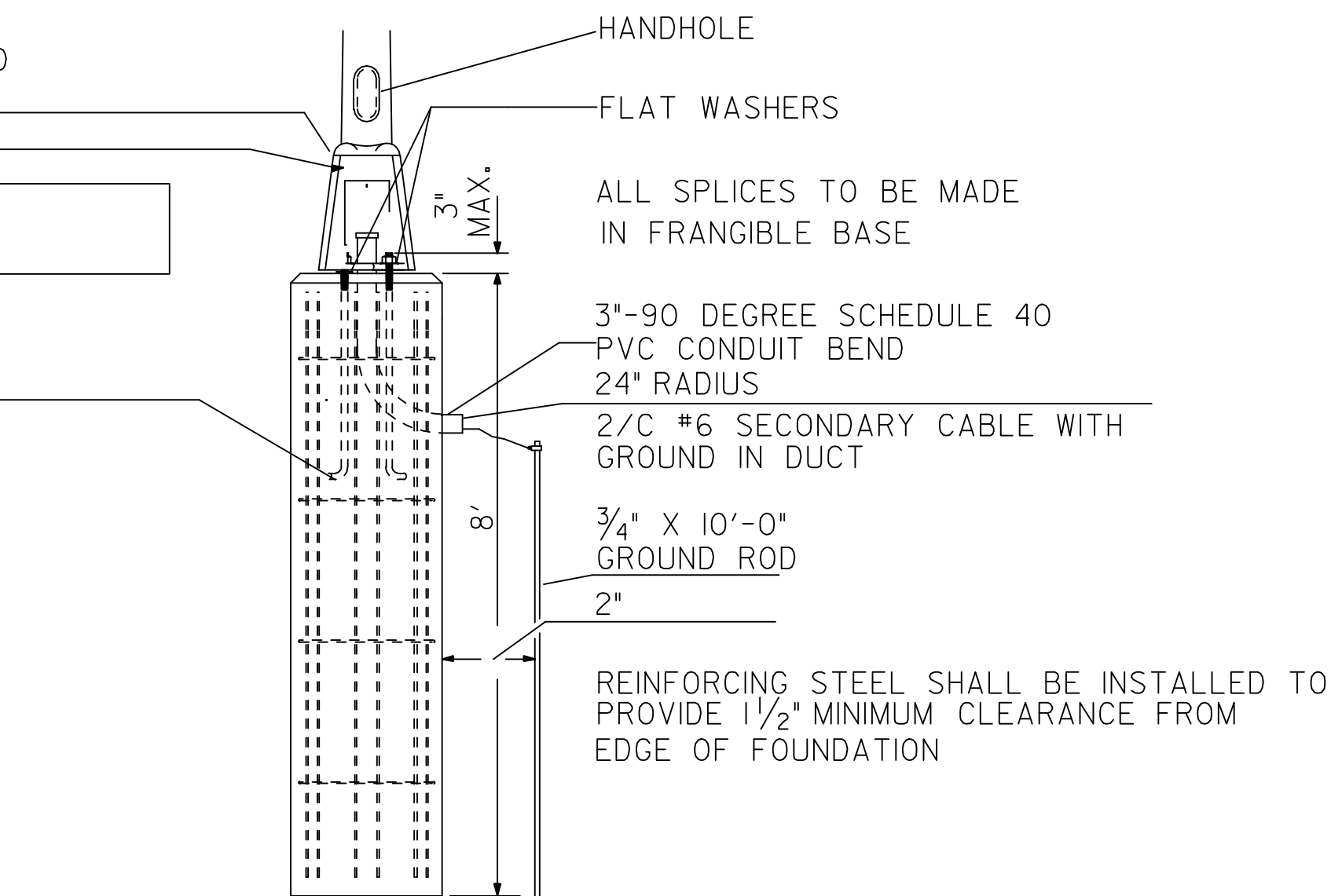
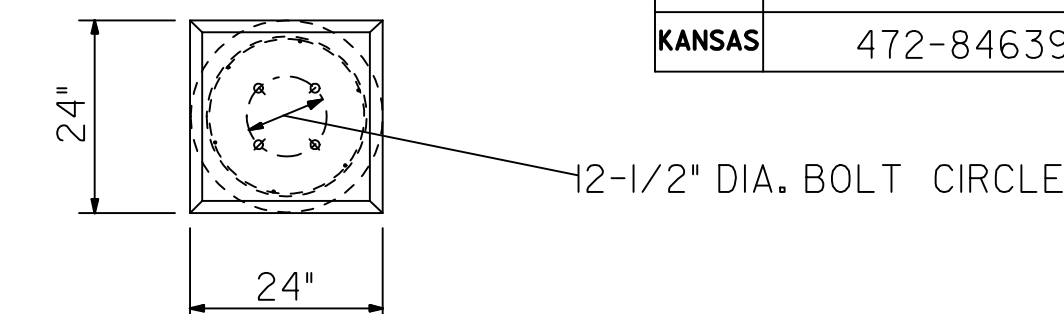
NOTE:
THE CABLE SUPPORT GRIP SHALL BE INSTALLED ON THE HOOK SUPPLIED WITHIN THE LIGHT POLE AS SHOWN ABOVE.

RUBBER SEALANT IS REQUIRED FOR TOP OF FRANGIBLE BASE

FRANGIBLE BASE
A MIN. OF 6" TO BE FORMED 24" X 24" AT TOP OF BASE

4-1" X 40" ANCHOR BOLTS

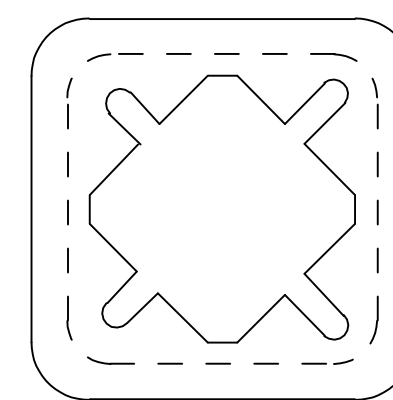
TOP VIEW FOUNDATION



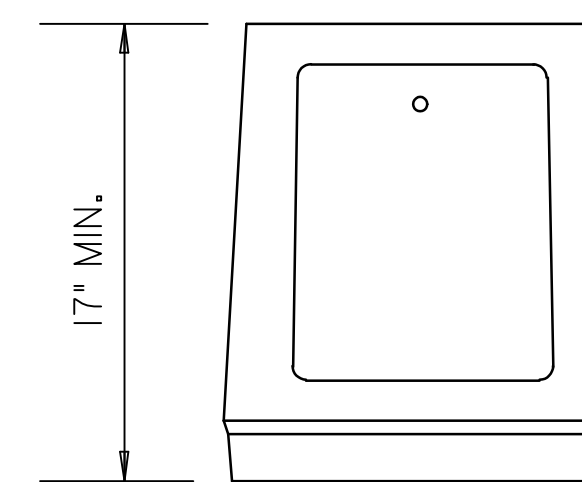
FOUNDATION DETAIL

SCREW-IN BASE

NOTE: DUE TO SOIL CONDITIONS IN ALL OR PART OF THE FOLLOWING COUNTIES, SCREW-IN LIGHT POLE FOUNDATIONS MAY ONLY BE USED FOR ROADWAY LIGHTING UPON APPROVAL BY THE KANSAS DEPARTMENT OF TRANSPORTATION BUREAU OF TRAFFIC ENGINEERING: BOURBON, CRAWFORD, CHEROKEE, LABETTE, MEADE, CLARK, COMANCHE, KIOWA, BARBER, HARPER, AND KINGMAN. ALSO EXCLUSION OF INSTALLATION IN DISTRICT ONE.

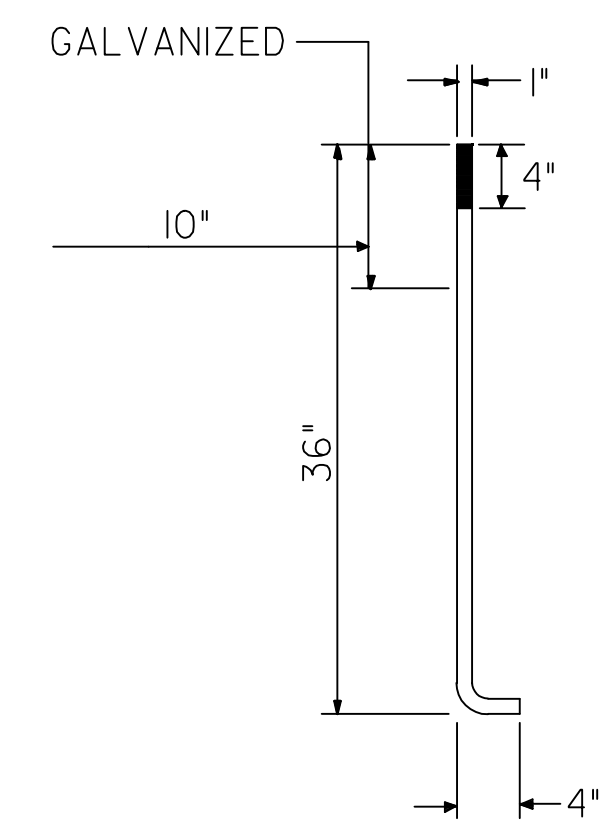


TOP AND BOTTOM VIEW

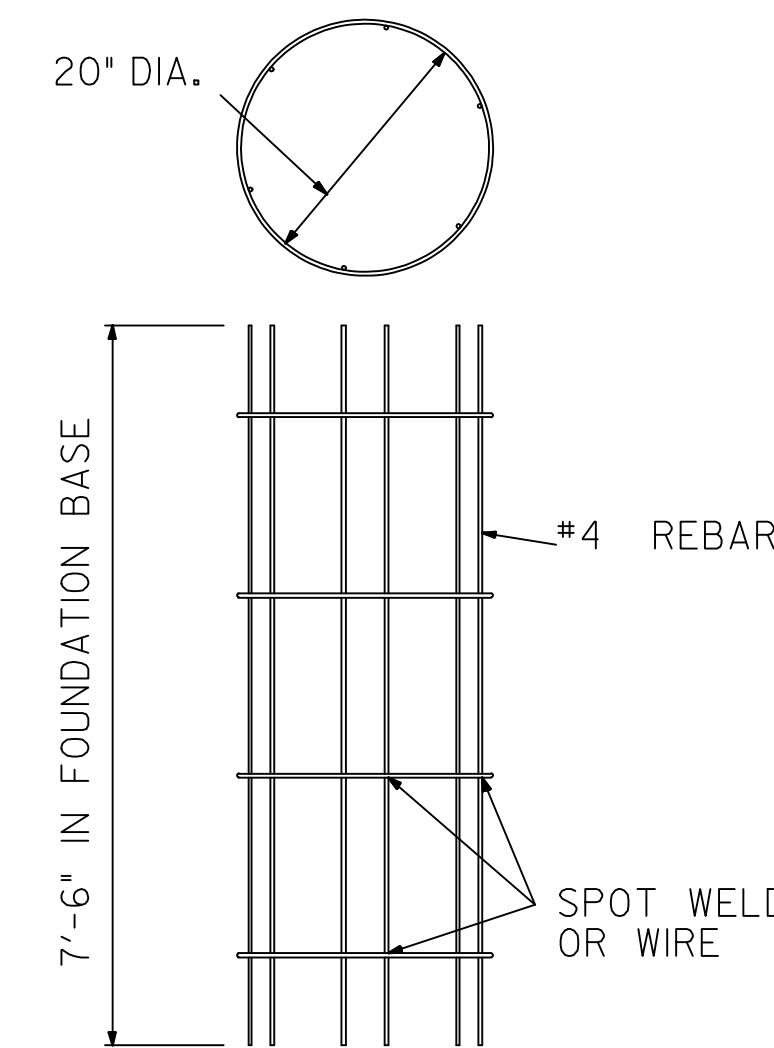


SIDE VIEW FRANGIBLE BASE

NOTE:
THE FRANGIBLE BASE MUST ACCOMMODATE 12-1/2" TOP AND BOTTOM BOLT CIRCLE.



ANCHOR BOLT DETAIL



REBAR DETAIL

3					
2					
1	02/15/06	Exclusion of Screw-in Foundations in District One	vvh	JF	
NO.	DATE		BY	APP'D	

KANSAS DEPARTMENT OF TRANSPORTATION
ROADWAY LIGHTING DETAILS

TE201					
FHWA APPROVAL		08/06/03		APP'D LINDA G. VOSS	
DESIGNED vvh	DETAILED vvh	QUANTITIES	TRACED		
DESIGN CK. CAL	DETAIL CK. CAL	QUAN. CK.	TRACE CK.		

Plotted By : drp
Plot File : I:\2006\06655\COPYIES to CUT\elec60-1e201.dgn
Plot Date : 1/17/2008