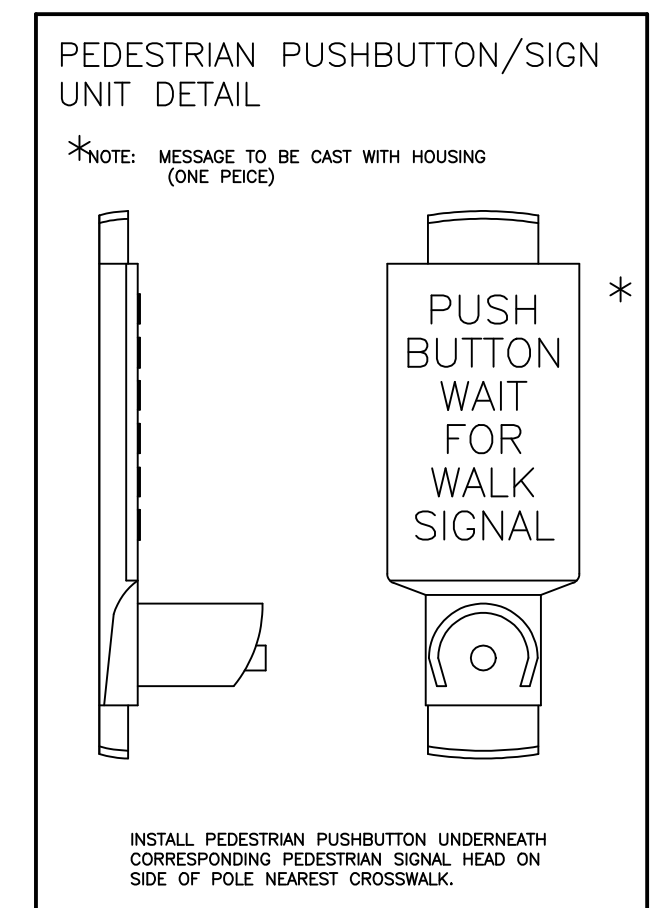
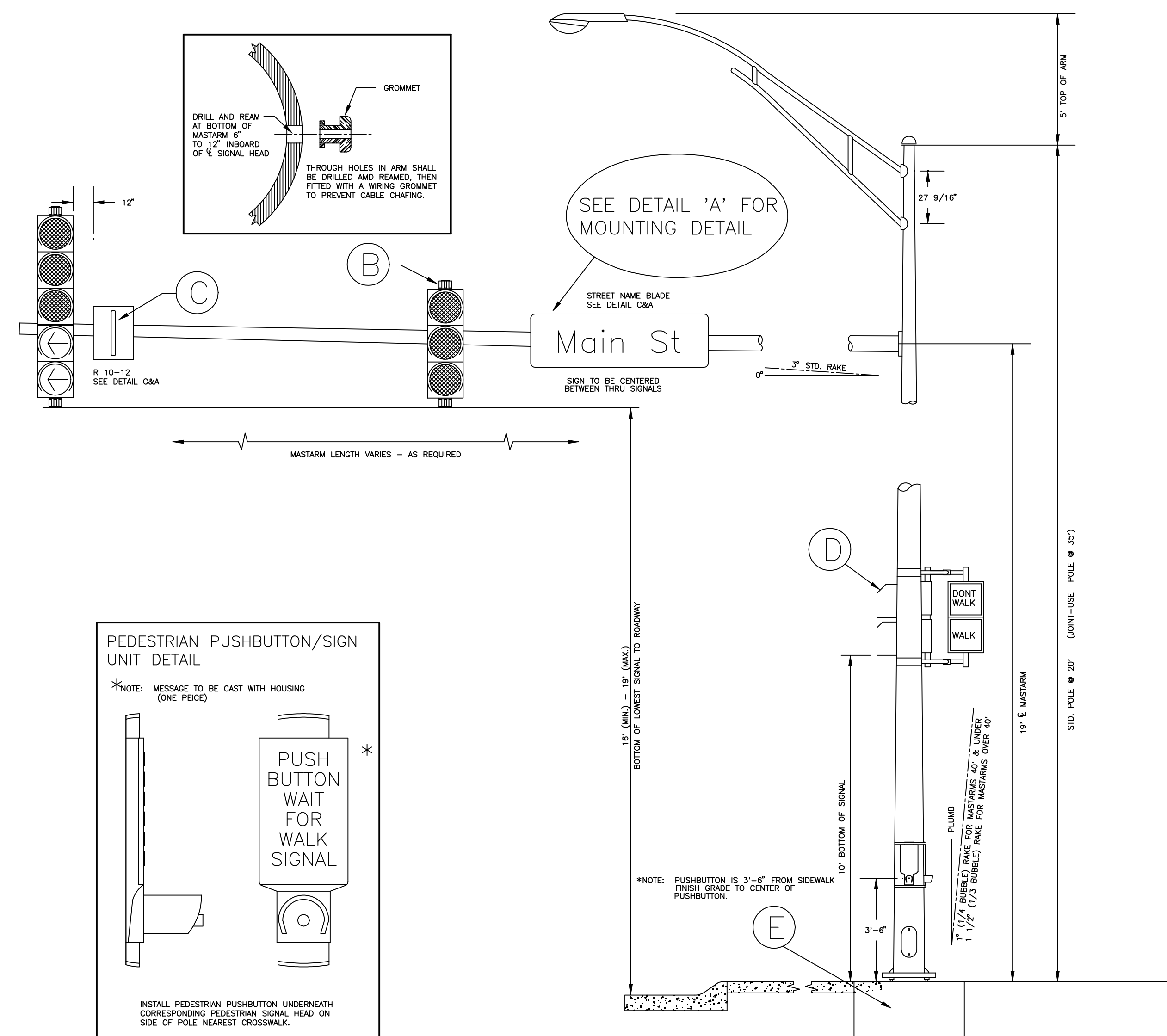
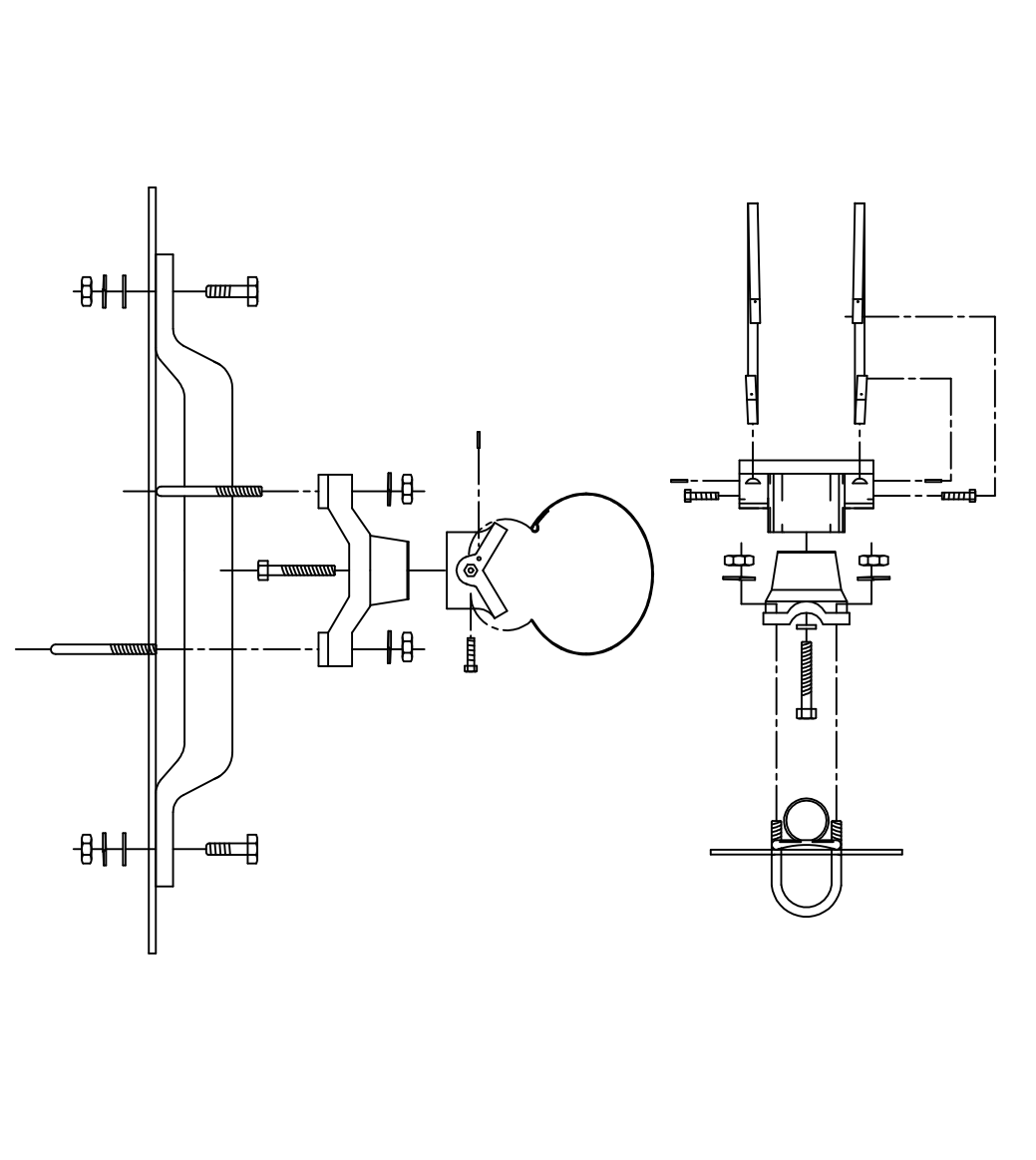


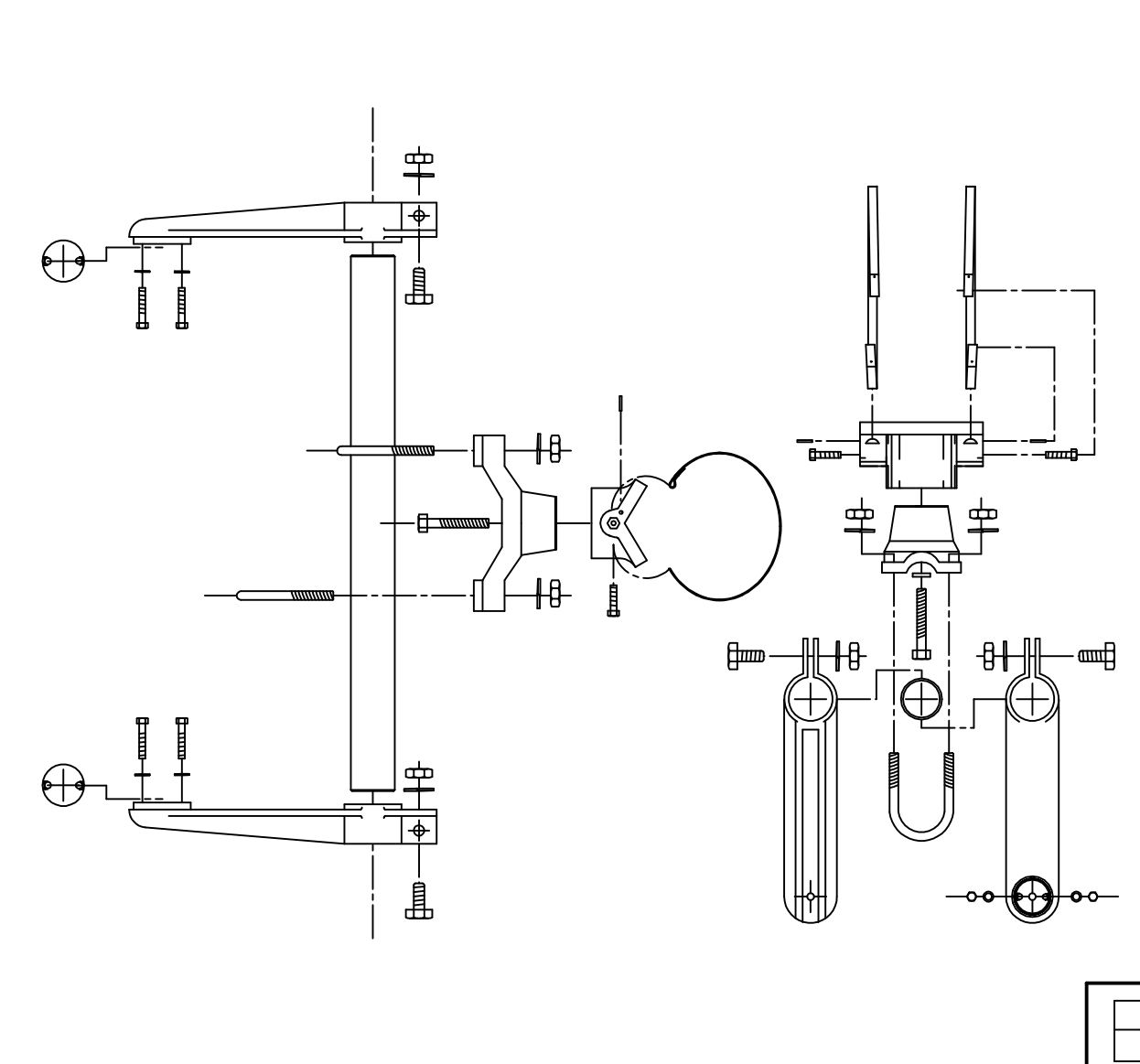
i: /2006/06655/Standards/06655-sigpol-e.dgn  
 .date plotted: 10-25-2007 drp  
 .deliver to:



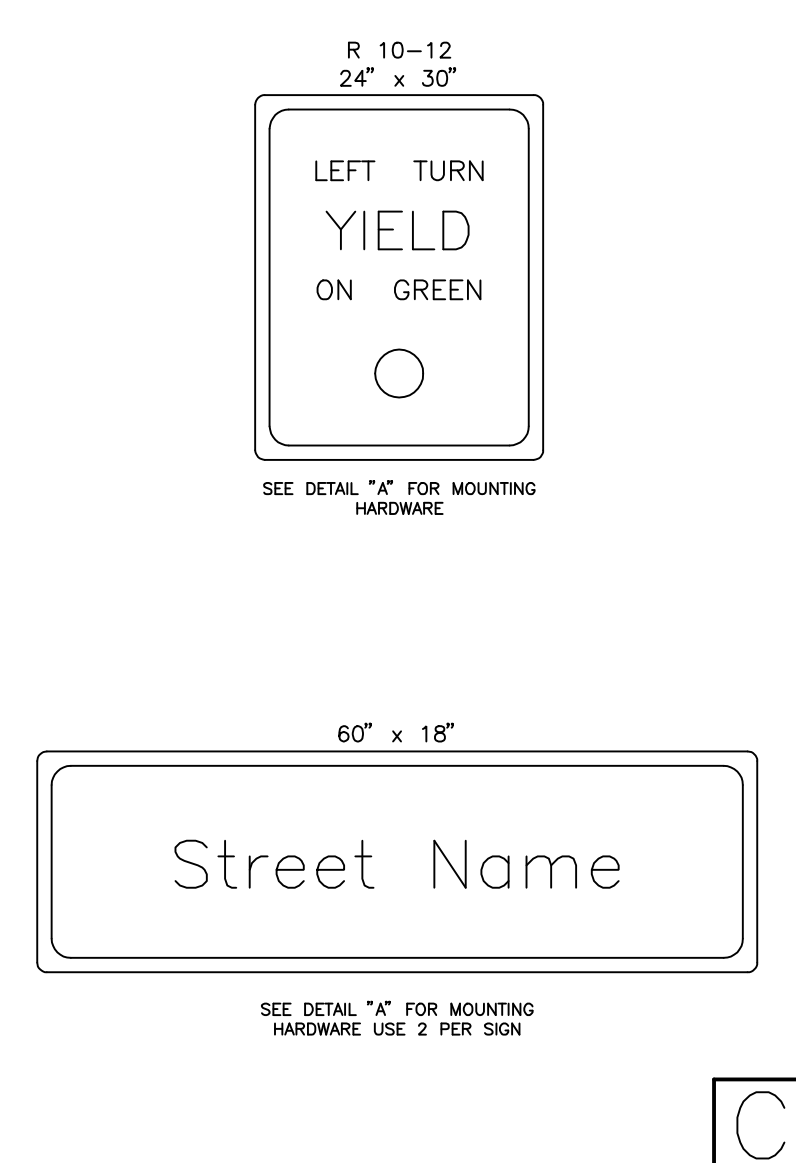
**BANDED SIGN MOUNTING BRACKET DETAIL**



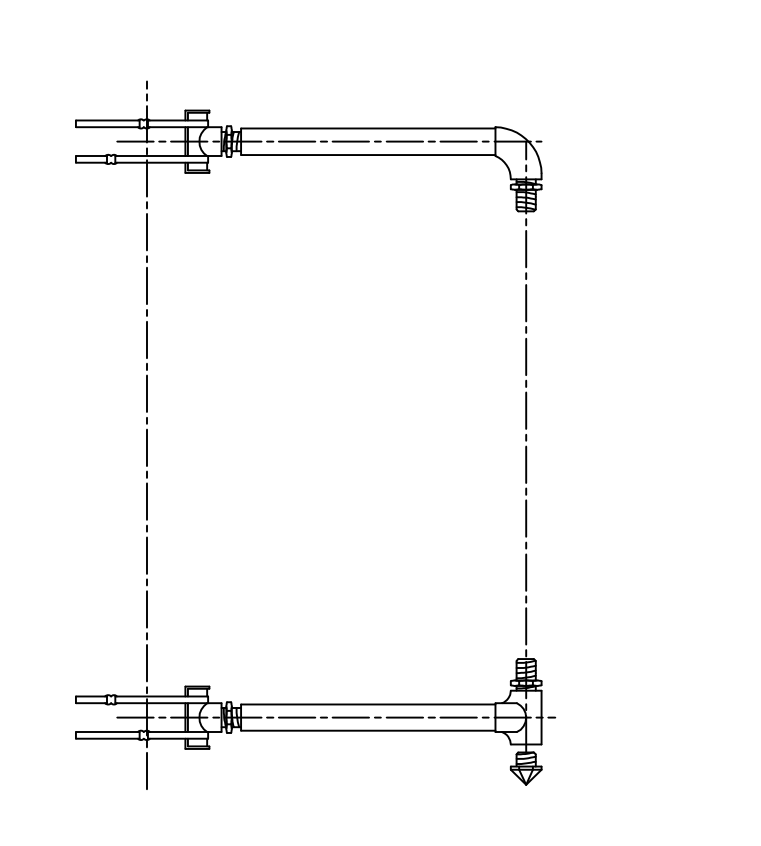
**TYPE I SIGNAL MOUNTING BRACKET ASSEMBLY DETAIL**



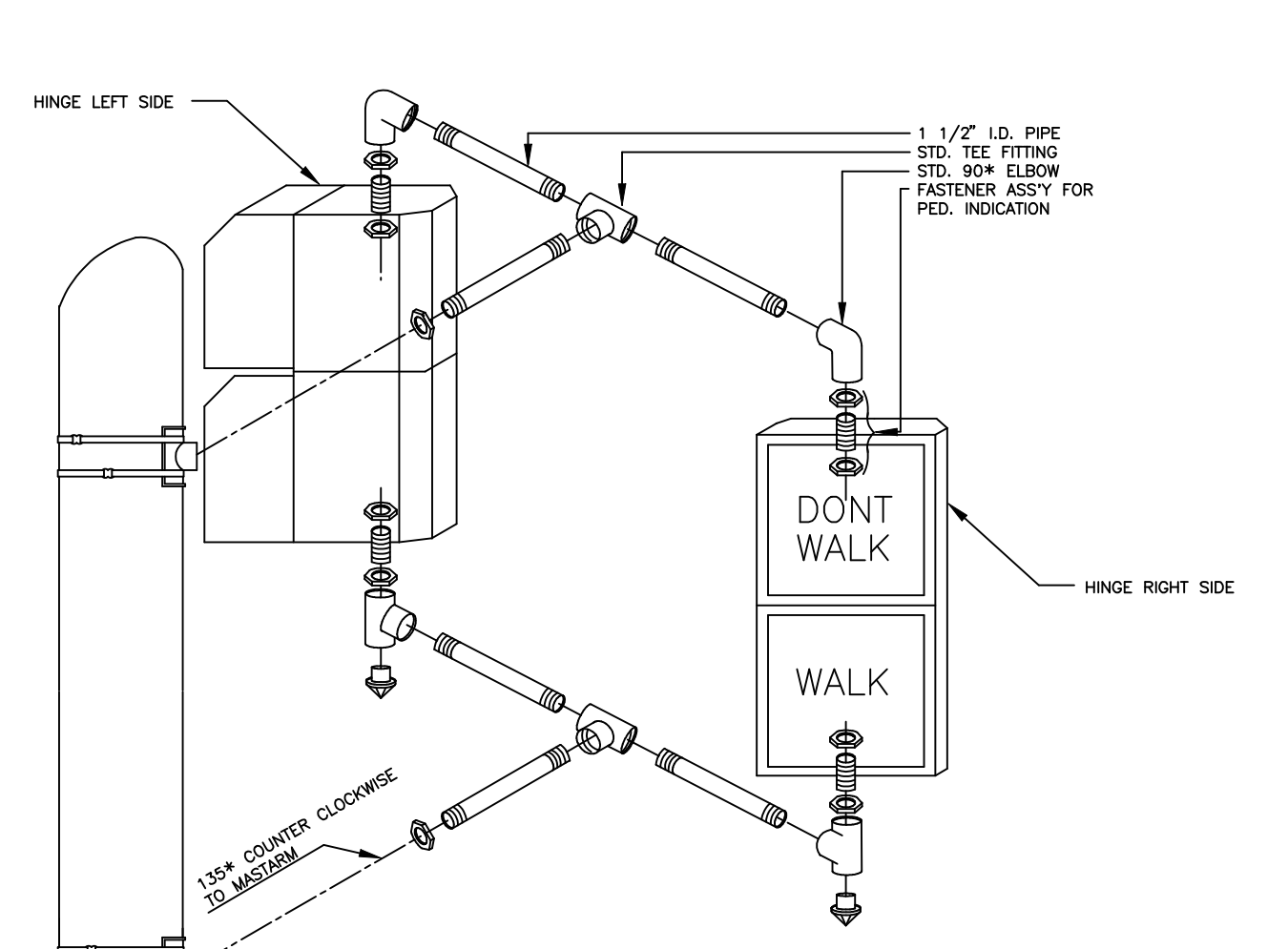
**STANDARD SIGNING**



**TYPE III SIDE-OF-POLE MOUNTING BRACKET ASSEMBLY**

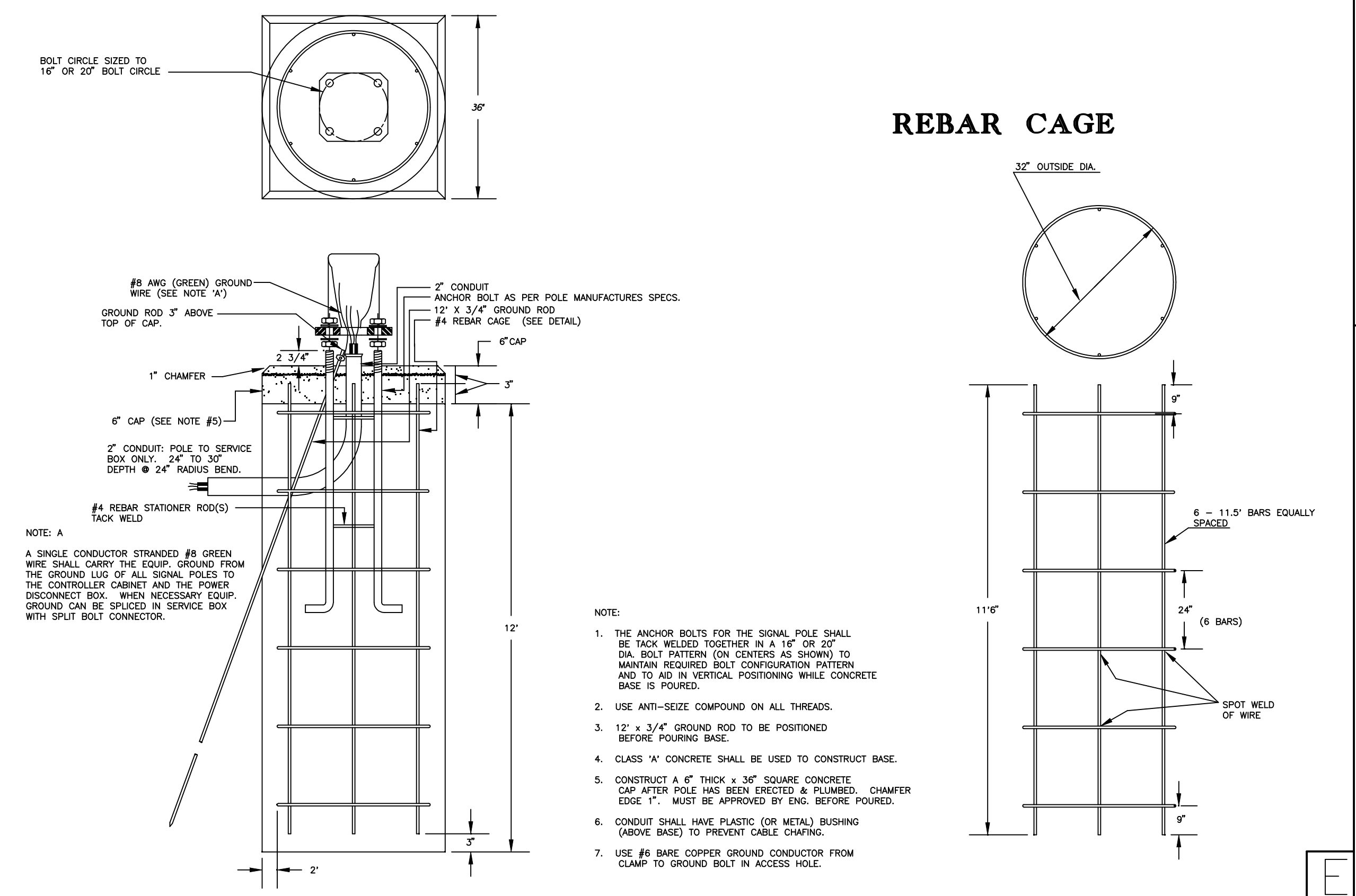


**TYPE II SIGNAL MOUNTING BRACKET ASSEMBLY (SIDE-OF-POLE)**



1. DIRECTIONAL ALIGNMENT OF PED. INDICATIONS & BRACKET(S) SHALL BE DETERMINED IN THE FIELD BY THE ENGINEER.
2. THROUGH HOLES IN THE POLE SHALL BE DRILLED AND WELL REAMED TO PREVENT CABLE CHAFING.
3. HINGE PEDESTRIAN SIGNAL DOORS AWAY FROM POLE.

**REBAR CAGE**



PROJECT DESCRIPTION		
<b>STEEL SIGNAL POLE ASSEMBLY DETAILS</b>		
PROJECT NUMBER		
472-84639		
DRAWN BY: T.M.	SCALE	REVISED BY:
DATE: MAY 97	NO SCALE	DATE:
CITY OF WICHITA DEPARTMENT OF PUBLIC WORKS		
DIVISION OF TRAFFIC ENGINEERING		SHEET 67 OF 142
WM. G. MCKINLEY P.E. TRAFFIC ENGINEER		