

TEMPORARY SIGNAL GENERAL NOTES

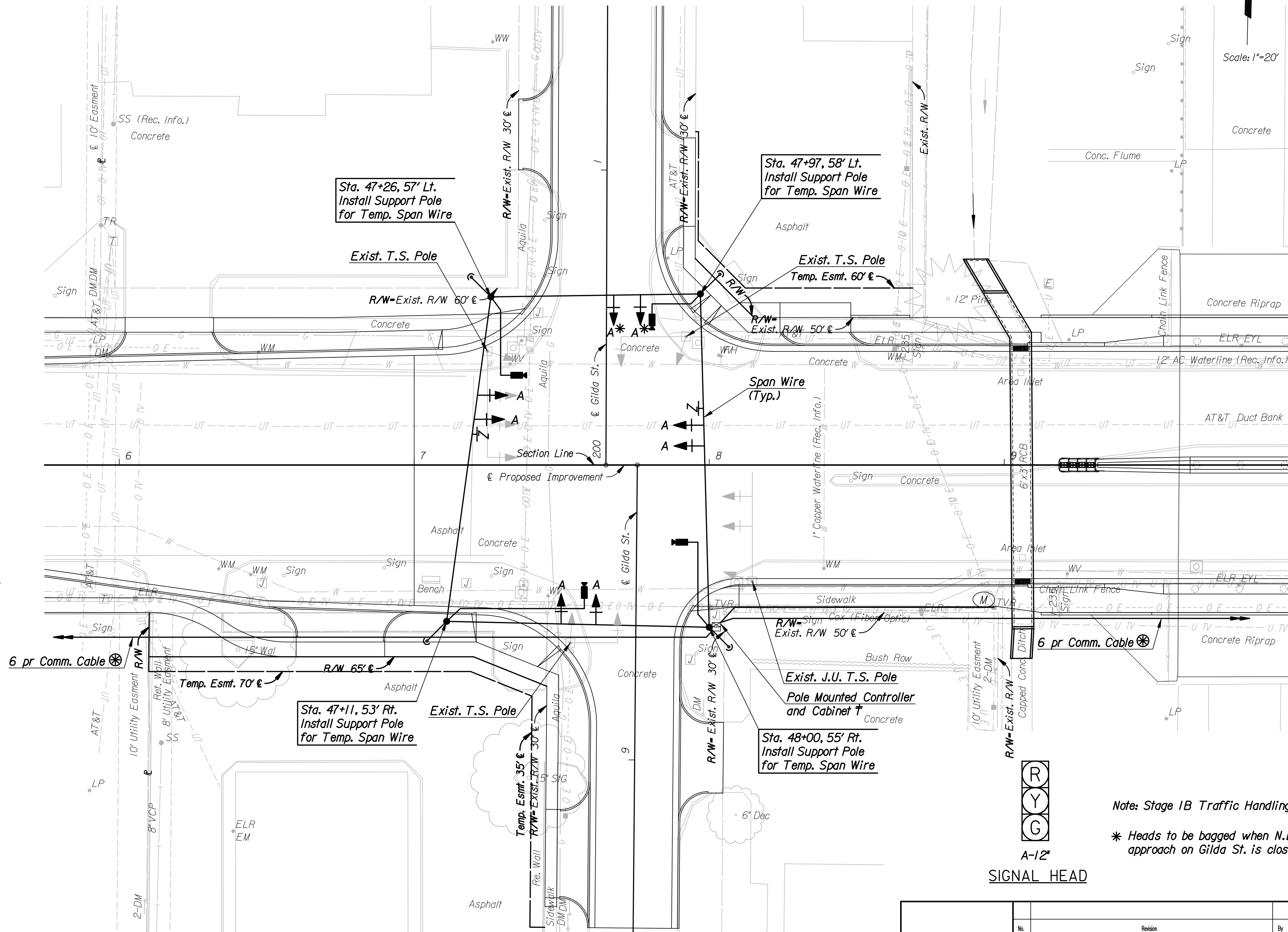
- The Contractor is to provide and maintain a temporary traffic signal at the intersection of Central Ave. and Gilda St. during construction. During stages when existing or proposed signal head supports cannot be used for temporary supports, signal heads shall be mounted from span wires and/or temporary poles as shown on the plan.
- All wiring installed shall conform to the National Electrical Code as well as local ordinances and requirements.
- All signal cable and feeder runs to be carried overhead on span wire across roadways or in conduit under the roadways.
- The operation and maintenance of the signal systems shall be the responsibility of the contractor.
- All signal indications, clearances, and sequences shall be in accordance with the current M.U.T.C.D.. Signal head location with respect to stop line location shall be in accordance with M.U.T.C.D..
- The traffic signal heads shall be adjusted on the span wire for each stage of traffic handling such that the appropriate signal head shall be in line with the appropriate lane. The contractor shall provide enough control wire such that no wire splices will be required during any stage.
- The Lump Sum price bid for "Temporary Traffic Signal Installation" shall be full compensation for all work, materials, tools, equipment and incidentals necessary to install, modify, maintain and remove the temporary signal during construction.
- The temporary traffic signals shall be switched on during an off-peak hour. When switching signals, flaggers will be required. Traffic signal "turn on" shall be coordinated with local law enforcement.
- The terminal blocks shall be in a weatherproof enclosure.
- The contractor shall supply and install all necessary materials and equipment, including signal heads, poles, wiring, video detection equipment, controller, and all other miscellaneous items, for the complete installation and operation of the traffic signal system whether specifically mentioned or not.
- Traffic signal heads which are in place and not in use during a specific stage shall be removed, or covered with an opaque material.
- Signal phasing, timing and video detection zones shall be as directed and approved by the Engineer. The Contractor shall coordinate all work that affects the existing, temporary and final signals with Paul Gunzelman, P.E. at City of Wichita (316) 268-4393.
- The traffic signal controller supplied shall be a fully actuated, 8-phase NEMA controller capable of storing a minimum of three separate phasing/timing plans which can be selected on a time of day basis.
- In case of signal malfunction, the contractor must respond within one hour.
- Support Pole locations may have to be adjusted in the field to clear existing utilities and proposed improvements. The information shown on the drawings concerning type and location of utilities is not guaranteed to be accurate or all inclusive. The Contractor is responsible for making his own verification as to the type and location of utilities to avoid damage thereto. The Contractor is responsible for costs of repairing damaged utilities.

LEGEND

- Traffic Signal Head with Backplate
- Traffic Signal Camera
- R3-2 (No Left Turn Sign)
- Pole Mounted Controller and Cabinet
- Meter and Enclosure
- Temporary Traffic Signal Pole and Deadman

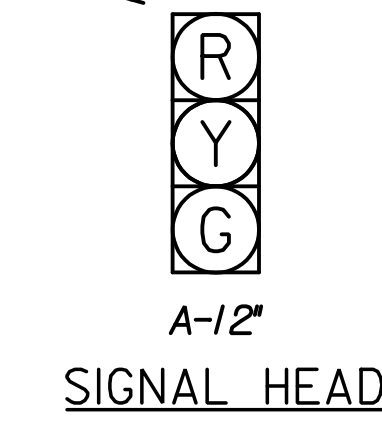
† Coordinate Power Supply and Meter location with Westar Energy.

⊗ Communication cable to interconnect Eisenhower, Gilda and I-235 Ramp Signals.



Note: Stage 1B Traffic Handling shown.

* Heads to be bagged when N.Bd. approach on Gilda St. is closed.



DSNR: WDH OPER: DRP SCALE: 1"=20' I:/2006/06655/SIGNAL/06655-SIGGILDTEMP.DGN LAST REV: 12-10-2007 BY: drp

No.	Revision	By	Date
	CENTRAL AVENUE		
TEMPORARY TRAFFIC SIGNAL PLAN CENTRAL AVE./GILDA/I-235 S. BD.			
JAMES L. ARMOUR, P.E.-CITY ENGINEER CITY OF WICHITA PROJECT NO. 472-84639			
Professional Engineering Consultants, P.A. 303 S. TOPEKA • WICHITA, KANSAS 67202 316-262-2691 • FAX 316-262-3003			
Designed by	BER	Job No.	06655
Drawn by	DRP	Date	Jan. 2008
			Sht. 70 of 142