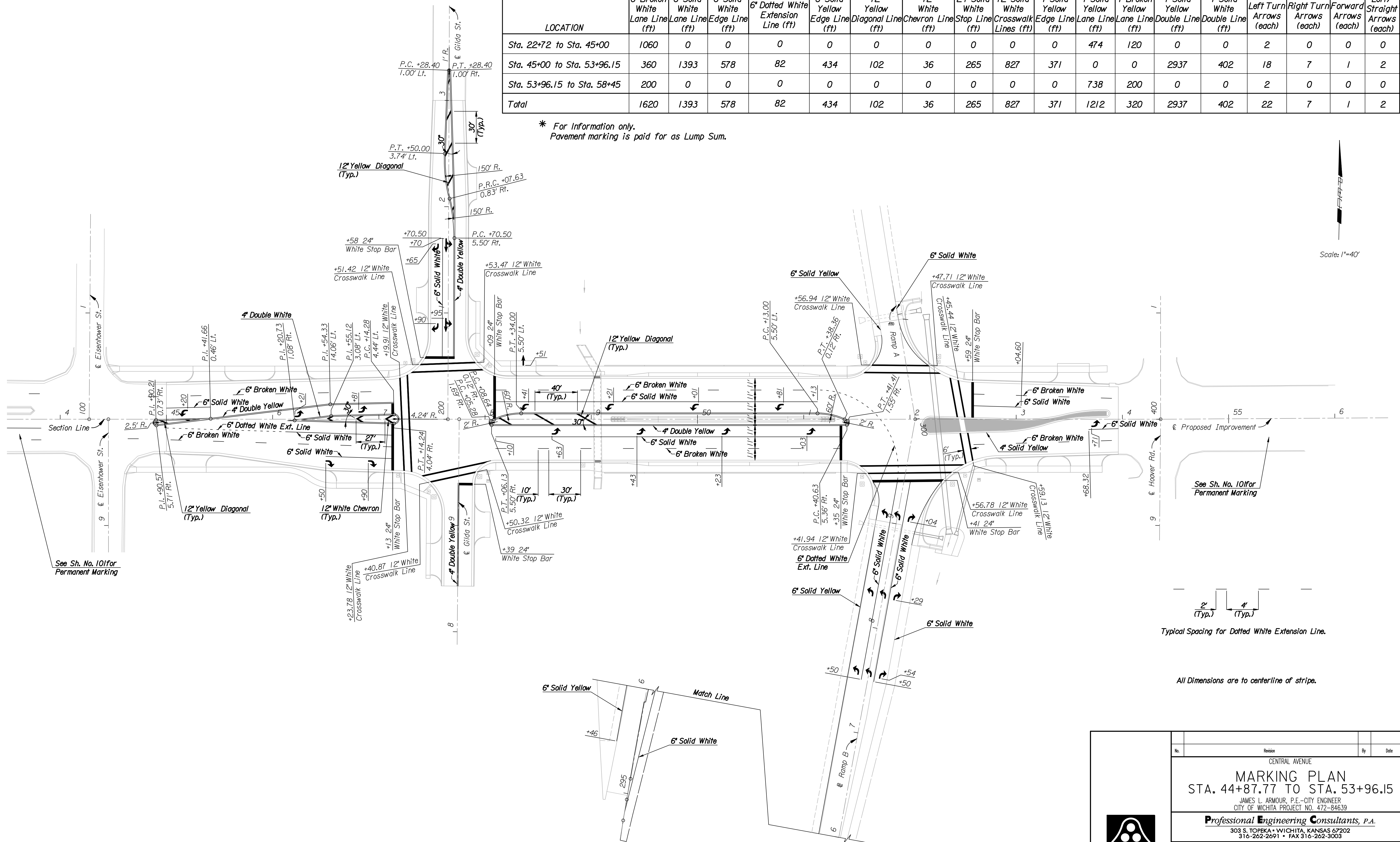
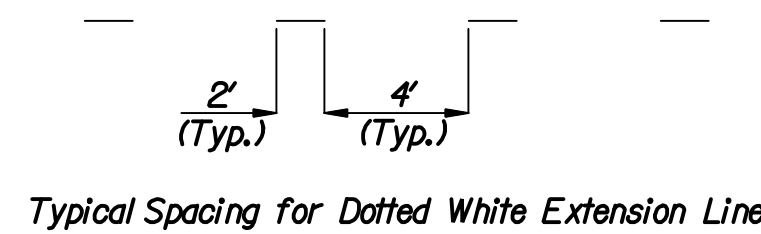


SUMMARY OF PAVEMENT MARKINGS *																		
LOCATION	6" Broken White Lane Line (ft)	6" Solid White Lane Line (ft)	6" Solid White Edge Line (ft)	6" Dotted White Extension Line (ft)	6" Solid Yellow Edge Line (ft)	12" Yellow Diagonal Line (ft)	12" White Chevron Line (ft)	24" Solid White Stop Line (ft)	12" Solid White Crosswalk Lines (ft)	4" Solid Yellow Edge Line (ft)	4" Solid Yellow Lane Line (ft)	4" Broken Yellow Lane Line (ft)	4" Solid Yellow Double Line (ft)	4" Solid White Double Line (ft)	Left Turn Arrows (each)	Right Turn Arrows (each)	Forward Arrows (each)	Left/Straight Arrows (each)
Sta. 22+72 to Sta. 45+00	1060	0	0	0	0	0	0	0	0	0	474	120	0	0	2	0	0	0
Sta. 45+00 to Sta. 53+96.15	360	1393	578	82	434	102	36	265	827	371	0	0	2937	402	18	7	1	2
Sta. 53+96.15 to Sta. 58+45	200	0	0	0	0	0	0	0	0	0	738	200	0	0	2	0	0	0
Total	1620	1393	578	82	434	102	36	265	827	371	1212	320	2937	402	22	7	1	2

* For Information only.
Pavement marking is paid for as Lump Sum.



See Sh. No. 101 for Permanent Marking



All Dimensions are to centerline of stripes.

DSNR: PMJ OPER: AKL SCALE: 1" = 40'
I:/2006/06655/Signing_Markings/06655-Mrk1.dgn LAST REV: 1-7-2008 BY: drp

No.	Revision	By	Date
CENTRAL AVENUE			
MARKING PLAN			
STA. 44+87.77 TO STA. 53+96.15			
JAMES L. ARMOUR, P.E. - CITY ENGINEER CITY OF WICHITA PROJECT NO. 472-84639			
Professional Engineering Consultants, P.A.			
303 S. TOPEKA • WICHITA, KANSAS 67202 316-262-2691 • FAX 316-262-3003			
Designed by	PMJ	Job No.	06655
Drawn by	DRP/AKL	Date	Jan. 2008
			Sht. 100 of 142