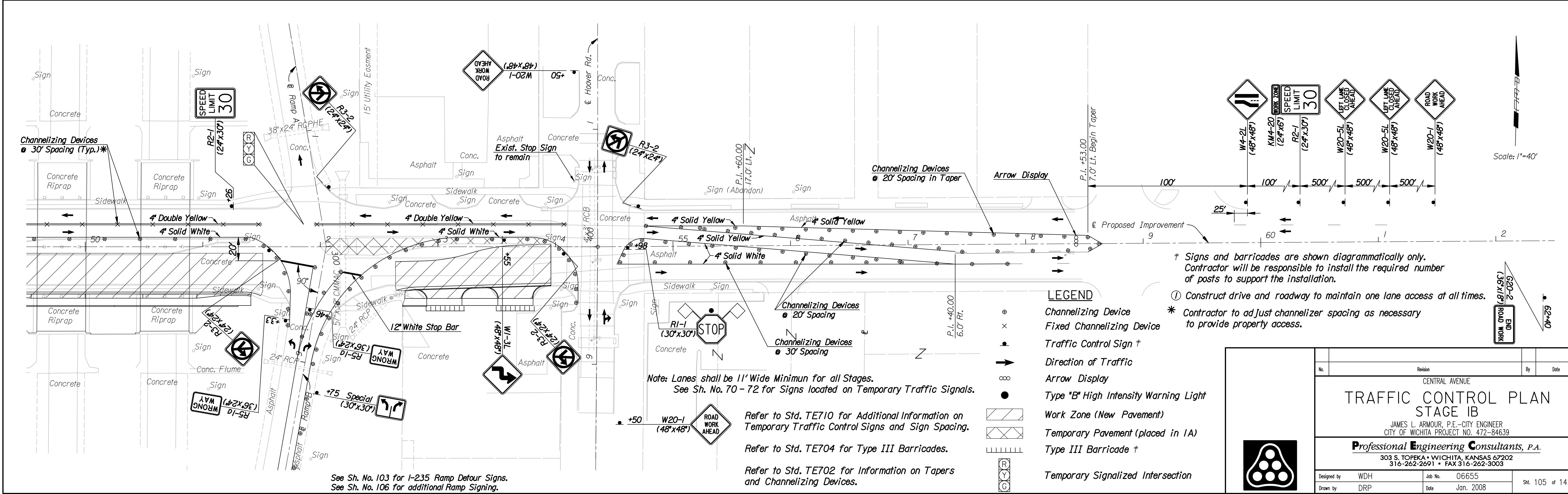
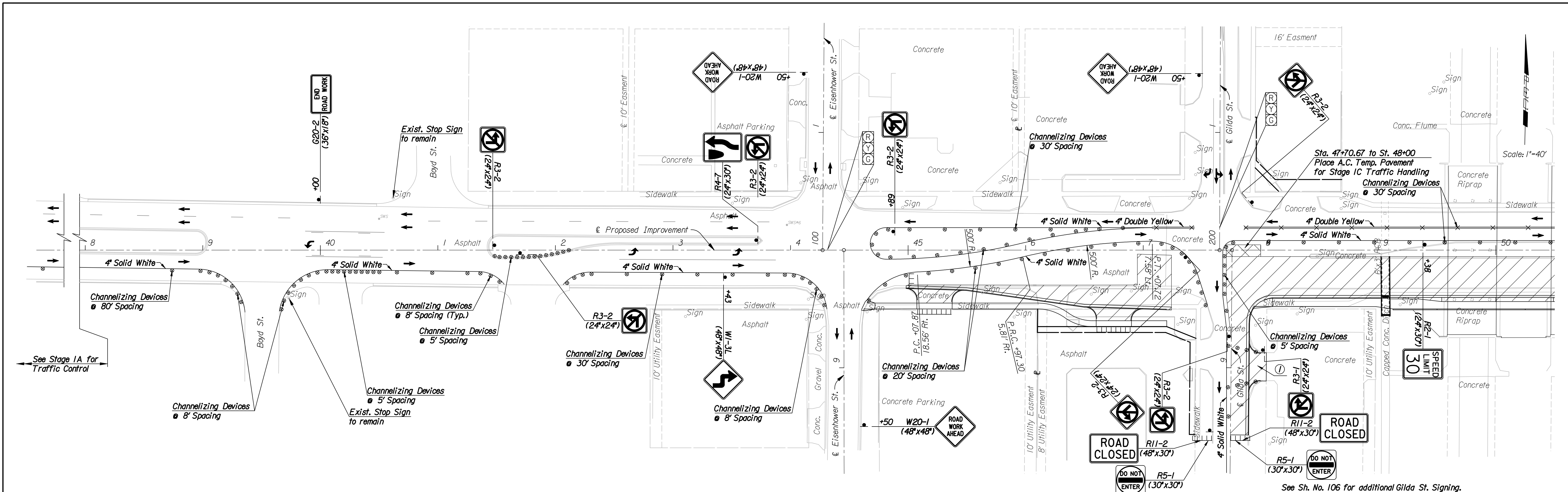


DSNR: WDH OPER: DRP SCALE: 1"=40' 1-9-2008 BY: drp



- LEGEND**
- Channelizing Device
  - × Fixed Channelizing Device
  - † Traffic Control Sign †
  - Direction of Traffic
  - ∞ Arrow Display
  - Type "B" High Intensity Warning Light
  - ▨ Work Zone (New Pavement)
  - ▧ Temporary Pavement (placed in IA)
  - ⊞ Type III Barricade †
  - Ⓞ Temporary Signalized Intersection

† Signs and barricades are shown diagrammatically only. Contractor will be responsible to install the required number of posts to support the installation.

Ⓞ Construct drive and roadway to maintain one lane access at all times.

\* Contractor to adjust channelizer spacing as necessary to provide property access.

Note: Lanes shall be 11' Wide Minimum for all Stages.  
See Sh. No. 70 - 72 for Signs located on Temporary Traffic Signals.

Refer to Std. TE710 for Additional Information on Temporary Traffic Control Signs and Sign Spacing.

Refer to Std. TE704 for Type III Barricades.

Refer to Std. TE702 for Information on Tapers and Channelizing Devices.

See Sh. No. 103 for I-235 Ramp Detour Signs.  
See Sh. No. 106 for additional Ramp Signing.

No.	Revision	By	Date
CENTRAL AVENUE			
<b>TRAFFIC CONTROL PLAN</b>			
<b>STAGE IB</b>			
JAMES L. ARMOUR, P.E.—CITY ENGINEER CITY OF WICHITA PROJECT NO. 472-84639			
<b>Professional Engineering Consultants, P.A.</b>			
303 S. TOPKA • WICHITA, KANSAS 67202 316-262-2691 • FAX 316-262-3003			
Designed by	WDH	Job No.	06655
Drawn by	DRP	Date	Jan. 2008
			Sht. 105 of 142