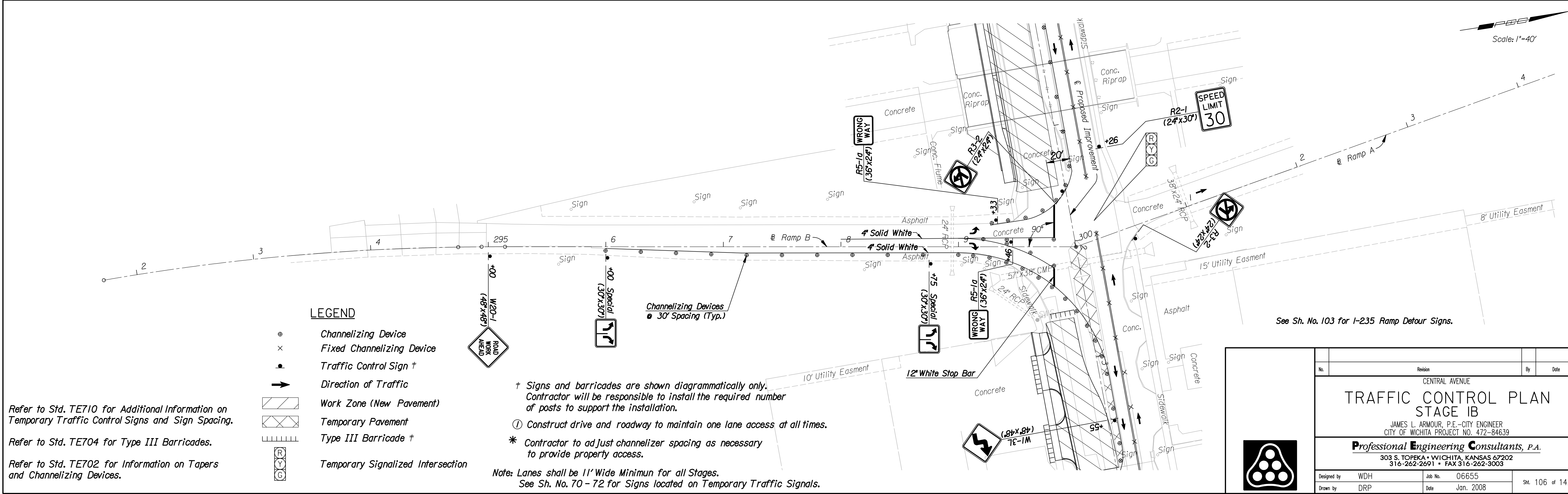
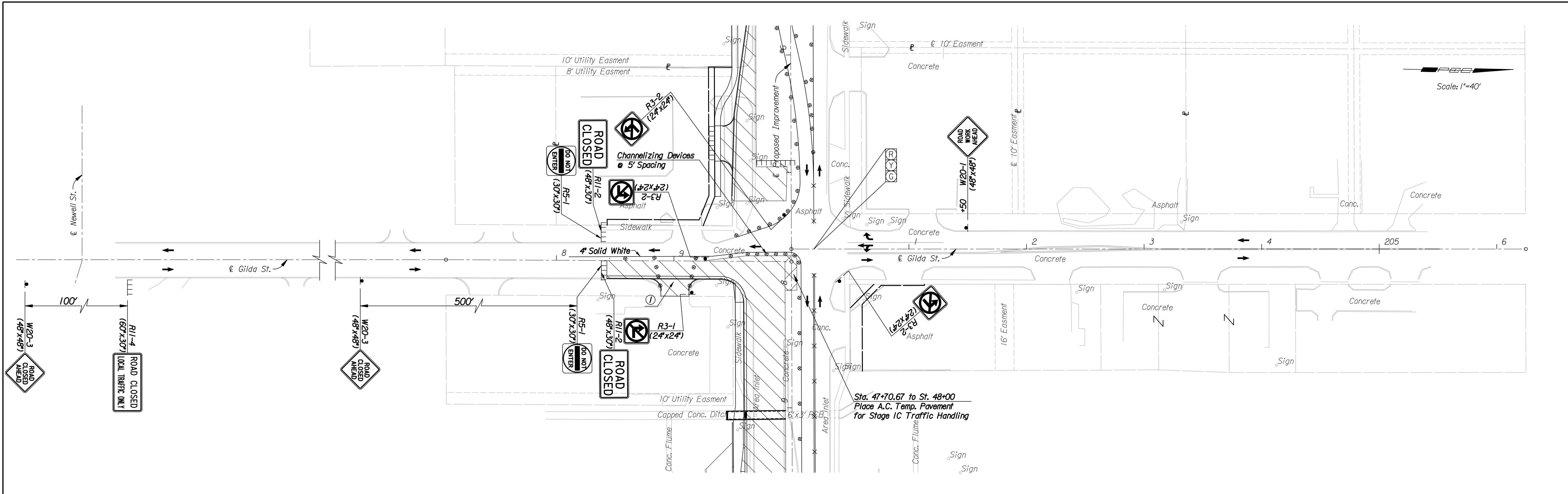


DSNR: WDH OPER: DRP SCALE: 1"=40'
 I:/2006/06655/TRAFFIC/06655-000-STAGE1B-SR.DGN LAST REV: 1-9-2008 BY: drp



LEGEND

- ⊙ Channelizing Device
- × Fixed Channelizing Device
- Traffic Control Sign †
- ➔ Direction of Traffic
- ▨ Work Zone (New Pavement)
- ▩ Temporary Pavement
- ▬ Type III Barricade †
- Ⓜ Temporary Signalized Intersection

† Signs and barricades are shown diagrammatically only. Contractor will be responsible to install the required number of posts to support the installation.

Ⓜ Construct drive and roadway to maintain one lane access at all times.

* Contractor to adjust channelizer spacing as necessary to provide property access.

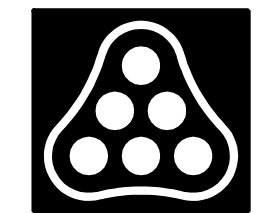
Note: Lanes shall be 11' Wide Minimum for all Stages.
 See Sh. No. 70 - 72 for Signs located on Temporary Traffic Signals.

Refer to Std. TE710 for Additional Information on Temporary Traffic Control Signs and Sign Spacing.

Refer to Std. TE704 for Type III Barricades.

Refer to Std. TE702 for Information on Tapers and Channelizing Devices.

See Sh. No. 103 for I-235 Ramp Detour Signs.



No.	Revision	By	Date
CENTRAL AVENUE			
TRAFFIC CONTROL PLAN			
STAGE 1B			
JAMES L. ARMOUR, P.E.—CITY ENGINEER CITY OF WICHITA PROJECT NO. 472-84639			
Professional Engineering Consultants, P.A. 303 S. TOPEKA • WICHITA, KANSAS 67202 316-262-2691 • FAX 316-262-3003			
Designed by	WDH	Job No.	06655
Drawn by	DRP	Date	Jan. 2008
			Sht. 106 of 142