

GENERAL NOTES

ALL ELEVATIONS SHOWN ARE BASED ON MEAN SEA LEVEL DATUM.

1. CONTRACTOR WILL BE REQUIRED TO PROVIDE A MINIMUM ADVANCE NOTICE OF SEVENTY-TWO (72) HOURS (EXCLUDING WEEKENDS AND HOLIDAYS) TO UTILITY COMPANIES PRIOR TO STARTING ANY EXCAVATION AS FOLLOWS:

KANSAS ONE CALL 1-800-344-7233 OR 687-2470 (LOCAL WICHITA)

THE CONTRACTOR MUST NOTIFY THE FOLLOWING IN CASE OF AN EMERGENCY:

COX COMMUNICATIONS 316-262-0661
 AT&T 1-800-870-8390
 KANSAS GAS SERVICE 1-800-482-4950
 WESTAR ENERGY 316-383-8600
 CITY OF WICHITA WATER & SEWER DEPARTMENT 316-268-4555

THE CONTRACTOR SHALL NOTIFY PIPELINE COMPANIES AT LEAST 24 HOURS IN ADVANCE OF ANY WORK BEING PERFORMED ACROSS AND/OR ADJACENT TO PIPELINES.

2. INTERURBAN TRAFFIC GENERATED OUTSIDE THE PROJECT AREA IS NOT TO BE CARRIED THROUGH CONSTRUCTION. LOCAL RESIDENTIAL TRAFFIC GENERATED WITHIN THE PROJECT AREA IS TO BE CARRIED THROUGH CONSTRUCTION AS FURTHER PROMULGATED BY PROJECT SPECIAL PROVISIONS.

3. UTILITY SERVICE LINES, POLES, VALVE BOXES, METERS, ECT. ARE TO BE ADJUSTED AS NECESSARY BY OTHERS PRIOR TO CONSTRUCTION UNLESS THE PLANS SPECIFICALLY CALL FOR THEIR ADJUSTMENT BY THE CONTRACTOR OR UNLESS THE PLANS SPECIFICALLY IDENTIFY A UTILITY TO BE ADJUSTED BY ITS OWNER DURING CONSTRUCTION. EXISTING UTILITIES AND THEIR LOCATION, AS SHOWN ON THE PLANS, REPRESENT THE BEST INFORMATION OBTAINABLE FOR DESIGN. THE PLAN LOCATIONS ARE NOT GUARANTEED AND ADDITIONAL UTILITIES MAY ALSO BE ENCOUNTERED. THE CONTRACTOR WILL BE REQUIRED TO WORK AROUND EXISTING UTILITIES WITHIN THE RIGHT-OF-WAY WHICH DO NOT CONFLICT WITH PROPOSED CONSTRUCTION.

4. RUBBLE FROM THE REMOVAL OF MISCELLANEOUS STRUCTURES AND EXCESS EXCAVATION WHICH IS TO BE WASTED SHALL BE DISPOSED OF ON SITES TO BE PROVIDED BY THE CONTRACTOR. THESE SITES SHALL BE APPROVED BY THE ENGINEER AS TO SUITABILITY, APPEARANCE, AND SITE LOCATION. LOCATIONS, THAT IN THE OPINION OF THE ENGINEER, WILL LEAVE AN UNSIGHTLY APPEARANCE WILL NOT BE APPROVED. ALL DISPOSAL SITES MUST BE APPROVED BY THE KANSAS DEPARTMENT OF HEALTH AND ENVIRONMENT. MATERIAL EITHER STOCKPILED OR DISPOSED OF IN A FLOODPLAIN WOULD REQUIRE A KANSAS STATE BOARD OF AGRICULTURE PERMIT. ANY MATERIALS DUMPED IN WATERS OF THE UNITED STATE OR WETLANDS IS SUBJECT TO U.S. CORPS OF ENGINEERS PERMITTING REGULATIONS. ANY MATERIAL BURIED OR STOCKPILED BEYOND APPROVED CONSTRUCTION LIMITS WOULD REQUIRE ADDITIONAL ARCHAEOLOGICAL INVESTIGATIONS UNLESS BURIED IN A PREVIOUSLY APPROVED BORROW LOCATION.

6. TREES AND SHRUBS IN PUBLIC RIGHT-OF-WAY WHICH ARE IN DIRECT CONFLICT WITH PROPOSED NEW CONSTRUCTION SHALL BE REMOVED BY THE CONTRACTOR WITH THE ENGINEERS APPROVAL. TREES AND SHRUBS WHICH ARE NOT IN DIRECT CONFLICT WITH PROPOSED NEW CONSTRUCTION SHALL BE SAVED AND PROTECTED FROM DAMAGE.

7. THE CONTRACTOR SHALL BE RESPONSIBLE FOR PRESERVING PROPERTY IRONS. THE CONTRACTOR WILL BE REQUIRED TO REESTABLISH ANY PROPERTY IRONS WHICH ARE DAMAGED OR DESTROYED BY HIS CONSTRUCTION OPERATIONS. SUCH IRONS SHALL BE REESTABLISHED BY A LICENSED LAND SURVEYOR IN ACCORDANCE WITH STATE LAWS.

8. THE CONTRACTOR SHALL GIVE ALL PROPERTY OWNERS AND/OR TENANTS OF DEVELOPED PROPERTY DIRECTLY ADJUTING THE CONSTRUCTION OF THIS PROJECT A MINIMUM OF TEN(10) DAYS ADVANCE NOTICE PRIOR TO START OF CONSTRUCTION.

9. THE CONTRACTOR SHALL ADJUST WATER VALVE BOXES, WATER METER BOXES AND FIRE HYDRANTS AS NOTED IN THE PLANS AND AS DIRECTED BY THE ENGINEER. MATERIALS, EQUIPMENT, AND LABOR REQUIRED FOR THE ADJUSTMENT OF WATER METER AND VALVE BOXES AND FIRE HYDRANTS WILL NOT BE PAID FOR DIRECTLY BUT WILL BE CONSIDERED SUBSIDIARY TO OTHER ITEMS OF WORK IN THE CONTRACT. THE WATER DEPARTMENT SHALL FIELD LOCATE WATER VALVES ONE TIME DURING CONSTRUCTION WHEN REQUESTED BY THE CONTRACTOR. IT SHALL BE THE CONTRACTORS RESPONSIBILITY TO PRESERVE SUCH FIELD LOCATIONS DURING THE CONSTRUCTION PROCESS. WATER VALVES, WATER VALVE BOXES, OR FIRE HYDRANTS DAMAGED DURING CONSTRUCTION SHALL BE REPAIRED BY THE CONTRACTOR AT HIS OWN EXPENSE.

10. THE CONTRACTOR MUST EXAMINE THE CONSTRUCTION SITE PRIOR TO BIDDING AND BE SATISFIED AS TO THE WORK SHOWN FOR COMPLETION. AFTER BIDS HAVE BEEN RECEIVED, THE CONTRACTOR SHALL NOT ASSERT THAT THERE WAS A MISUNDERSTANDING OF THE QUANTITIES OF WORK OR OF THE NATURE FOR THE WORK TO BE COMPLETED.

11. CONTRACTOR SHALL NOT START WORK ON THE PROJECT UNTIL THE PROJECT INSPECTOR IS ASSIGNED TO THE PROJECT AND IS PRESENT ON THE SITE. ANY WORK DONE WITHOUT INSPECTION WILL BE REQUIRED TO BE UNCOVERED FOR INSPECTION.

12. ALL LAWN/TURF AREAS DISTURBED BY CONSTRUCTION OF THE PROPOSED IMPROVEMENTS SHALL BE RESTORED WITH THE SAME GRASS AS EXISTING IN ACCORDANCE WITH THE CITY OF WICHITA ADMINISTRATIVE REGULATIONS NO. AR 6.5 WHICH GOVERNS CLEANUP AND RESTORATION OR REPLACEMENT FOLLOWING CONSTRUCTION. RESTORATION OF DISTURBED AREAS SHALL INCLUDE, BUT NOT LIMITED TO, TOP SOIL PREPARATION, FERTILIZING, SEEDING, MULCHING AND/OR RESEEDING. ALL HYDROSEEDING & HYDROMULCHING WORK SHALL BE INSTALLED IN ACCORDANCE WITH THE KDOT STANDARD SPECIFICATIONS UNDER SECTIONS "903-SEEDING" AND "904-MULCHING". ALL COSTS FOR THE SOIL PREPARATION, HYDROSEEDING AND HYDROMULCHING SHALL BE PAID THROUGH THE MEASURED BID ITEM FOR "PROJECT SEEDING (MULCHING-HYDRO, FGM)".

13. THE CONTRACTOR SHALL PROVIDE TRAFFIC CONTROL IN ACCORDANCE WITH THE CURRENT ADDITION OF THE MANUAL OF UNIFORM TRAFFIC CONTROL DEVICES (MUTCD) TO ENSURE A SAFE WORK ZONE FOR THE TRAVELING PUBLIC.

14. PAVEMENT REMOVAL AND/OR REPLACEMENT WILL BE MEASURED AND PAID FOR ON THE SQUARE YARD BASIS REGARDLESS OF PAVEMENT TYPE AND/OR PAVEMENT THICKNESS. MINIMUM LIMITS OF SUCH PAVEMENT REMOVAL AND REPLACEMENT SHALL BE ONE FOOT BEYOND THE LIMITS OF EXCAVATION MADE FOR THE SEWER OR THE STRUCTURE, EXCEPT WHEN SUCH LIMITS OF REMOVAL ARE WITHIN THREE(3) FEET OF AN EXISTING JOINT. REMOVAL AND REPLACEMENT OF EXISTING PAVEMENT SHALL CONFORM TO THE APPLICABLE SECTIONS OF THE CITY OF WICHITA STANDARD SPECIFICATIONS.

15. THE CONTRACTOR SHALL ADJUST SANITARY SEWER MANHOLES AND STORM SEWER MANHOLES FOR ELEVATION AND SLOPE AS REQUIRED TO FIT PROPOSED FINISH GRADES.

16. THE CONTRACTOR SHALL BE RESPONSIBLE FOR REMOVING AND REPLACING EXISTING STREET SIGNAGE AT THE BEGINNING AND ENDING OF CONSTRUCTION.

17. ALL CONSTRUCTION AND MATERIALS, UNLESS OTHERWISE NOTED, TO COMPLY WITH CITY OF WICHITA SPECIFICATIONS AND STANDARDS.

18. THE COST OF CONCRETE DRIVEWAY REMOVAL SHALL INCLUDE A SAW CUT OF A MINIMUM DEPTH OF ONE FOURTH OF THE PAVEMENT THICKNESS. THE SAW CUT SHALL BE AT THE PROPERTY LINE OR THE NEAREST JOINT. THE EXACT LOCATION SHALL BE DETERMINED BY THE FIELD ENGINEER.

DRAINAGE IMPROVEMENTS TO SERVE CESSNA PARK WEST & RESERVE ADD. WICHITA, SEDGWICK COUNTY, KANSAS

JIM ARMOUR, P.E., CITY ENGINEER
 CITY PROJECT NO. 468 84387
 O.C.A. NO. 660804
 FEBRUARY 2008

LEGEND

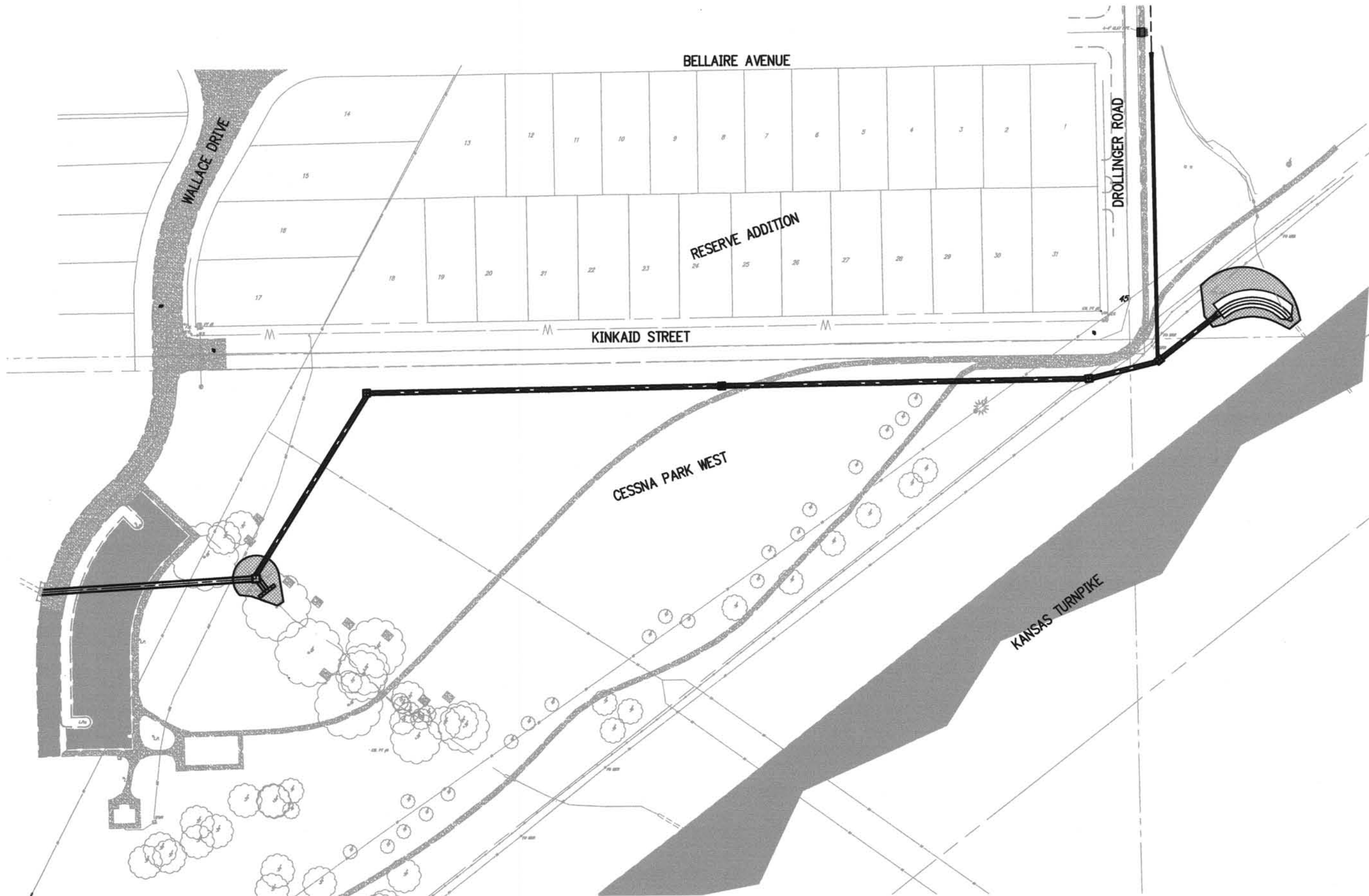
- G = GAS MAIN
- W = WATER MAIN
- SS = SANITARY SEWER
- SWS = STORM WATER SEWER
- UGE = UNDER GROUND ELECTRIC
- UGT = UNDER GROUND TELEPHONE
- B.M. _____ BENCH MARK
- C.O. _____ CLEAN OUT
- F.H. _____ FIRE HYDRANT
- FO MGR _____ FIBER OPTIC MARKER
- _____ GUY POLE
- L.P. _____ LIGHT POLE
- M.W. _____ MONITOR WELL
- _____ POWER POLE
- SIGN _____ SIGN
- W.V. _____ WATER VALVE
- XTMR _____ ELECTRIC TRANSFORMER
- SS M.H. _____ SANITARY SEWER MANHOLE

B.M. #1: Square Cut on Top of Curb
 E. Curb Return @ N.E. Corner of
 Wallace Dr. & Kinkaid St.
 Elevation = 1,308.42 NAVD 88

B.M. #2: Square Cut on Top of Curb
 W. Curb Return @ N.W. Corner of
 Kinkaid St. & Dröllinger Rd.
 Elevation = 1,323.33 NAVD 88

SHEET INDEX

SHEET NO.	SHEET TITLE
C0.01	COVER SHEET
C0.02	SURVEY CONTROL PLAN
C0.03	DEMOLITION PLAN
C1.01	SITE PLAN
C1.02	STAKING CONTROL PLAN
C1.03	EROSION CONTROL PLAN
C2.01	SWS 1 P&P
C2.02	SWS 1 P&P (2)
C2.03	SWS 2 P&P
C5.01	REINFORCED CONCRETE MH DTL
C5.02	INLET-MANHOLE DETAIL
C5.03	DITCH LINING DETAIL
C5.04	FENCE DETAIL
C5.05	EROSION CONTROL DETAIL 1
C5.06	EROSION CONTROL DETAIL 2
C5.07	EROSION CONTROL DETAIL 3
C5.08	EROSION CONTROL DETAIL 4
C5.09	EROSION CONTROL DETAIL 5



LOCATION MAP

1" = 100'



VICINITY MAP

1" = 1000'

ENGINEER'S NOTICE TO CONTRACTOR
 THE EXISTENCE AND LOCATION OF ANY UNDERGROUND UTILITY PIPES OR STRUCTURES SHOWN ON THESE DRAWINGS ARE OBTAINED BY A SEARCH OF THE AVAILABLE RECORDS. TO THE BEST OF OUR KNOWLEDGE THERE ARE NO EXISTING UTILITIES EXCEPT AS SHOWN ON THESE DRAWINGS AND WE ASSUME NO RESPONSIBILITY AS TO THE ACCURACY OF THEIR DEPICTED LOCATION ON THESE DRAWINGS. THE CONTRACTOR IS REQUIRED TO TAKE DUE PRECAUTIONARY MEASURES TO PROTECT THE UTILITY LINES SHOWN, AND ALL OTHER LINES NOT OF RECORD OR NOT SHOWN ON THESE DRAWINGS BY VERIFICATION OF THEIR LOCATION IN THE FIELD PRIOR TO THE INITIATION OF THE ACTUAL PORTION OF THEIR WORK.

SAFETY NOTICE TO CONTRACTOR
 IN ACCORDANCE WITH GENERALLY ACCEPTED CONSTRUCTION PRACTICES, THE CONTRACTOR WILL BE SOLELY AND COMPLETELY RESPONSIBLE FOR CONDITIONS OF THE JOB SITE, INCLUDING SAFETY OF ALL PERSONS AND PROPERTY DURING PERFORMANCE OF THE WORK. THIS REQUIREMENT WILL APPLY CONTINUOUSLY AND NOT BE LIMITED TO NORMAL WORKING HOURS.

THE DUTY OF THE ENGINEER TO CONDUCT CONSTRUCTION REVIEW OF THE CONTRACTOR'S PERFORMANCE IS NOT INTENDED TO INCLUDE REVIEW OF THE ADEQUACY OF THE CONTRACTOR'S SAFETY MEASURES, IN, OR NEAR THE CONSTRUCTION SITE.

Summary of Quantities

Item	Quantity	Unit
Sawed Joint	243	If
Asphalt Pavement Remove & Replace	150	sy
Concrete Pavement Remove & Replace	95	sy
Comb. C & G Remove & Replace	60	If
Concrete Sidewalk Remove & Replace	211	If
Site Clearing & Restoration	1	LS
SWS Pipe HDPE 18"	317	If
SWS Pipe RCP 42"	1110	If
SWS Pipe HERCP 38"x60" (48)	219	If
Inlet-Manhole Special, KDOT(8'-0" x 8'-0" x 6'-6")	1	ea
MH, Reinforced Concrete (7'-6" x 7'-6")	4	ea
Limestone Drainage Drop Structure	1	LS
Construction Entrance/Exit	1	LS
Project Seeding (Mulching-Hydro, FGM)	4,600	SY
Turf Reinforcement Mat (TRM) (Landlok 300)	580	SY
Concrete Ditch Liner (6"), KDOT	81	If

DRAWING FILE NAME AND LOCATION: G:\073010-406\ENGIN\G1\cover.dwg
 LAST SAVED BY: CW3002 - 2/12/2008 1:38:47 PM
 PLOTTED BY: CHRIS WINKLER (ONLY VALID ON HARD COPY)
 © 2007 Crafton Tull Sparks & Associates, Inc.



KS: 1-800-344-7233
 WICHITA: 316-687-2470



Crafton Tull Sparks
 8200 E. 34th Street North, Bldg. 1600
 Suite 1603, Wichita, KS 67226
 316.634.6776 FAX: 316.634.6777
 www.craftontullsparks.com

architecture | engineering

CESSNA PARK WEST
 STORM WATER SEWER
 IMPROVEMENTS
 WICHITA, KANSAS

ISSUED FOR CONSTRUCTION

Revision

COVER SHEET

Drawn by CKW	Job Number 073010-00
Checked by	Contact Person J. MOHLER

Date 2/08/08	Sheet Number C0.01
-----------------	------------------------------