

N-4,189.0039, E-10,606.5378  
Const. Clean-out  
E= 101.00  
See Details, Sheet No. 6 (CV406)

N-4,252.3298, E-10,569.9161  
Sta. 25+00.0 SWS Line No. 1A=  
Sta. 10+00.0 SWS Line No. 1  
Std. Area Inlet

N-4,397.4581, E-10,649.2002  
Const. Clean-out  
E= 100.82  
See Details, Sheet No. 6 (CV406)

N-4,422.3298, E-10,569.9639  
Sta. 30+00.0 SWS Line No. 1B=  
Sta. 11+70.0 SWS Line No. 1  
Std. Area Inlet

N-4,252.3195, E-10,606.5378  
Sta. 25+36.6 SWS Line No. 1A  
Const. Std. Manhole  
Dia. = 4'-0"  
Top Elev. = 104.7  
See Sheet 8 (CV 408)

N-4,291.8691, E-10,628.5172  
Const. Clean-out  
E= 101.15  
See Details, Sheet No. 6 (CV406)

N-4,397.4581, E-10,607.2002  
Const. Clean-out  
E= 100.40  
See Details, Sheet No. 6 (CV406)

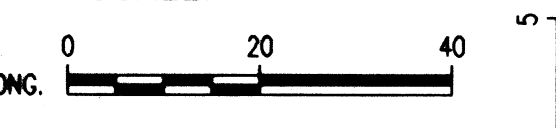

N-4,422.3193, E-10,607.2002  
Sta. 30+37.2 SWS Line No. 1B  
Const. Std. Manhole  
Dia. = 4'-0"  
Top Elev. = 105.3  
See Sheet 8 (CV 408)

N-4,271.5533, E-10,899.1102  
Const. Area Inlet (2'x 4')  
over existing 12" Pipe.  
Plug existing 12" pipe (S).  
Top Elev. = 104.2  
E= 100.84 (Field verify)  
See Sheet No. 6 (CV406)

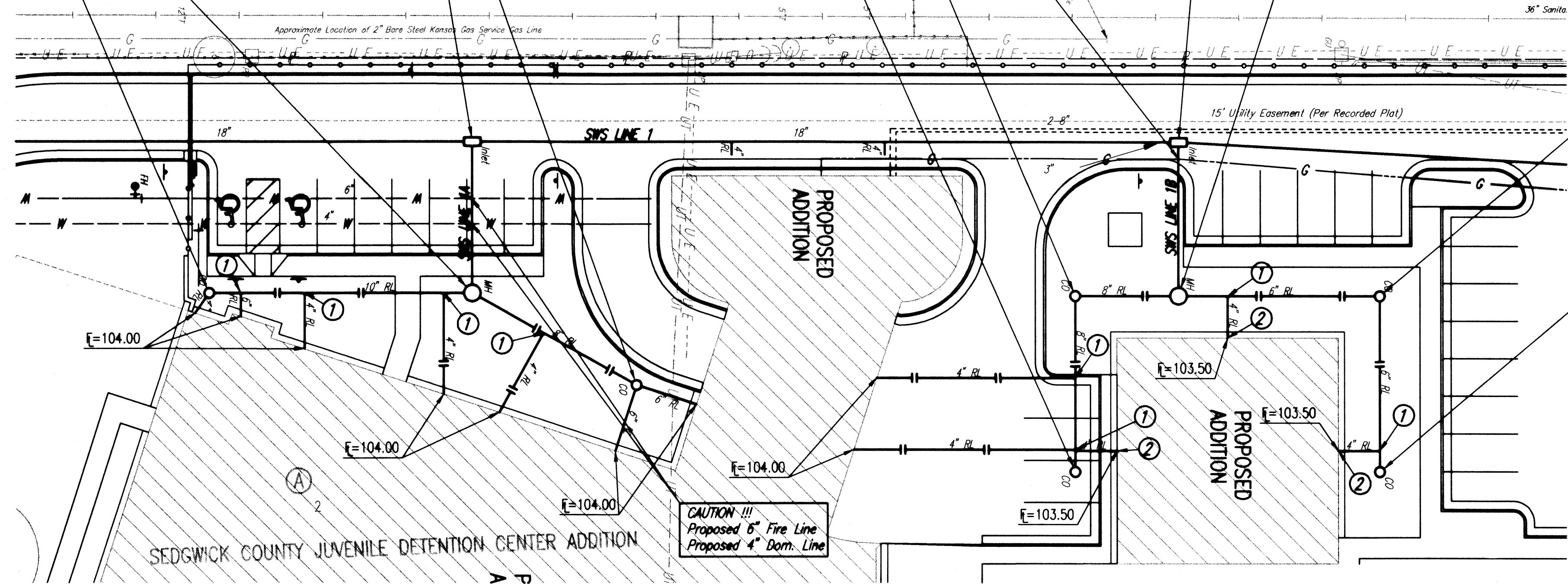
N-4,470.7915, E-10,607.2002  
Const. Clean-out  
E= 100.84  
See Details, Sheet No. 6 (CV406)

N-4,470.7915, E-10,649.2002  
Const. Clean-out  
E= 101.26  
See Details, Sheet No. 6 (CV406)

SCALE:

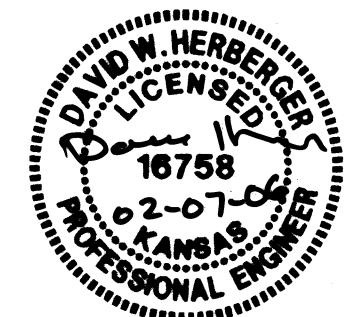
PLAN: LAT. & LONG.   
PROFILE: HORIZ. SAME AS ABOVE  
VERT. 

PLAN  
CHECKED  
DATE

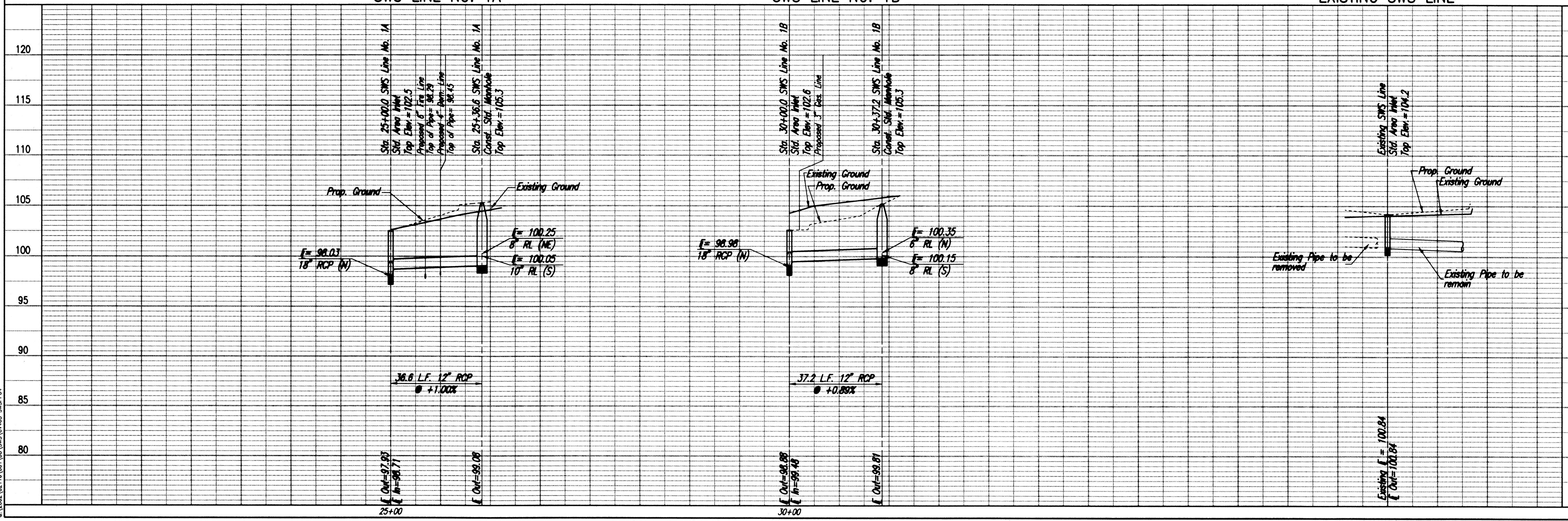


- ① Construct Branch Connections as required. (Typ.)
- ② Construct Downspout Connection. See Detail, Sheet 6

All Rain Leaders and SWS pipe less than 12" shall be under the Office of Central Inspection's Permit and not of this Public Works private project.



PROFILE  
CHECKED  
DATE



CITY OF WICHITA, KANSAS  
JAMES L. ARBOUR, P.E., CITY ENGINEER  
SEDGWICK COUNTY JUVENILE COURT COMPLEX  
SWS LINE NO. 1A & 1B,  
AND REPLACEMENT INLET

Professional Engineering Consultants, P.A.  
303 S. TOPEKA - WICHITA, KANSAS 67202  
316-262-2691 • FAX 316-262-3003  
Designed By: DWH  
Job No.: 35-02116-001-259  
Date: August 2003  
Drawn By: DCM

Save: 07-06-2006 9:55:26 AM by: ITS  
CV: 2002/07/16/10:01/00/SWS/0406\_SWSR04