

STORM WATER DRAIN NO. 179 EQUESTRIAN ESTATES ADDITION- PHASE 2 TO THE CITY OF WICHITA, KANSAS

JAMES L. ARMOUR, P.E. - CITY ENGINEER

PROJECT NO. 468-83319
OCA NO. 751410

GENERAL NOTES:

- Utility service lines, poles, valve boxes, meters and etc. are to be adjusted as necessary by others prior to construction unless the plans specifically call for their adjustment by the Contractor. Existing utilities and their location, as shown on the plans, represent the best information obtainable for design. The Contractor will be required to work around existing utilities within the right-of-way which do not conflict with proposed construction.
- Contractor will be required to provide a minimum advance notice of twenty-four (24) hours to utility companies prior to starting any excavation as follows:

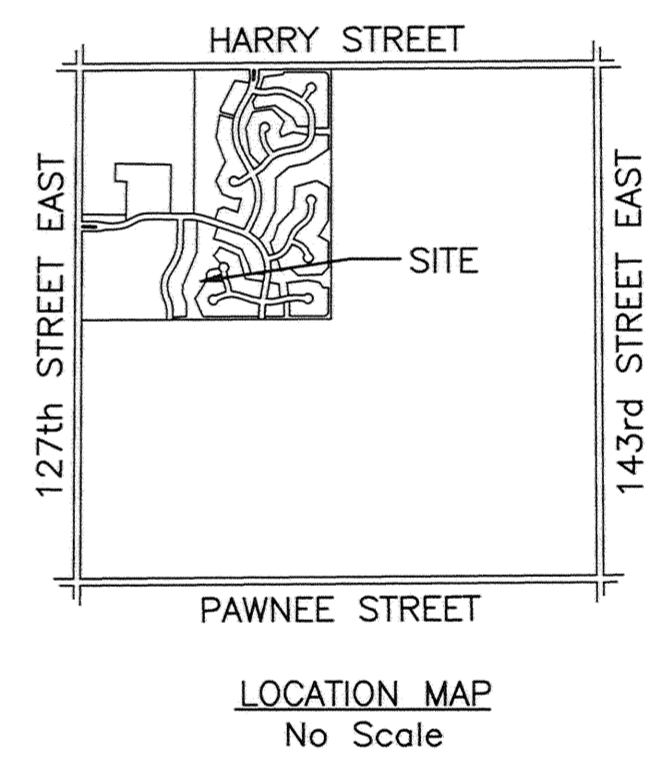
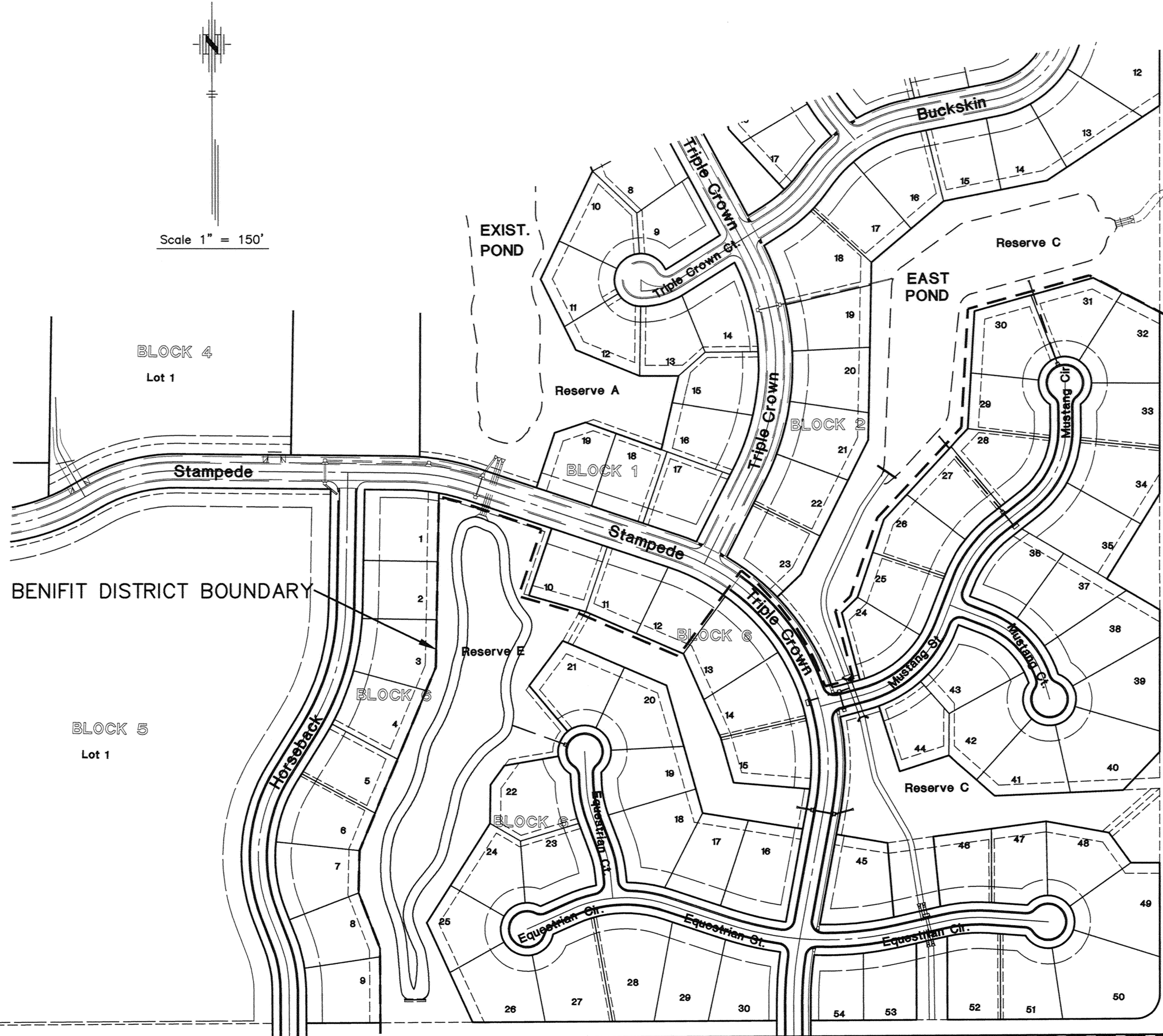
Kansas One-Call	1-800-344-7233
-----------------	----------------

The Contractor must notify the following in case of an emergency:

Cox Communications	262-4270 or 263-2061
Kansas Gas	263-7511
Westar Energy	264-1141
Aquila Networks	942-8350 or 263-8161
Southwestern Bell Tel. Co.	1-800-571-2611
City of Wichita Water Department	268-4908
- Rubble from the removal of miscellaneous structures and excess excavation which is to be wasted shall be disposed of on sites to be provided by the Contractor. These sites shall be approved by the Engineer as to suitability, appearance and site location. Locations that, in the opinion of the Engineer, will leave an unsightly appearance will not be approved.

All suitable excavation shall be wasted on low lying lots within the addition before any material is disposed of off site.

All disposal sites must be approved by the Kansas Department of Health and Environment. Material either stockpiled or disposed of in a flood plain would require a Kansas State Board of Agriculture permit. Any material dumped in waters of the United States or wetlands is subject to U.S. Corps. of Engineers permitting regulations. Any material buried or stockpiled beyond approved construction limits would require additional archaeological investigations unless buried in a previously approved borrow location.
- Trees and shrubs in public right-of-way which are in direct conflict with proposed new construction shall be removed by the Contractor with the Engineer's approval. Trees and shrubs which are not in direct conflict with proposed new construction shall be saved and protected from damage.
- The Contractor shall be responsible for preserving property irons. The Contractor will be required to reestablish any property irons which are damaged or destroyed by his construction operations. Such irons shall be reestablished by a licensed land surveyor in accordance with state laws.
- Trees are to be removed as needed. The cost is subsidiary to site clearing costs.
- All lawn/turf areas disturbed by construction shall be restored with the same sod as existing. Restoration of disturbed areas shall include, but not be limited to, top soil preparation and sodding. All sodding work shall be in accordance with City Standard Specifications and the City Administrative Regulation No. AR78, which governs cleanup and restoration or replacement following construction. The "Recapitulation of Quantities" will show the estimated Square Yards of disturbed lawn/turf area to be sodded, with a bid item for the same. When the weather/season prevents the installation of sod, the Contractor shall be responsible for installing Erosion Control Blanket (Curlax I, or approved equal) at the back of curb (8' wide minimum). All costs for erosion mat installation shall be subsidiary to "Site Restoration".
- The Contractor shall reseed all non-lawn/turf areas disturbed by construction with a mixture of Ryegrass (applied at a rate of 200 lbs per acre) and Fescue, Bermuda, or Buffalo grass, depending on the soil conditions (applied per Standard Specifications). Pure Nitrogen fertilizer shall also be applied at a rate of 1.5 lbs per thousand square feet. The seed shall be watered with deep soaking every two (2) weeks during dry periods until a mature stand of grass is obtained. The "Recapitulation of Quantities" will show the estimated Square Yards of disturbed non-lawn/turf area to be seeded, with a bid item for the same. The permanent seeding may be omitted only if sodding is required in accordance with previous General Note. The Contractor shall be responsible for installing Erosion Control Blanket (Curlax I, or approved equal) at the back of curb, to and including the limits of all seeded areas. All costs for this work shall be subsidiary to the seeding bid item.
- Contractor shall maintain all existing BMPs on project site during construction. Contractor shall repair or replace any existing BMPs that are damaged (Cost is subsidiary to site restoration). If BMPs were damaged prior to contractor beginning work on project, notify construction inspector or engineer.
- Contractor shall remove and stockpile organic material (topsoil) to surface (to a minimum of twelve (12) inches) all fills, embankments and any other areas on the site of the work where the original topsoil will be covered or damaged. Topsoil shall be free from trash, debris and surface vegetation more than six (6) inches in height. After all work has been completed in each area, topsoil shall be placed and graded. (Cost shall be subsidiary to Excavation)



BENCH MARKS

- (U.S.G.S. Datum)
- Railroad spike in power pole, approximately 25' south and 30' east of W 1/4 Corner, Section 35-27-2E. Elev. 1349.65
 - Square on south hub guard of RCBC just west of NW Corner of Section 35-27-2E. Elev. 1311.90

James M. Armour

EARTHWORK SUMMARY

Pond Excavation	39,520 C.Y.
Pond Fill	1,477 C.Y.
Waste **	38,043 C.Y.

(See Earthwork Summary Sheet for Site Balance)
 ** See Street Plans for Waste Placement on Site

JANUARY 2006

PE POE & ASSOCIATES, INC.
 CONSULTING ENGINEERS
 5940 E. Central, Suite 200 ■ Wichita, KS 67208-4242
 Phone 316/685-4114 ■ FAX 316/685-4444