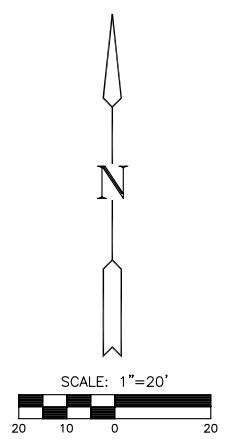
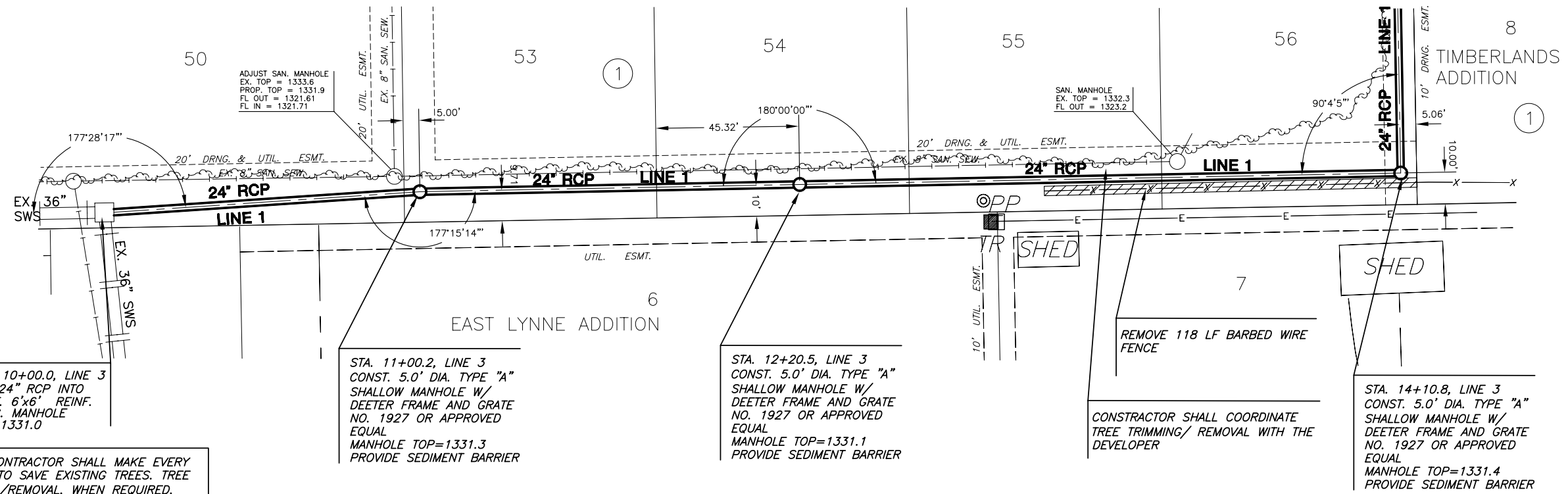
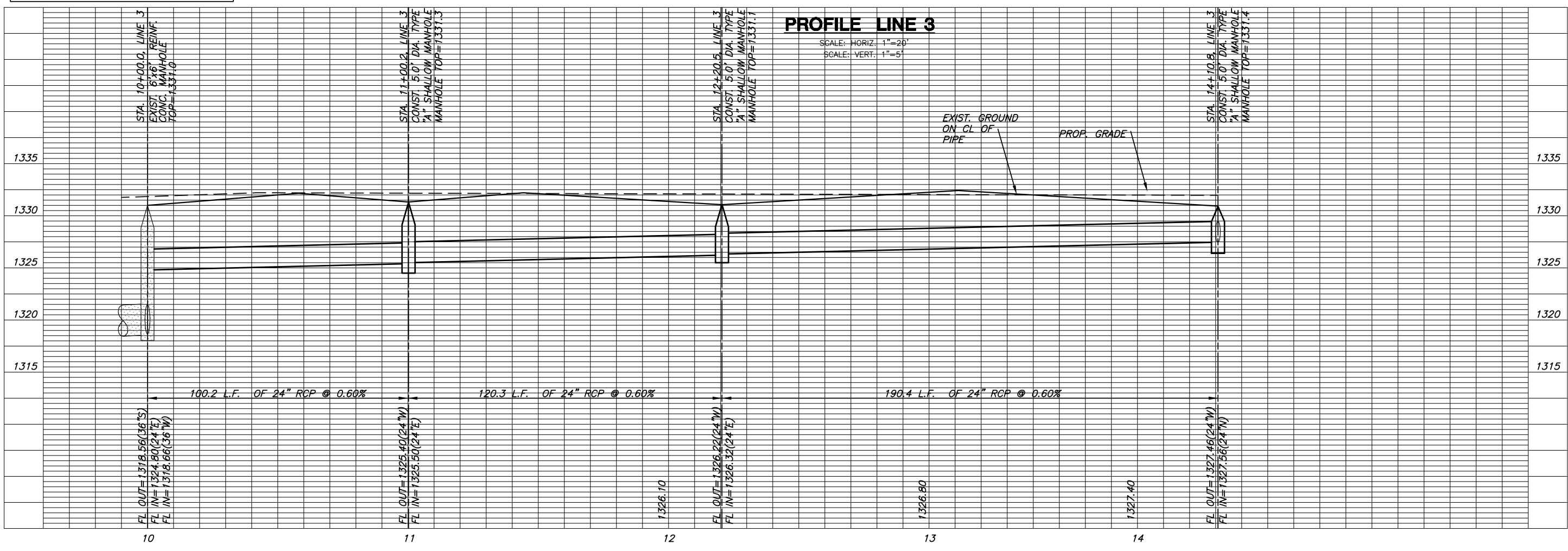


WOODLAND LAKES ESTATES
FOURTH ADDITION



NOTE: CONTRACTOR SHALL MAKE EVERY EFFORT TO SAVE EXISTING TREES. TREE TRIMMING/REMOVAL, WHEN REQUIRED, SHALL BE APPROVED BY THE DEVELOPER PRIOR TO COMMENCEMENT.

PLAN LINE 3



PAVING & INCIDENTAL DRAINAGE
WOODLAND LAKES 3RD & 4TH
ZIMMERLY PHASE

SWS
LINE 3
SHEET TITLE
PROJECT NUMBER
472-83718

DESIGN BY
SRS
DRAWN BY
DM
CHECKED BY
GJA

ISSUED
AUGUST 2006
REVISED

SHEET NO.
17 of 36