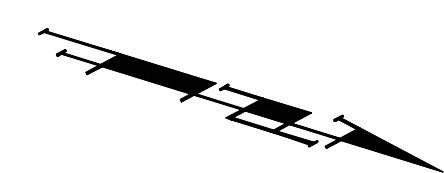


Benchmarks:

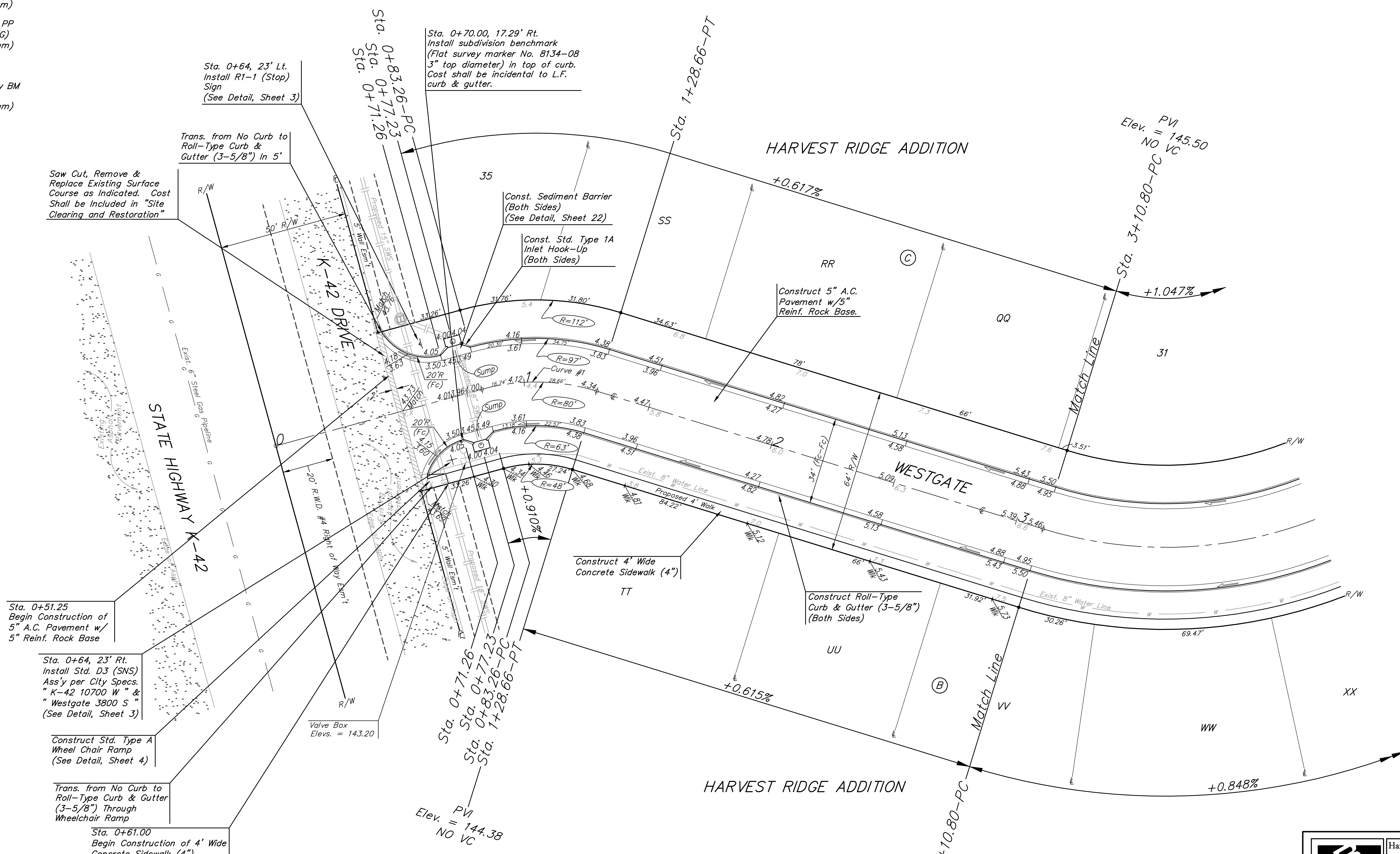
BM #1: Small RR spike in 2nd PP north of K-42 Highway, west side of Maize
Elev. = 143.61 (City Datum)

BM #2: Small RR spike in PP east of East 1/4 Corner (G)
Elev. = 147.00 (City Datum)

BM #3: "□" Top Headwall southeast corner K-42 Highway and Maize (County BM with City Datum)
Elev. = 144.04 (City Datum)



Scale: 1" = 20'
• = Iron



Sta. 0+51.25
Begin Construction of
5" A.C. Pavement w/
5" Reinf. Rock Base

Sta. 0+64, 23' Rt.
Install Std. D3 (SNS)
Ass'y per City Specs.
"K-42 10700 W" &
"Westgate 3800 S"
(See Detail, Sheet 3)

Construct Std. Type A
Wheel Chair Ramp
(See Detail, Sheet 4)

Trans. from No Curb to
Roll-Type Curb & Gutter
(3-5/8") Through
Wheelchair Ramp

Sta. 0+61.00
Begin Construction of 4' Wide
Concrete Sidewalk (4")

Sta. 0+64, 23' Lt.
Install R1-1 (Stop)
Sign
(See Detail, Sheet 3)

Saw Cut, Remove &
Replace Existing Surface
Course as Indicated. Cost
Shall be Included in "Site
Clearing and Restoration"

Trans. from No Curb to
Roll-Type Curb &
Gutter (3-5/8") In 5'

Sta. 0+70.00, 17.29' Rt.
Install subdivision benchmark
(Flat survey marker No. 8134-08
3" top diameter) in top of curb.
Cost shall be incidental to L.F.
curb & gutter.

Const. Sediment Barrier
(Both Sides)
(See Detail, Sheet 22)

Const. Std. Type 1A
Inlet Hook-Up
(Both Sides)

HARVEST RIDGE ADDITION

WESTGATE

HARVEST RIDGE ADDITION

PVI
Elev. = 144.38
NO VC

PVI
Elev. = 145.50
NO VC

PVI
Elev. = 145.50
NO VC

Curve #1
Curve Data Based on Centerline
Rad. = 80' Delta = 32° 31' 00" Tangent = 23.33'
Arc = 45.40' L.C. = 44.79' Def/Ft. = 21.48678 Min.

Station	Arc	FACE CHORD LENGTHS		Defl.	T. Defl.
		8' Lt.	8' Rt.		
0+83.26	-	-	-	0°00'00"	0°00'00"
1+00.00	16.74'	21.93'	11.49'	5°59'41"	5°59'41"
1+25.00	25.00'	32.68'	17.12'	8°57'11"	14°56'52"
1+28.66	3.66'	4.80'	2.52'	11°8'38"	16°15'30"

Roll type curb & gutter to
be constructed on the pavement
on this sheet.
Top of curb elevation are given
for full height curb.

		Harvest Ridge Addition - Phase II WESTGATE STA. 0+00 STA. 3+10.80	
Baughman Company, P.A. 315 Ellis St. Wichita, KS 67211 P 316-262-7271 F 316-262-0149 ENGINEERING SURVEYING PLANNING LANDSCAPE ARCHITECTURE			
PROJECT NUMBER 472-83805	DESIGN MWS/JAK	DRAWN JAK	DATE 4/12/06
REVISIONS:		SCALE Noted	
		5 OF 34	
E:Eng\Harvest Ridge\Phase 2\Str1		06-01-E485	