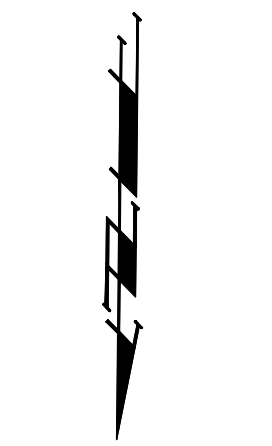


**Benchmarks:**

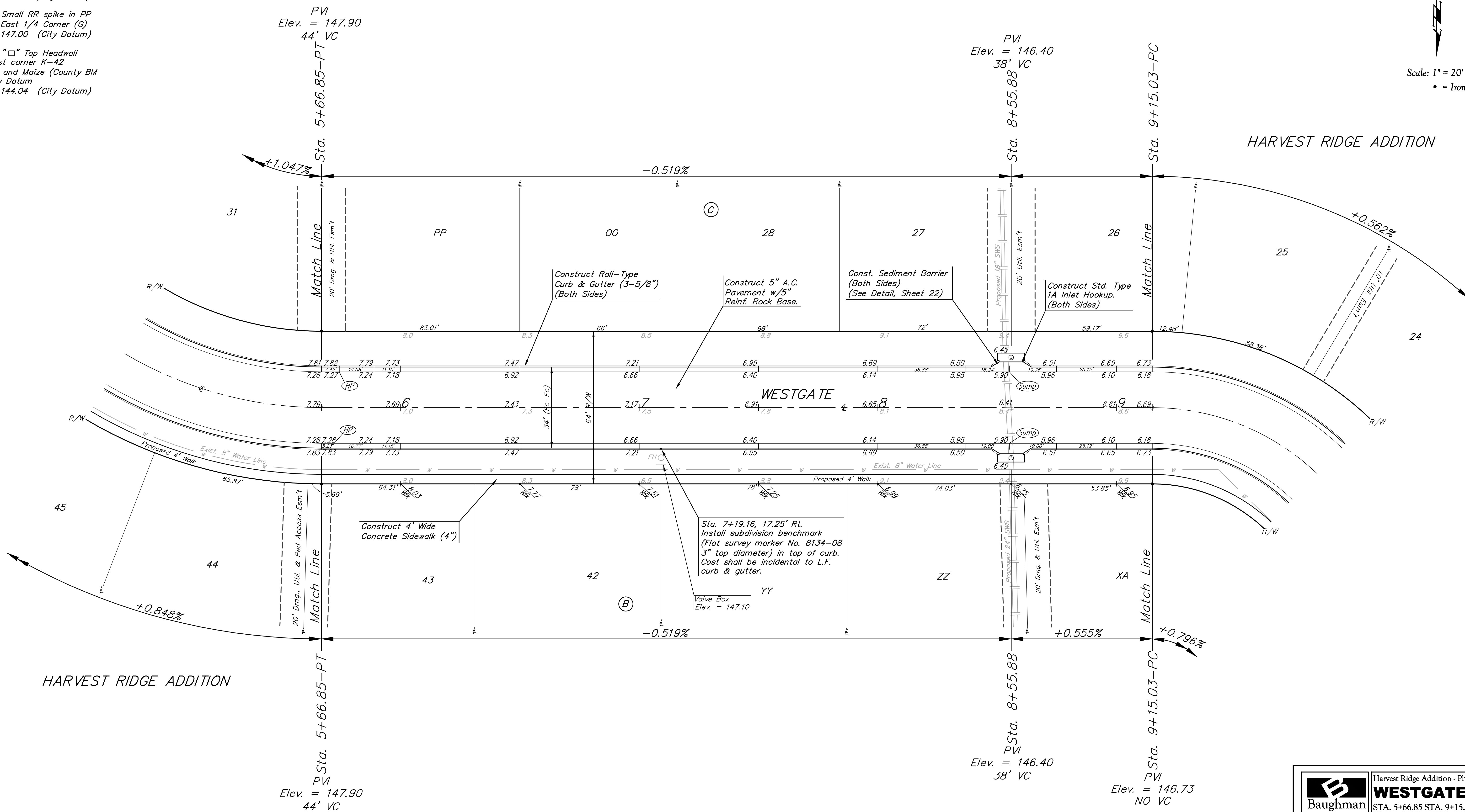
BM #1: Small RR spike in 2nd PP north of K-42 Highway, west side of Maize  
Elev. = 143.61 (City Datum)

BM #2: Small RR spike in PP east of East 1/4 Corner (G)  
Elev. = 147.00 (City Datum)

BM #3: "□" Top Headwall southeast corner K-42 Highway and Maize (County BM with City Datum)  
Elev. = 144.04 (City Datum)



Scale: 1" = 20'  
• = Iron



Roll type curb & gutter to be constructed on the pavement on this sheet.  
Top of curb elevation are given for full height curb.

		Harvest Ridge Addition - Phase II	
		STA. 5+66.85 STA. 9+15.03	
<small>Baughman Company, P.A. 315 Ellis St. Wichita, KS 67211 P 3162627271 F 3162620149 ENGINEERING   SURVEYING   PLANNING   LANDSCAPE ARCHITECTURE</small>			
PROJECT NUMBER 472-83805	DESIGN MWS/JAK	DRAWN JAK	DATE 4/12/06
REVISIONS:	APPROVED MWS	SCALE Noted	SHEET 7 OF 34