

Benchmarks:

"□" Cut Top of Curb North End of Northwest Return at Highland Springs & Hardtner Elev. = 178.72 (City Datum)

"□" Cut Top of Curb West Side of Kentucky Lane ±20' South of End of Existing pavement. Elev. = 182.16 (City Datum)

HIGHLAND SPRINGS 2ND ADDITION

Sta. 0+00, Begin Line 2 Connect to Existing 24" Stub and Extend 24" RCP N.W. Contractor to Verify Depth and Location of Existing Stub Prior to Construction.

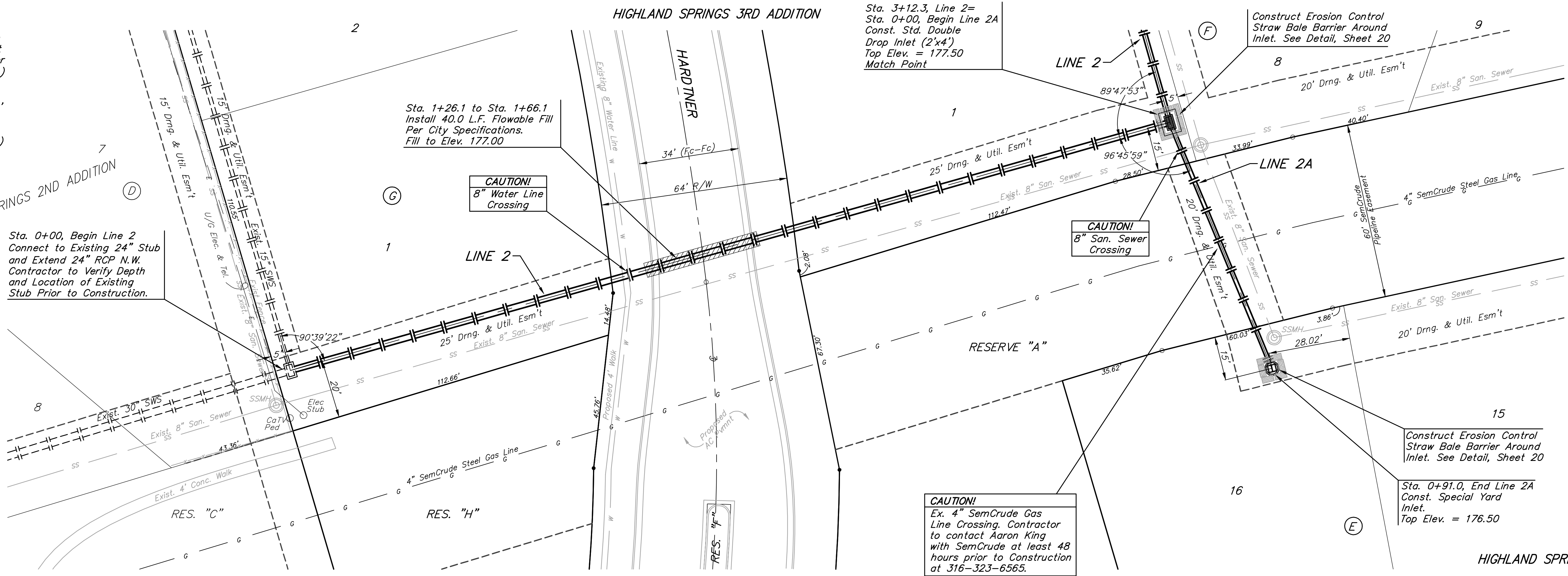
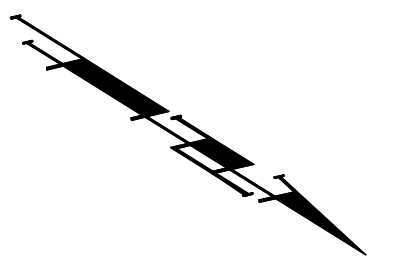
Sta. 1+26.1 to Sta. 1+66.1 Install 40.0 L.F. Flowable Fill Per City Specifications. Fill to Elev. 177.00

Sta. 3+12.3, Line 2 = Sta. 0+00, Begin Line 2A Const. Std. Double Drop Inlet (2'x4') Top Elev. = 177.50 Match Point

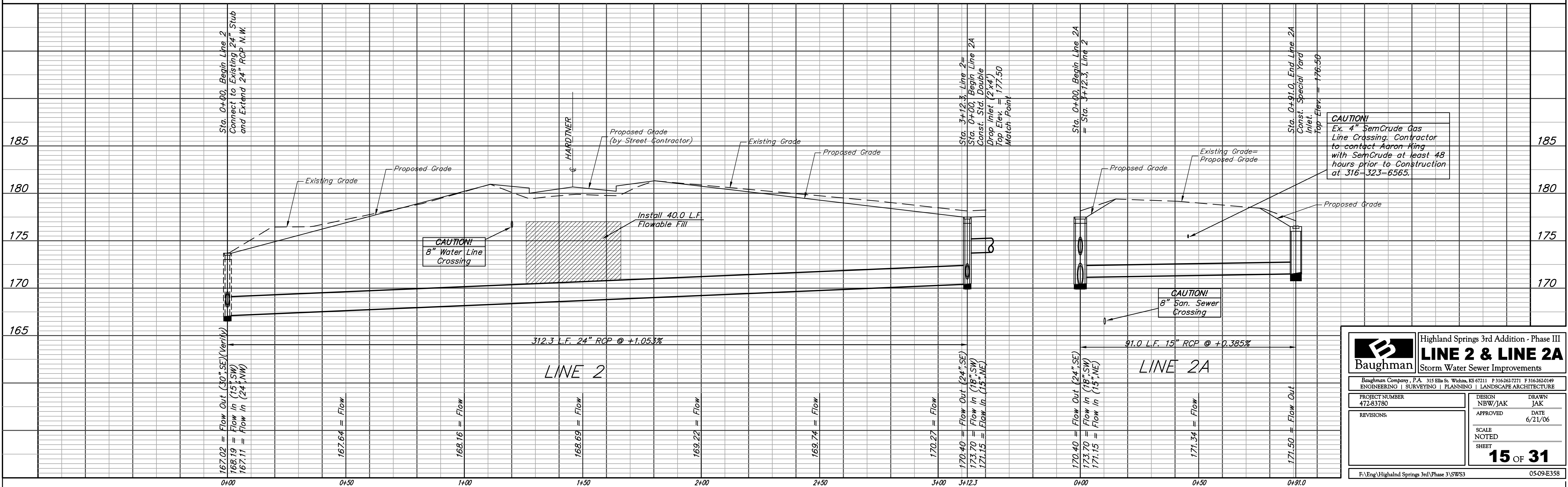
Construct Erosion Control Straw Bale Barrier Around Inlet. See Detail, Sheet 20

Sta. 0+91.0, End Line 2A Const. Special Yard Inlet. Top Elev. = 176.50

SCALE:
1" = 20' HORIZONTAL
1" = 5' VERTICAL
• = IRON



HIGHLAND SPRINGS 3RD ADDITION



		Highland Springs 3rd Addition - Phase III	
		LINE 2 & LINE 2A	
Storm Water Sewer Improvements		PROJECT NUMBER 472-83780	
REVISIONS:		DESIGN NBW/JAK	
APPROVED		DRAWN JAK	
SCALE NOTED SHEET		DATE 6/21/06	
15 OF 31		F:\Eng\Highland Springs 3rd\Phase 3\SW3	