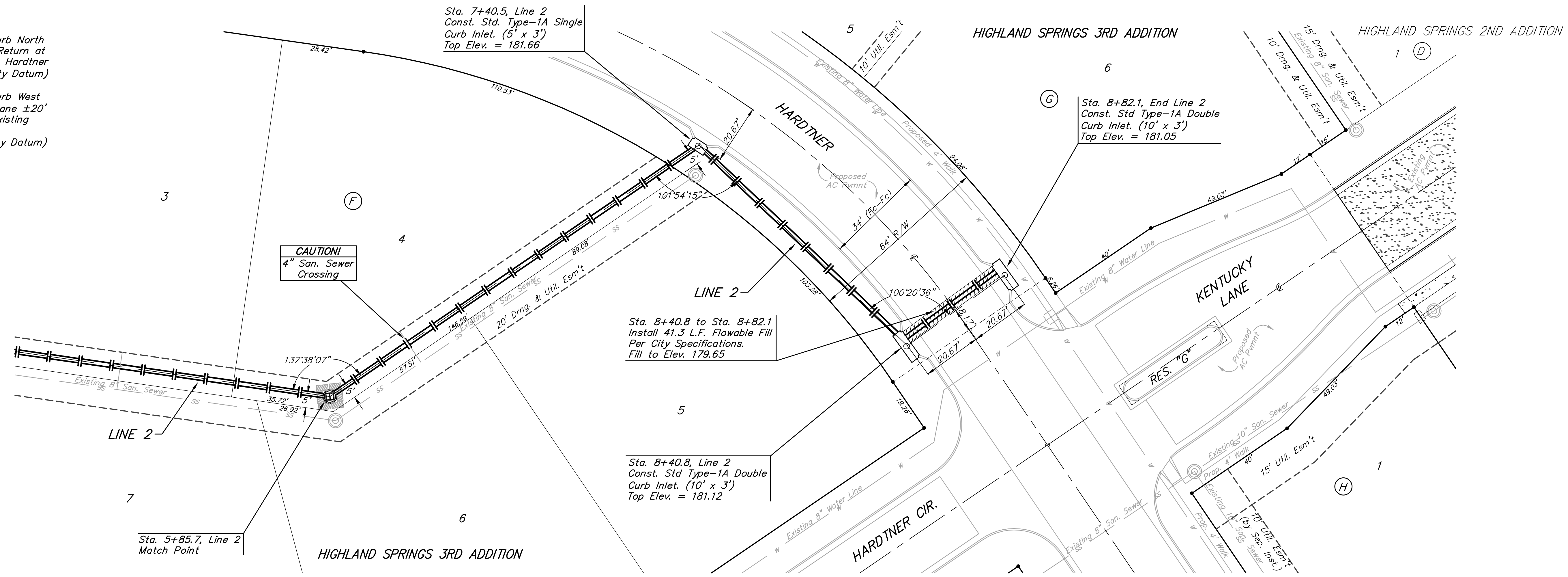


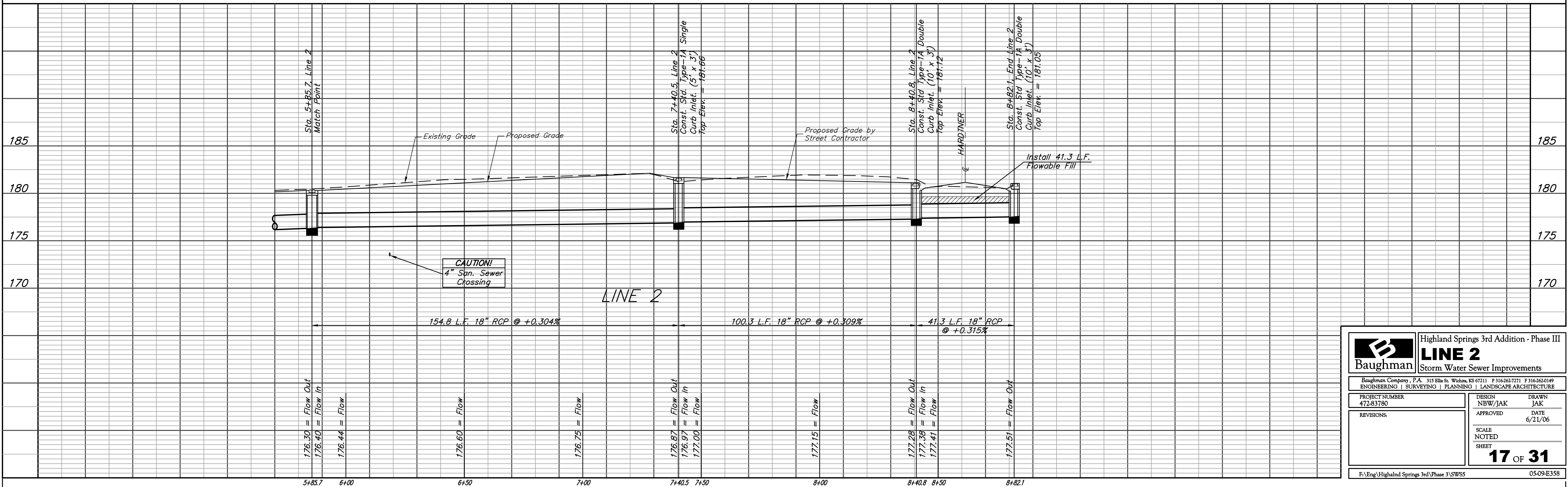
**Benchmarks:**

"□" Cut Top of Curb North End of Northwest Return at Highland Springs & Hardtner Elev. = 178.72 (City Datum)

"□" Cut Top of Curb West Side of Kentucky Lane ±20' South of End of Existing pavement. Elev. = 182.16 (City Datum)



SCALE:  
1" = 20' HORIZONTAL  
1" = 5' VERTICAL  
• = IRON



		Highland Springs 3rd Addition - Phase III	
		<b>LINE 2</b> Storm Water Sewer Improvements	
<small>Baughman Company, P.A. 315 Ellis St. Wichita, KS 67111 P 316-363-7271 F 316-363-0149 ENGINEERING   SURVEYING   PLANNING   LANDSCAPE ARCHITECTURE</small>			
PROJECT NUMBER 472-83780	DESIGN NBW/JAK	DRAWN JAK	DATE 6/21/06
REVISIONS:		APPROVED	SCALE NOTED
			SHEET <b>17 OF 31</b>
F:\Eng\Highland Springs 3rd\Phase 3\SWSS			05-09-E358