

BENCHMARKS:

CITY OF WICHITA BENCHMARK DISC, TOP OF CURB AT WEST END OF CURB RETURN, NORTHWEST CORNER OF INTERSECTION OF CITY VIEW AND SHERIAC CIR. IN SHADOW WOODS ADDITION.
ELEV. = 199.26 (CITY DATUM)

CITY OF WICHITA BENCHMARK DISC, TOP OF CURB AT NORTH END OF CURB RETURN, NORTHWEST CORNER OF INTERSECTION OF BURTON AND CAVIT IN SHADOW WOODS ADDITION.
ELEV. = 193.21 (CITY DATUM)

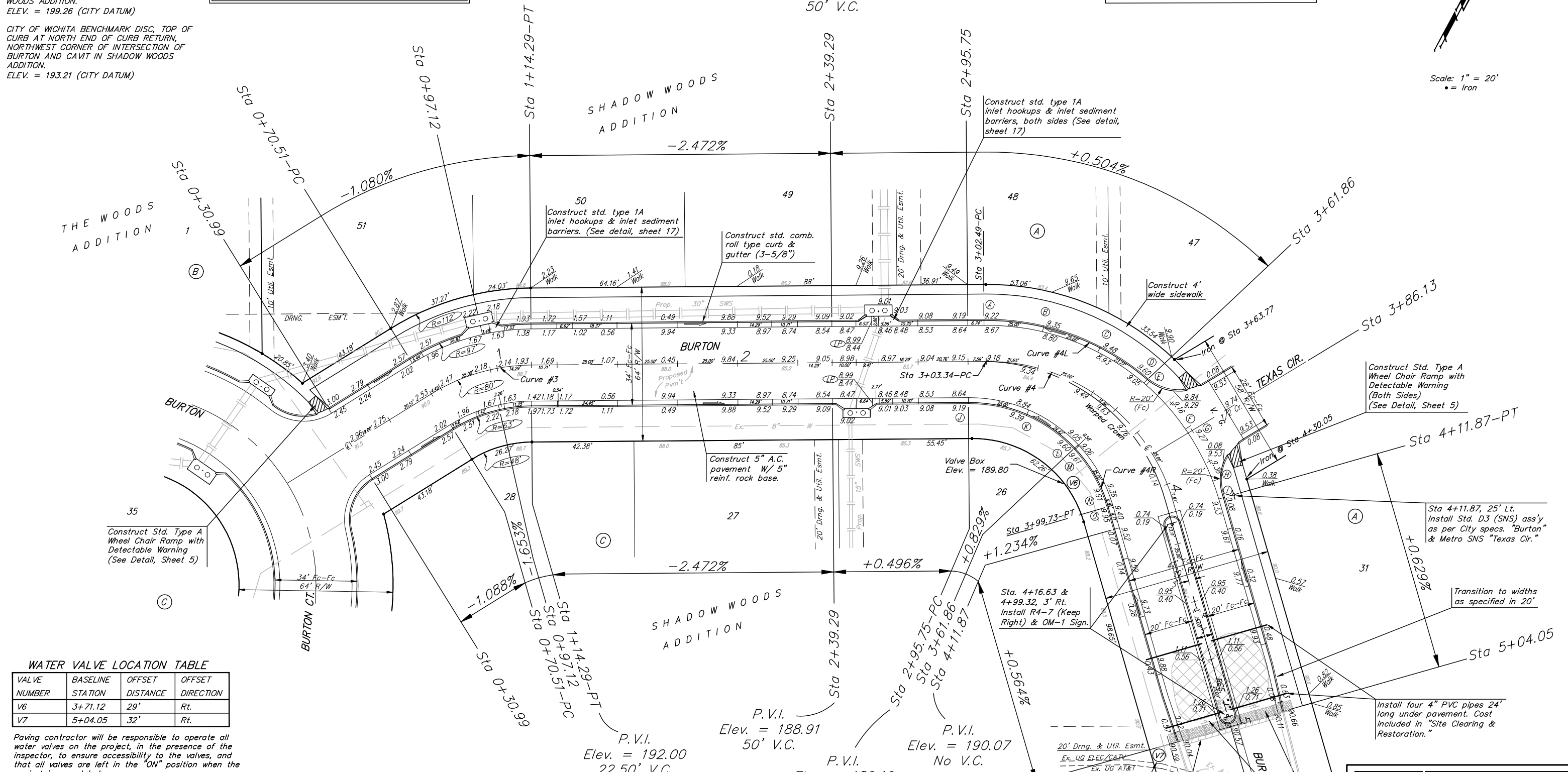
Trees and shrubs in public right-of-way which are in direct conflict with proposed new construction shall be removed by the Contractor ONLY with the Developer or Baughman Company approval. Trees and shrubs which are not in direct conflict with proposed new construction shall be saved and protected from damage.

P.V.I.
Elev. = 192.00
34.66' V.C.

P.V.I.
Elev. = 188.91
50' V.C.

NOTE: ROLL TYPE CURB & GUTTER TO BE CONSTRUCTED ON THE PAVEMENT SHOWN ON THIS SHEET. TOP OF CURB ELEVATIONS ARE GIVEN FOR FULL HEIGHT CURB.

Scale: 1" = 20'
• = Iron



WATER VALVE LOCATION TABLE

VALVE NUMBER	BASELINE STATION	OFFSET DISTANCE	OFFSET DIRECTION
V6	3+71.12	29'	Rt.
V7	5+04.05	32'	Rt.

Paving contractor will be responsible to operate all water valves on the project, in the presence of the inspector, to ensure accessibility to the valves, and that all valves are left in the "ON" position when the project is completed.

Curve #3
Curve Data Based on Centerline
Rad. = 80' Delta = 31°21'19" Tangent = 22.45'
Arc = 43.78' L.C. = 43.24' Def./Ft. = 21.48603 Min.

Station	Arc	FACE CHORD LENGTHS		Defl.	T. Defl.
		8' Lt.	8' Rt.		
0+70.51	-	-	-	0°00'00"	0°00'00"
0+75.00	4.49'	5.89'	3.09'	1°36'28"	1°36'28"
0+97.12	22.12'	28.94'	15.16'	7°55'17"	9°31'45"
1+00.00	2.88'	3.78'	1.98'	1°01'52"	1°03'37"
1+14.29	14.29'	18.73'	9.81'	5°07'03"	15°40'40"

Curve #4L
Curve Data Based on Face of Curve
Rad. = 102' Delta = 74°25'11" Tangent = 77.45'
Arc = 132.98' L.C. = 123.37' Def./Ft. = 16.78893 Min.

Station	Arc	FACE CHORD LENGTHS		Defl.	T. Defl.
		8' Lt.	8' Rt.		
A	-	-	-	0°00'00"	0°00'00"
B	25.00'	26.79'	26.79'	6°59'43"	6°59'43"
C	25.00'	26.79'	26.79'	6°59'44"	13°59'27"
D	23.77'	25.48'	25.48'	6°39'04"	20°38'31"
E	1.23'	1.32'	1.32'	0°20'39"	20°59'10"
F	25.00'	26.79'	26.79'	6°59'44"	27°58'54"
G	2.05'	2.20'	2.20'	0°34'25"	28°33'19"
H	22.95'	24.61'	24.61'	6°25'18"	34°58'37"
I	7.98'	8.57'	8.57'	2°13'59"	37°12'36"

Curve #4R
Curve Data Based on Face of Curve
Rad. = 60' Delta = 74°18'42" Tangent = 45.47'
Arc = 77.81' L.C. = 72.48' Def./Ft. = 28.65120 Min.

Station	Arc	FACE CHORD LENGTHS		Defl.	T. Defl.
		8' Rt.	8' Lt.		
J	-	-	-	0°00'00"	0°00'00"
K	25.00'	21.51'	21.51'	11°56'17"	11°56'17"
L	24.42'	21.02'	21.02'	11°39'40"	23°35'57"
M	0.58'	0.50'	0.50'	0°16'37"	23°52'34"
N	25.00'	21.51'	21.51'	11°56'16"	35°48'50"
O	2.81'	2.44'	2.44'	1°20'31"	37°09'21"

Burton
Street Paving

ShADOW WOODS ADD. - PH V

Engineering | Surveying | Planning | Landscape Architecture

PROJECT NUMBER: 472-84060

DESIGN: AEO

DRAWN: JEB

APPROVED: [Signature]

DATE: 6-21-06

SCALE: Noted

SHEET: 7 OF 37

06-01-E467

Contractor shall repair/replace any sod, seeding, or sprinklers disturbed during construction.

Saw, cut, remove and replace 2' existing pavement as shown. To be incidental to "Site Clearing & Restoration".

Contractor shall remove and dispose of existing straw bale barrier, end or road signs, and concrete wash piles.