

# SHADOW WOODS ADDITION

## WICHITA, SEDGWICK COUNTY, KANSAS

Maple Group, L.L.C.,

Jay W. Russell

Member

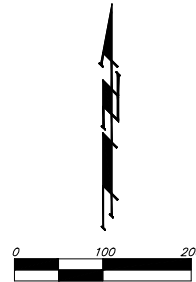
(See Page 1 for Owners Acknowledgement)

LOT	BLOCK	ELEVATION
1-24	D	177.2
1-7	E	160.5

**BENCHMARK:**  
135th St. W. & Maple -  
City of Wichita Benchmark Disc  
on headwall at NE corner  
of intersection.  
34.00' SW to Section Cor. iron.  
Elev. = 150.29 City Datum  
(1337.69 NGVD29)

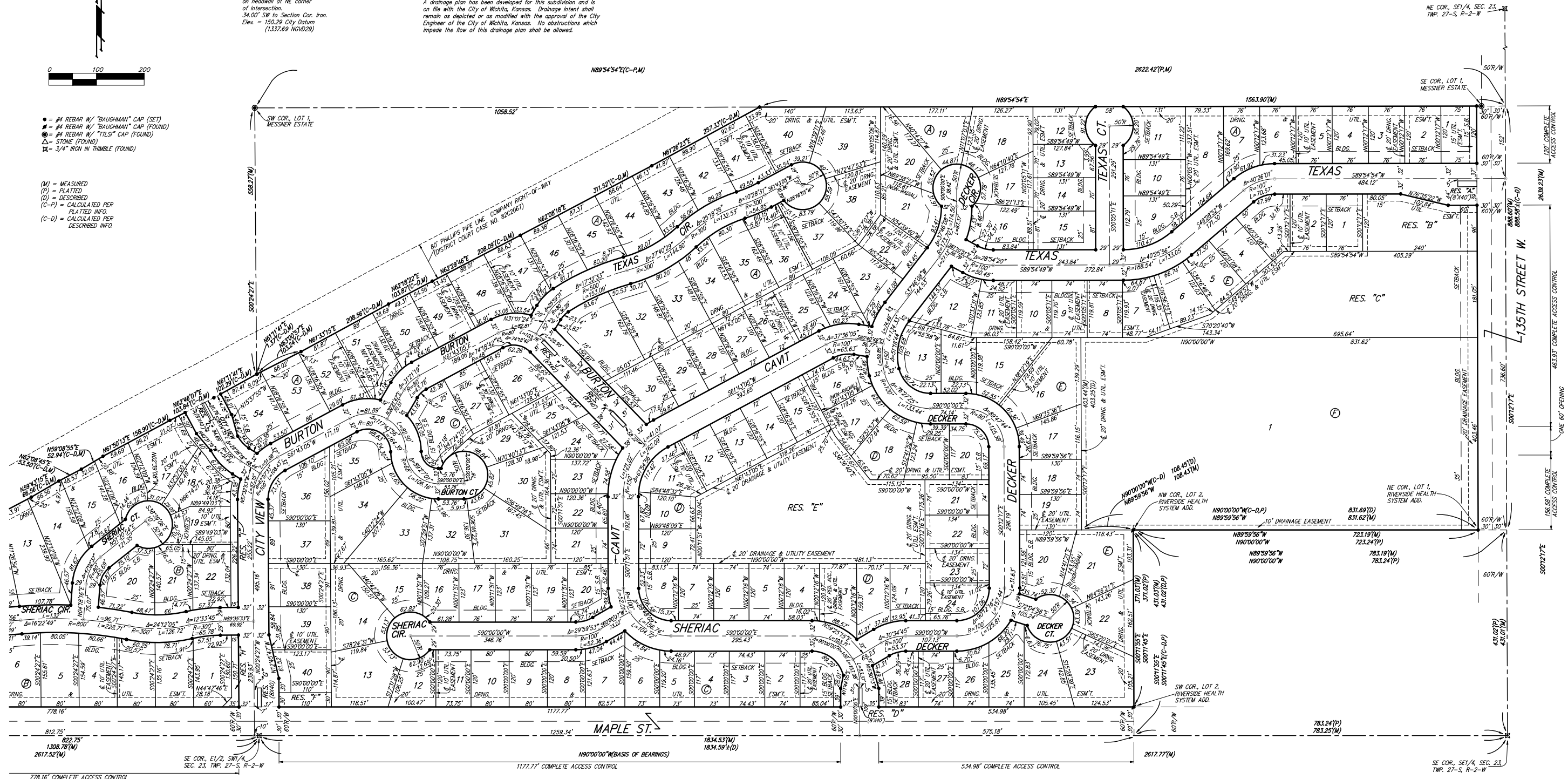
**NOTE:**  
A master grading plan for drainage has been developed for this subdivision and is on file with the City of Wichita, Kansas. All drainage easements, rights-of-way, or reserves shall remain as established grades or as modified with the approval of the City Engineer of the City of Wichita, Kansas. No obstructions which impede the flow of this drainage system shall be allowed.

**NOTE:**  
A drainage plan has been developed for this subdivision and is on file with the City of Wichita, Kansas. Drainage intent shall remain as depicted or as modified with the approval of the City Engineer of the City of Wichita, Kansas. No obstructions which impede the flow of this drainage plan shall be allowed.



- = #4 REBAR W/ "BAUGHMAN" CAP (SET)
- = #4 REBAR W/ "BAUGHMAN" CAP (FOUND)
- ⊙ = #4 REBAR W/ "TILTS" CAP (FOUND)
- △ = STONE (FOUND)
- ⊠ = 3/4" IRON W. TRIMBLE (FOUND)

- (M) = MEASURED
- (P) = PLATTED
- (D) = DESCRIBED
- (C-P) = CALCULATED PER PLATTED INFO.
- (C-D) = CALCULATED PER DESCRIBED INFO.



NE COR., SE 1/4, SEC. 23,  
TWP. 27-S, R-2-W

SE COR., E 1/2, SW 1/4,  
SEC. 23, TWP. 27-S, R-2-W

1177.77' COMPLETE ACCESS CONTROL

534.98' COMPLETE ACCESS CONTROL

SE COR., SE 1/4, SEC. 23,  
TWP. 27-S, R-2-W