

11 OF 35

REVISIONS:
 4/12/2010
 DESIGN
 APPROVED
 DATE 04/06
 SCALE Noted
 SHEET

Baughman
 KRUG NORTH 2ND ADD. - PH. IV
 STA 0+00 TO STA 1+53.02

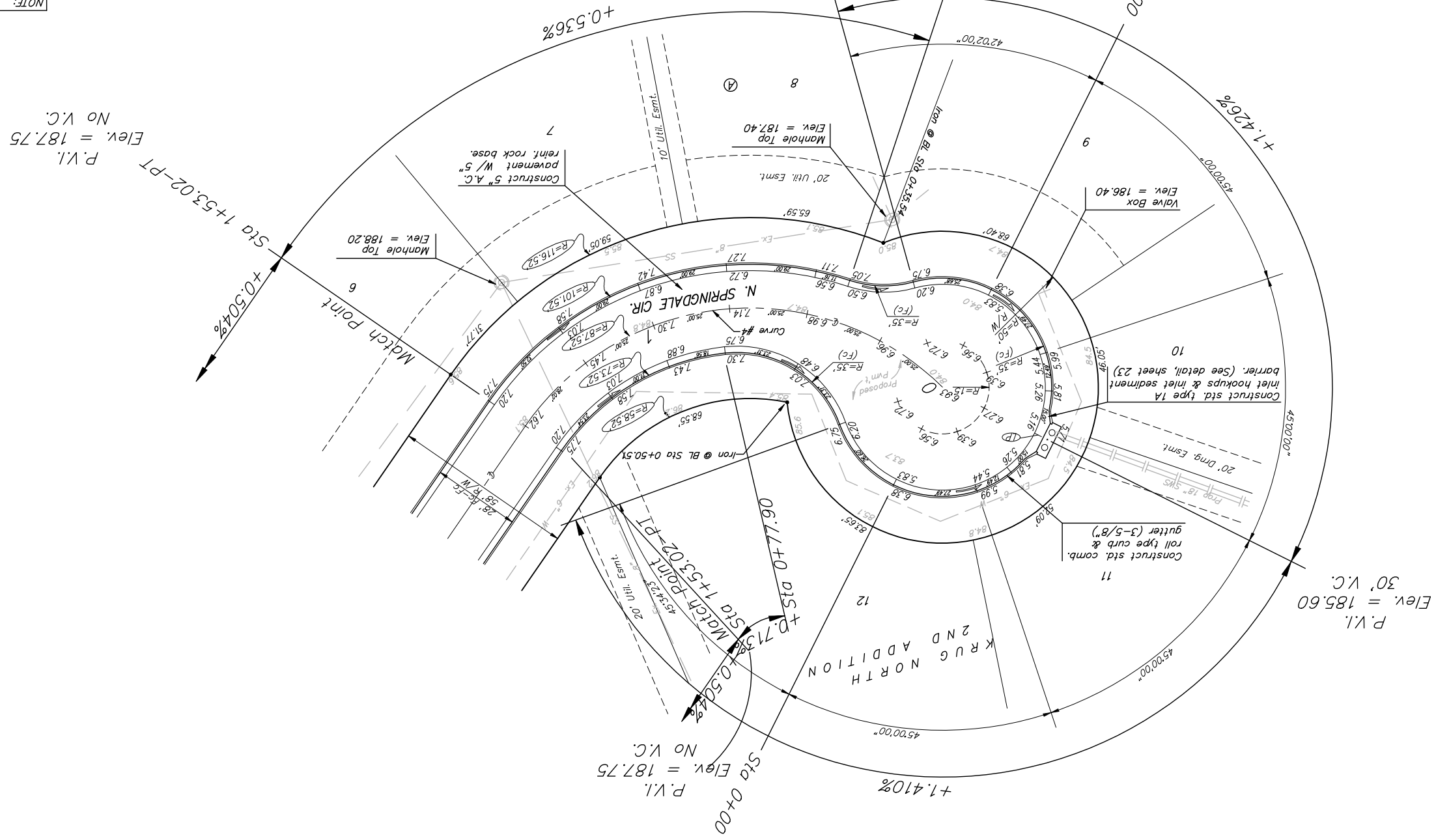
Engineering Company, P.A. 315 8th St. W., Wabash, IN 46781-1771 317-621-7771 317-621-0100
 ENGINEERING | SURVEYING | PLANNING | LANDSCAPE ARCHITECTURE
 PROJECT NUMBER 417284250

05-12-B449

Street & Station	Location Description	Elevation
24th St. N.	Adjacent to Fire Hydrant at E. End of E. Curb Return of 24th St. N. and Quincy Cir.	1+82.75, 17.25' Lt.
Quincy Cir.	Adjacent to Fire Hydrant near common lot corner of Lots 17-18, Block E.	3+62.20, 17.25' Rt.
N. Springdale Cir.	Adjacent to Fire Hydrant near common lot corner of Lots 1-17, Block A)	(Lots 1-17, Block A)
N. Springdale Cir.	Adjacent to Fire Hydrant near common lot corner of Lots 9-10, Block E)	(Lots 9-10, Block E)
N. Springdale Cir.	Adjacent to Fire Hydrant near common lot corner of Lots 1-13, Block E)	3+82.00, 14.25' Lt.

Station	Arc	Defl.	Station	Arc	Defl.
0+00.00	0.0000"	0.0000"	0+00.00	0.0000"	0.0000"
0+40.38	29.96'	50.09'	0+40.38	29.96'	50.09'
0+50.00	7.20'	12.03'	0+50.00	7.20'	12.03'
0+75.00	18.65'	31.18'	0+75.00	18.65'	31.18'
0+77.90	2.90'	2.17'	0+77.90	2.90'	2.17'
1+00.00	22.10'	16.50'	1+00.00	22.10'	16.50'
1+25.00	25.00'	18.65'	1+25.00	25.00'	18.65'
1+50.00	25.00'	18.65'	1+50.00	25.00'	18.65'
1+53.02	3.02'	2.26'	1+53.02	3.02'	2.26'
FACE CHORD LENGTHS					
8' Lt.		8' Rt.	8' Lt.		8' Rt.
T. Defl.					
Station					
Curve Data Based on Centerline					
Rad = 87.52'		Delta = 100° 10' 55"	Tangent = 104.64'		
Arc = 153.02'		L.C. = 134.27'	Defl/Ft. = 19.64095 Mn.		

NOTE:
 ROLL TYPE CURB & GUTTER TO BE CONSTRUCTED ON THE PAVEMENT SHOWN ON THIS SHEET. TOP OF CURB ELEVATIONS ARE GIVEN FOR FULL HEIGHT CURB.



BENCHMARK:
 BM #1: "□" Cut in middle of N headwall of RCBC on 21st St. North, 1004.3' W & 22.1' N of SE Cor., SE1/4, Sec. 2, T-27-S, R-2-E, Elev. = 173.23 City Datum
 BM #2: "□" Cut at the SE corner of the intersection of Castle Rock & Castle Rock Ct., Krug North Addition, Elev. = 183.50 City Datum

