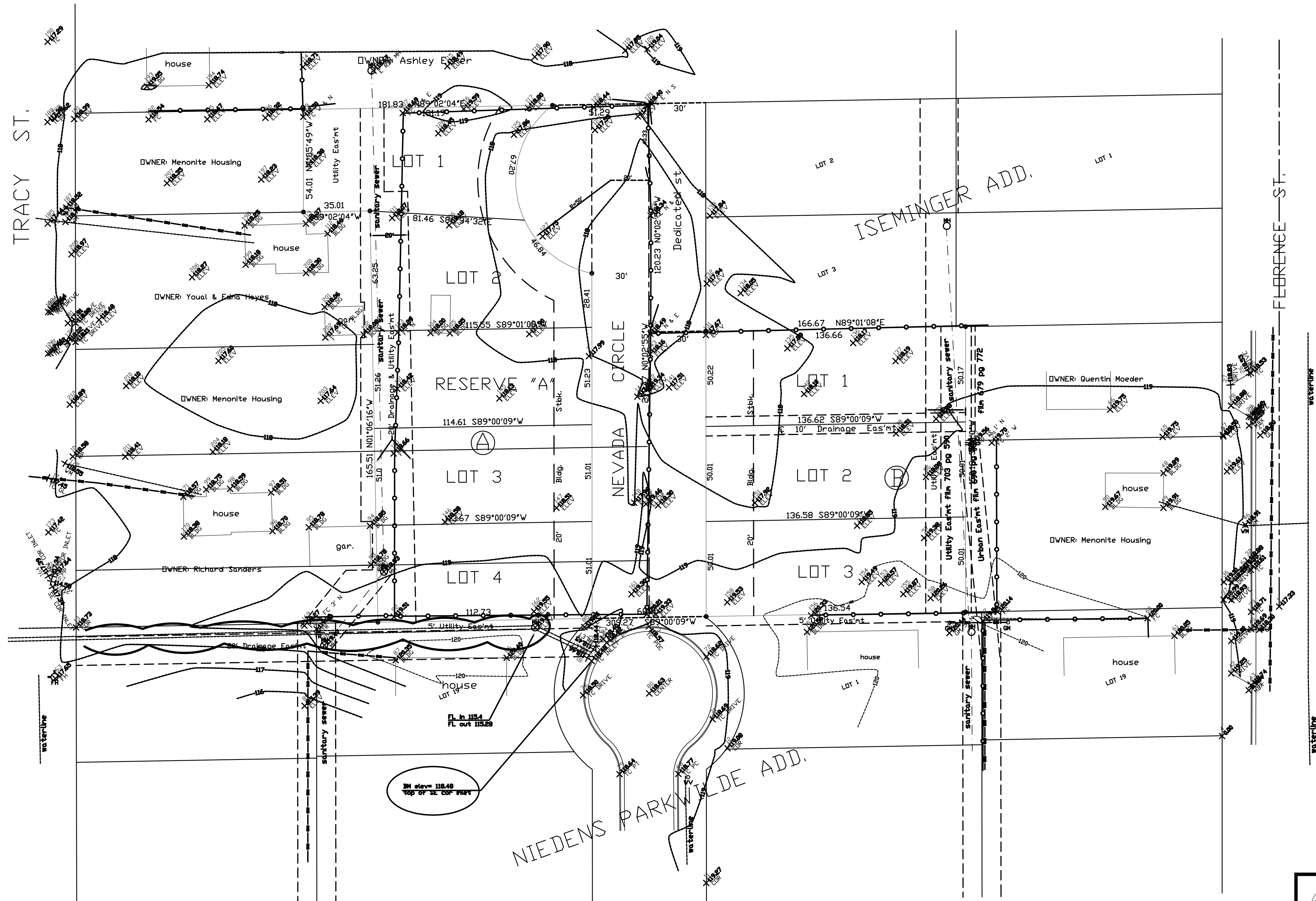


PRELIMINARY PLAT BLUE SKY ADDITION TO WICHITA, SEDGWICK COUNTY, KANSAS

OWNER: Menonite Housing
2145 N. Topeka
Wichita, KS 67214
ZONING: R



LEGEND

- - set 5/8" rebar & 'Armstrong' cap
- - iron in table
- - found 3/4" iron pipe
- - found 1/2" iron pipe
- - found chiseled in concrete
- - found chiseled in concrete
- M - measured distance
- P - plat distance
- cn - calculated from measured distance
- - property line
- - - - center line
- · - · - easement line
- · - · - setback line
- · - · - underground utility
- · - · - chainlink fence
- - cable TV riser
- - telephone riser
- - fire hydrant
- - elec. transformer
- - air conditioner
- - power pole
- - manhole
- - light pole
- - gas meter
- - gas valve
- - water meter
- - water valve
- - cantonous tree
- - deciduous tree

SCALE 1"=30'

LOCATION MAP

