

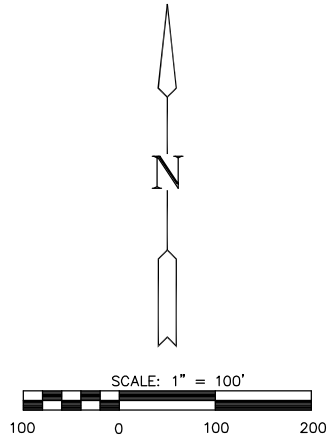
FINAL PLAT

REGENCY PARK ADDITION

AN ADDITION TO WICHITA, SEDGWICK COUNTY, KANSAS

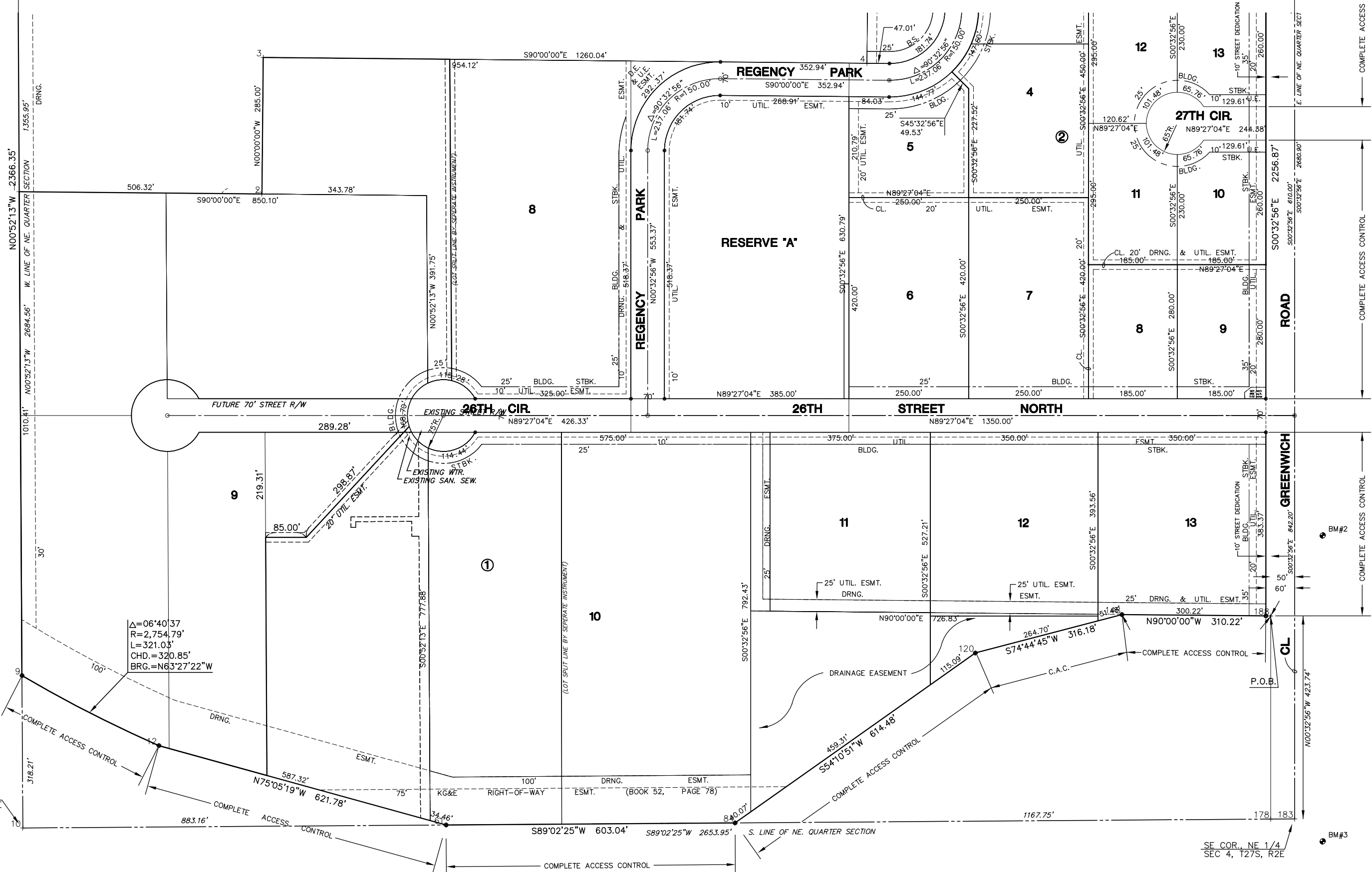
NW COR., NE 1/4
SEC 4, T27S, R2E

NE COR., NE 1/4
SEC 4, T27S, R2E



LEGEND

- = I.P.
- B.S. = BUILDING SETBACK
- U.E. = UTILITY EASEMENT
- ▨ = 10' STREET DEDICATION



SW COR., NE 1/4
SEC 4, T27S, R2E

SE COR., NE 1/4
SEC 4, T27S, R2E

COMPLETE ACCESS CONTROL

COMPLETE ACCESS CONTROL

COMPLETE ACCESS CONTROL

COMPLETE ACCESS CONTROL