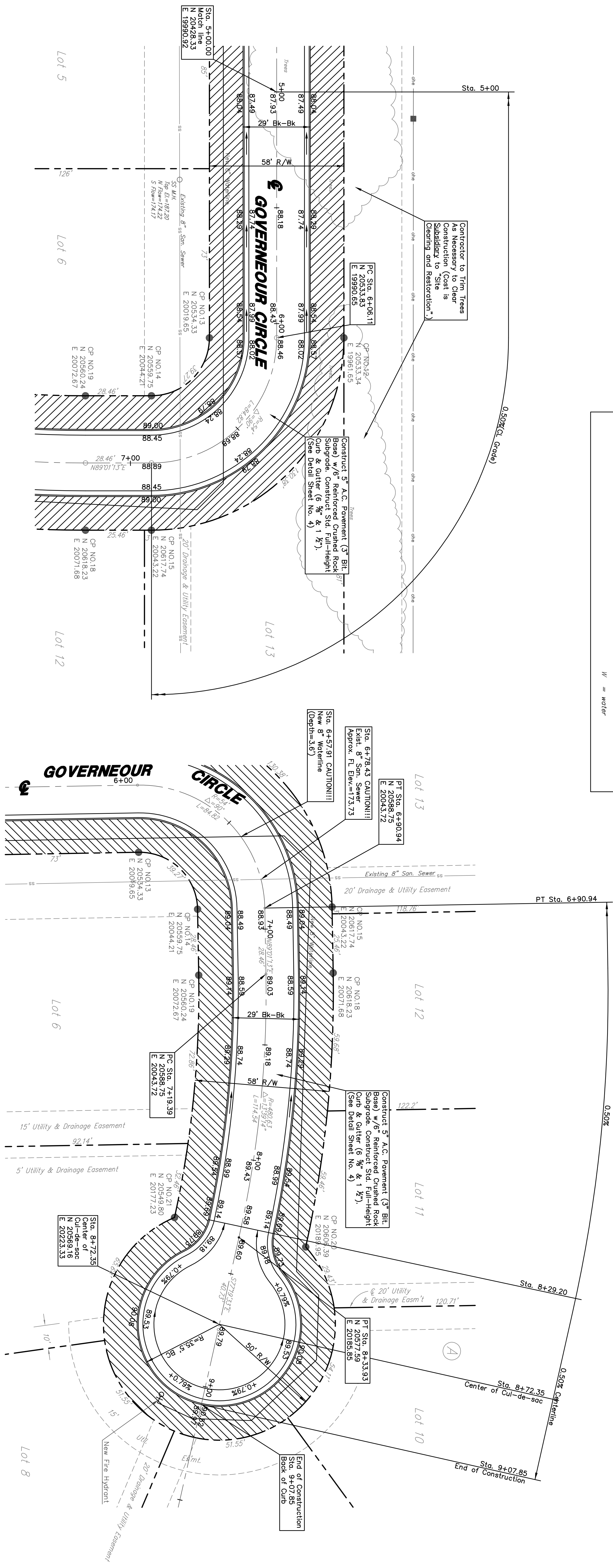
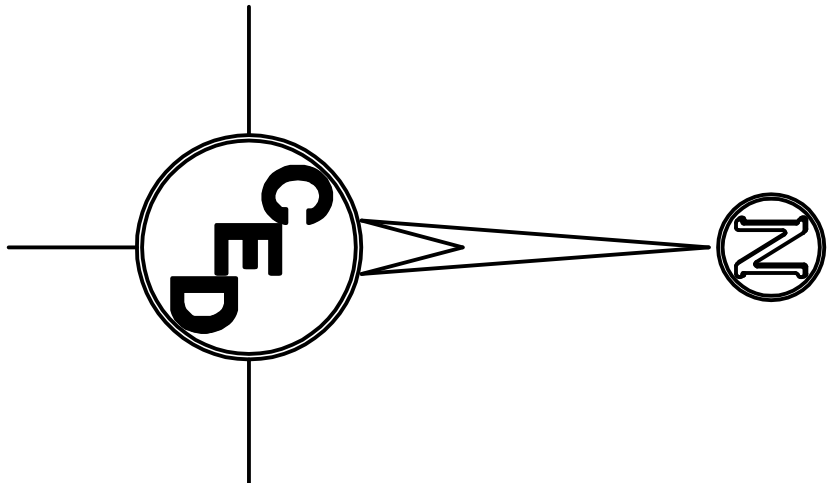
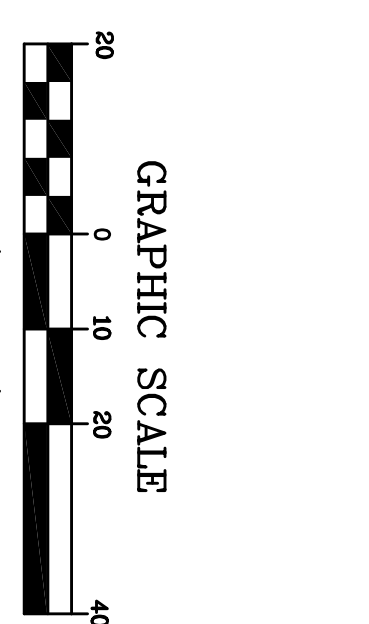


**LEGEND**

- 1/2" Ø = 1/2" iron pipe (found)
- 5/8" = 5/8" rebar (found)
- 3/4" Ø = 3/4" iron pipe (found), P.E.C. cap
- ⊕ = benchmark
- = Cable T.V.
- ⊞ = Electric Box
- X — = fence
- ⊘ = fire hydrant
- ⊘ = gas
- ⊘ = high line power pole
- ⊘ = overhead electric
- ⊘ = power pole
- SS = sanitary sewer
- SS M.H. = sanitary sewer manhole
- ⊘ = sign
- ⊘ TELE PED = telephone pedestal
- ⊘ TRANS = transformer
- ⊘ = tree
- ugt = underground telephone
- W = water



UTILITIES SHOWN REPRESENT THE BEST INFORMATION AVAILABLE FOR DESIGN. ADDITIONAL INFORMATION SHOULD BE OBTAINED FROM THE CONTRACTOR BE RESPONSIBLE FOR DETERMINING THE EXACT LOCATION, DEPTH AND SIZE OF ALL UNDERGROUND UTILITIES PRIOR TO CONSTRUCTION. THE CONTRACTOR SHALL BE LIABLE FOR ANY DAMAGE CAUSED BY THE FAILURE TO DO SO.

**SURVEY DISCLAIMER:** THIS SURVEY AND CONTOUR MAP USED IN PREPARING THIS PLAN WAS OBTAINED FROM A PUBLICLY AVAILABLE SOURCE. THE ENGINEER DOES NOT GUARANTEE THE ACCURACY OF ANY DISCREPANCIES.

**BENCHMARK:** City of Wichita Std. Disc  
Bench Mark & 3rd Street N,  
6± N. of N. Curb  
Elevation = 1377.30 N.G.V.D., 189.9 City Datum

**NOTE:** CONTRACTOR SHALL PROVIDE CONSTRUCTION ENTRANCE, HAYBALES, AND/OR SILT FENCES AS REQUIRED BY CITY OF WICHITA SOIL EROSION BEST MANAGEMENT PRACTICES (BMP'S) (SEE SHEETS 12-14).

WICHITA, SEDGWICK COUNTY, KANSAS  
**GOVERNEOUR CIRCLE**  
 KILBURNY PLAZA EAST ADDITION  
 PROJ. NO.: 20041204

**CERTIFIED ENGINEERING DESIGN, P.A.**  
 810 WEST DOUGLAS, SUITE C  
 WICHITA, KANSAS 67203  
 PH. (316)262-8808 FAX. (316)262-1669

DESIGNED: HOF  
 DRAWN: AEE  
 CHECKED: HOF

SCALE: 1"=20'  
 DATE: 06-05

SHEET 6  
 TOTAL 16