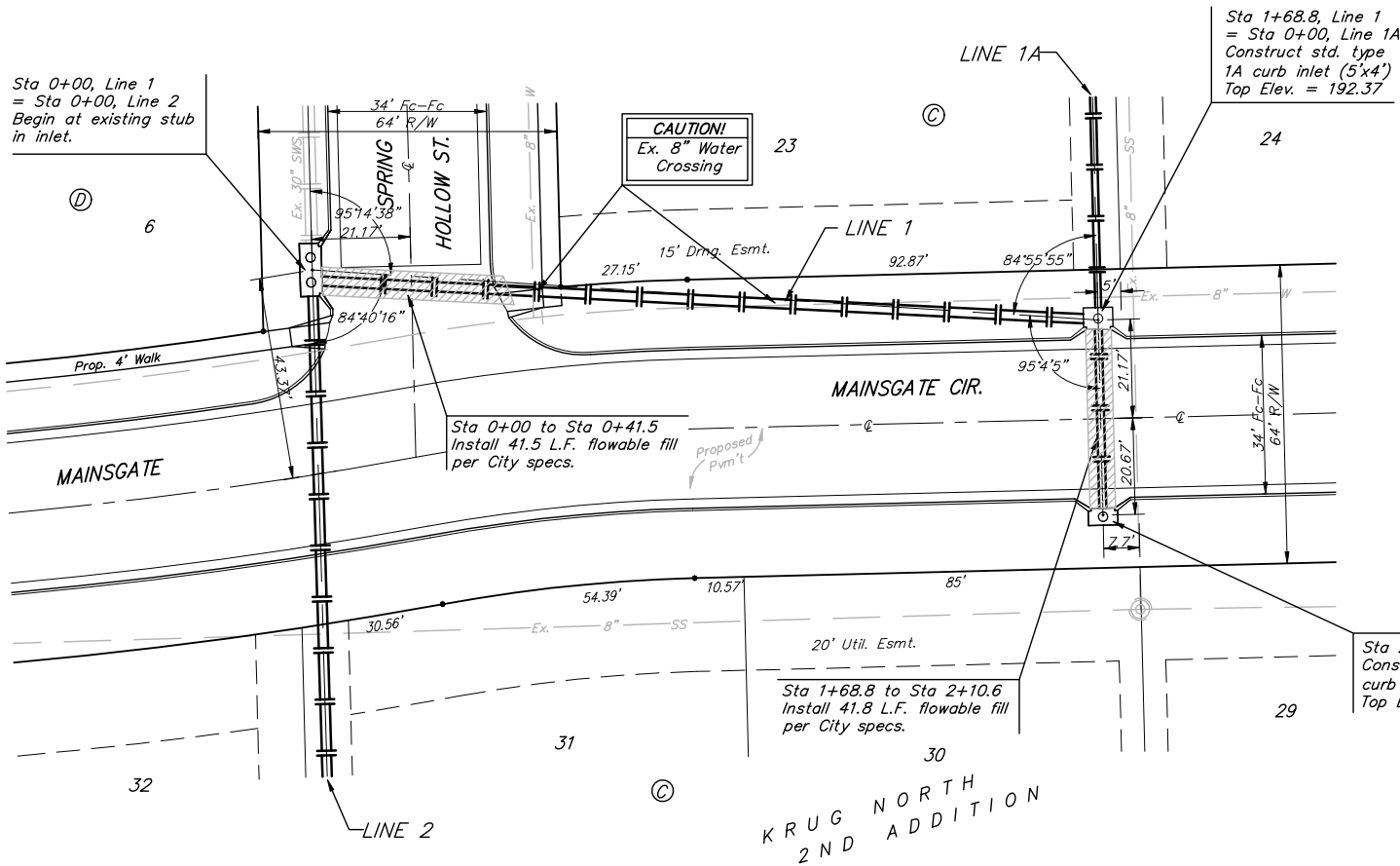


BENCHMARK:  
 BM #1: "□" Cut in middle of N headwall of RCBC on 21st St. North. 1004.3' W & 22.1' N of SE Cor., SE1/4, Sec. 2, T-27-S, R-2-E. Elev. = 173.23 City Datum

BM #2: "□" Cut at the SE corner of the intersection of Castle Rock & Castle Rock Ct., Krug North Addition. Elev. = 183.50 City Datum

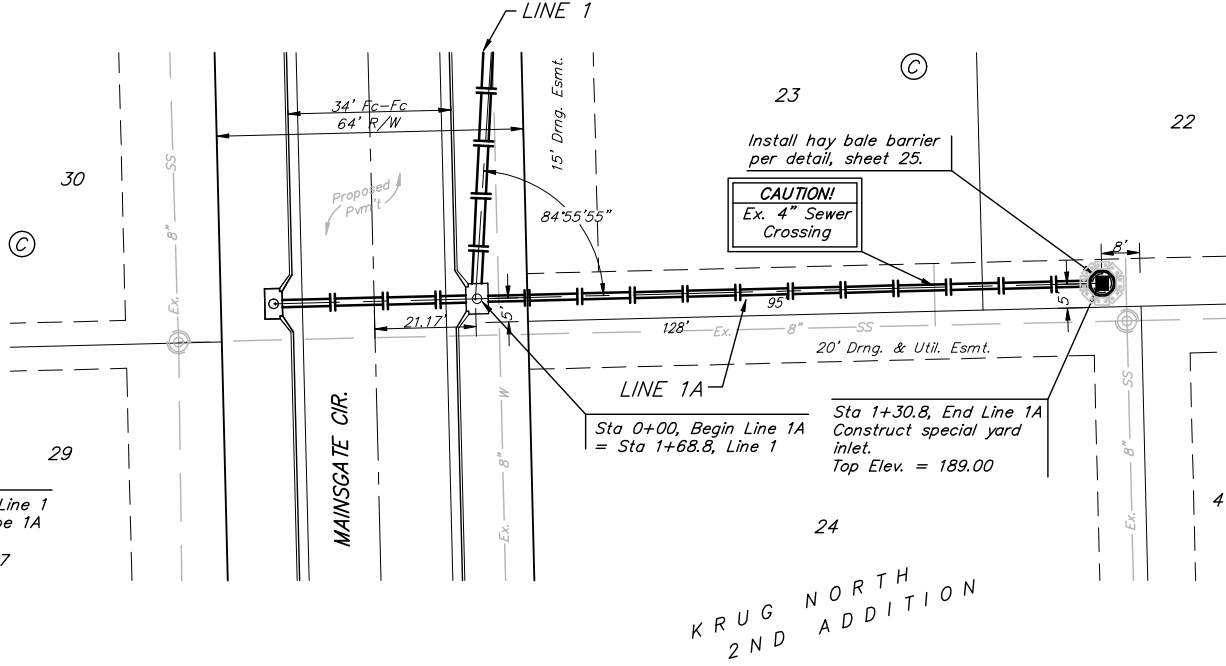
Sta 0+00, Line 1 = Sta 0+00, Line 2  
 Begin at existing stub in inlet.



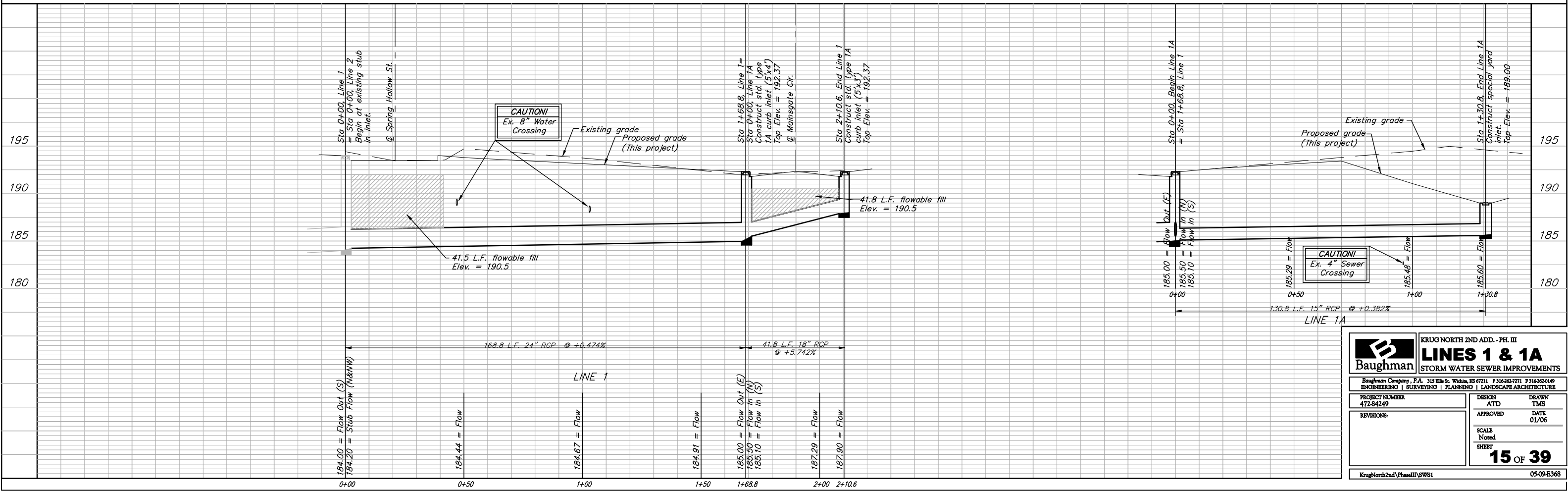
Sta 1+68.8, Line 1 = Sta 0+00, Line 1A  
 Construct std. type 1A curb inlet (5'x4')  
 Top Elev. = 192.37

Sta 2+10.6, End Line 1  
 Construct std. type 1A curb inlet (5'x3')  
 Top Elev. = 192.37

Scale: 1" = 20' Horizontal  
 1" = 5' Vertical  
 • = Iron



Sta 1+30.8, End Line 1A  
 Construct special yard inlet.  
 Top Elev. = 189.00



Sta 0+00, Line 1 = Sta 0+00, Line 2  
 Begin at existing stub in inlet.  
 @ Spring Hollow St.

CAUTION!  
 Ex. 8" Water Crossing

Sta 1+68.8, Line 1 = Sta 0+00, Line 1A  
 Construct std. type 1A curb inlet (5'x4')  
 Top Elev. = 192.37  
 @ Mainsgate Cir.

Sta 2+10.6, End Line 1  
 Construct std. type 1A curb inlet (5'x3')  
 Top Elev. = 192.37

CAUTION!  
 Ex. 4" Sewer Crossing

Sta 1+30.8, End Line 1A  
 Construct special yard inlet.  
 Top Elev. = 189.00

		<b>KRUG NORTH 2ND ADD. - PH. III</b> <b>LINES 1 &amp; 1A</b> STORM WATER SEWER IMPROVEMENTS	
		<small>Baughman Company, P.A. 315 Ellis St. Wichita, KS 67211 P 316-262-7771 F 316-262-0149          ENGINEERING   SURVEYING   PLANNING   LANDSCAPE ARCHITECTURE</small>	
PROJECT NUMBER 472-84249	DESIGN ATD	DRAWN TMS	DATE 01/06
REVISIONS:	APPROVED	SCALE Noted	SHEET <b>15 OF 39</b>
<small>KrugNorth2ndPhIII(S)WS1</small>		<small>05-09-E368</small>	