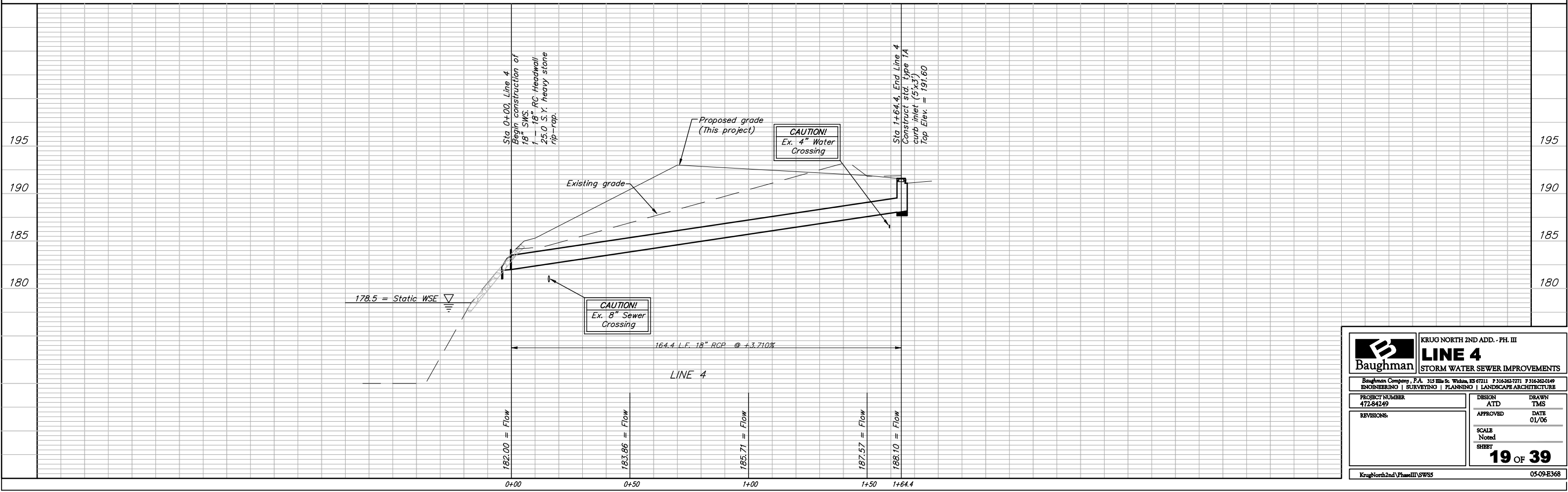
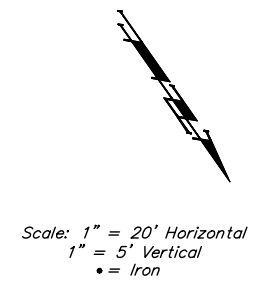
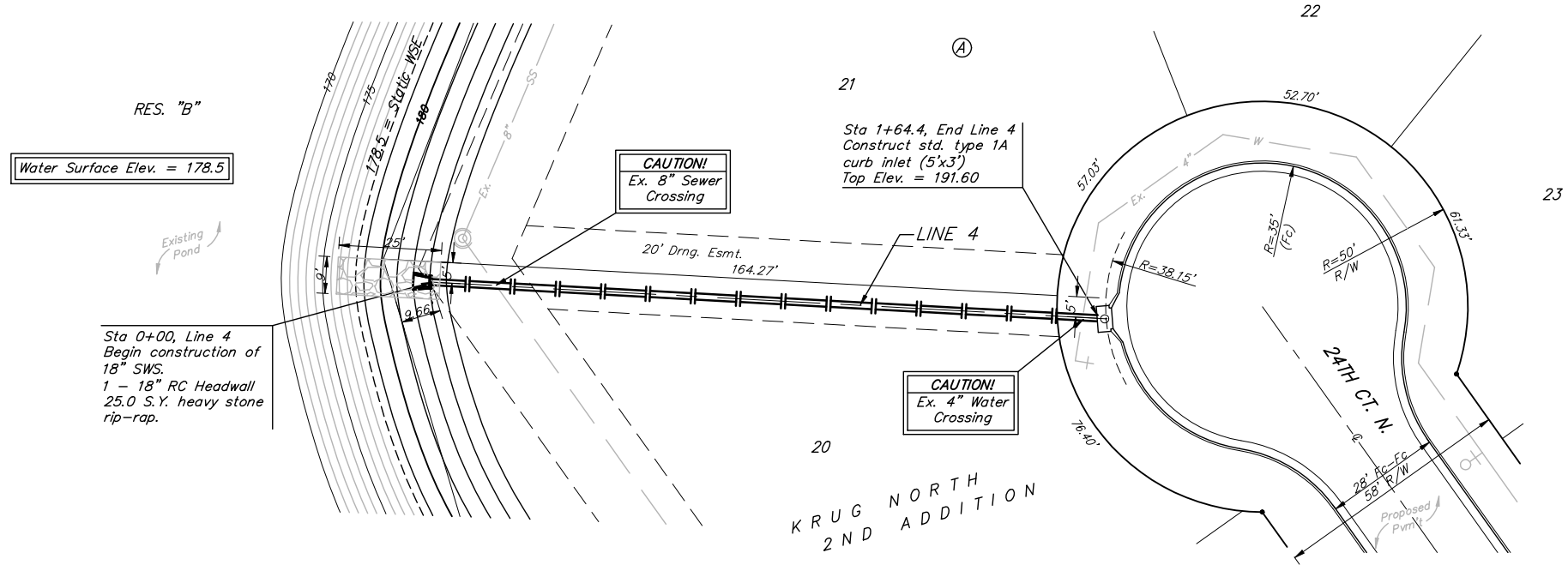


BENCHMARK:
 BM #1: "□" Cut in middle of
 N headwall of RCBC on 21st
 St. North. 1004.3' W & 22.1'
 N of SE Cor., SE1/4, Sec. 2,
 T-27-S, R-2-E.
 Elev. = 173.23 City Datum

BM #2: "□" Cut at the SE
 corner of the intersection of
 Castle Rock & Castle Rock Ct.,
 Krug North Addition.
 Elev. = 183.50 City Datum



	KRUG NORTH 2ND ADD. - PH. III LINE 4 STORM WATER SEWER IMPROVEMENTS	
	<small>Baughman Company, P.A. 315 Ellis St. Wilkes, KS 67111 P 316-362-7771 F 316-362-0149 ENGINEERING SURVEYING PLANNING LANDSCAPE ARCHITECTURE</small>	
PROJECT NUMBER 472-84249	DESIGN ATD	DRAWN TMS
REVISIONS:	APPROVED	DATE 01/06
	SCALE Noted	SHEET 19 OF 39
<small>KrugNorth2ndVPhaseIII/SWS5</small>		<small>05-09-E368</small>