

BENCHMARKS:
 BM #1: "X" on the West End of the Steel Casing Pipe at the Railroad Crossing South of 37th Street North Sta. 25+90, 41' Rt. Elev. = 1336.58 MSL

BM #2: Steel T-Post Driven 4' Deep Sta. 18+00, 25' Rt. Elev. = 1337.73 MSL

BM #3: "□" in the Concrete Footing of the SBC Pedestal in the South West Corner of 37th Street North and Tyler Road Sta. 8+56, 95' Rt. Elev. = 1342.17 MSL

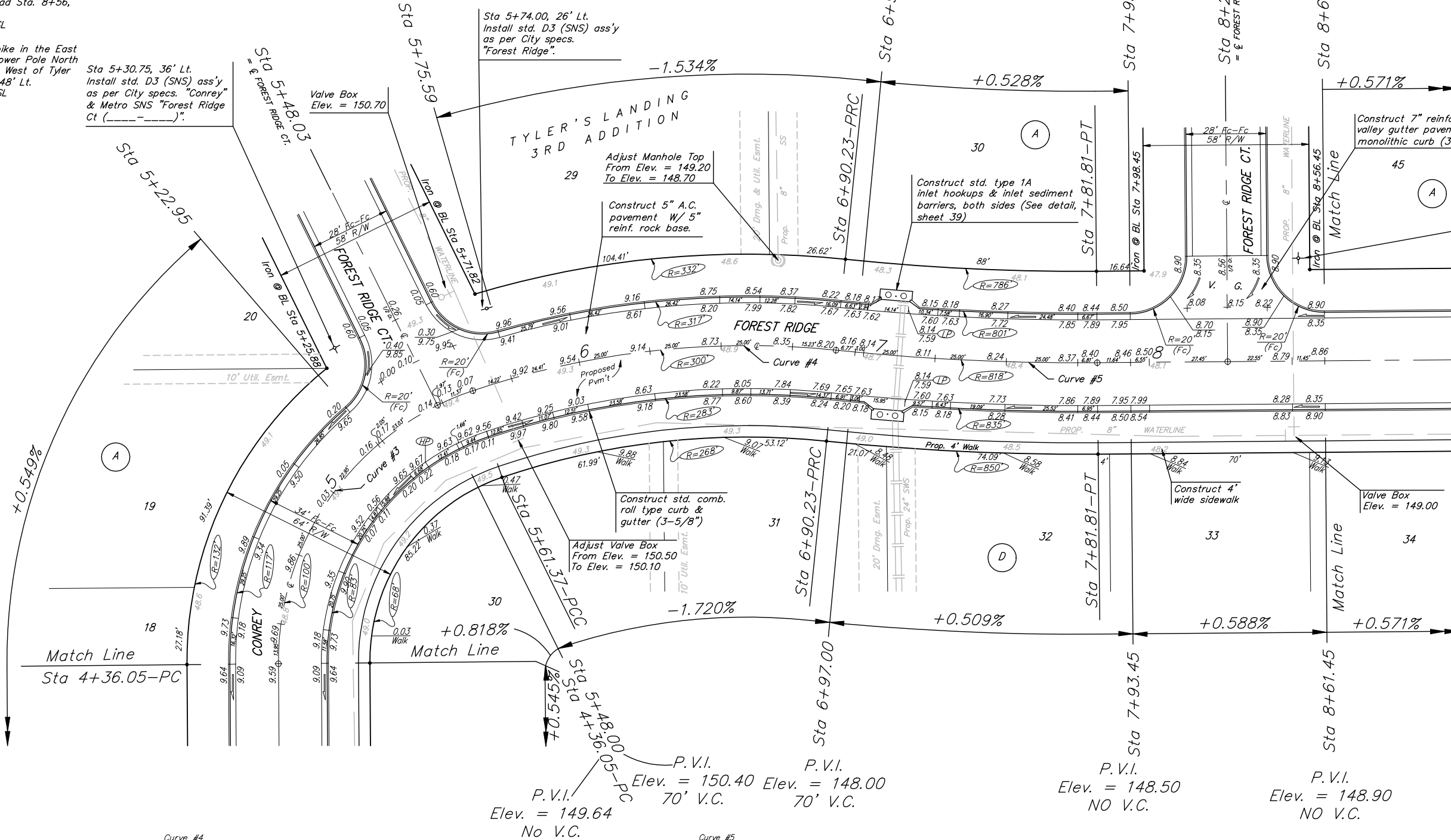
BM #4: Railroad Spike in the East Face of the 2nd Power Pole North of 37th Street and West of Tyler Road Sta. 94+24, 48' Lt. Elev. = 1342.85 MSL

Curve #3
 Curve Data Based on Centerline
 Rad. = 100' Delta = 71° 48' 18" Tangent = 72.39'
 Arc = 125.32' L.C. = 117.28' Def/Ft. = 17.18920 Min.

| Station | Arc | FACE CHORD LENGTHS | | Defl. | T. Defl. |
|---------|--------|--------------------|--------|----------|-----------|
| | | 8' Lt. | 8' Rt. | | |
| 4+36.05 | - | - | - | 0°00'00" | 0°00'00" |
| 4+50.00 | 13.95' | 17.42' | 10.45' | 3°59'47" | 3°59'47" |
| 4+75.00 | 25.00' | 31.17' | 18.70' | 7°09'44" | 11°09'31" |
| 5+00.00 | 25.00' | 31.17' | 18.70' | 7°09'44" | 18°19'15" |
| 5+22.95 | 22.95' | 28.63' | 17.18' | 6°34'29" | 24°53'44" |
| 5+48.03 | 25.08' | 31.27' | 18.76' | 7°11'06" | 32°04'51" |
| 5+61.37 | 13.34' | 16.66' | 10.00' | 3°49'18" | 35°54'09" |

P.V.I.
 Elev. = 148.00
 70' V.C.

Scale: 1" = 20'
 • = Iron



NOTE: ROLL TYPE CURB & GUTTER TO BE CONSTRUCTED ON THE PAVEMENT SHOWN ON THIS SHEET. TOP OF CURB ELEVATIONS ARE GIVEN FOR FULL HEIGHT CURB.

Curve #4
 Curve Data Based on Centerline
 Rad. = 300' Delta = 24° 36' 35" Tangent = 65.44'
 Arc = 128.86' L.C. = 127.87' Def/Ft. = 5.72941 Min.

| Station | Arc | FACE CHORD LENGTHS | | Defl. | T. Defl. |
|---------|--------|--------------------|--------|----------|-----------|
| | | 8' Lt. | 8' Rt. | | |
| 5+61.37 | - | - | - | 0°00'00" | 0°00'00" |
| 5+75.59 | 14.22' | 15.40' | 13.03' | 1°21'28" | 1°21'28" |
| 6+00.00 | 24.41' | 26.44' | 22.37' | 2°19'51" | 3°41'19" |
| 6+25.00 | 25.00' | 27.07' | 22.91' | 2°23'14" | 6°04'34" |
| 6+50.00 | 25.00' | 27.07' | 22.91' | 2°23'14" | 8°27'48" |
| 6+75.00 | 25.00' | 27.07' | 22.91' | 2°23'14" | 10°51'02" |
| 6+90.23 | 15.23' | 16.50' | 13.96' | 1°27'15" | 12°18'17" |

Curve #5
 Curve Data Based on Centerline
 Rad. = 818' Delta = 6°24'54" Tangent = 45.84'
 Arc = 91.58' L.C. = 91.54' Def/Ft. = 2.10144 Min.

| Station | Arc | FACE CHORD LENGTHS | | Defl. | T. Defl. |
|---------|--------|--------------------|--------|----------|----------|
| | | 8' Lt. | 8' Rt. | | |
| 6+90.23 | - | - | - | 0°00'00" | 0°00'00" |
| 6+97.00 | 6.77' | 6.56' | 6.98' | 0°14'14" | 0°14'14" |
| 7+00.00 | 3.00' | 2.91' | 3.09' | 0°06'18" | 0°20'32" |
| 7+25.00 | 25.00' | 24.24' | 25.76' | 0°52'32" | 1°13'04" |
| 7+50.00 | 25.00' | 24.24' | 25.76' | 0°52'32" | 2°05'36" |
| 7+75.00 | 25.00' | 24.24' | 25.76' | 0°52'32" | 2°58'08" |
| 7+81.81 | 6.81' | 6.60' | 7.02' | 0°14'19" | 3°12'27" |

Adjust water valve boxes as needed to grade. Incidental to 'Site Clearing and Restoration'.

Contractor to remove existing trees, fence, etc. as needed to complete paving project. Removal shall be incidental to bid item 'Site Clearing and Restoration'.

Baughman Tyler's Landing 3rd Addition - Phase I
Forest Ridge
 STA 4+36.05 TO STA 8+61.45

Engineering | Surveying | Planning | Landscape Architecture

PROJECT NUMBER: 412-84262
 REVISIONS:

DESIGN: ABO
 DRAWN: JWH/TMS
 APPROVED: DATE: 08/05
 SCALE: Noted
 SHEET: 7 OF 52

tylers landing 3rd/rev1.dwg 05-07-E283