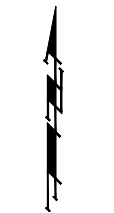


BENCHMARKS:
 BM #1: "X" on the West End of the Steel Casing Pipe at the Railroad Crossing South of 37th Street North Sta. 25+90, 41' Rt. Elev. = 1336.58 MSL

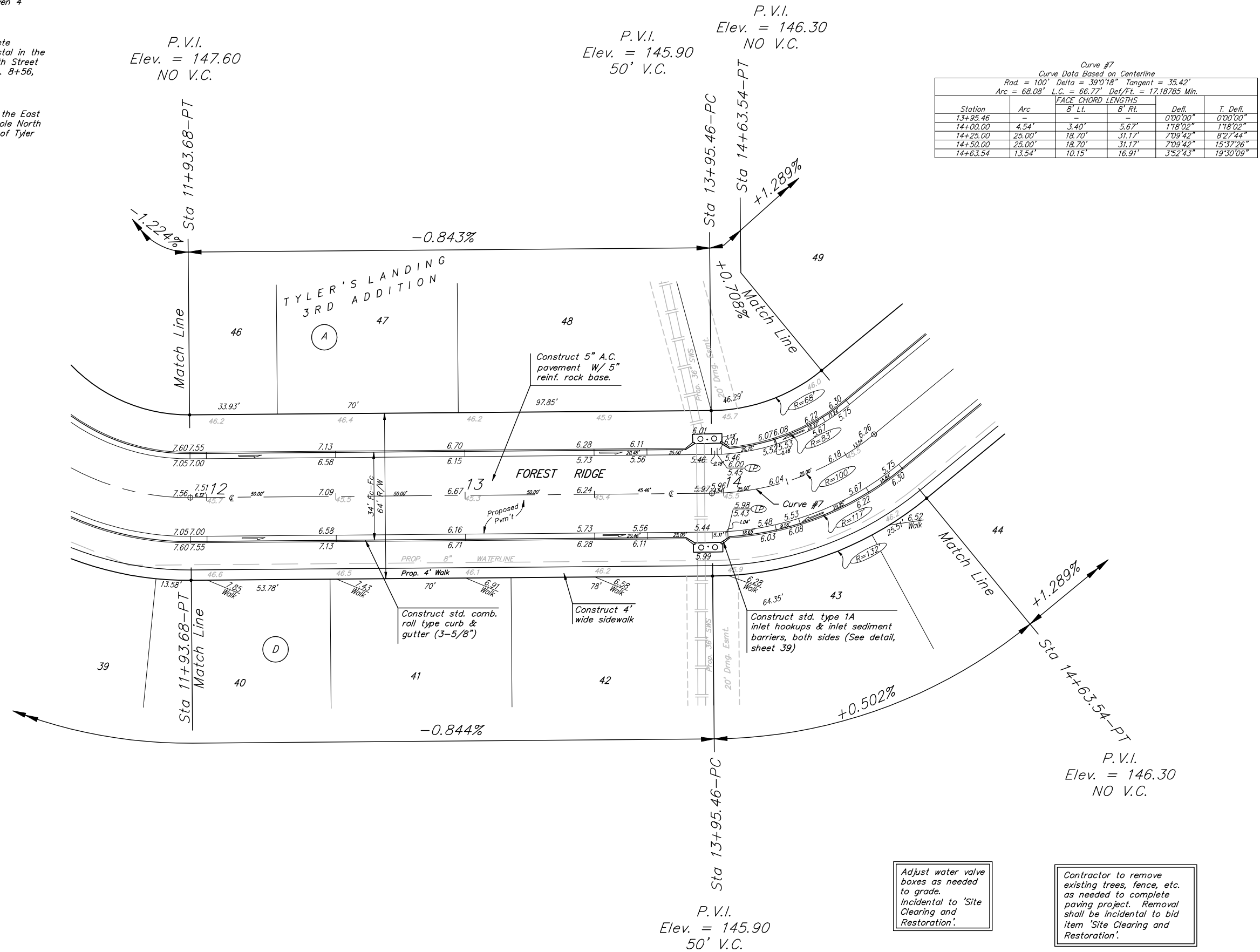
BM #2: Steel T-Post Driven 4' Deep Sta. 18+00, 25' Rt. Elev. = 1337.73 MSL

BM #3: "□" in the Concrete Footing of the SBC Pedestal in the South West Corner of 37th Street North and Tyler Road Sta. 8+56, 95' Rt. Elev. = 1342.17 MSL

BM #4: Railroad Spike in the East Face of the 2nd Power Pole North of 37th Street and West of Tyler Road Sta. 94+24, 48' Lt. Elev. = 1342.85 MSL



Scale: 1" = 20'
 • = Iron



Station	Arc	FACE CHORD LENGTHS		Defl.	T. Defl.
		8' Lt.	8' Rt.		
13+95.46	-	-	-	0'00"00"	0'00"00"
14+00.00	4.54'	3.40'	5.67'	1'18"02"	1'18"02"
14+25.00	25.00'	18.70'	31.17'	7'09"42"	8'27"44"
14+50.00	25.00'	18.70'	31.17'	7'09"42"	15'37"26"
14+63.54	13.54'	10.15'	16.91'	3'52"43"	19'30"09"

NOTE: ROLL TYPE CURB & GUTTER TO BE CONSTRUCTED ON THE PAVEMENT SHOWN ON THIS SHEET. TOP OF CURB ELEVATIONS ARE GIVEN FOR FULL HEIGHT CURB.

Adjust water valve existing trees, fence, etc. as needed to complete paving project. Removal shall be incidental to bid item 'Site Clearing and Restoration'.

Contractor to remove existing trees, fence, etc. as needed to complete paving project. Removal shall be incidental to bid item 'Site Clearing and Restoration'.

Baughman Tyler's Landing 3rd Addition - Phase I
Forest Ridge
 STA 11+93.68 TO STA 14+63.54

Baughman Company, P.A. 315 8th St. Wichita, KS 67211 P 316-262-1771 F 316-262-0149
 ENGINEERING | SURVEYING | PLANNING | LANDSCAPE ARCHITECTURE

PROJECT NUMBER 472-84262	DESIGN ABO	DRAWN JWH/TMS
REVISIONS:	APPROVED	DATE 08/05
	SCALE Noted	SHEET 9 OF 52

tylers landing 3rd/pt1.dwg 05-07-E283