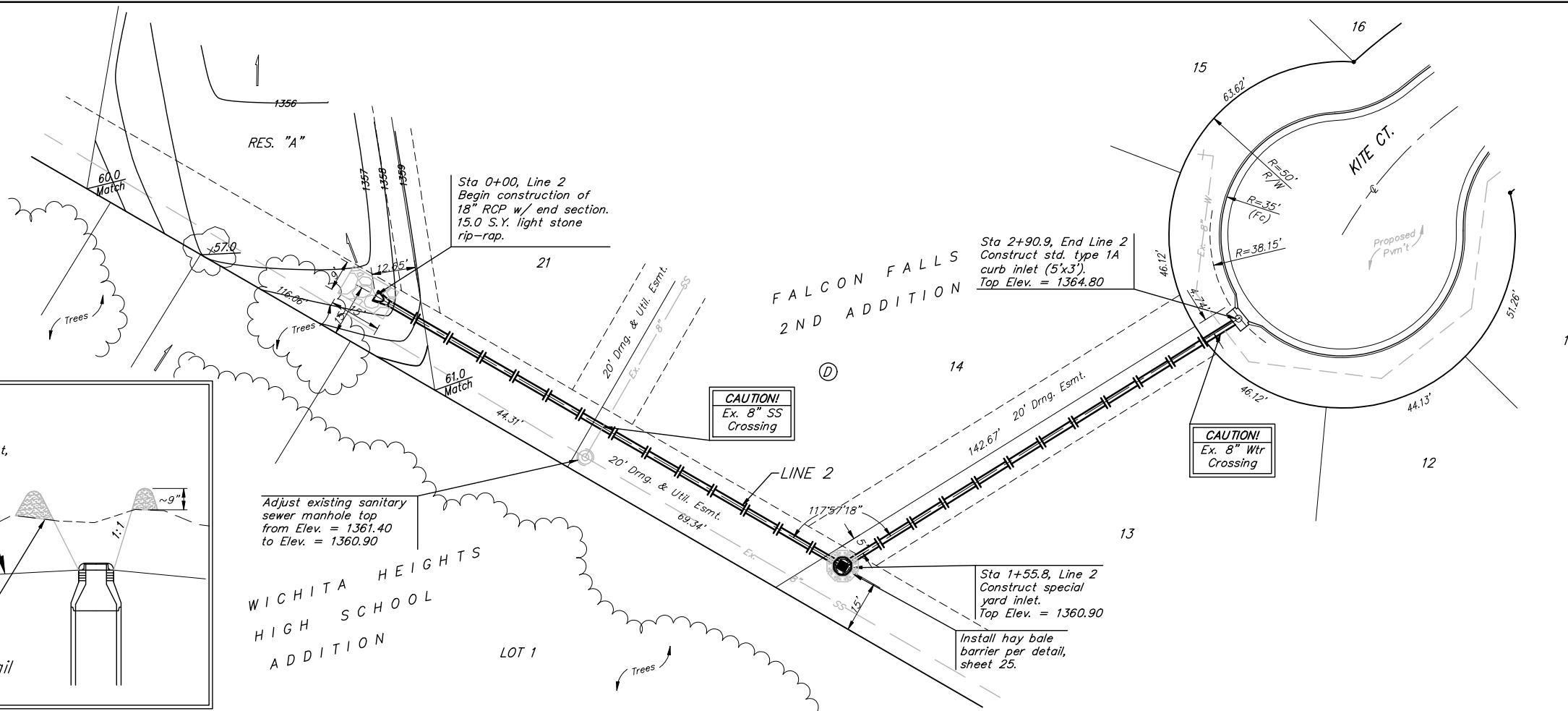
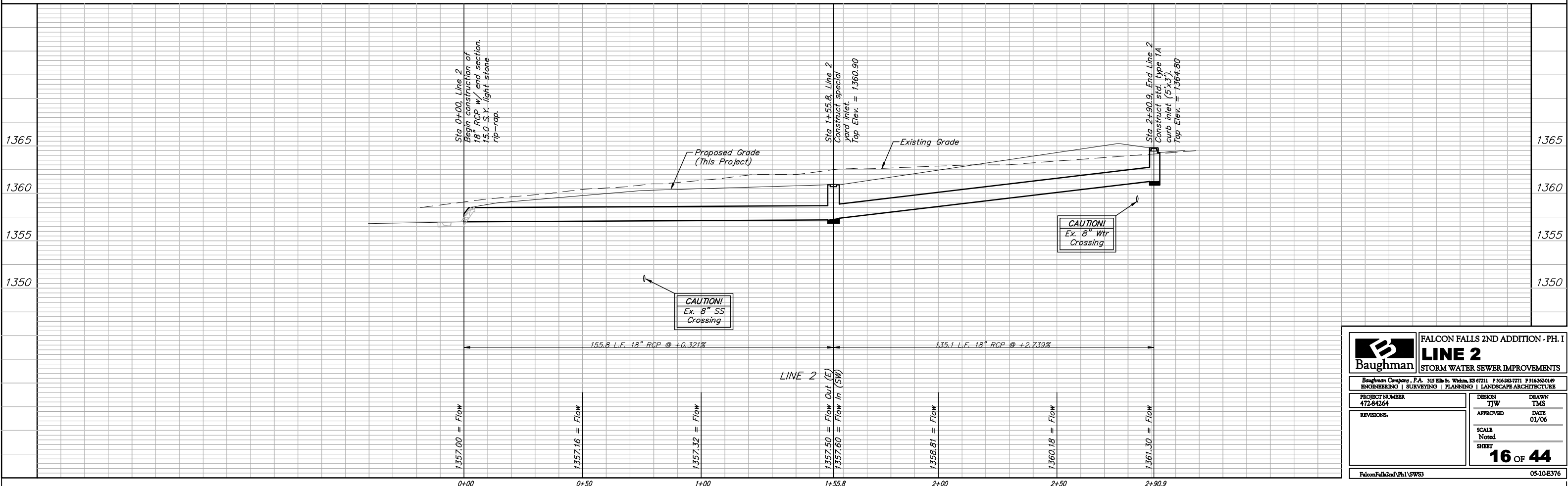
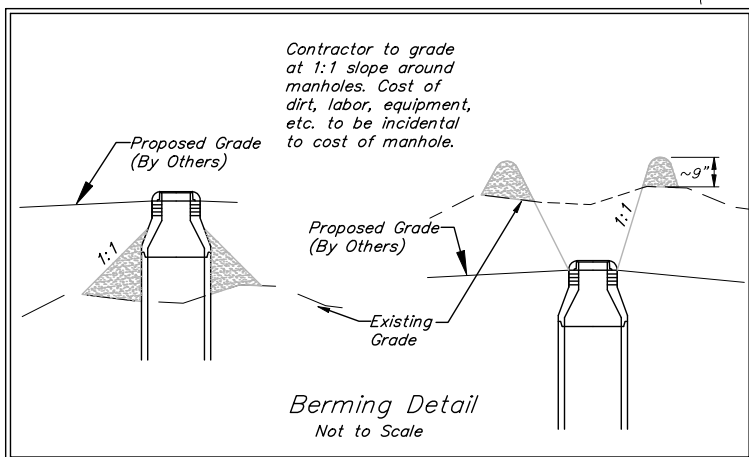


BENCHMARKS:
 BM #1: "□" CL face of catch basin, west side of Lot 4, Block 5, Falcon Falls Addition. Elev. = 1352.47 MSL

BM #2: "□" south end of the south curb return at Kite and Peregrine, Falcon Falls Addition. Elev. = 1359.85 MSL



Scale: 1" = 20' Horizontal
 1" = 5' Vertical
 • = Iron



| | | |
|---|--|--|
| | FALCON FALLS 2ND ADDITION - PH. I LINE 2 STORM WATER SEWER IMPROVEMENTS | |
| | <small>Baughman Company, P.A. 315 Ellis St. Wichita, KS 67211 P 316-262-7771 F 316-262-0149 ENGINEERING SURVEYING PLANNING LANDSCAPE ARCHITECTURE</small> | |
| <small>PROJECT NUMBER 472-84264</small> | <small>DESIGN TJW</small> | <small>DRAWN TMS</small> |
| <small>REVISIONS</small> | <small>APPROVED</small> | <small>DATE 01/06</small> |
| <small>SCALE Noted</small> | | <small>SHEET 16 OF 44</small> |
| <small>Falcon Falls 2nd Ph. I SWS3</small> | | <small>05-10-E376</small> |