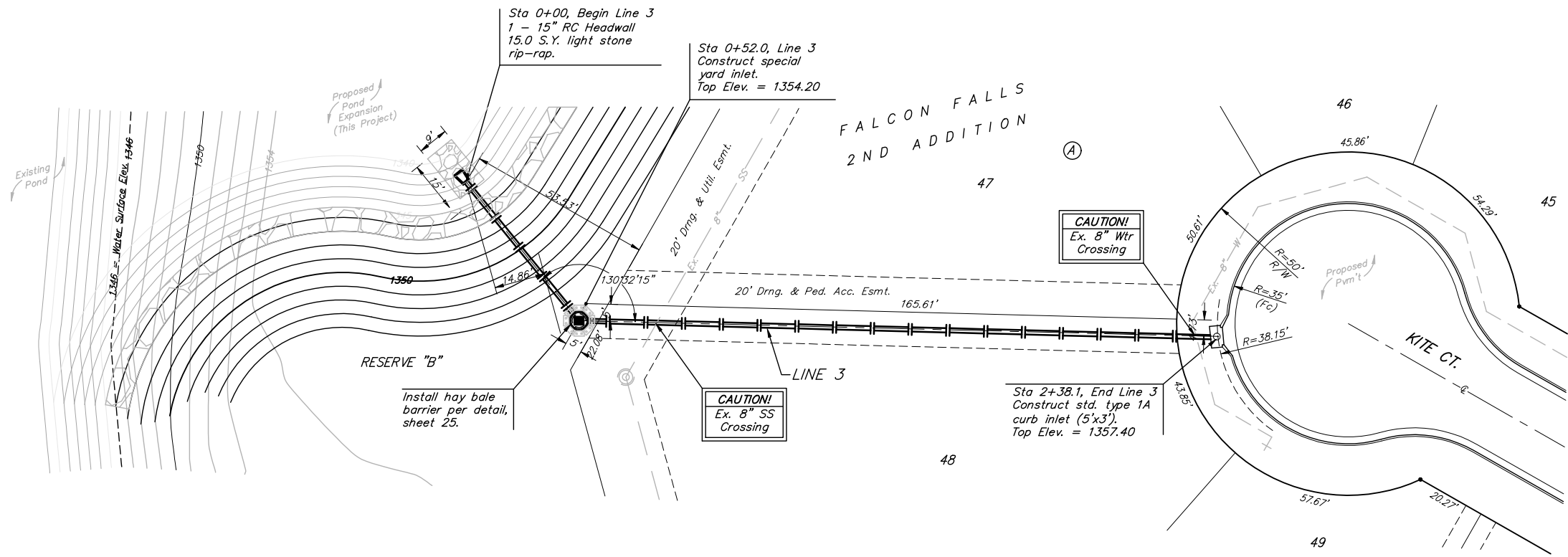
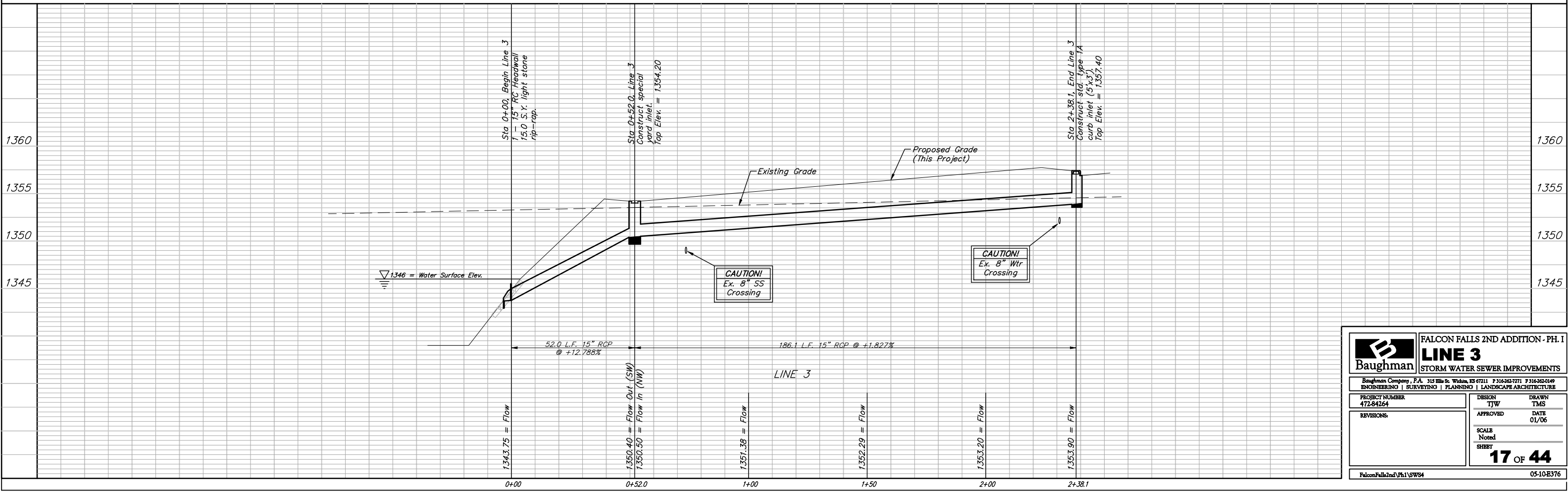


BENCHMARKS:
 BM #1: "□" CL face of catch basin, west side of Lot 4, Block 5, Falcon Falls Addition. Elev. = 1352.47 MSL
 BM #2: "□" south end of the south curb return at Kite and Peregrine, Falcon Falls Addition. Elev. = 1359.85 MSL



Scale: 1" = 20' Horizontal
 1" = 5' Vertical
 • = Iron



	FALCON FALLS 2ND ADDITION - PH. I LINE 3 STORM WATER SEWER IMPROVEMENTS	
	<small>Baughman Company, P.A. 315 Ellis St. Wichita, KS 67211 P 316-262-7771 F 316-262-0149 ENGINEERING SURVEYING PLANNING LANDSCAPE ARCHITECTURE</small>	
<small>PROJECT NUMBER 472-84264</small>	<small>DESIGN TJW</small>	<small>DRAWN TMS</small>
<small>REVISIONS</small>	<small>APPROVED</small>	<small>DATE 01/06</small>
<small>SCALE Noted</small>		<small>SHEET 17 OF 44</small>
<small>FalconFalls2nd\Ph.I\SW#4</small>		<small>05-10-E376</small>