

WATER DISTRIBUTION SYSTEM

BRENTWOOD SOUTH 3RD ADDITION

PROJECT NO. 448-90368

OCA # 735407

GENERAL NOTES

Contractor will be required to provide a minimum advance notice of twenty-four (24) hours to utility companies prior to starting any excavation as follows:

Kansas One-Call 687-2470

The Contractor must notify the following in case of an emergency:

Cox Communications	262-0661
Kansas Gas Service	383-8600
Westar	383-8600
Aquila Net	1-800-303-0357
SBC	1-800-286-8313
City of Wichita Water Department	262-6000
City of Wichita Sewer Maintenance	262-6000

1. Underground utility service lines and overhead utility pole lines are to be adjusted as necessary by others prior to construction unless the plans specifically call for their adjustment by the Contractor or unless the plans specifically identify a utility to be adjusted by its owner during construction. Existing utilities and their location, as shown on the plans, represent the best information obtainable for design. Location information has been obtained from the various utility companies and is either from company record drawings or company-provided field locations. The Contractor will be required to work around existing utilities within the right-of-way which do not conflict with proposed construction.

2. Rubble from the removal of miscellaneous structures and excess excavation which is to be wasted shall be disposed of on sites to be provided by the Contractor. These sites shall be approved by the Engineer as to suitability, appearance and site location. Locations that, in the opinion of the Engineer, will leave an unsightly appearance will not be approved.

3. All disposal sites must be approved by the Kansas Department of Health and Environment. Material either stockpiled or disposed of in a flood plain would require a Kansas State Board of Agriculture permit. Any material dumped in waters of the United States or wetlands is subject to U.S. Corps permitting regulations. Any material buried or stockpiled beyond approved of Engineers construction limits would require additional archeological investigations unless buried in a previously approved borrow location.

4. The Contractor shall give all property owners and/or tenants of developed property directly abutting the construction of this project a minimum of ten (10) days advance notice prior to start of construction.

5. The Contractor shall seed, fertilize and mulch all disturbed areas per City of Wichita Specifications upon completion of construction. Incidental to the bid item for "Project Seeding".

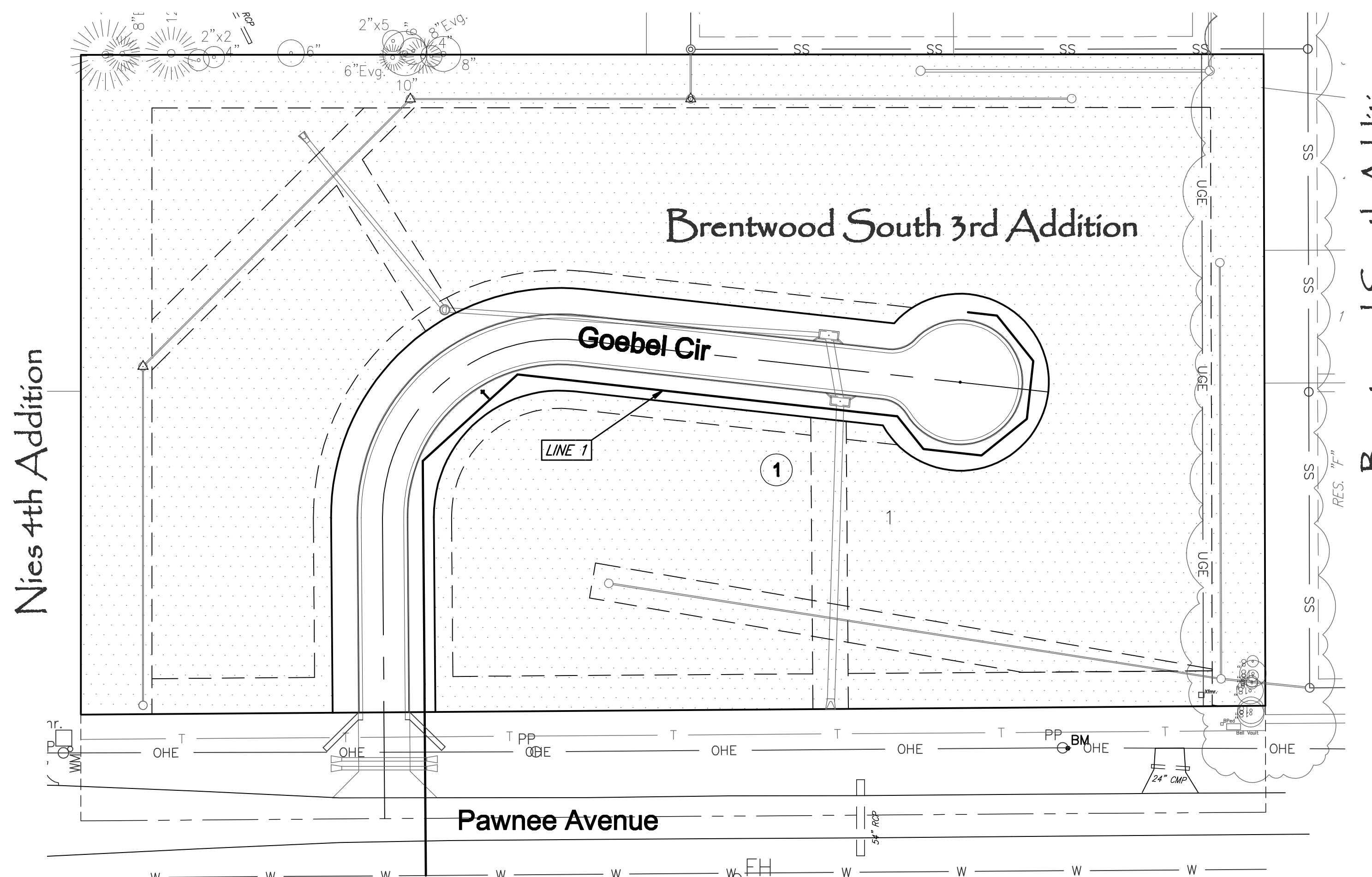
6. There is dirt available on site from the easement grading with the sanitary sewer project (800 cu yds). This dirt may be used as protective fill for this project.

7. Developer Contact: Steve Miller 259-2377

8. The Contractor must contact Jason Edwards with ATT at 268-2008 prior to excavation in the area of the existing ATT Fiber Optic Line.

Sedgwick County
East Yard Addition

Brentwood South
2nd Addition



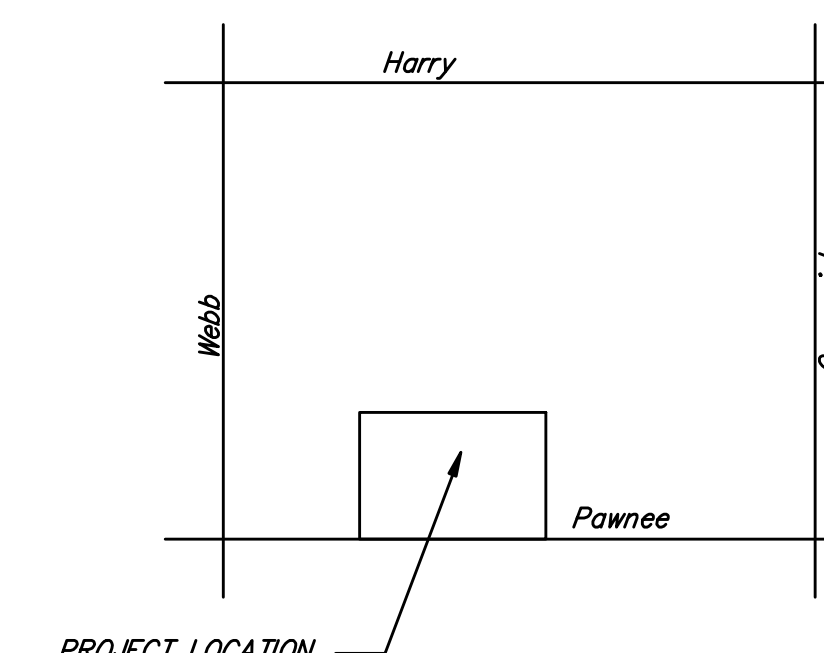
BENCH MARK

BENCH MARK: COW BENCHMARK AT THE SOUTHEAST CORNER OF THE INTERSECTION OF CRANBROOK AND SKINNER ELEV.=1334.02 (NGVD29)

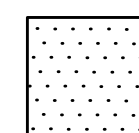
ON SITE BENCH MARK: R.R. SPIKE ON EAST FACE OF POWER POLE 1,215 FEET EAST AND 46 FEET NORTH OF THE S.W. CORNER, SEC. 33, T27S, R2E ELEV.=1388.99 (NGVD29)

Index of Sheets

1. TITLE SHEET
2. WATER CONNECTION DETAIL
3. PLAN/PROFILE
4. EROSION CONTROL DETAIL
- 5-7. BMP DETAILS
8. COORDINATE MAP
9. FINAL PLAT



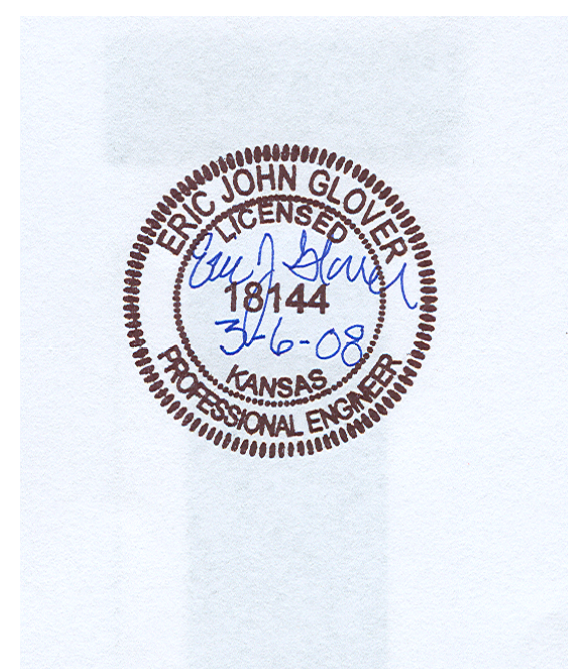
VICINITY MAP



IMPROVEMENT DISTRICT



Scale: 1" = 50'



CITY OF WICHITA, KANSAS
JAMES ARMOUR, P.E. - CITY ENGINEER