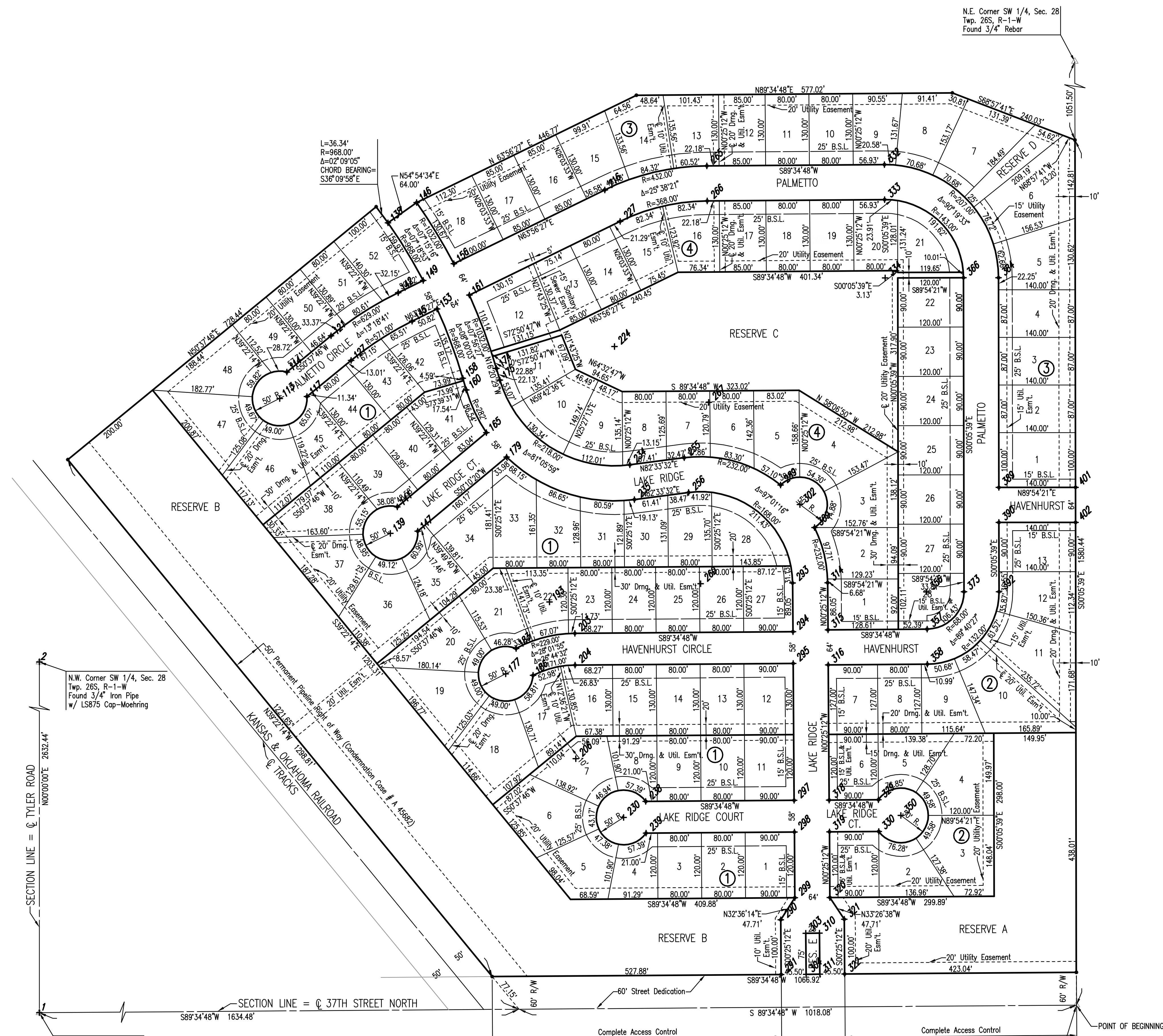
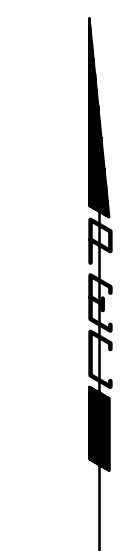


DSNR: BJB OPER: BJS SCALE: 1"=100.00
 C:\2005\050660\000\050660-000-C-PLAT 06-13-2005 03:14:34 pm



AVALON PARK

AN ADDITION TO WICHITA SEDGWICK COUNTY, KANSAS



SCALE: 1" = 100'
 • = 3/4" IRON PIPE W/PEC CAP UNLESS OTHERWISE NOTED

COORDINATE LIST		
Pl.#	NORTHING	EASTING
1	10000.0000	10000.0000
2	12632.4400	10000.0000
100	10892.2944	10603.0777
113	11127.8237	11197.4559
114	11176.0793	11210.5477
117	11131.2418	11247.3389
121	11242.2711	11291.2155
127	11197.4335	11328.0068
138	11448.7691	11395.1383
139	10881.4792	11399.5929
141	10929.8377	11412.2992
142	11321.0725	11413.8918
145	11268.9687	11439.3711
146	11485.5608	11447.5059
147	10885.2953	11449.4471
149	11343.3960	11459.5422
153	11291.2922	11485.0215
156	11374.1790	11515.6627
158	11164.6528	11531.9722
160	11143.4150	11538.1993
161	11316.6852	11543.7777
165	11065.3721	11574.8126
174	11182.6600	11593.3867
175	11161.4221	11599.6138
177	10624.7960	11610.2133
179	11020.8296	11611.9605
183	10671.0948	11629.0924
186	10621.8957	11660.1291
193	10756.0158	11690.2104
203	10698.7480	11736.5142
204	10640.7495	11736.9394
206	10469.7541	11738.1929
216	11508.8601	11791.0783
224	11222.7590	11808.8070
227	11451.3662	11819.1933
230	10362.3914	11825.5284
234	11006.5950	11837.0399
235	10943.1340	11845.3285
238	10391.6892	11866.0455
239	10333.6908	11866.4707
255	11019.5310	11936.0834
256	10956.0699	11944.3719
260	10789.4848	11966.1295
265	11552.7650	11977.6884
266	11488.7667	11978.1575
267	11120.7766	11980.8551
289	10969.6449	12112.3018
290	10175.4910	12112.6342
291	10075.4937	12113.3672
293	10790.7163	12134.1250
294	10701.6675	12134.7777
295	10643.6690	12135.2029
297	10393.6757	12137.0355
298	10335.6773	12137.4606
299	10215.6805	12138.3403
302	10934.1417	12147.5086
303	10150.8252	12158.3162
304	10075.8272	12158.8660
309	10891.9195	12174.2908
310	10151.0085	12183.3155
311	10076.0105	12183.8653
314	10791.1854	12198.1232
315	10705.1365	12198.7540
316	10641.1382	12199.2232
318	10394.1449	12201.0337
319	10336.1464	12201.4589
320	10216.1497	12202.3385
321	10176.3413	12228.6311
322	10076.3440	12229.3641
329	10394.8046	12291.0313
330	10336.8062	12291.4565
332	11555.1408	12301.7841
333	11491.1425	12302.2533
334	11348.1464	12303.3015
350	10366.1039	12331.9736
356	10774.4614	12379.2452
357	10706.4633	12379.7436
358	10642.4650	12380.2128
366	11348.3816	12446.3013
373	10774.5733	12447.2451
384	11348.4868	12510.3012
389	10965.2325	12510.9316
390	10901.2326	12511.0369
392	10774.6785	12511.2450
401	10965.4628	12650.9314
402	10901.4629	12651.0367

No.	Revision	By	Date
AVALON PARK-PHASE 5			
PLAT			
JAMES L. ARMOUR, P.E.-CITY ENGINEER CITY OF WICHITA PROJECT NO. 472-83839			
Professional Engineering Consultants, P.A. 303 S. TOPKA • WICHITA, KANSAS 67202 316-262-2691 • FAX 316-262-3003			
Designed by	BDB, BLB	Job No.	35-05060-000
Drawn by	BJS	Date	February 2005
			Sht. 3 of 22

