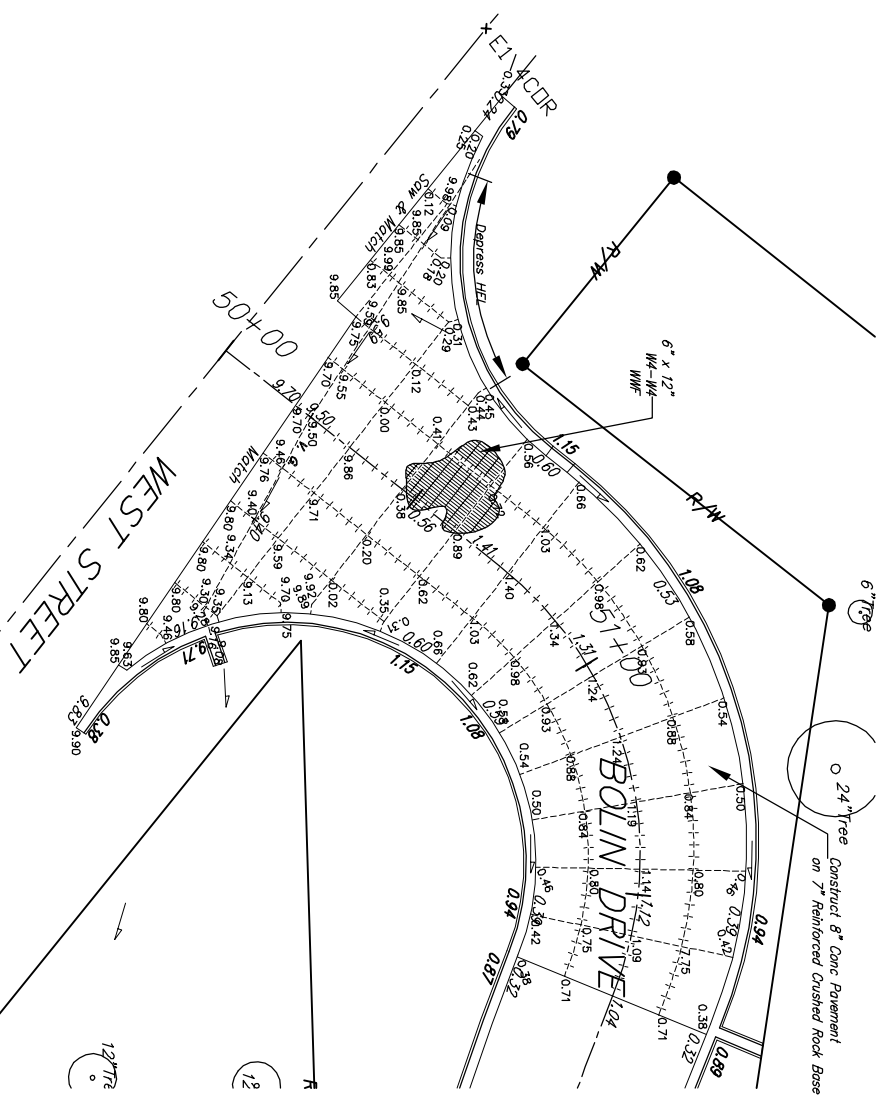
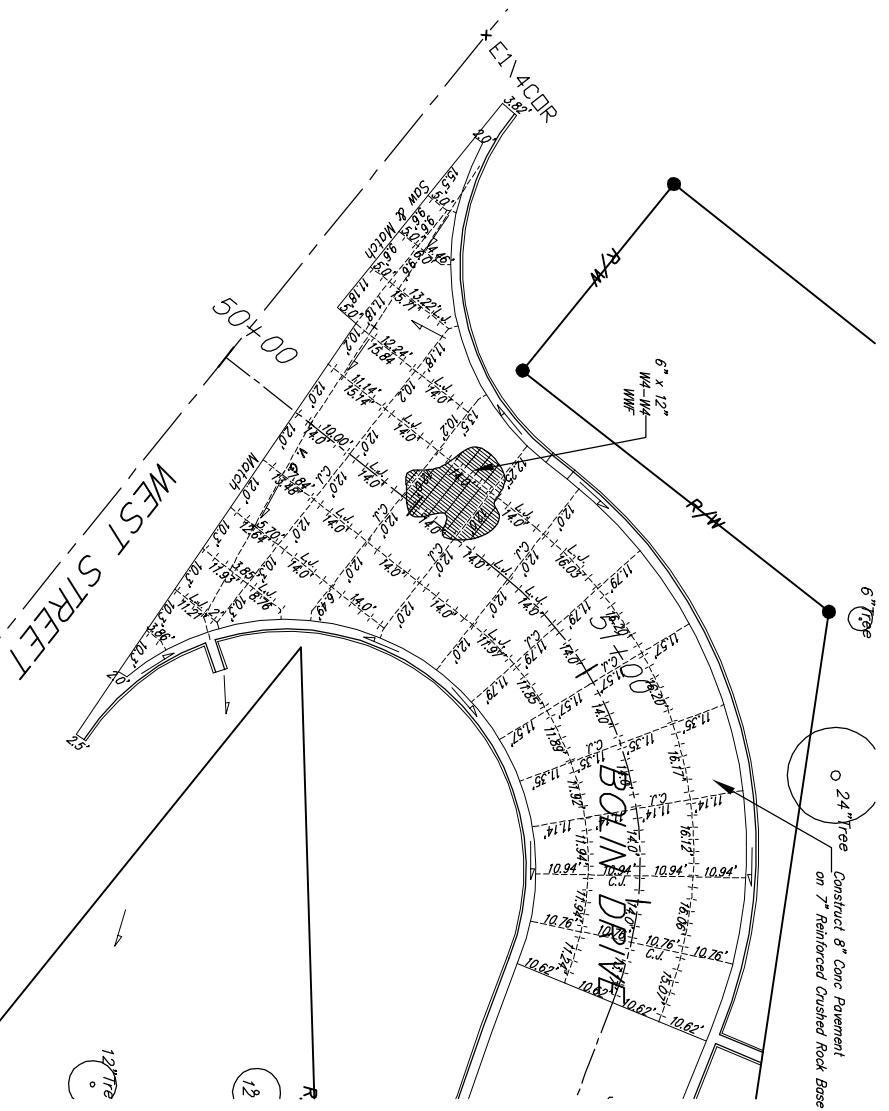
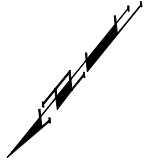


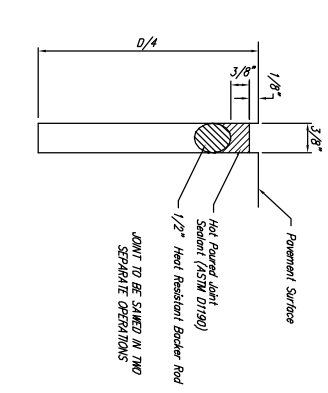
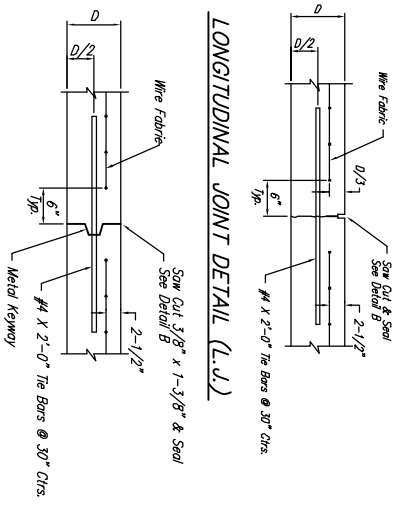
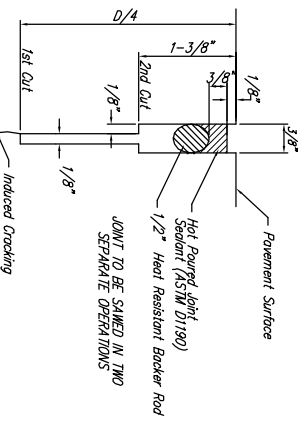
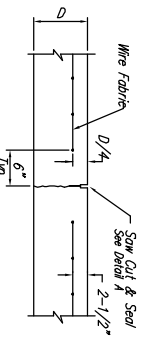
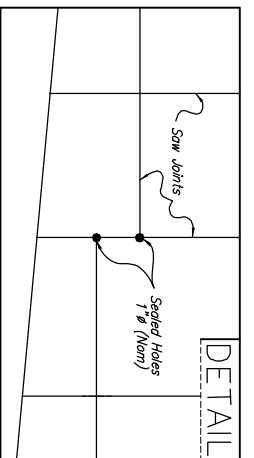
Benchmarks:
 City of Wichita Benchmark located at the NE Corner of West Street and MacArthur (39th St. South) Elevation = 99.46 (City Datum)
 City of Wichita Benchmark located at West Street and I-235 (Approx. 35th St. South) on NW Corner of RCBC, Top Corral Rail. Elevation = 104.78 (City Datum)



Scale: 1" = 20'
 • = Iron



TYPICAL CONCRETE PAVEMENT SECTION



NOTE:
 At all locations where joints are not concurrent through pavement sections, Contractor shall drill full pavement depth & seal. (See Detail This Sheet)

CONTRACTION JOINT DETAIL (C.J.)

SAW JOINT DETAIL "A"

OPTIONAL LONGITUDINAL JOINT DETAIL (L.J.)
 (CONSTRUCTION JOINT)

SAW JOINT DETAIL "B"

		BLUE LAKE ADDITION Street Improvements	
		Joint Plan	
Baughman Company, P.A., 310 East St. Wichita, KS 67202 ENGINEERING SURVEYING PLANNING LANDSCAPE ARCHITECTURE		DESIGN: TCA DRAWN: TCA	
PROJECT NUMBER: 417284078		APPROVED: JFB DATE: 04/16	
DESIGNER: KKK		SCALE: Noted SHEET: 8 OF 18	