

# STREET IMPROVEMENTS LOTS 1-24, BLOCK 1; LOTS 1-19 BLOCK 2; LOTS 1-20, BLOCK 3 CHERYL'S HOLLOW ADDITION

PROJECT NO. 472-84139  
OCA NO. 765920

## GENERAL NOTES

Contractor will be required to provide a minimum advance notice of twenty-four (24) hours to utility companies prior to starting any excavation as follows:

Kansas One-Call 687-2470

The Contractor must notify the following in case of an emergency:

Coz Communications 282-0861  
Kansas Gas Service 383-8600  
K.G.E. Electric 383-8600  
Peoples Natural Gas Company 1-800-303-0357  
Southwestern Bell Telephone Company 1-800-286-8313  
City of Wichita Water Department 282-6000  
City of Wichita Sewer Maintenance 282-6000

A saw cut of at least one-half the depth of existing surface courses or one-fourth the depth of existing total pavement thickness shall be provided at locations where proposed construction abuts an existing surface course or pavement for which partial removal of that surface or pavement is required, except when such saw cuts are within three (3) feet of an existing joint the limits of removal shall be extended to the existing joint. Such saw cuts will not be paid for directly and this cost shall be considered as subsidiary to the removal of the surface or pavement.

Rubble from the removal of miscellaneous structures and excess excavation which is to be wasted shall be disposed of on sites to be provided by the Contractor. These sites shall be approved by the Engineer as to suitability, appearance and site location. Locations that, in the opinion of the Engineer, will leave an unsightly appearance will not be approved.

All disposal sites must be approved by the Kansas Department of Health and Environment. Material either stockpiled or disposed of in a flood plain would require a Kansas State Board of Agriculture permit. Any material dumped in waters of the United States or wetlands is subject to U.S. Corps permitting regulations. Any material buried or stockpiled beyond approved of Engineers construction limits would require additional archeological investigations unless buried in a previously approved borrow location.

Limits of earthwork shall match existing ground elevations at the right-of-way line unless otherwise noted on the plans with a new finished grade elevation. When a new finished grade elevation is shown, the earthwork shall extend one foot beyond the right-of-way line and then sloped up or down using permissible slopes to match the existing ground surface.

The Contractor shall be responsible for preserving property irons. The Contractor will be required to re-establish any property irons which are damaged or destroyed by his construction operations. Such irons shall be re-established by a licensed land surveyor in accordance with state laws.

The Contractor shall give all property owners and/or tenants of developed property directly abutting the construction of this project a minimum of ten (10) days advance notice prior to start of construction.

The Contractor shall adjust Water Valve Boxes and Fire Hydrants as directed by the Engineer at the price bid for said adjustments. The Water Department shall field locate water valves one time during construction when requested by the Contractor. It shall be the Contractor's responsibility to preserve such field locations during the construction process. Water valves, water valve boxes or fire hydrants damaged during construction shall be repaired by the Contractor at his own expense.

Underground utility service lines and overhead utility pole lines are to be adjusted as necessary by others prior to construction unless the plans specifically call for their adjustment by the Contractor or unless the plans specifically identify a utility to be adjusted by its owner during construction. Existing utilities and their location, as shown on the plans, represent the best information obtainable for design. Location information has been obtained from the various utility companies and is either from company record drawings or company-provided field locations. The Contractor will be required to work around existing utilities within the right-of-way which do not conflict with proposed construction.

The Contractor shall notify pipeline companies at least 24 hours in advance of any work being performed across and/or adjacent to pipelines.

Trees and shrubs in public right-of-way which are in direct conflict with proposed new construction shall be removed by the Contractor with the Engineer's approval. Trees and shrubs which are not in direct conflict with proposed new construction shall be saved and protected from damage.

The Contractor shall seed, fertilize and mulch all disturbed areas per City specifications upon completion of construction.

Properties within the project limits may have underground sprinkler systems in public right-of-way which conflict with new construction. Contractor will be required to remove such improvements should they not be removed by their owner at the time of construction of the project. The Contractor will be required to salvage all sprinkler heads and/or valves and give such material to their owner. Portions of underground sprinkler systems not in conflict with new construction shall be protected from damage and shall remain in place. All work in connection with underground sprinkler systems shall be considered as subsidiary to the contract pay items for work.

Subdivision Bench Marks shall be "Frat Survey Markers No. 8134-08 3" top diameter" provided by Kansas Blue Print Co., Inc. Bench mark installation cost to be subsidiary to curb & gutter.

Two-way traffic and driveway access shall be maintained on 13th Street at all times during construction. Flaggers will be required when work is occurring on 13th Street. Construction traffic control must be maintained in accordance with the details on Sheets 28-29 during construction. The Sedwick County "Use of Public Right-of-Way Permit" must be approved prior to starting any work in County Right-of-Way.

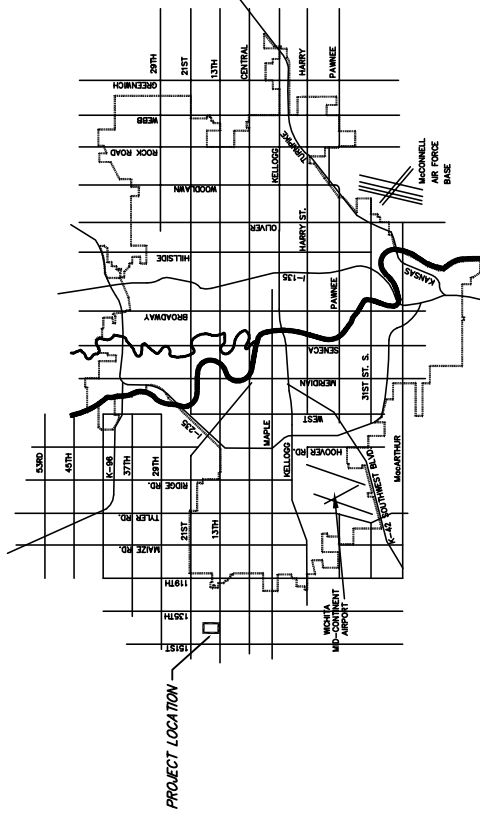
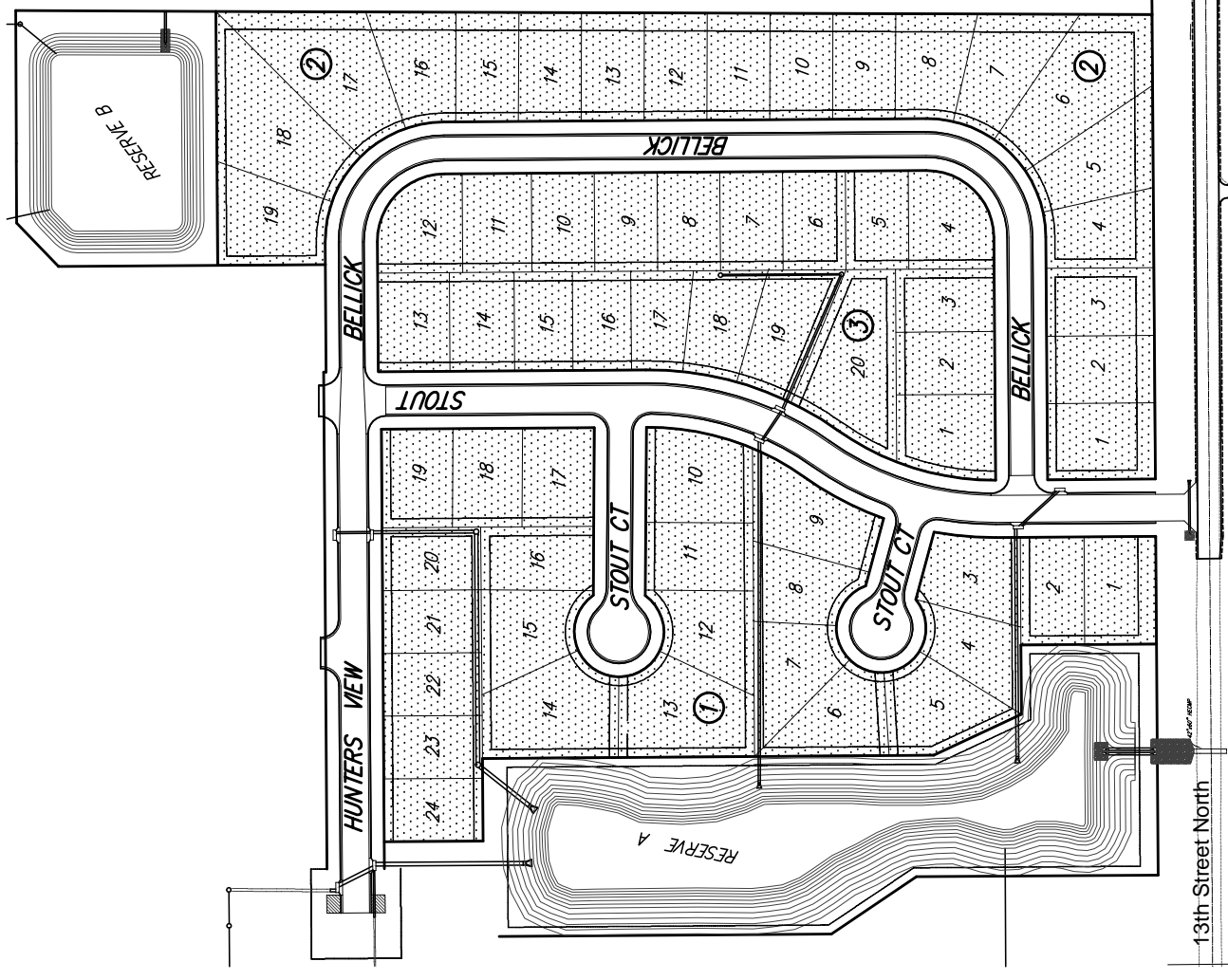
## BENCH MARKS

**BENCHMARK #1**  
C.O.W. DISC 0.5 MILES SOUTH OF 13TH STREET  
NORTH CL OF 135TH STREET WEST  
ELEV. 1347.11

**BENCHMARK #2**  
C.O.W. DISC 13TH STREET AND 135TH STREET  
WEST E. SIDE CONC BASE H/P 30' S & 35' W OF  
CL. ELEV. 1355.65

## INDEX OF SHEETS

- 1 TITLE SHEET
- 2 TYPICAL 28' PAVT. SECTION
- 3 TYPICAL 35' PAVT. SECTION
- 4 TYPICAL SECTION 13th STREET PAVT
- 5 INTERSECTION & VALLEY GUTTER DETAILS
- 6-7 STOUT
- 8-10 BELLIQ
- 11 HUNTERS VIEW
- 12 STOUT COURT
- 13 STOUT COURT
- 14 13th STREET PAVEMENT
- 15-19 INCIDENTAL DRAINAGE - STORM SEWER
- 20 EROSION CONTROL PLAN
- 21-22 TYPE 1A INLET DETAILS
- 23 TYPE 'P' MANHOLE DETAILS
- 24 SHALLOW MANHOLE DETAILS W/ BEEHIVE FRAME & GRAZE
- 25-27 INLET PROTECTION DETAILS
- 28 SIGNING DETAILS
- 29-30 CONSTRUCTION TRAFFIC CONTROL DETAILS
- 31-42 PAVEMENT CROSS SECTIONS
- 43 FINAL PLAT



## VICINITY MAP



## IMPROVEMENT DISTRICT



**Ruggles & Bohm, P.A.**  
Engineering, Surveying, Land Planning  
924 North Main (316) 264-8008  
Wichita, Kansas 67203 (316) 264-4621 fax  
www.rbkansas.com E-mail: info@rbkansas.com

CITY OF WICHITA, KANSAS  
JAMES ARMOUR, P.E. - CITY ENGINEER