

CHERYL'S HOLLOW

Wichita, Sedgwick County, Kansas



(A) = ASSUMED
M = MEASURED

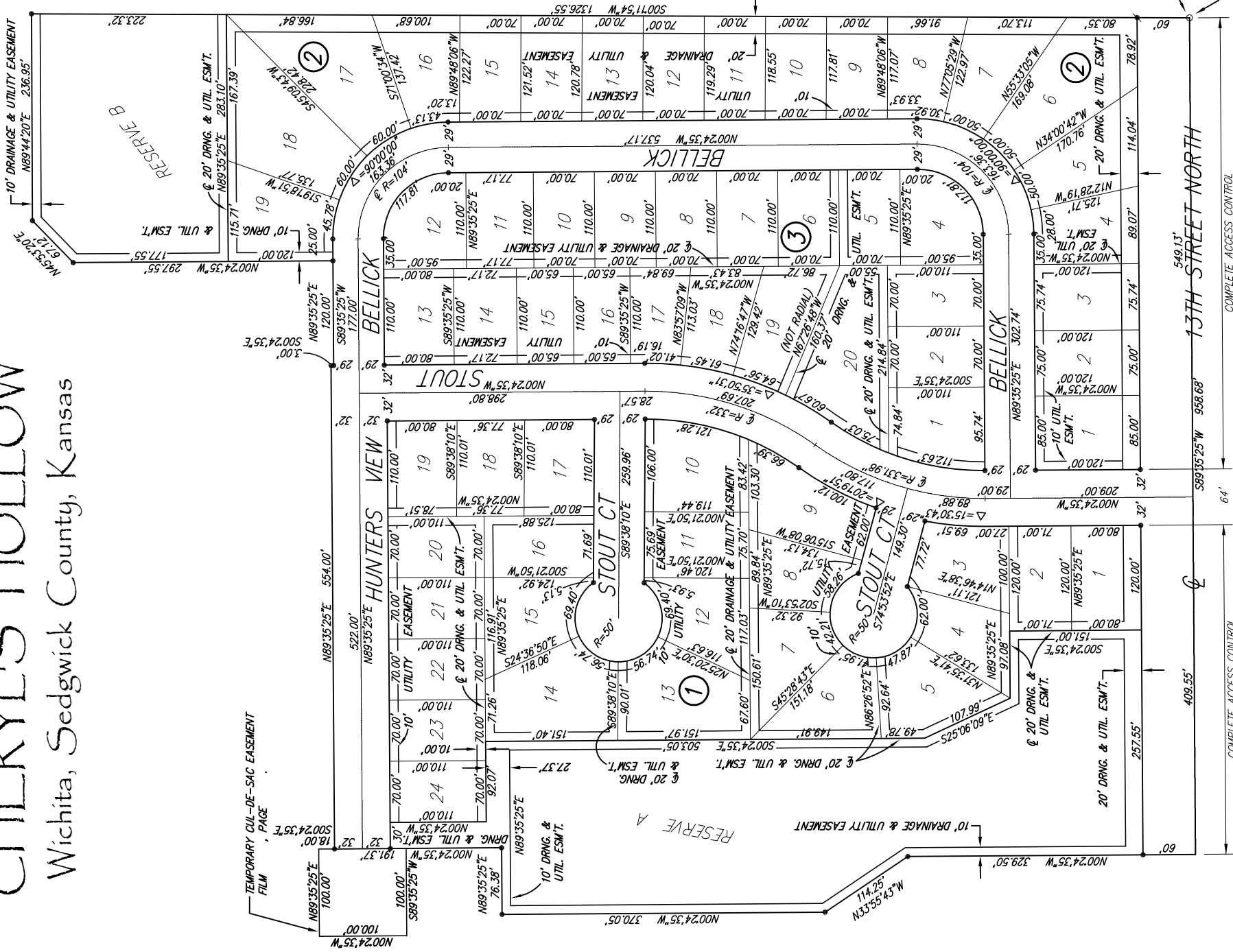
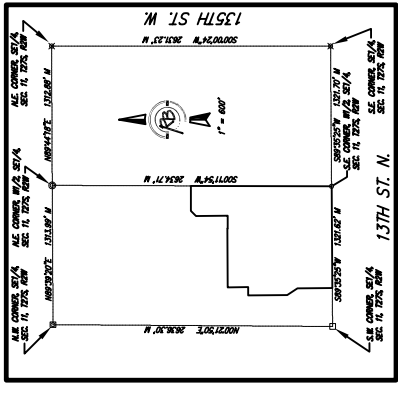
SURVEY MARKER LEGEND

- = STONE
- ⊠ = NAIL IN CENTER OF STONE
- = 1/2" IRON PIPE
- ⊙ = 1" IRON PIPE
- ⊗ = 3/4" IRON PIPE W/ SEDGWICK COUNTY ALUMINUM CAP (FOUND)
- = 5/8" REBAR W/R&B CAP (SET)
- ⦿ = 5/8" REBAR W/BAUGHMAN CAP (FOUND)

BENCH MARK: GOM BENCHMARK AT THE SOUTHWEST CORNER OF INTERSECTION OF 135TH ST. W. AND 13TH ST. N., EAST SIDE OF CONC. BASE FOR HLP 50± S. OF CENTER LINE AND 35± W. OF CENTER LINE ELEV.=1355.65 (M.S.L.)

ON-SITE BENCH MARK: R.R. SPIKE ON NORTH FACE OF HIGHLINE POWER POLE 131 FEET WEST AND 28 FEET SOUTH OF THE S.E. CORNER, W/2, SE1/4, SEC. 11, T27S, R2W ELEV.=1365.16 (M.S.L.)

BLOCK	LOT NO.	ELEVATION (N.G.V.D.)
1	1, 2, 3, 4, 5, 6, 7, 13, 14, 23, 24	1365
2	17, 18, 19	1364



FINAL PLAT
CHERYL'S HOLLOW ADDITION

Ruggles & Bohm, P.A.
Engineering, Surveying, Land Planning
924 North Main
Wichita, Kansas 67203
www.rbanas.com
(316) 284-8008
(316) 284-4821 fax
E-mail: info@rbanas.com

DESIGN: CMB
DRAWN: KWL
REVIEW: UTILITY
DATE: Aug. 3, 2005

PROJECT NUMBER: 472-84139
DRAWING FILE: Paving Details [final Plat]
SHEET: 43 OF 43

COMPLETE ACCESS CONTROL
549.13' P.O.B.
S.E. CORNER, W/2, SE1/4, SEC. 11, T27S, R2W