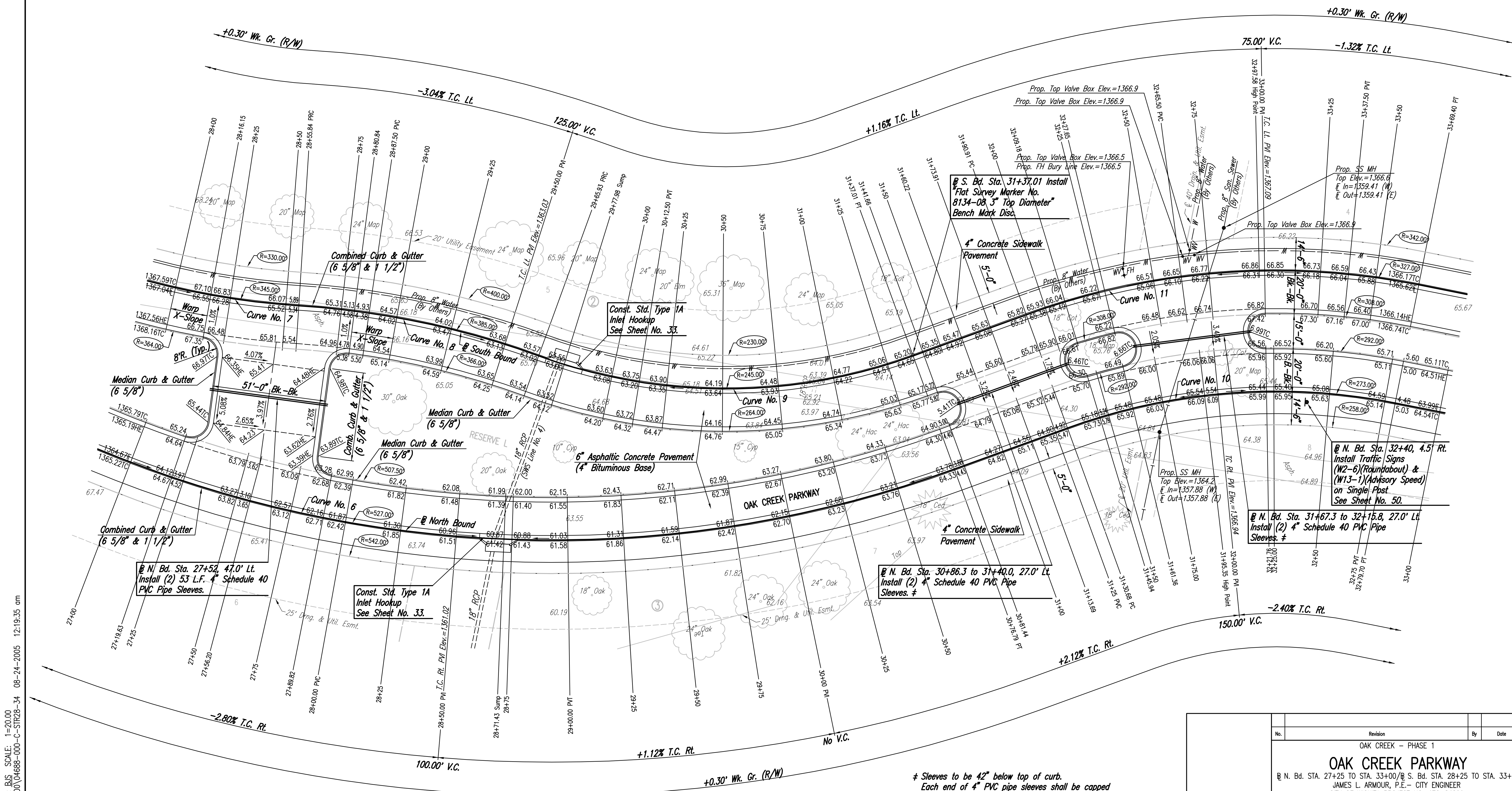


WATER VALVE BOX ELEVATIONS			
STREET	STATION	OFFSET	PROPOSED ELEVATION
OAK CREEK PARKWAY	@ S. Bd. 32+37.7	8.0' Lt.	1366.5
OAK CREEK PARKWAY	@ S. Bd. 32+64.3	9.0' Lt.	1366.9
OAK CREEK PARKWAY	@ S. Bd. 32+67.6	11.5' Lt.	1366.9
OAK CREEK PARKWAY	@ S. Bd. 32+69.4	9.0' Lt.	1366.9



SCALE: 1"=20'



DSNR: BJB OPER: BJS SCALE: 1"=20.00  
 C:\2004\04688\000\04688-000-C-S1R28-34 08-24-2005 12:19:35 am

# Sleeves to be 42" below top of curb.  
 Each end of 4" PVC pipe sleeves shall be capped and marked with steel "T" posts or 2" dia. steel pipe a maximum of 12" above finished grade. Pipe, caps, markers, and installation thereof shall be Subsidiary to Median Comb. Curb & Gutter (6 5/8").

No.	Revision	By	Date
OAK CREEK PARKWAY - PHASE 1			
<b>OAK CREEK PARKWAY</b>			
@ N. Bd. STA. 27+25 TO STA. 33+00/@ S. Bd. STA. 28+25 TO STA. 33+50 JAMES L. ARMOUR, P.E. - CITY ENGINEER CITY OF WICHITA PROJECT NO. 472-84209			
<b>Professional Engineering Consultants, P.A.</b> 303 S. TOPEKA • WICHITA, KANSAS 67202 316-262-2691 • FAX 316-262-3003			
Designed by	BDB, BLB	Job No.	35-04688-000
Drawn by	BJS	Date	October 2004
			Sheet 9 of 86

