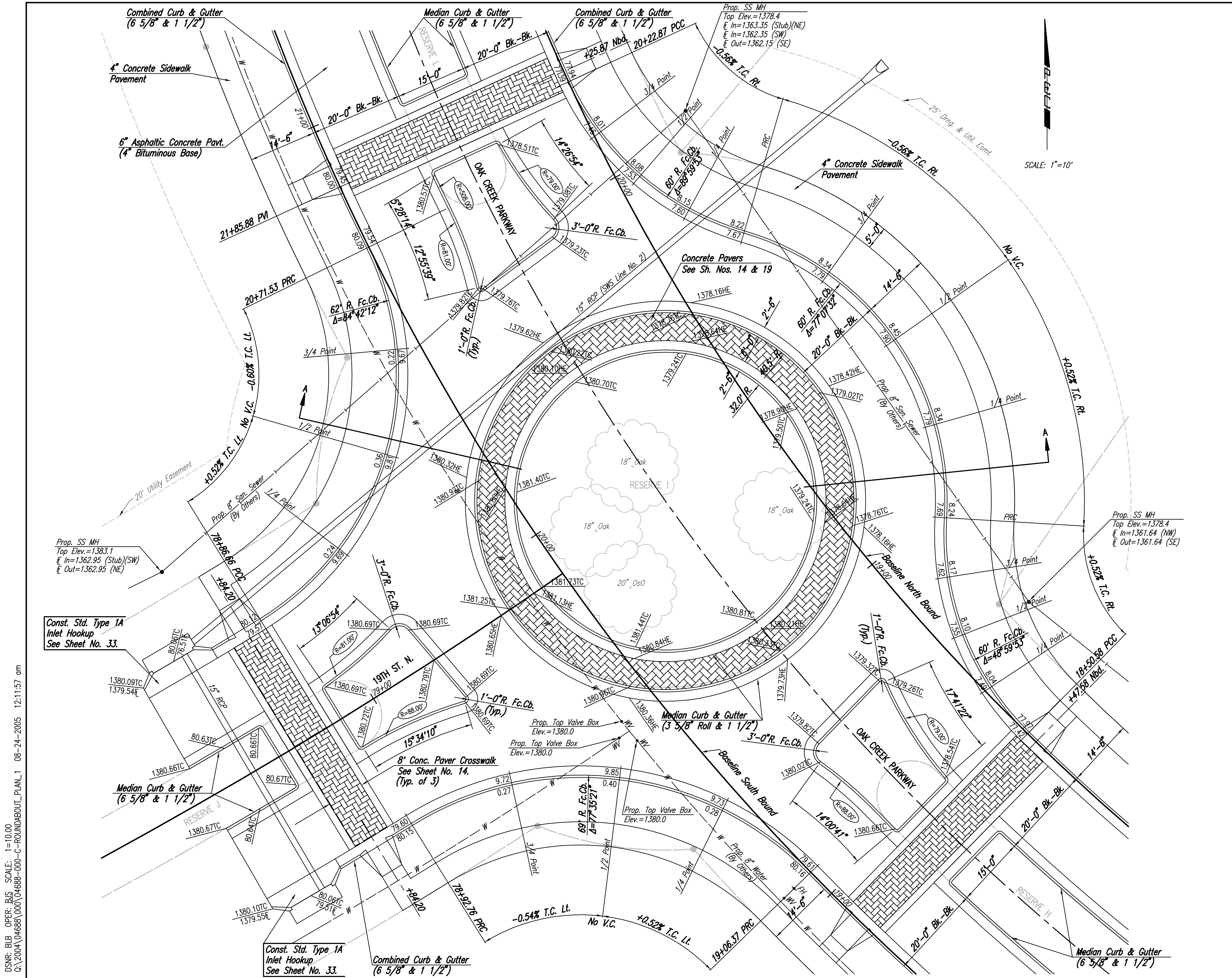


| WATER VALVE BOX ELEVATIONS | | | |
|----------------------------|-------------------|-----------|--------------------|
| STREET | STATION | OFFSET | PROPOSED ELEVATION |
| OAK CREEK PARKWAY | @ S. Bd. 19+51.94 | 9.0' Lt. | 1380.0 |
| OAK CREEK PARKWAY | @ S. Bd. 19+54.75 | 11.6' Lt. | 1380.0 |
| OAK CREEK PARKWAY | @ S. Bd. 19+57.15 | 9.0' Lt. | 1380.0 |

NOTE: PORTION OF THIS STREET TO BE CONSTRUCTED WITH ROLL-TYPE CURB. TOP OF CURB ELEVATIONS GIVEN ARE FOR FULL HEIGHT CURB.

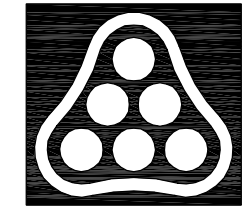


DSNR: BLB OPER: BJS SCALE: 1"=10.00
 C:\2004\04688\000\04688-000-C-ROUNDABOUT_PLAN_1 08-24-2005 12:11:57 am

Note: Control coordinates for median islands will be provided to stakers on request.

See Next Sheet for Roundabout Signing Plan.

Section A-A, See Sheet No. 19.



| | | | |
|--|---------------------|---------|----------------|
| No. | Revision | By | Date |
| | OAK CREEK - PHASE 1 | | |
| ROUNDABOUT PLAN | | | |
| STA. 20+00 JAMES L. ARMOUR, P.E. - CITY ENGINEER CITY OF WICHITA PROJECT NO. 472-84209 | | | |
| Professional Engineering Consultants, P.A. 303 S. TOPKA • WICHITA, KANSAS 67202 316-262-2691 • FAX 316-262-3003 | | | |
| Designed by | BDB, BLB | Job No. | 35-04688-000 |
| Drawn by | BJS | Date | October 2004 |
| | | | Sheet 15 of 86 |