

**CURVE TABLE (C1)**

△ = 69°44'53" R = 500.00' T = 348.47' L = 608.67' LC = 571.77'

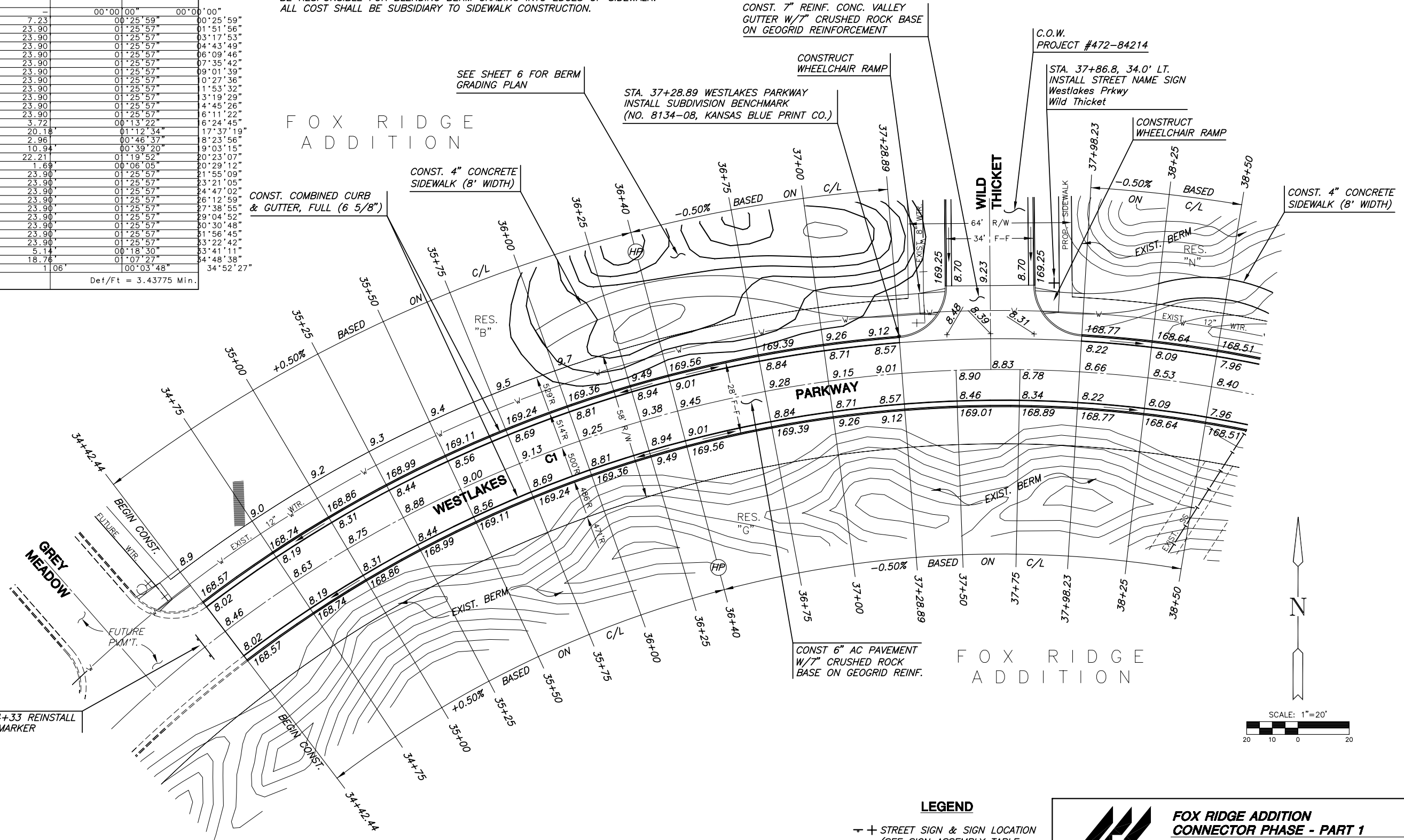
CURVE DATA BASED ON CENTERLINE △ /2 = 34°52'26"

STATION	ARC	CHORD LENGTH		DEFLECTION	TOTAL DEFLECTION
		8' Off Lt Cb	8' Off Rt Cb		
34+42.44	-	-	-	00°00'00"	00°00'00"
34+50.00	7.56'	7.89'	7.23'	00°25'59"	00°25'59"
34+75.00	25.00'	26.10'	23.90'	01°25'57"	01°51'56"
35+00.00	25.00'	26.10'	23.90'	01°25'57"	03°17'53"
35+25.00	25.00'	26.10'	23.90'	01°25'57"	04°43'49"
35+50.00	25.00'	26.10'	23.90'	01°25'57"	06°09'46"
35+75.00	25.00'	26.10'	23.90'	01°25'57"	07°35'42"
36+00.00	25.00'	26.10'	23.90'	01°25'57"	09°01'39"
36+25.00	25.00'	26.10'	23.90'	01°25'57"	02°27'36"
36+50.00	25.00'	26.10'	23.90'	01°25'57"	1°53'32"
36+75.00	25.00'	26.10'	23.90'	01°25'57"	3°19'29"
37+00.00	25.00'	26.10'	23.90'	01°25'57"	4°45'26"
37+25.00	25.00'	26.10'	23.90'	01°25'57"	6°11'22"
37+28.89	3.89'	4.06'	3.72'	00°13'22"	6°24'45"
37+50.00	21.11'	22.04'	20.18'	01°12'34"	17°37'19"
37+63.56	13.56'	14.16'	2.96'	00°46'37"	8°23'56"
37+75.00	11.44'	11.94'	10.94'	00°39'20"	9°03'15"
37+98.23	23.23'	24.25'	22.21'	01°19'52"	20°23'07"
38+00.00	1.77'	1.85'	1.69'	00°06'05"	20°29'12"
38+25.00	25.00'	26.10'	23.90'	01°25'57"	21°55'09"
38+50.00	25.00'	26.10'	23.90'	01°25'57"	23°21'05"
38+75.00	25.00'	26.10'	23.90'	01°25'57"	24°47'02"
39+00.00	25.00'	26.10'	23.90'	01°25'57"	26°12'59"
39+25.00	25.00'	26.10'	23.90'	01°25'57"	27°38'55"
39+50.00	25.00'	26.10'	23.90'	01°25'57"	29°04'52"
39+75.00	25.00'	26.10'	23.90'	01°25'57"	30°30'48"
40+00.00	25.00'	26.10'	23.90'	01°25'57"	31°56'45"
40+25.00	25.00'	26.10'	23.90'	01°25'57"	33°22'42"
40+30.38	5.38'	5.62'	5.14'	00°18'30"	33°41'11"
40+50.00	19.62'	20.48'	18.76'	01°07'27"	34°48'38"
40+51.11	1.11'	1.16'	1.06'	00°03'48"	34°52'27"

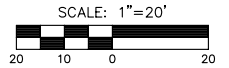
Def/Ft = 3.43775 Min.

**SIDEWALK NOTES**

SIDEWALK ALIGNMENT TO BE APPROVED BY MKEC LANDSCAPE ARCHITECT. CONTRACTOR SHALL EXPECT TO COMPLETE FINAL GRADING AND SHAPING OF SIDEWALK ALIGNMENT ALONG BERM AND ALONG THE NORTH EDGE OF THE PROJECT. CONTRACTOR SHALL BE REQUIRED TO VERIFY AND CONSTRUCT MAXIMUM 5% GRADE FOR LONGITUDINAL GRADE OF SIDEWALK AND 2% MAXIMUM CROSS SECTIONAL GRADE. CONTRACTOR SHALL ALSO BE RESPONSIBLE FOR BLENDING BERM GRADING INTO EDGES OF SIDEWALK. ALL COST SHALL BE SUBSIDIARY TO SIDEWALK CONSTRUCTION.



STA. 34+33 REINSTALL E.O.R. MARKER



**LEGEND**

± STREET SIGN & SIGN LOCATION (SEE SIGN ASSEMBLY TABLE FOR TYPE & STATION OF SIGN)

NOTE: TOP OF CURB ELEVATIONS SHOWN ARE FOR FULL CURB. CONSTRUCT CURB AND GUTTER AS NOTED.

**SUBDIVISION BENCH MARKS**

NO.	STREET AND STATION	FROM CL	DESCRIPTION	ELEVATIONS
1	WESTLAKES PARKWAY STA 37+28.89	14.5' LT.	TOP OF CURB AT END RETURN WILD THICKET	169.12

NOTE: CONTRACTOR SHALL INSTALL SUBDIVISION BENCH MARKS ("FLAT SURVEY MARKERS NO. 8134-08 3" TOP DIAMETER" PROVIDED BY KANSAS BLUE PRINT CO., INC.) COSTS TO BE CONSIDERED SUBSIDIARY TO CONSTRUCTION OF COMBINED RB AND GUTTER.



**FOX RIDGE ADDITION**  
**CONNECTOR PHASE - PART 1**  
PROJECT NAME

**WEST LAKES PARKWAY PAVING**  
SHEET TITLE

DFL	MKEC	GJA
DESIGN BY:	DRAWN BY:	CHECKED BY:
SEPTEMBER 2005	99118	5 / 14
DATE	JOB NO.	SHEET/OF

G:\CIVIL\98118\DWG\PAV\CONN PH PART1\98118.DWG