

PAVING STREETS & INCIDENTAL DRAINAGE FOR

KILLENWOOD POINTE ADDITION

PHASE 3

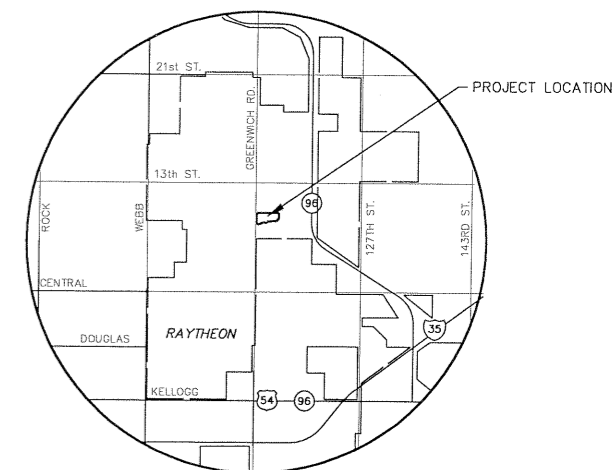
AN ADDITION TO THE CITY OF WICHITA
SEDGWICK COUNTY, KANSAS

JULY 2004

PROJECT NO. 472-83269

JIM ARMOUR, ACTING CITY ENGINEER

OCA 765884



VICINITY MAP

INDEX TO DRAWINGS

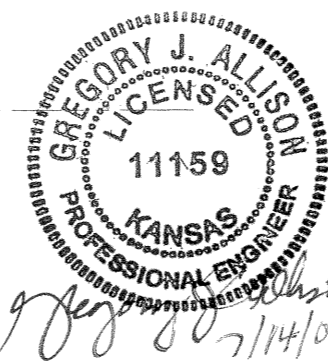
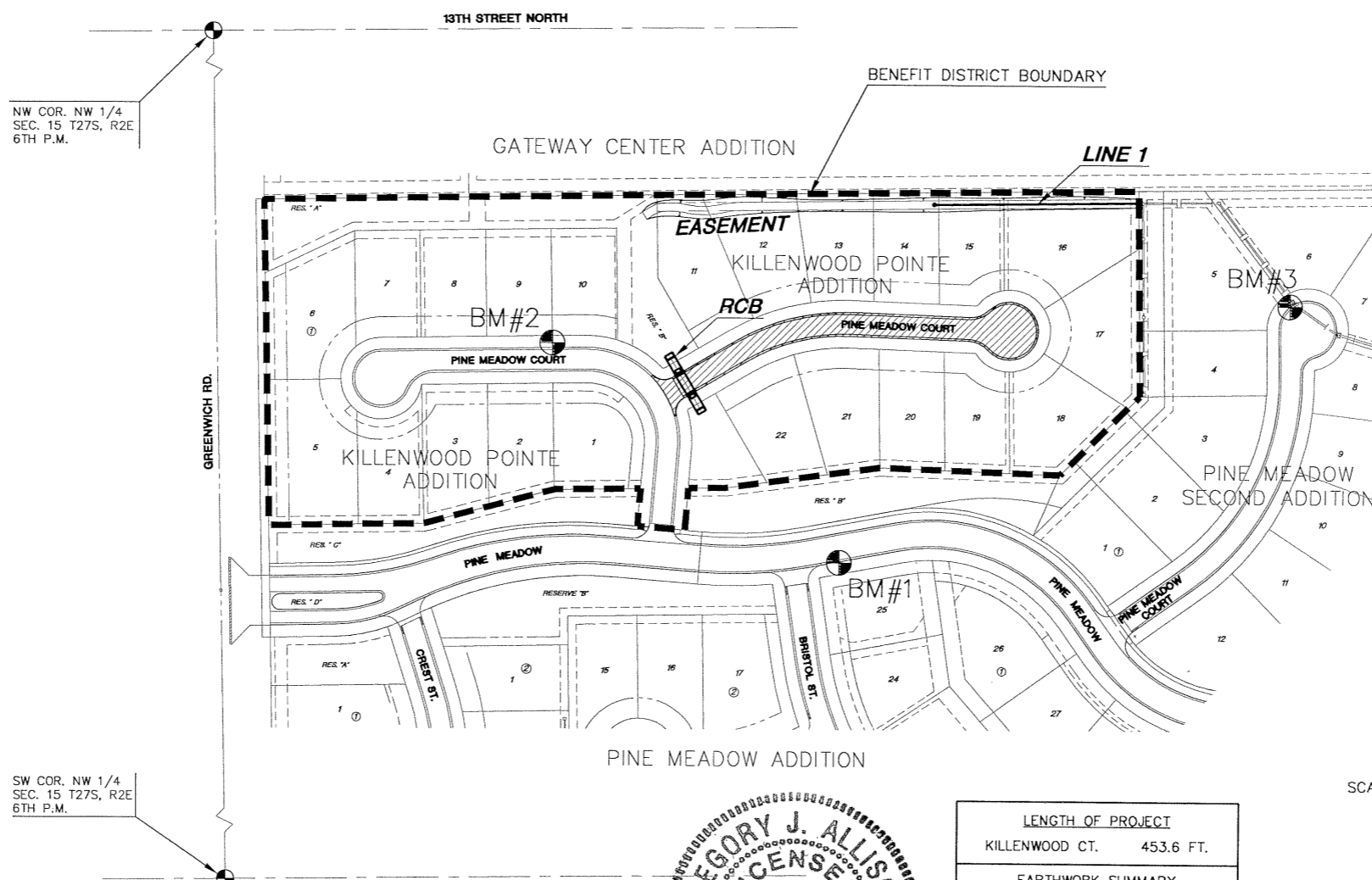
SHEET NO.	DESCRIPTION
1	TITLE SHEET
2	TYP. PAVING SECTION
3	PAVING DETAILS
4	PAVING PLANS
5-6	SWS DETAILS
7	SWS LINE 1
8	EASEMENT GRADING
9	RCB DETAILS
10	RCB PLAN & PROFILE
11-15	BMP DETAILS
16-17	CROSS SECTIONS
18	FINAL PLAT

BENCHMARKS

- BM #1 Brass disc in top of South curb Pine Meadow Street, 40' +/- East of centerline Bristol St. Elev. = 1379.18.
- BM #2 Chiseled square on top of North curb of Pine Meadow Ct at Southwest Corner Lot 10, Block 1, Killenwood Pointe Addition (near fire hydrant). Elev. = 1382.02.
- BM #3 Chiseled square on Southwest corner of curb inlet at Northeast corner of Lot 5, Block 1, Pine Meadows 2nd Addition. Elev. = 1376.74.

SCALE: 1" = 150'

PINE MEADOW COURT: FROM THE EAST LINE OF PINE MEADOW COURT TO AND INCLUDING THE CUL-DE-SAC SERVING LOTS 11-22, BLOCK 1.



LENGTH OF PROJECT	
KILLENWOOD CT.	453.6 FT.
EARTHWORK SUMMARY	
PAVEMENT	
EXCAVATION	10 C.Y.
LOOSE FILL	1940 C.Y.
COMPACTED FILL	2140 C.Y.
CONTRACTOR FURN.	4500 C.Y.
EASEMENT GRADING*	
EXCAVATION	340 C.Y.
LOOSE FILL	0 C.Y.
* FOR INFORMATION ONLY	

GENERAL NOTES

- UNLESS SHOWN OR STATED OTHERWISE ON THESE DRAWINGS, MATERIALS AND CONSTRUCTION SHALL BE IN ACCORDANCE WITH CITY OF WICHITA CONCRETE PAVEMENT AND ASPHALTIC CONCRETE PAVEMENT SPECIFICATIONS.
- CONTRACTOR WILL BE REQUIRED TO PROVIDE A MINIMUM ADVANCE NOTICE OF SEVENTY-TWO (72) HOURS TO UTILITY COMPANIES PRIOR TO STARTING ANY EXCAVATION AS FOLLOWS:
KANSAS ONE-CALL 1-800-344-7233
OR 687-2470 (LOCAL WICHITA)
- THE CONTRACTOR MUST NOTIFY THE FOLLOWING IN CASE OF AN EMERGENCY:
SBC (TELEPHONE) 800-870-8390
COX COMMUNICATIONS (CABLE) 262-0661
WESTAR (ELECTRIC) 383-8600
KANSAS GAS SERVICE (GAS) 832-3101
CITY OF WICHITA WATER & SEWER MAINT. 262-6000
AQUILA (GAS) 946-0096
- THE CONTRACTOR SHALL BE RESPONSIBLE FOR PRESERVING PROPERTY IRONS. THE CONTRACTOR WILL BE REQUIRED TO RE-ESTABLISH ANY PROPERTY IRONS WHICH ARE DAMAGED OR DESTROYED BY HIS CONSTRUCTION OPERATIONS. SUCH IRONS SHALL BE RE-ESTABLISHED BY A LICENSED LAND SURVEYOR IN ACCORDANCE WITH STATE LAWS.
- EXISTING UTILITIES AND THEIR LOCATIONS, AS SHOWN ON THE PLANS REPRESENT THE BEST INFORMATION OBTAINABLE FOR DESIGN. LOCATION INFORMATION HAS BEEN OBTAINED FROM THE VARIOUS UTILITY COMPANIES AND IS EITHER FROM COMPANY RECORD DRAWINGS OR COMPANY PROVIDED FIELD LOCATIONS. THE PLAN LOCATIONS SHOWN ARE NOT GUARANTEED. ADDITIONAL EXISTING UTILITIES MAY ALSO BE ENCOUNTERED.
- RUBBLE FROM THE REMOVAL OF MISCELLANEOUS STRUCTURES AND EXCESS EXCAVATION WHICH IS TO BE WASTED SHALL BE DISPOSED OF ON SITES TO BE PROVIDED BY THE CONTRACTOR. THESE SITES SHALL BE APPROVED BY THE ENGINEER AS TO SUITABILITY, APPEARANCE AND SITE LOCATION. LOCATIONS THAT, IN THE OPINION OF THE ENGINEER, WILL LEAVE AN UNSIGHTLY APPEARANCE WILL NOT BE APPROVED. ALL DISPOSAL SITES MUST BE APPROVED BY THE KANSAS DEPARTMENT OF HEALTH AND ENVIRONMENT. MATERIAL EITHER STOCKPILED OR DISPOSED OF IN A FLOOD PLAIN WOULD REQUIRE A KANSAS STATE BOARD OF AGRICULTURE PERMIT. ANY MATERIAL DUMPED IN WATERS OF THE UNITED STATES OR WETLANDS IS SUBJECT TO U.S. CORPS OF ENGINEERS PERMITTING REGULATIONS. ANY MATERIAL BURIED OR STOCKPILED BEYOND APPROVED CONSTRUCTION LIMITS WOULD REQUIRE ADDITIONAL ARCHAEOLOGICAL INVESTIGATIONS UNLESS BURIED IN A PREVIOUSLY APPROVED BORROW LOCATION.
- THIS PROJECT INCLUDES A CERTAIN AMOUNT OF ROLL TYPE CURB CONSTRUCTION. ROLL CURBS SHALL BE DEPRESSED THROUGH ALL DRIVEWAY OPENINGS WHEN SUCH DRIVES ARE CONSTRUCTED AS A PART OF THE PROJECT. NO MORE THAN 2 DRIVES 20 FEET IN WIDTH OR EQUIVALENT COMBINATIONS THEREOF ARE TO BE CONSTRUCTED WITH THIS PROJECT.
- TRANSITION CURB FROM FULL HEIGHT COMBINATION CURB AND GUTTER TO ROLL TYPE COMBINATION CURB AND GUTTER IS TO BE PAID AS BID FOR LINEAL FEET COMBINED CURB AND GUTTER (3 5/8" ROLL).
- A SAW CUT OF AT LEAST ONE-HALF THE DEPTH OF THE EXISTING SURFACE COURSES OR ONE-FOURTH THE DEPTH OF THE EXISTING TOTAL PAVEMENT THICKNESS SHALL BE PROVIDED AT LOCATIONS WHERE PROPOSED CONSTRUCTION ABUTS AN EXISTING SURFACE OR PAVEMENT FOR WHICH PARTIAL REMOVAL OF THAT SURFACE OR PAVEMENT IS REQUIRED. SAW JOINT TO FACILITATE REMOVAL WITHIN THREE (3) FEET OF EXISTING JOINTS WILL NOT BE PERMITTED AND FOR SUCH INSTANCES THE LIMITS OF REMOVAL SHALL EXTEND TO THE EXISTING JOINT. SUCH SAW CUTS WILL NOT BE PAID FOR DIRECTLY AND THIS COST SHALL BE CONSIDERED AS SUBSIDIARY TO THE REMOVAL OF SURFACE OR PAVEMENT.
- ALL DISTURBED AREAS SHALL BE SEEDED AND MULCHED. SEEDING SHALL BE RYE GRASS AT A RATE OF 200 LBS PER ACRE.
- CONTRACTOR SHALL CONTACT CARY GLASSE WITH TREE TOP 686-7491 TO LOCATE EXIST. IRRIGATION SYSTEM. ANY CONFLICTS WITH PROPOSED WORK REQUIRING RELOCATION OF IRRIGATION SYSTEM SHALL BE COORDINATE WITH CARY.

KILLENWOOD POINTE ADDITION - PHASE 3
PROJECT NAME

PAVING PLANS
SHEET TITLE

DFL DESIGN BY:	DMU DRAWN BY:	GJA CHECKED BY:
JULY 2004 DATE	00062 JOB NO.	1 / 18 SHEET / OF

