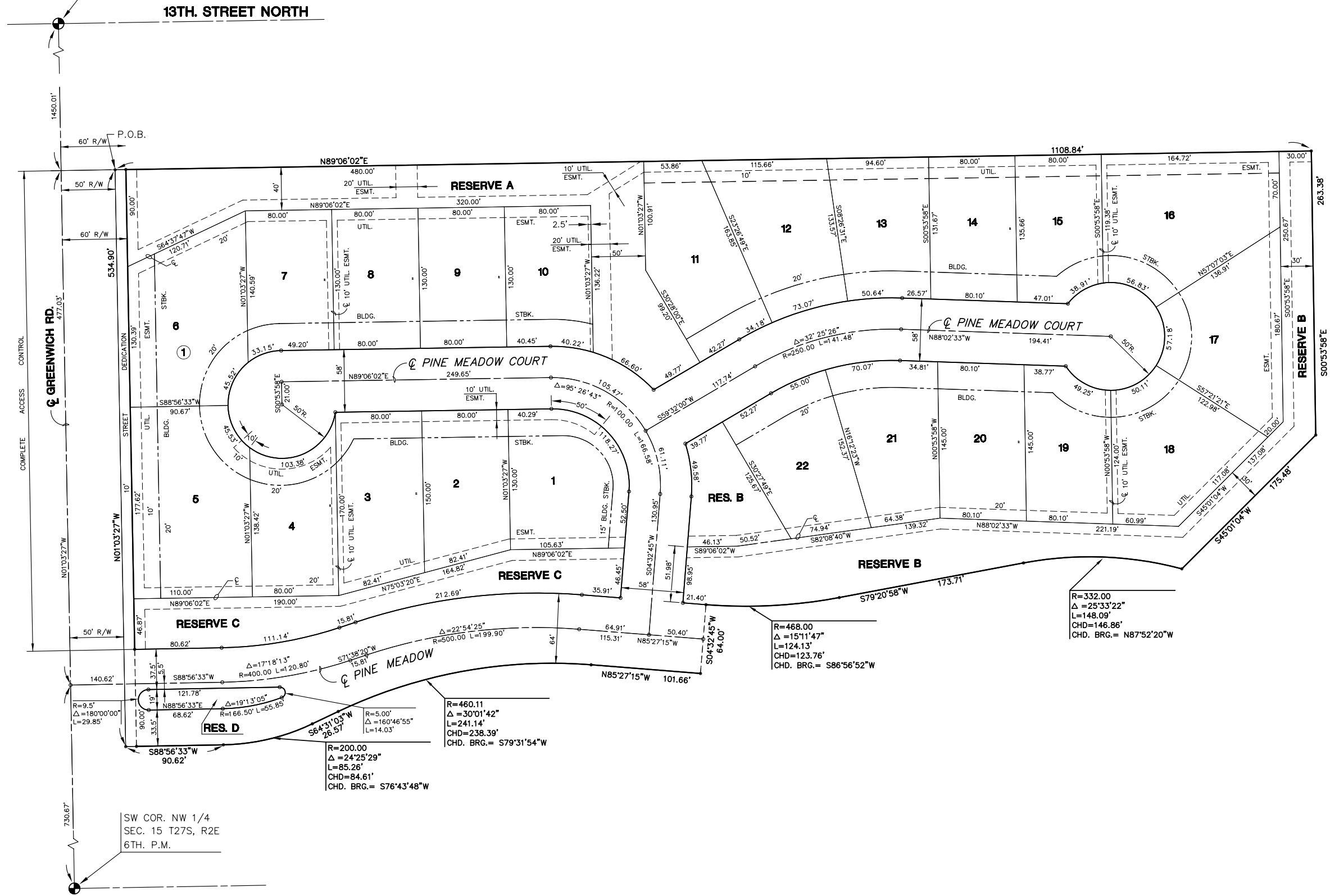


# FINAL PLAT

## KILLENWOOD POINTE ADDITION

### AN ADDITION TO WICHITA, SEDGWICK COUNTY, KANSAS

NW COR. NW 1/4  
SEC. 15, T27S, R2E  
6TH. P.M.



COMPLETE ACCESS CONTROL



- LEGEND**
- = I.P.
  - B.S. = BUILDING SETBACK
  - U.E. = UTILITY EASEMENT
  - D.&U.E. = DRAINAGE & UTILITY EASEMENT

SW COR. NW 1/4  
SEC. 15 T27S, R2E  
6TH. P.M.