

PAVING STREETS AND INCIDENTAL DRAINAGE IN HAWTHORNE THIRD ADDITION

AN ADDITION TO THE CITY OF WICHITA
SEDGWICK COUNTY, KANSAS

WILLIAMSGATE/CAMDEN CHASE PHASE

PROJECT NO. 472-83644

JIM ARMOUR, P.E. - ACTING CITY ENGINEER

OCA 765774

Williamsgate from the West line of
Lot 1, Block 1, to the East line of
Lot 1, Block 3, Hawthorne Third Addition

GENERAL NOTES

1. UNLESS SHOWN OR STATED OTHERWISE ON THESE DRAWINGS, MATERIALS AND CONSTRUCTION SHALL BE IN ACCORDANCE WITH CITY OF WICHITA CONCRETE PAVEMENT AND ASPHALTIC CONCRETE PAVEMENT SPECIFICATIONS.
2. THE CONTRACTOR SHALL BE RESPONSIBLE FOR PRESERVING PROPERTY IRONS. THE CONTRACTOR WILL BE REQUIRED TO RE-ESTABLISH ANY PROPERTY IRONS WHICH ARE DAMAGED OR DESTROYED BY HIS CONSTRUCTION OPERATIONS. SUCH IRONS SHALL BE RE-ESTABLISHED BY A LICENSED LAND SURVEYOR IN ACCORDANCE WITH STATE LAWS.
3. TRANSITION CURB FROM FULL HEIGHT COMBINATION CURB AND GUTTER TO ROLL TYPE COMBINATION CURB AND GUTTER IS TO BE PAID AS BID FOR LINEAL FEET COMBINED CURB AND GUTTER (3 5/8" ROLL).
4. EXISTING UTILITIES AND THEIR LOCATIONS, AS SHOWN ON THE PLANS REPRESENT THE BEST INFORMATION OBTAINABLE FOR DESIGN. LOCATION INFORMATION HAS BEEN OBTAINED FROM THE VARIOUS UTILITY COMPANIES AND IS EITHER FROM COMPANY RECORD DRAWINGS OR COMPANY PROVIDED FIELD LOCATIONS. THE PLAN LOCATIONS SHOWN ARE NOT GUARANTEED. ADDITIONAL EXISTING UTILITIES MAY ALSO BE ENCOUNTERED.
5. CONTRACTOR WILL BE REQUIRED TO PROVIDE A MINIMUM ADVANCE NOTICE OF FORTY-EIGHT (48) HOURS TO UTILITY COMPANIES PRIOR TO STARTING ANY EXCAVATION AS FOLLOWS:

KANSAS ONE-CALL 1-800-344-7233
OR 687-2470 (LOCAL WICHITA)

THE CONTRACTOR MUST NOTIFY THE FOLLOWING IN CASE OF AN EMERGENCY:

SBC (TELEPHONE)	800-870-8390
COX COMMUNICATIONS (CABLE)	262-0661
WESTAR (ELECTRIC)	383-8600
KANSAS GAS SERVICE (GAS)	832-3101
CITY OF WICHITA WATER & SEWER MAINT.	262-6000
AQUILA (GAS)	946-0096
KANEB PIPELINE	773-9000

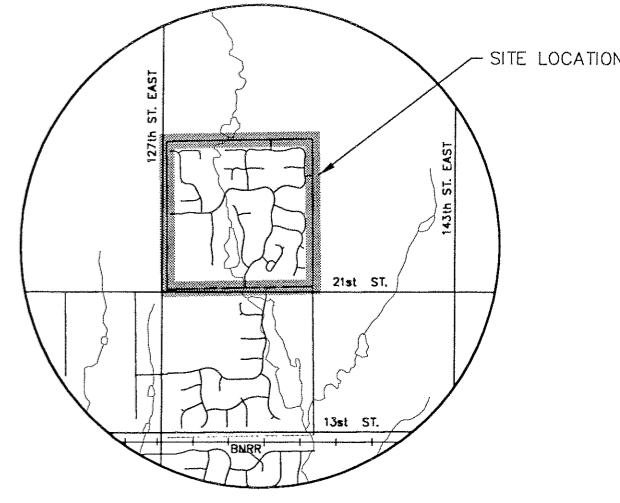
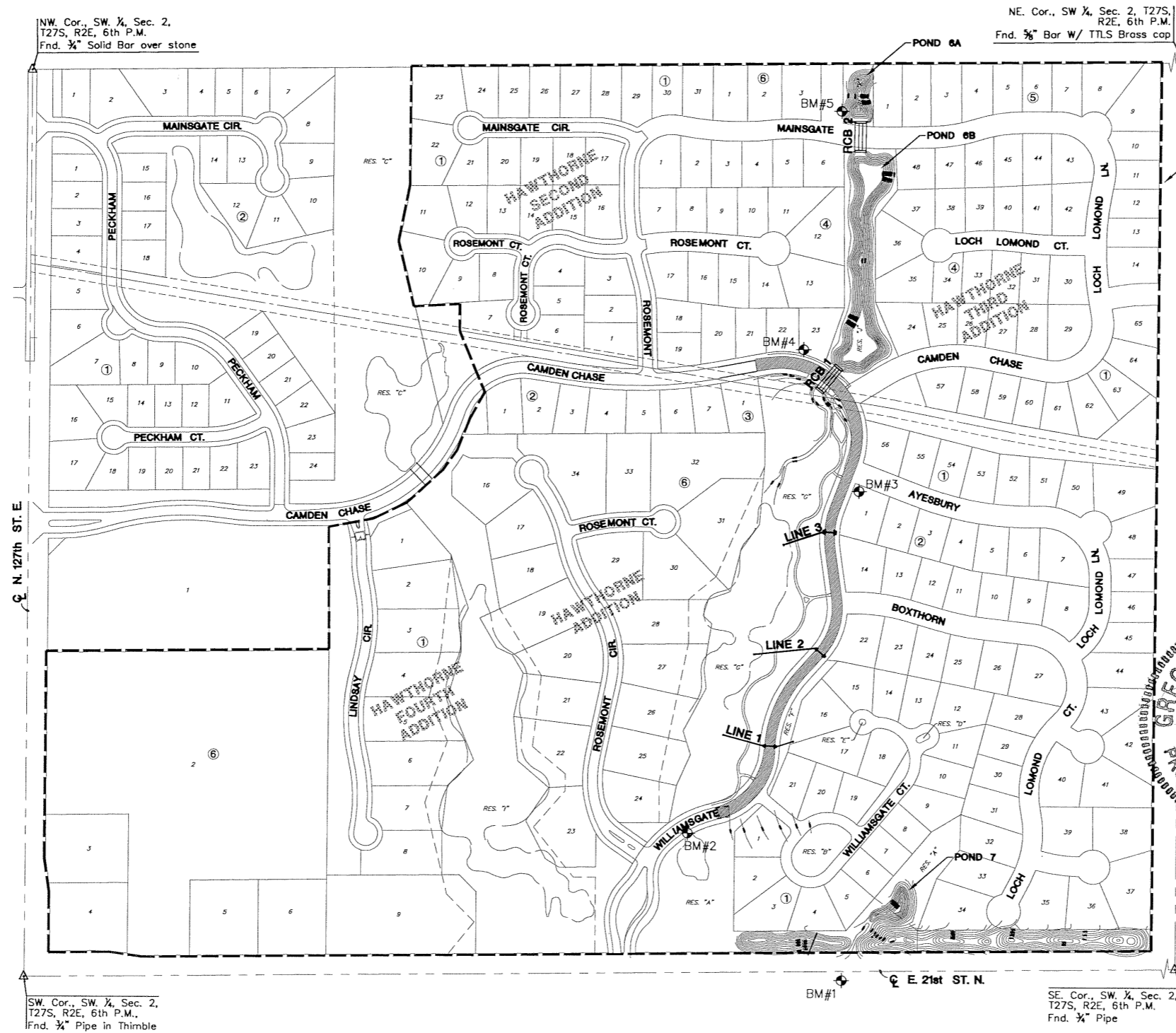
6. RUBBLE FROM THE REMOVAL OF MISCELLANEOUS STRUCTURES AND EXCESS EXCAVATION WHICH IS TO BE WASTED SHALL BE DISPOSED OF ON SITES TO BE PROVIDED BY THE CONTRACTOR. THESE SITES SHALL BE APPROVED BY THE ENGINEER AS TO SUITABILITY, APPEARANCE AND SITE LOCATION. LOCATIONS THAT, IN THE OPINION OF THE ENGINEER, WILL LEAVE AN UNSIGHTLY APPEARANCE WILL NOT BE APPROVED. ALL DISPOSAL SITES MUST BE APPROVED BY THE KANSAS DEPARTMENT OF HEALTH AND ENVIRONMENT. MATERIAL EITHER STOCKPILED OR DISPOSED OF IN A FLOOD PLAIN WOULD REQUIRE A KANSAS STATE BOARD OF AGRICULTURE PERMIT. ANY MATERIAL DUMPED IN WATERS OF THE UNITED STATES OR WETLANDS IS SUBJECT TO U.S. CORPS OF ENGINEERS PERMITTING REGULATIONS. ANY MATERIAL BURIED OR STOCKPILED BEYOND APPROVED CONSTRUCTION LIMITS WOULD REQUIRE ADDITIONAL ARCHAEOLOGICAL INVESTIGATIONS UNLESS BURIED IN A PREVIOUSLY APPROVED BORROW LOCATION.

7. A SAW CUT OF AT LEAST ONE-HALF THE DEPTH OF THE EXISTING SURFACE COURSES OR ONE-FOURTH THE DEPTH OF THE EXISTING TOTAL PAVEMENT THICKNESS SHALL BE PROVIDED AT LOCATIONS WHERE PROPOSED CONSTRUCTION ABUTS AN EXISTING SURFACE OR PAVEMENT FOR WHICH PARTIAL REMOVAL OF THAT SURFACE OR PAVEMENT IS REQUIRED. SAW JOINT TO FACILITATE REMOVAL WITHIN THREE (3) FEET OF EXISTING JOINTS WILL NOT BE PERMITTED AND FOR SUCH INSTANCES THE LIMITS OF REMOVAL SHALL EXTEND TO THE EXISTING JOINT. SUCH SAW CUTS WILL NOT BE PAID FOR DIRECTLY AND THIS COST SHALL BE CONSIDERED AS SUBSIDIARY TO THE REMOVAL OF SURFACE OR PAVEMENT.

8. ALL AREAS DISTURBED SHALL BE SEED AS FOLLOWS:
K-31 FESCUE AT A RATE OF 300 LBS/ACRE.

9. ANY TREE THAT MUST HAVE BRANCHES REMOVED SHALL BE TRIMMED WITH A SHARP INSTRUMENT/TOOL THAT IS INTENDED FOR SUCH OPERATIONS. GAIN APPROVAL FROM MKEC BEFORE REMOVING BRANCHES FROM ANY TREE. KNOCKING BRANCHES OFF WITH A BACKHOE OR OTHER SIMILAR MACHINES IS NOT ACCEPTABLE! SEE DETAIL ON SHEET 21.

LENGTH OF PROJECT	
WILLIAMSGATE	1,670 FT.
PAVING SUMMARY	
EXCAVATION	1,390 C.Y.
LOOSE FILL (90%)	360 C.Y.
COMP. FILL (95%)	670 C.Y.
MASS GRADING SUMMARY	
EXCAVATION	4,760 C.Y.
LOOSE FILL (90%)	1,020 C.Y.
COMP. FILL (95%)	11,030 C.Y.
PONDS & BERMS SUMMARY	
EXCAVATION	19,050 C.Y.
LOOSE FILL (90%)	10,950 C.Y.



LOCATION MAP

INDEX TO DRAWINGS

SHEET NO.	DESCRIPTION
1	TITLE SHEET
2-5	PAVING DETAILS
6-8	PAVING PLANS
9	CURVE TABLES
10-13	SWS DETAILS
14-15	SWS LINES 1, 2 & 3
16-17	RCB DETAILS
18	RCB 1&2
19	WATER DETAILS
20	WATER LINE PLAN AND PROFILE
21	GRADING DETAILS
22-26	GRADING PLANS
27	SIDEWALK PLAN
28	EROSION CONTROL
29-33	BMP DETAILS
34-47	CROSS SECTIONS
48	FINAL PLAT

BENCHMARKS

BM #1	RR SPIKE IN FACE OF 1ST PP SOUTH OF 21ST ST., 218'± WEST AND 48'± SOUTH OF THE N ¼ COR. SECTION 11-27S-2E ELEV=1357.15
BM #2	"□" ON NE COR. OF STORM INLET ON SOUTH SIDE OF WILLIAMSGATE ELEV=1354.78
BM #3	"T" POST 33'± SOUTH AND 45'± EAST OF NW COR. LOT 1, BLOCK 2, HAWTHORNE 3RD ELEV=1364.24
BM #4	"T" POST 56'± N AND 17'± W. OF CUSP OF CURVE AT SOUTH END OF RESERVE "J" ON CAMDEN CHASE ELEV=1361.18
BM #5	"T" POST 5'± N. ANS 5'± E. OF SW COR. OF RESERVE "K" AT NE CORNER OF WILLIAMSGATE AND MAINSGATE ELEV=1353.39

GREGORY J. ALLISON
LICENSED
11159
KANSAS
PROFESSIONAL ENGINEER

Gregory Allison
10/13/04



HAWTHORNE THIRD ADDITION WILLIAMSGATE/CAMDEN CHASE PHASE		
PROJECT NAME		
TITLE SHEET		
SHEET TITLE		
DRK	MKEC	DRK
DESIGN BY.	DRAWN BY.	CHECKED BY.
OCTOBER 2004	02167	1 / 48
DATE	JOB NO.	SHEET/OF