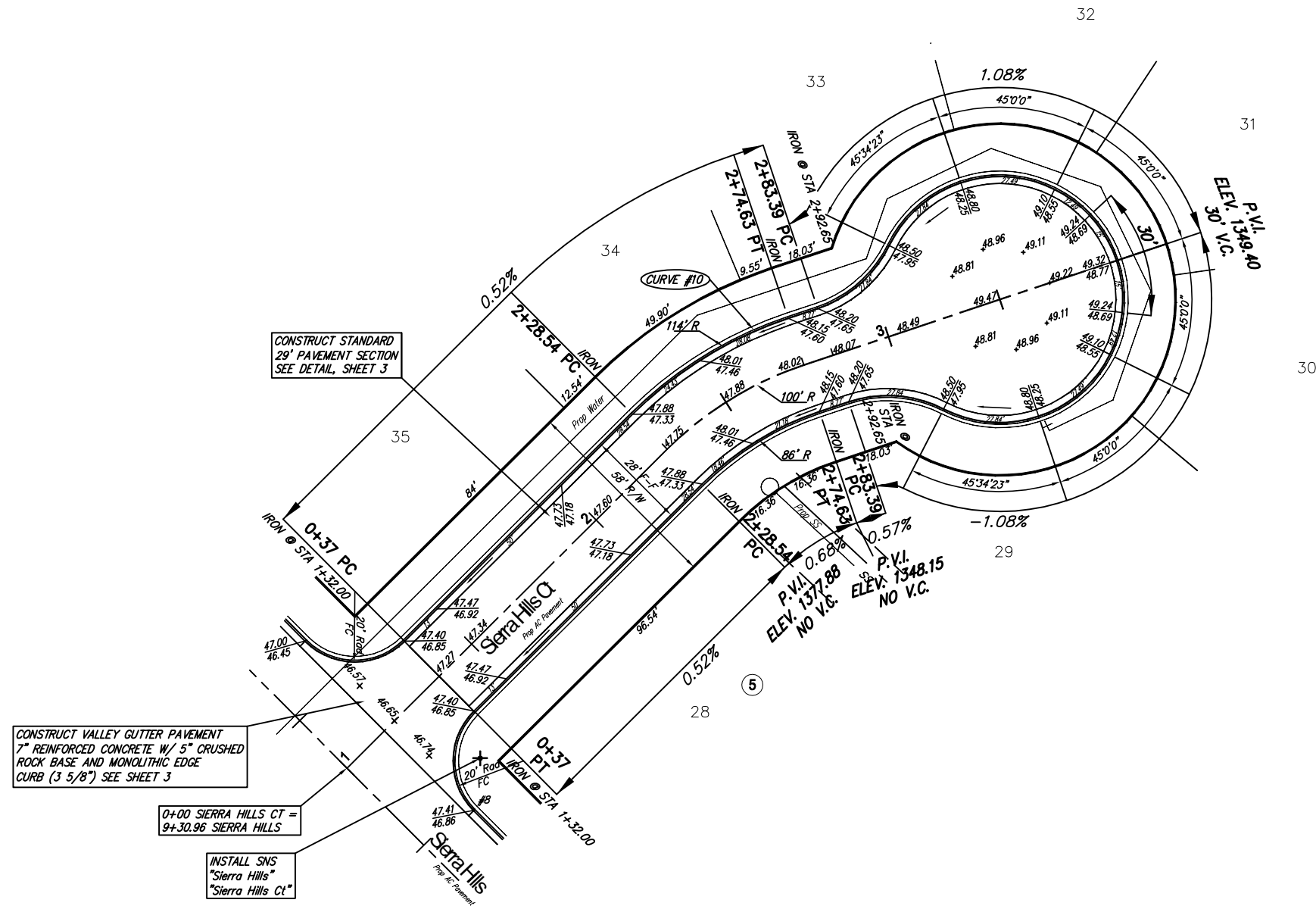


Subdivision Bench Marks

No.	Street and Station	From CL	Description	Elevation
8	Sierra Hills, Sta 8+97	17' Lt	Top of E curb of Sierra Hills at E end of N return Triple Crown Ct	



CONSTRUCT STANDARD  
29' PAVEMENT SECTION  
SEE DETAIL, SHEET 3

CONSTRUCT VALLEY GUTTER PAVEMENT  
7" REINFORCED CONCRETE W/ 5" CRUSHED  
ROCK BASE AND MONOLITHIC EDGE  
CURB (3 5/8") SEE SHEET 3

0+00 SIERRA HILLS CT =  
9+30.96 SIERRA HILLS

INSTALL SNS  
"Sierra Hills"  
"Sierra Hills Ct"

CONSTRUCT COMBINED ROLL  
TYPE CURB AND GUTTER  
(3 5/8") BOTH SIDES



SCALE 1" = 20'  
IRON = •

NOTE: FOR CURVE DATA  
TABLES SEE SHEET 18

SIERRA HILLS STREET IMPROVEMENTS Sierra Hills Ct WICHITA, KANSAS			
	Ruggles & Bohm, P.A. Engineering, Surveying, Land Planning		DESIGN <b>CMB</b>
	924 North Main Wichita, Kansas 67203 www.rbkansas.com		(316) 264-8008 (316) 264-4621 fax E-mail: info@rbkansas.com
DRAWING FILE Paving {Sierra Hills Ct}		PROJECT NUMBER 472--83703	DATE Apr. 22, 2003
			SHEET 13 OF 69